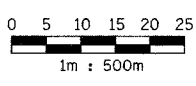
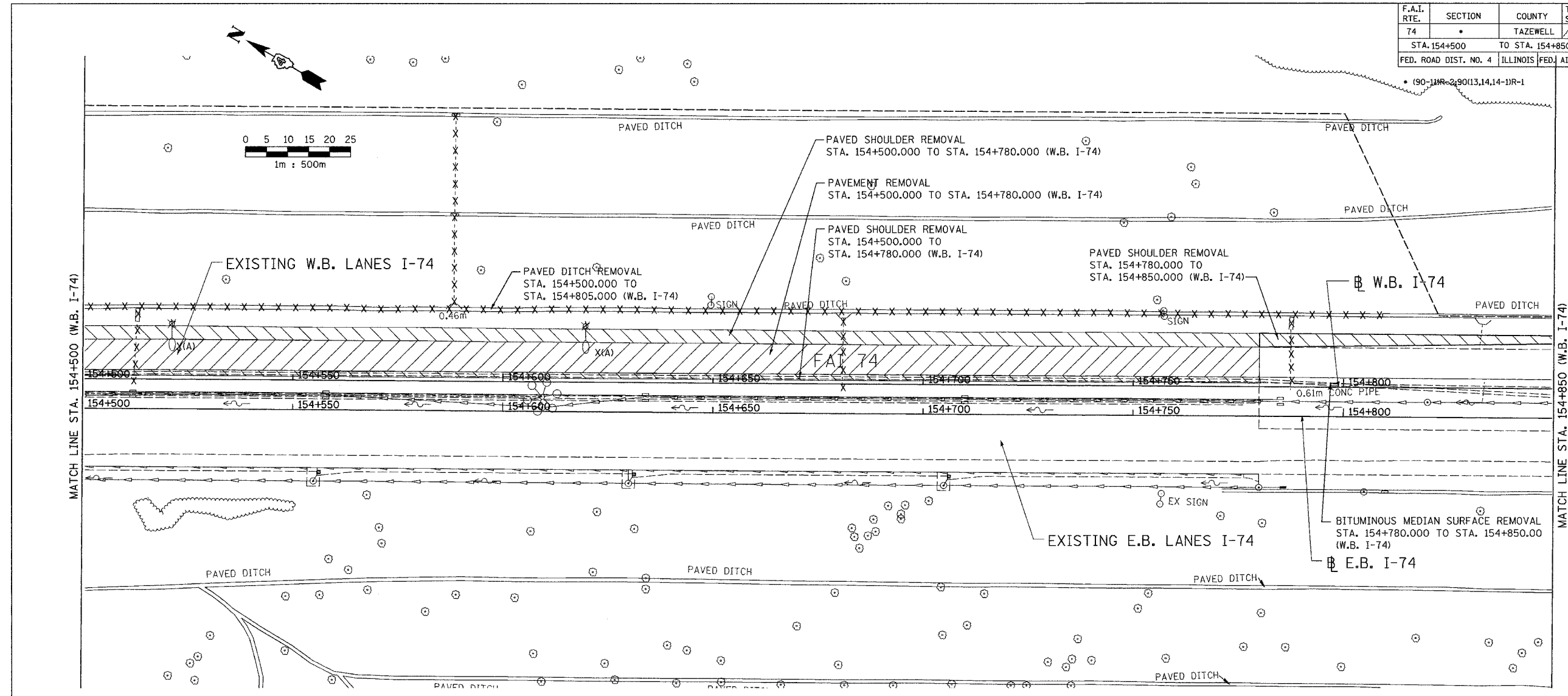


F.A.I. RTE.	SECTION	COUNTY	TOTAL SHEETS	SHEET NO.
74	*	TAZEWELL	1366	984
STA. 154+500		TO STA. 154+850		
FED. ROAD DIST. NO. 4		ILLINOIS		FED. AID PROJECT



EXISTING		LEGEND	
	CATCH BASIN		PAVEMENT REMOVAL
	INLET		SHOULDER REMOVAL
	MANHOLE		GUARDRAIL REMOVAL
	SAG		PAVED DITCH REMOVAL
	SUMMIT		RIGHT-OF-WAY
	DITCH		CONSTRUCTION LIMITS
	SWALE		
	PIPE UNDERDRAIN		
	SANITARY (LOCATION OF RECORD)		
	STORM SEWER		
	COMBINATION SEWER		
	CULVERT		
	CONCRETE HEADWALL		
	FLOW DIRECTION		
	GAS (LOCATION OF RECORD)		
	TELEPHONE (LOCATION OF RECORD)		
	WATER (LOCATION OF RECORD)		
	DITCH		

ALL DIMENSIONS ARE IN METERS (m) EXCEPT AS NOTED

ALL STATIONS INDICATED ARE WESTBOUND STATIONING UNLESS OTHERWISE NOTED.

DA
DAILY & ASSOCIATES,
ENGINEERS, INC.
PEORIA, ILLINOIS

REVISIONS	
NAME	DATE

ILLINOIS DEPARTMENT OF TRANSPORTATION

EXISTING ROADWAY PLAN
F.A.I. ROUTE 74 (I-74)
STA. 154+500 TO STA. 154+850

DATE 01/07/2005

DRAWN BY
CHECKED BY

01/07/2005 02:40:21 PM
qa\adtd\5589-74\dwg\contr\cct\1\p169-6a.dgn

SHEET 5 OF 12
CONTRACT 11: PLAN SET 2 OF 4 FINAL PLANS 01/05