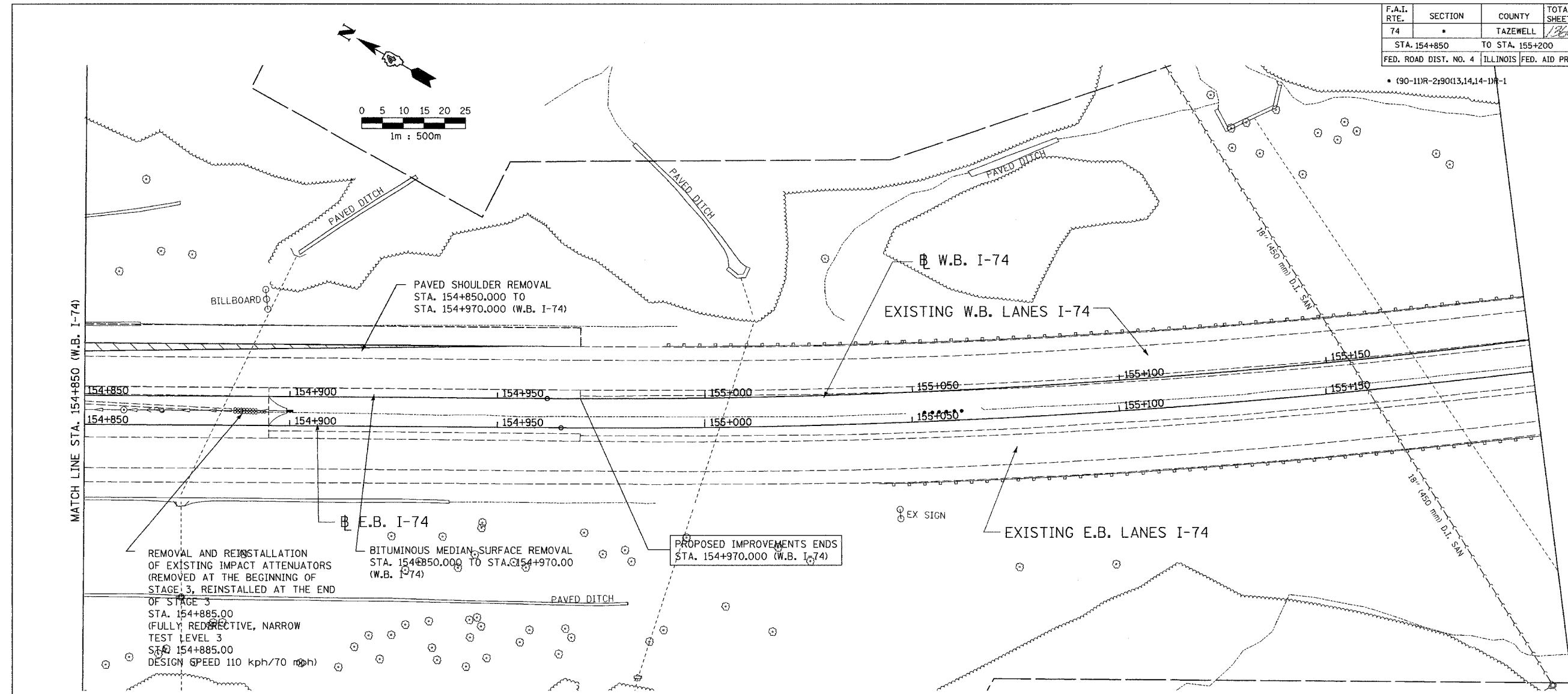


F.A.I. RTE.	SECTION	COUNTY	TOTAL SHEETS	SHEET NO.
74		TAZEWELL	136	986
STA. 154+850		TO STA. 155+200		
FED. ROAD DIST. NO. 4		ILLINOIS		FED. AID PROJECT



LEGEND

	CATCH BASIN		PAVEMENT REMOVAL
	INLET		SHOULDER REMOVAL
	MANHOLE		GUARDRAIL REMOVAL
	SAG		PAVED DITCH REMOVAL
	SUMMIT		RIGHT-OF-WAY
	DITCH		CONSTRUCTION LIMITS
	SWALE		
	PIPE UNDERDRAIN		
	SANITARY (LOCATION OF RECORD)		
	STORM SEWER		
	COMBINATION SEWER		
	CULVERT		
	CONCRETE HEADWALL		
	FLOW DIRECTION		
	GAS (LOCATION OF RECORD)		
	TELEPHONE (LOCATION OF RECORD)		
	WATER (LOCATION OF RECORD)		
	DITCH		

01/07/2005 02:40:23 PM
 Q:\sdr\5589-74\dwg\contract\p171-6a.dwg

ALL DIMENSIONS ARE IN METERS (m) EXCEPT AS NOTED

ALL STATIONS INDICATED ARE WESTBOUND STATIONING UNLESS OTHERWISE NOTED.

DAILY & ASSOCIATES,
ENGINEERS, INC.
PEORIA, ILLINOIS

REVISIONS	
NAME	DATE

ILLINOIS DEPARTMENT OF TRANSPORTATION

EXISTING ROADWAY PLAN
F.A.I. ROUTE 74 (I-74)
STA. 154+850 TO STA. 155+200

DATE 01/07/2005

DRAWN BY _____
CHECKED BY _____