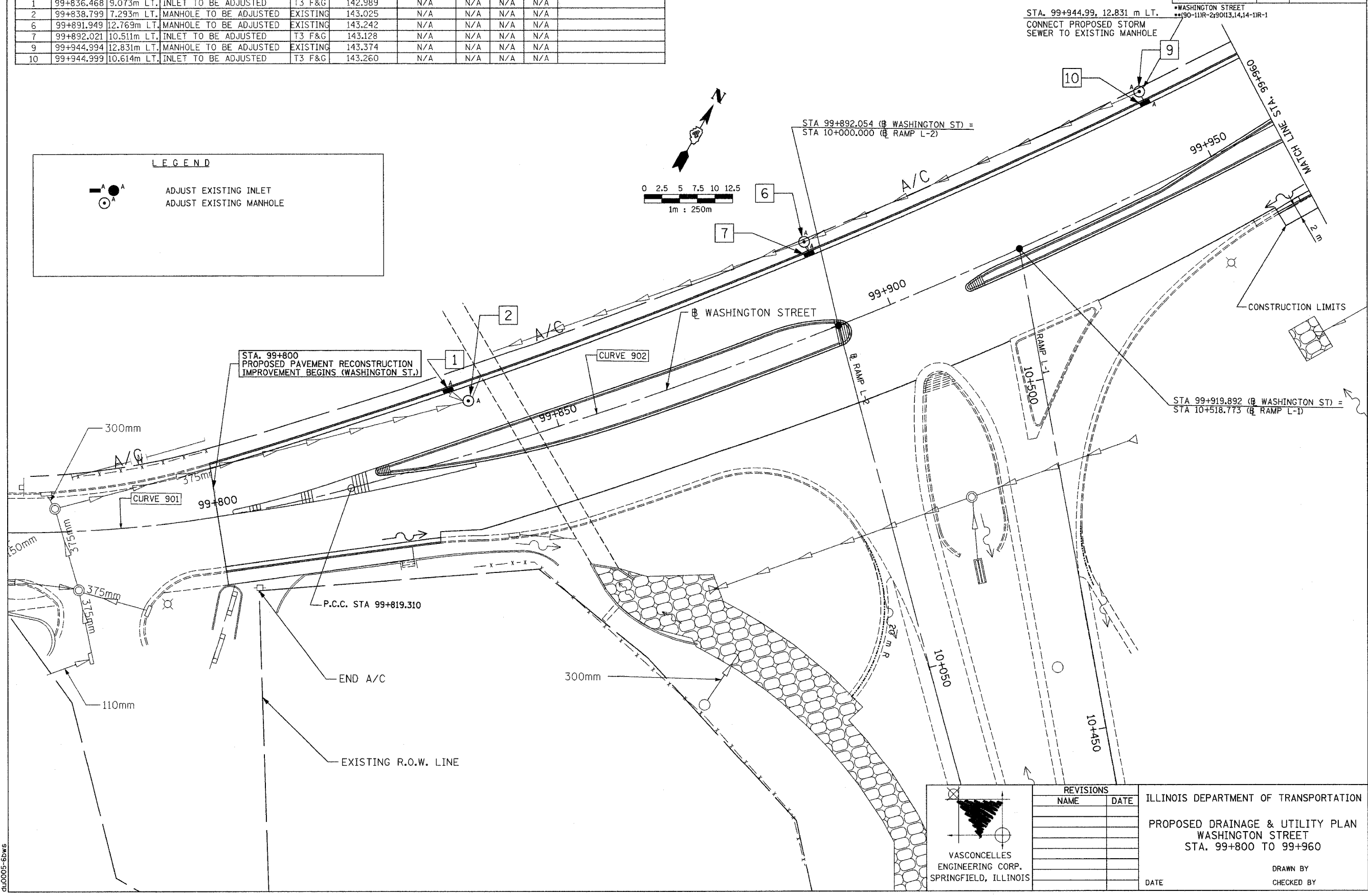
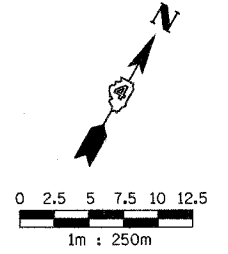


STORM SEWER SCHEDULE									
NUMBER	LOCATION		TYPE	FRAME AND LID/GRATE		INVERT			COMMENTS
	STATION	OFFSET		TYPE	RIM ELEVATION	INSIDE BASE	1	2	
1	99+836.468	9.073m LT.	INLET TO BE ADJUSTED	T3 F&G	142.989	N/A	N/A	N/A	
2	99+838.799	7.293m LT.	MANHOLE TO BE ADJUSTED	EXISTING	143.025	N/A	N/A	N/A	
6	99+891.949	12.769m LT.	MANHOLE TO BE ADJUSTED	EXISTING	143.242	N/A	N/A	N/A	
7	99+892.021	10.511m LT.	INLET TO BE ADJUSTED	T3 F&G	143.128	N/A	N/A <td N/A		
9	99+944.994	12.831m LT.	MANHOLE TO BE ADJUSTED	EXISTING	143.374	N/A	N/A	N/A	
10	99+944.999	10.614m LT.	INLET TO BE ADJUSTED	T3 F&G	143.260	N/A	N/A	N/A	

F.A.L. RTE.	SECTION	COUNTY	TOTAL SHEETS	SHEET NO.
74*	**	TAZEWELL	1366	1017
STA. 99+800		TO STA. 99+960		
FED. ROAD DIST. NO.		ILLINOIS	FED. AID PROJECT	

LEGEND

ADJUST EXISTING INLET
 ADJUST EXISTING MANHOLE



VASCONCELLES
 ENGINEERING CORP.
 SPRINGFIELD, ILLINOIS

REVISIONS	
NAME	DATE

ILLINOIS DEPARTMENT OF TRANSPORTATION

PROPOSED DRAINAGE & UTILITY PLAN
 WASHINGTON STREET
 STA. 99+800 TO 99+960

DATE _____ DRAWN BY _____
 CHECKED BY _____

CONTRACT 11: PLAN SET 2 OF 3 PRE-FINAL 02/02/04 VEC 25 OF 53 JOB NO. 751-001 VASCONCELLES ENGINEERING CORP. DESIGN FIRM REGISTRATION NUMBER 184-002107

du0005-6bvs