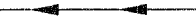
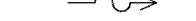







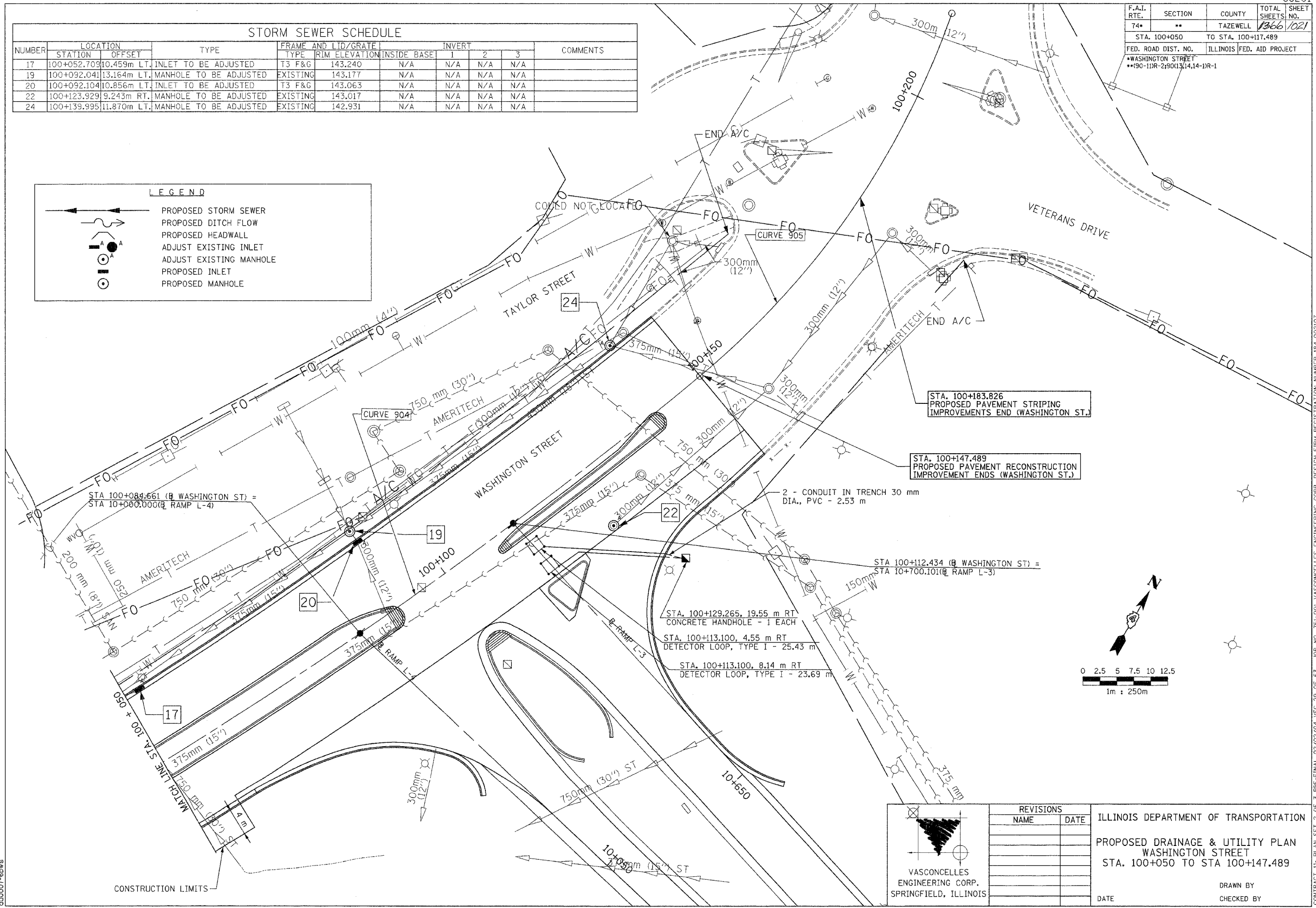
F.A.I. RTE.	SECTION	COUNTY	TOTAL SHEETS	SHEET NO.
74*	**	TAZEWELL	1366	1021
STA. 100+050		TO STA. 100+147.489		
FED. ROAD DIST. NO.		ILLINOIS FED. AID PROJECT		
*WASHINGTON STREET **190-11R-219013,14,14-11R-1				

STORM SEWER SCHEDULE

NUMBER	LOCATION		TYPE	FRAME AND LID/GRATE		INVERT			COMMENTS
	STATION	OFFSET		TYPE	RIM ELEVATION	INSIDE BASE	1	2	
17	100+052.709	10.459m LT.	INLET TO BE ADJUSTED	T3 F&G	143.240	N/A	N/A	N/A	N/A
19	100+092.041	13.164m LT.	MANHOLE TO BE ADJUSTED	EXISTING	143.177	N/A	N/A	N/A	N/A
20	100+092.104	10.856m LT.	INLET TO BE ADJUSTED	T3 F&G	143.063	N/A	N/A	N/A	N/A
22	100+123.929	9.243m RT.	MANHOLE TO BE ADJUSTED	EXISTING	143.017	N/A	N/A	N/A	N/A
24	100+139.995	11.870m LT.	MANHOLE TO BE ADJUSTED	EXISTING	142.931	N/A	N/A	N/A	N/A

LEGEND

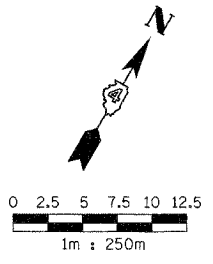
-  PROPOSED STORM SEWER
-  PROPOSED DITCH FLOW
-  PROPOSED HEADWALL
-  ADJUST EXISTING INLET
-  ADJUST EXISTING MANHOLE
-  PROPOSED INLET
-  PROPOSED MANHOLE



STA. 100+183.826
PROPOSED PAVEMENT STRIPING
IMPROVEMENTS END (WASHINGTON ST.)

STA. 100+147.489
PROPOSED PAVEMENT RECONSTRUCTION
IMPROVEMENT ENDS (WASHINGTON ST.)

STA. 100+129.265, 19.55 m RT
CONCRETE HANDHOLE - 1 EACH
STA. 100+113.100, 4.55 m RT
DETECTOR LOOP, TYPE I - 25.43 m
STA. 100+113.100, 8.14 m RT
DETECTOR LOOP, TYPE I - 23.69 m



VASCONCELLES
ENGINEERING CORP.
SPRINGFIELD, ILLINOIS

REVISIONS	
NAME	DATE

ILLINOIS DEPARTMENT OF TRANSPORTATION
PROPOSED DRAINAGE & UTILITY PLAN
WASHINGTON STREET
STA. 100+050 TO STA 100+147.489

DATE _____ DRAWN BY _____
CHECKED BY _____