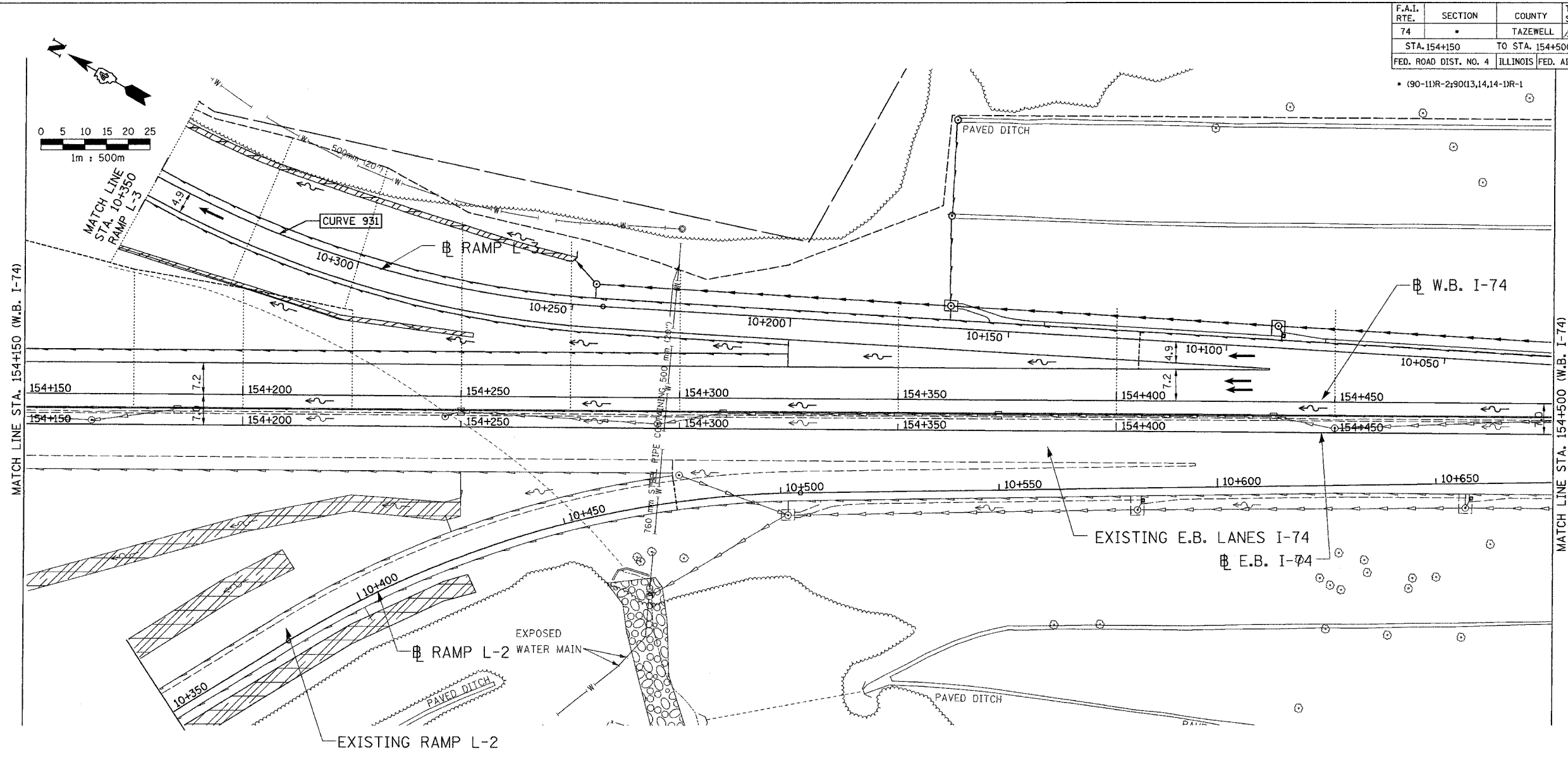


F.A.I. RTE.	SECTION	COUNTY	TOTAL SHEETS	SHEET NO.
74	*	TAZEWELL	1966/025	
STA. 154+150		TO STA. 154+500		
FED. ROAD DIST. NO. 4		ILLINOIS		FED. AID PROJECT



01/07/2005 01:21:53 PM
 G:\dotc\5589-74\dwg\contr\cctf\iml02-6a.dwg

..... SECTION LINE
 - - - - - MATCH LINE
 - - - - - CONSTRUCTION LIMITS

KEY STATIONS GIVEN ONLY.

ALL DIMENSIONS ARE IN METERS (m) EXCEPT AS NOTED

DA
 DAILY & ASSOCIATES,
 ENGINEERS, INC.
 PEORIA, ILLINOIS

REVISIONS	
NAME	DATE

SHEET 2 OF 2

ALL STATIONS INDICATED ARE WESTBOUND STATIONING UNLESS OTHERWISE NOTED.

ILLINOIS DEPARTMENT OF TRANSPORTATION

INTERCHANGE MATCH LINE DETAIL
 F.A.I. ROUTE 74 (I-74)
 RAMP L-3
 STA. 10+025 TO STA. 10+350

DATE 01/07/2005

DRAWN BY _____
 CHECKED BY _____

CONTRACT 11: PLAN SET 2 OF 4 FINAL PLANS 01/05