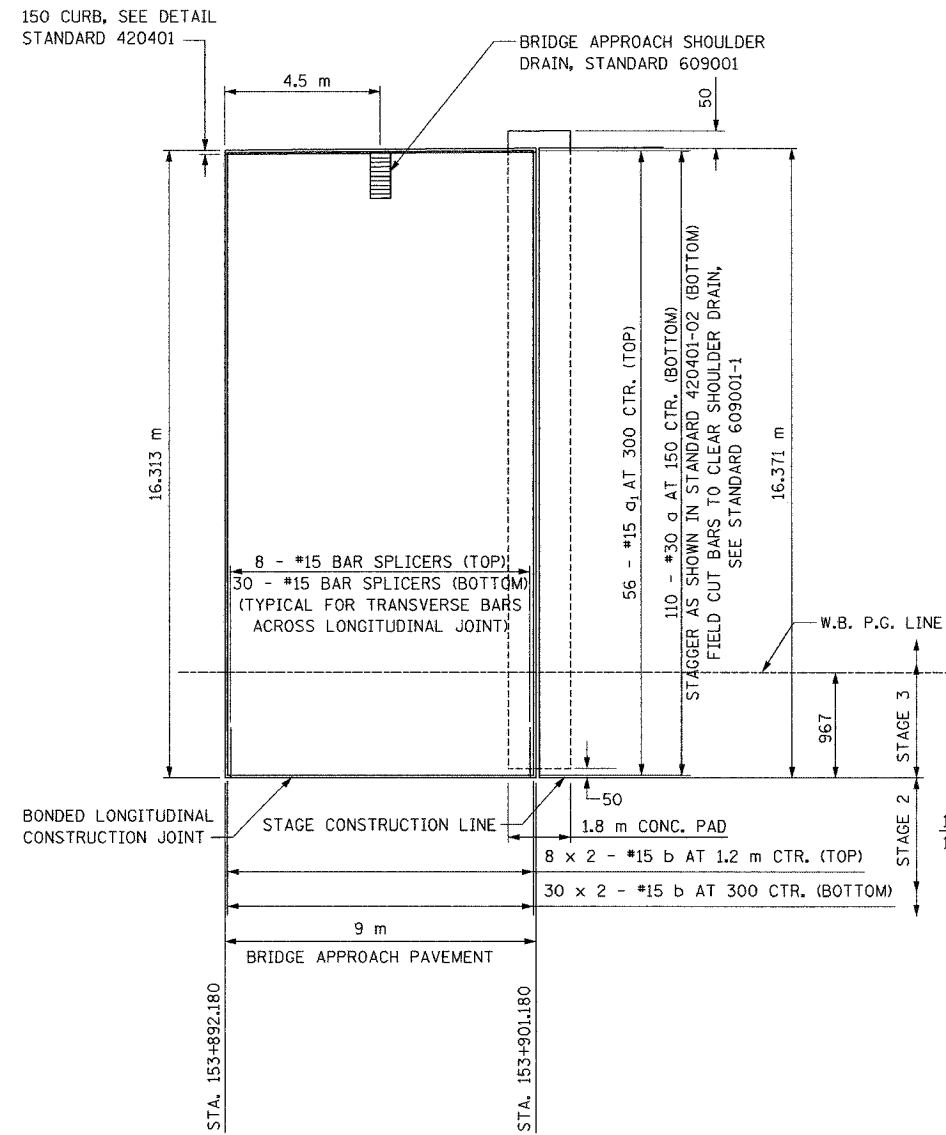


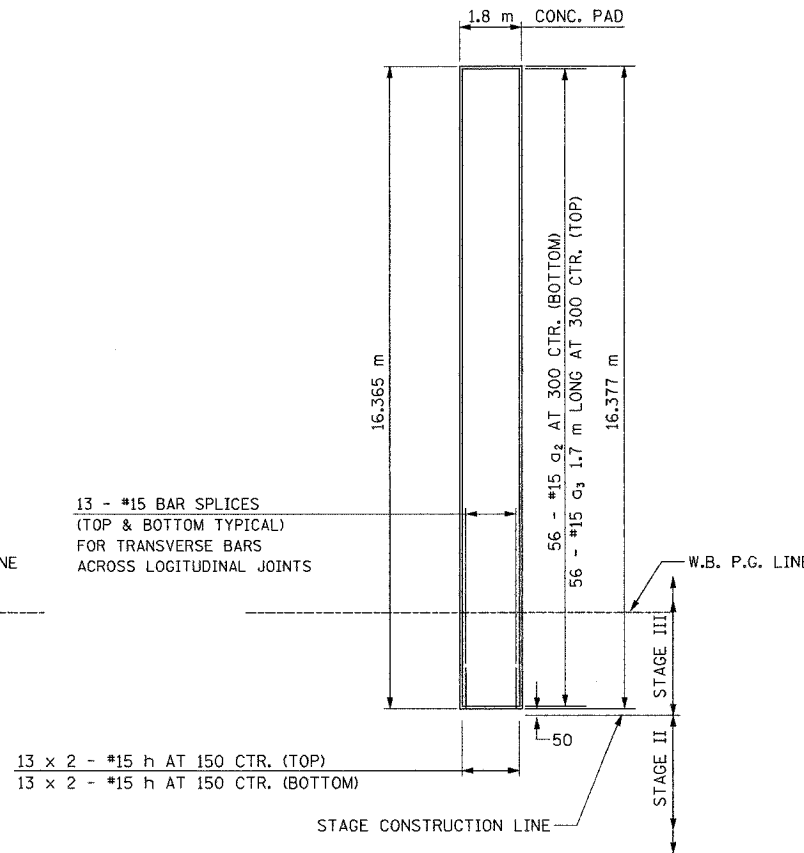
STATE OF ILLINOIS  
DEPARTMENT OF TRANSPORTATION

F.A.I. RTE.	SECTION	COUNTY	TOTAL SHEETS	SHEET NO.
74	•	TAZEWELL	1366	1043
STA.	TO STA.			
FED. ROAD DIST. NO. 4	ILLINOIS		FED. AID PROJECT	

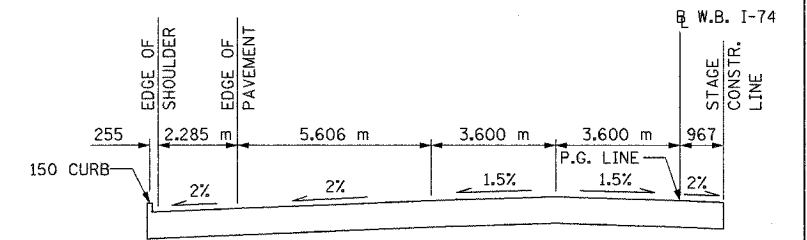
• (90-11)R-2:90(13,14,14-1)R-1



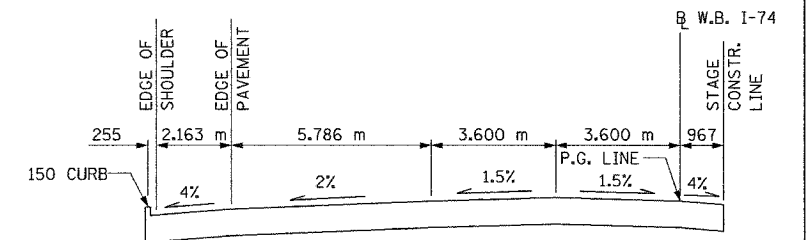
BRIDGE APPROACH PAVEMENT (SPECIAL) DETAIL  
(MODIFIED FOR STAGE CONSTRUCTION)



CONCRETE SLEEPER PAD DETAIL  
(MODIFIED FOR STAGE CONSTRUCTION)



BRIDGE APPROACH PAVEMENT SLOPES AT STA. 153+892.180



BRIDGE APPROACH PAVEMENT SLOPES AT STA. 153+901.180

BILL OF MATERIAL

BARS REQUIRED FOR BRIDGE APPROACH PAVEMENT SPECIAL AND CONCRETE SLEEPER PAD

Bar	No.	Size	Length (m)	Shape
a	110	#30	**	U
a <sub>1</sub>	56	#15	8.85 m	U
a <sub>2</sub>	56	#15	**	U
a <sub>3</sub>	56	#15	1.70 m	U
b	60	#15	8.51 m	—
b <sub>1</sub>	16	#15	8.51 m	—
h	52	#15	8.51 m	—
* #15 Bar Splacers Each				64

\*\*SEE STANDARD 420401 FOR DIMENSIONS OF a & a<sub>2</sub> BARS.

SEE SUMMARY OF QUANTITIES FOR DOWEL BAR QUANTITIES.

BARS INDICATED THUS 8 x 2 - #15 ETC. INDICATES 8 LINES OF BARS WITH 2 LENGTHS PER LINE

#15 BAR SPLICE LENGTH - 740 mm MIN.  
• FIELD VERIFY REQUIRED MATE

\*THESE BRIDGE APPROACH PAVEMENT DETAILS ARE TO BE USED IN CONJUNCTION WITH STANDARD 420401 AND PROJECT STANDARD 420401-I74. THE COST FOR ALL EQUIPMENT, LABOR AND MATERIALS TO CONSTRUCT THE BRIDGE APPROACH PAVEMENT AND CONCRETE SLEEPER PAD, AS DETAILED IN THE PLANS AND STANDARD 420401, AND PROJECT STANDARD 420401-I74 AS DIRECTED BY THE ENGINEER, SHALL BE INCLUDED IN THE COST FOR "BRIDGE APPROACH PAVEMENT SPECIAL".

NOTE: ALL DIMENSIONS ARE IN mm UNLESS OTHERWISE NOTED.

REVISIONS	NAME		DATE
	NO.	DESCRIPTION	

**DA**  
DAILY & ASSOCIATES,  
ENGINEERS, INC.  
PEORIA, ILLINOIS

SHEET 1 OF 1  
ALL STATIONS INDICATED ARE WESTBOUND STATIONING UNLESS OTHERWISE NOTED.

ILLINOIS DEPARTMENT OF TRANSPORTATION  
BRIDGE APPROACH PAVEMENT  
(SPECIAL) DETAIL  
I-74 BRIDGE OVER WASHINGTON STREET  
S.N. 090-0163 (WB)  
NOT TO SCALE  
DATE 01/07/2005  
DRAWN BY  
CHECKED BY

01/07/2005 03:39:31 PM  
Q:\s04ra\5589-74\dwg\contract\h\ball01-6a.dgn

DESIGNED	SBM
CHECKED	SBM
DRAWN	DEH
CHECKED	JFS

CONTRACT 11: PLAN SET 2 OF 4 FINAL PLANS 01/05