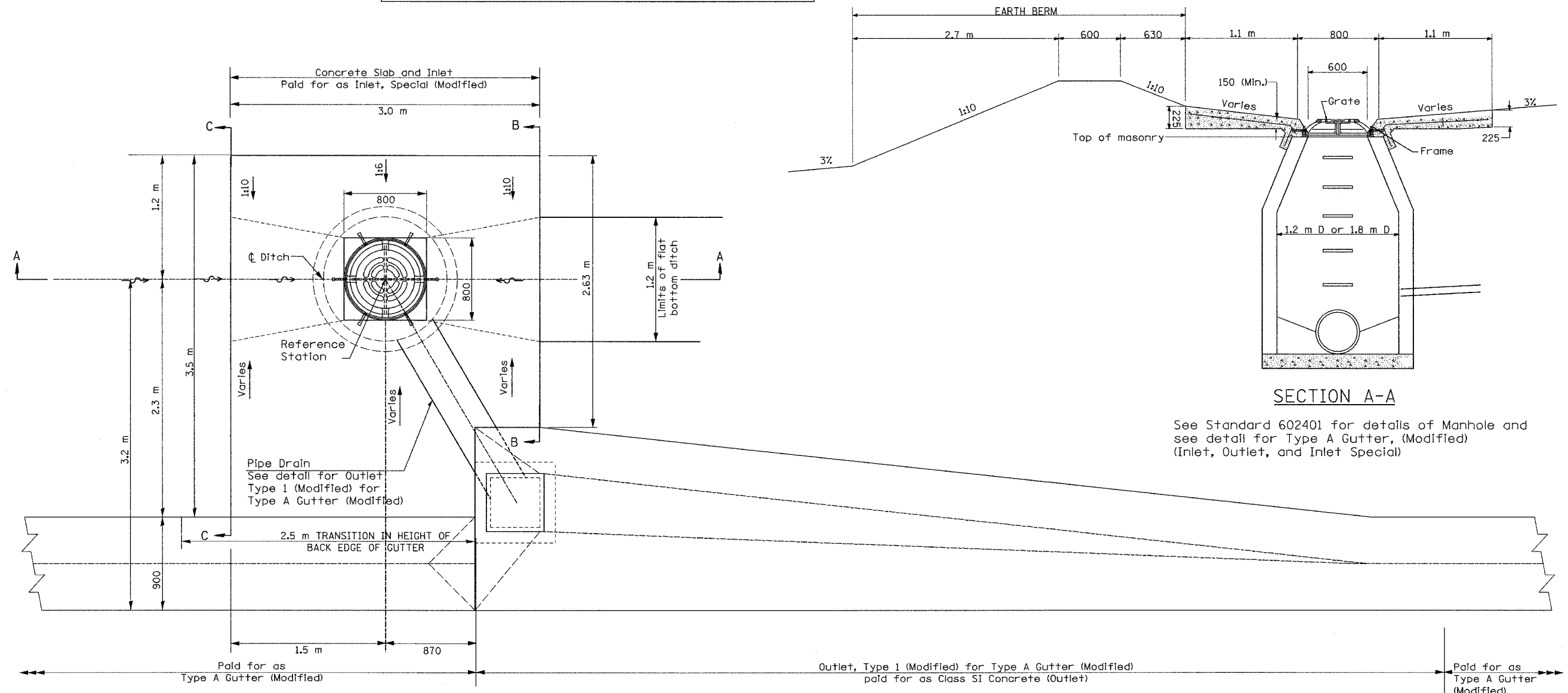


F.A.I. RTE.	SECTION	COUNTY	TOTAL SHEETS	SHEET NO.
74	*	TAZEWELL	1366	057
STA.	TO STA.			
FED. ROAD DIST. NO. 4	ILLINOIS		FED. AID PROJECT	

QUANTITY
 Section B-B to C-C= 2.117 m³ (2.769 cu. yd.) concrete.
 Concrete included in the cost of Inlet, Special (Modified)

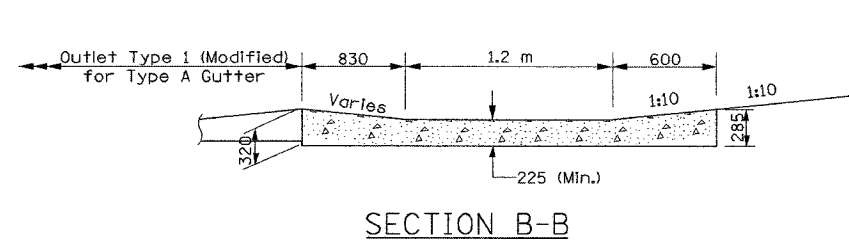


SECTION A-A

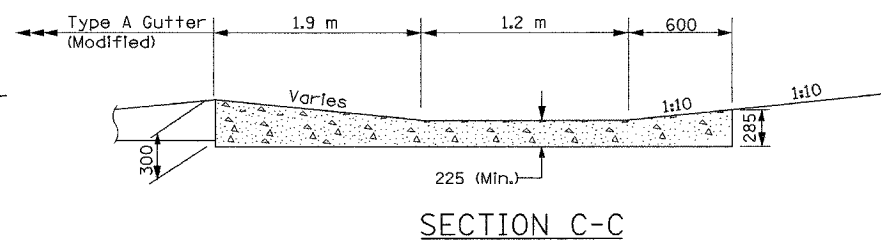
See Standard 602401 for details of Manhole and see detail for Type A Gutter, (Modified) (Inlet, Outlet, and Inlet Special)

INLETS, SPECIAL PLAN

Identified on drainage plan sheets as Inlets, Special (Modified) paid for as Inlets, Special



SECTION B-B



SECTION C-C

All dimensions are in millimeters (mm) unless otherwise noted.

D&A
 DAILY & ASSOCIATES,
 ENGINEERS, INC.
 PEORIA, ILLINOIS

REVISIONS	
NAME	DATE

SHEET 8 OF 12

ALL STATIONS INDICATED ARE WESTBOUND STATIONING UNLESS OTHERWISE NOTED.

ILLINOIS DEPARTMENT OF TRANSPORTATION

**DRAINAGE DETAIL
 INLETS, SPECIAL (MODIFIED)**

DATE 01/07/2005

DRAWN BY _____
 CHECKED BY _____

01/07/2005 01:21:12 PM
 q:\data\5589-74\dwg\contract\ill\dd106-6a.dwg

CONTRACT 11: PLAN SET 2 OF 4 FINAL PLANS 01/05