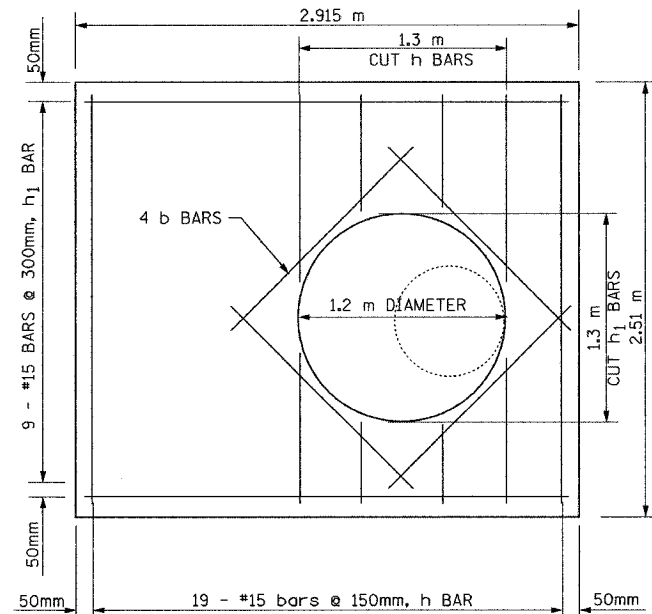


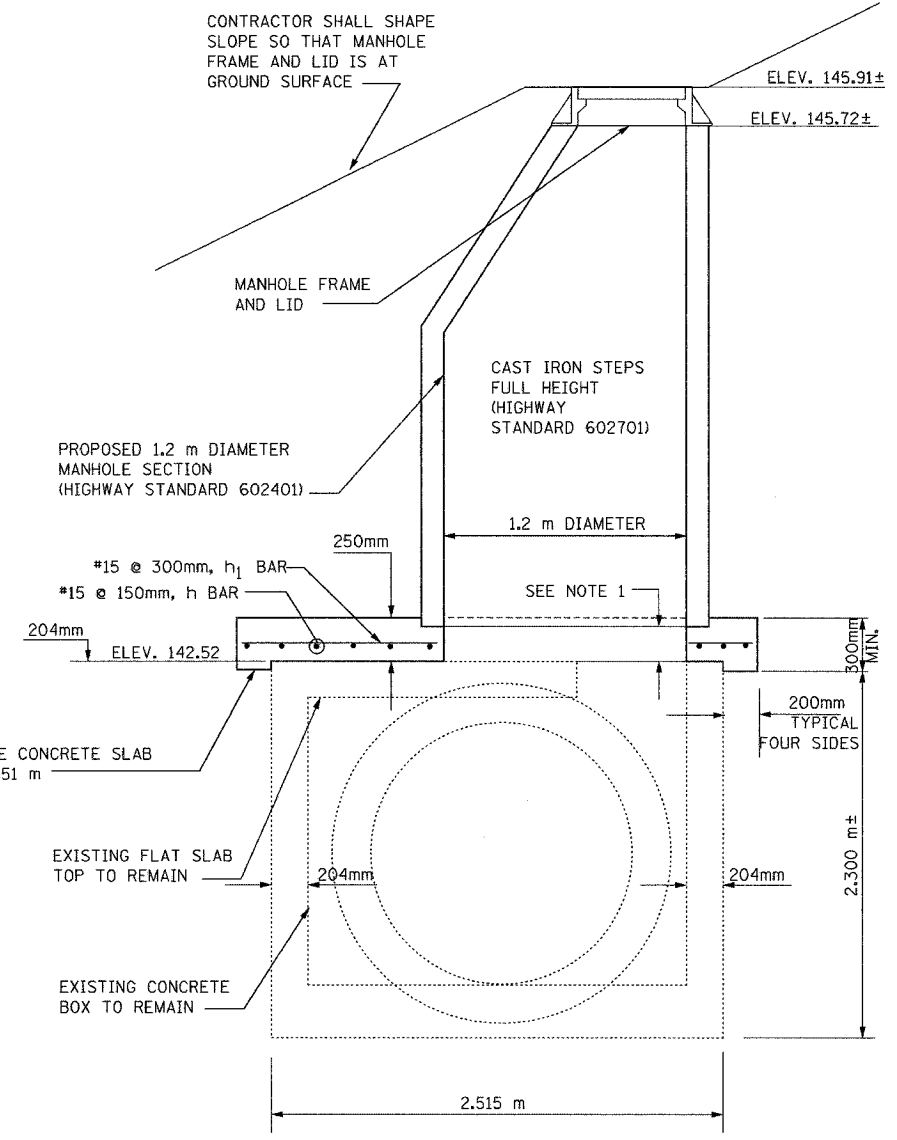
SITE PLAN



PLAN VIEW
TOP CONCRETE SLAB

BILL OF MATERIAL				
BAR	NO	SIZE	LENGTH	SHAPE
h	19	15	2.410 m	—
h ₁	9	15	2.815 m	—
b	4	15	2.00 m	—
CLASS MS CONCRETE			CU.M	1.65
REINFORCEMENT BARS			kg	125

CLASS MS CONCRETE AND THE REINFORCEMENT BARS ARE INCLUDED IN THE UNIT COST FOR MANHOLES, SPECIAL, 1.2 m DIAMETER



SECTION A-A
MANHOLES, SPECIAL, 1.2 m DIAMETER
STA. 153+933.720, 38.657 m LT. (W.B. I-74)

NOTE 1:
PRECAST MANHOLE MUST BE BLOCKED UP 200mm ABOVE EXISTING SLAB, THEN THE PROPOSED CONCRETE SLAB SHALL BE CAST-IN-PLACE. ONLY ONE PRECAST MANHOLE SECTION SHALL BE INSTALLED UNTIL AFTER THE CONCRETE SLAB HAS REACHED FULL STRENGTH.

F.A.I. RTE.	SECTION	COUNTY	TOTAL SHEETS NO.	SHEET NO.
74	*	TAZEWELL	1366	1053
STA. TO STA.		FED. ROAD DIST. NO. 4 ILLINOIS FED. AID PROJECT		

• (90-111R-2;9013,14,14-11R-1

01/07/2005 01:21:15 PM
d:\data\5589-74\dwg\contract\1\dd108-56.dwg



REVISIONS	
NAME	DATE

ILLINOIS DEPARTMENT OF TRANSPORTATION
DRAINAGE DETAIL
MANHOLES, SPECIAL, 1.2 m DIAMETER
STA. 153+933.720 (W.B. I-74),
CLOSED LID
DRAWN BY
CHECKED BY
DATE 01/07/2005

SHEET 10 OF 12

CONTRACT 11: PLAN SET 2 OF 4 FINAL PLANS 01/05