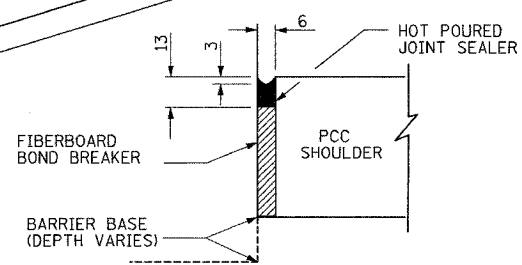
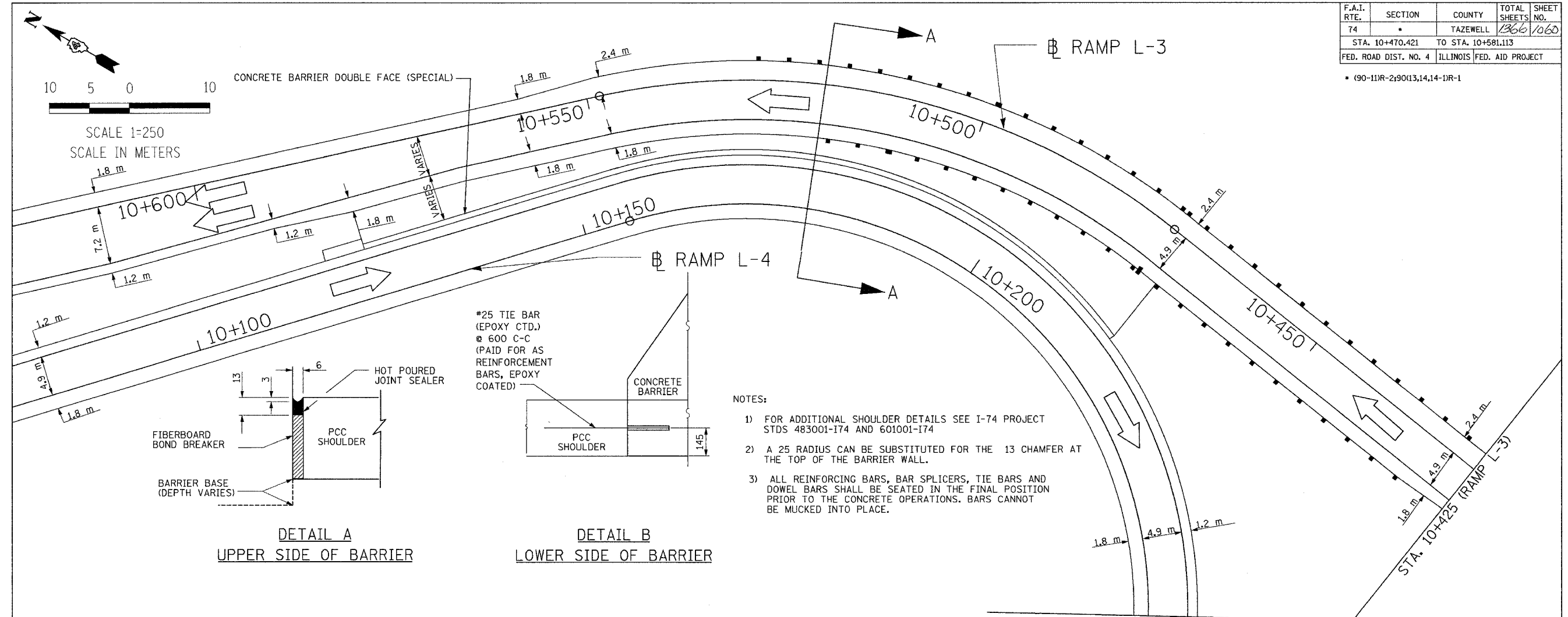
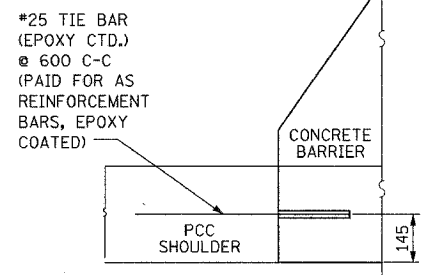


F.A.I. RTE.	SECTION	COUNTY	TOTAL SHEETS	SHEET NO.
74		TAZEWELL	1366	1060
STA. 10+470.421		TO STA. 10+581.113		
FED. ROAD DIST. NO. 4		ILLINOIS FED. AID PROJECT		

• (90-11)R-2;90(13,14,14-1)R-1



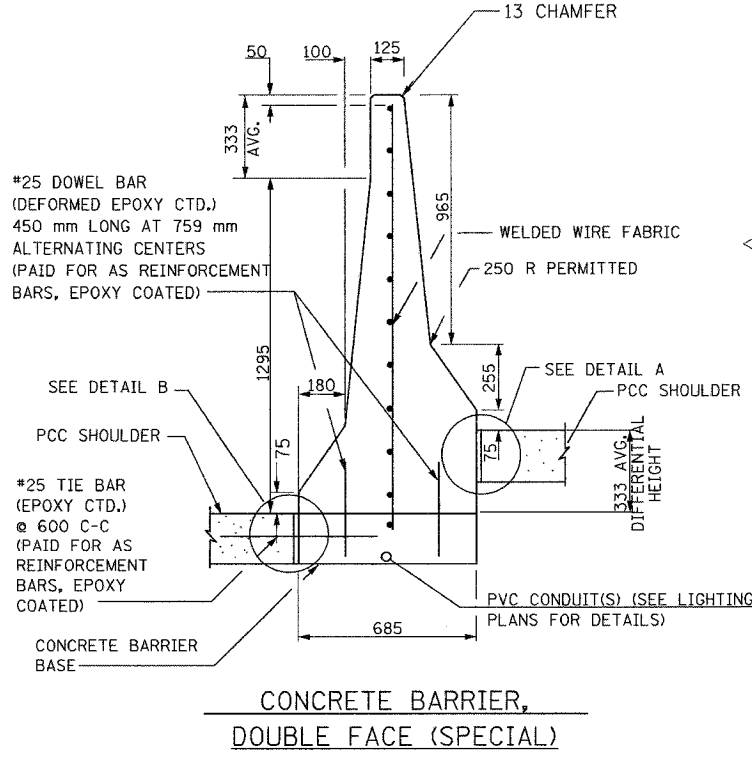
DETAIL A
UPPER SIDE OF BARRIER



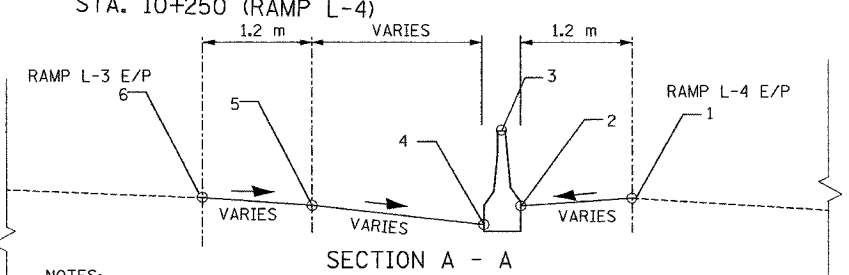
DETAIL B
LOWER SIDE OF BARRIER

- NOTES:
- 1) FOR ADDITIONAL SHOULDER DETAILS SEE I-74 PROJECT STDS 483001-I74 AND 601001-I74
 - 2) A 25 RADIUS CAN BE SUBSTITUTED FOR THE 13 CHAMFER AT THE TOP OF THE BARRIER WALL.
 - 3) ALL REINFORCING BARS, BAR SPLICERS, TIE BARS AND DOWEL BARS SHALL BE SEATED IN THE FINAL POSITION PRIOR TO THE CONCRETE OPERATIONS. BARS CANNOT BE MUCKED INTO PLACE.

RAMP L-3 STATION	ELEVATIONS						RAMP L-4 STATION
	6	5	4	3	2	1	
10+470.217	149.043	148.971	147.973	149.518	148.223	148.223	10+217.189
10+475.000	148.815	148.733	147.817	149.381	148.086	148.086	10+213.362
10+480.000	148.575	148.479	147.668	149.246	147.951	147.951	10+209.571
10+485.000	148.336	148.226	147.519	149.109	147.814	147.814	10+205.748
10+490.000	148.097	147.973	147.363	148.971	147.676	147.676	10+201.897
10+495.000	147.859	147.720	147.213	148.833	147.538	147.538	10+198.020
10+500.000	147.643	147.499	147.059	148.693	147.398	147.398	10+194.121
10+505.000	147.443	147.299	146.904	148.553	147.258	147.258	10+190.203
10+510.000	147.242	147.098	146.750	148.413	147.118	147.118	10+186.269
10+515.000	147.042	146.898	146.593	148.272	146.977	146.977	10+182.321
10+520.000	146.842	146.698	146.439	148.130	146.835	146.835	10+178.364
10+525.000	146.649	146.507	146.283	147.988	146.693	146.693	10+174.400
10+530.000	146.480	146.351	146.126	147.842	146.547	146.548	10+170.432
10+535.000	146.313	146.196	145.969	147.665	146.370	146.378	10+166.464
10+540.000	146.146	146.040	145.813	147.488	146.193	146.208	10+162.199
10+545.000	145.979	145.885	145.656	147.312	146.017	146.039	10+158.539
10+550.000	145.811	145.730	145.496	147.122	145.827	145.856	10+154.265
10+555.000	145.643	145.571	145.322	146.898	145.603	145.641	10+149.251
10+560.000	145.476	145.404	145.148	146.674	145.379	145.426	10+144.237
10+565.000	145.309	145.237	144.973	146.458	145.163	145.211	10+139.223
10+567.250	145.234	145.162	144.895	146.381	145.086	145.134	10+136.967
10+570.000	145.144	145.072	144.799	146.244	144.949	144.997	10+134.209
10+575.000	144.964	144.892	144.624	146.029	144.734	144.782	10+129.195
10+580.000	144.783	144.711	144.450	145.828	144.533	144.581	10+124.181
10+581.113	144.744	144.672	144.413	145.789	144.494	144.542	10+123.117



CONCRETE BARRIER,
DOUBLE FACE (SPECIAL)



- NOTES:
1. BARRIER BASE WIDTH EQUALS 0.685 m. BARRIER HEIGHT EQUALS 1.295 m ON HIGH SIDE OF SHOULDER. ON LOW SIDE OF SHOULDER, HEIGHT EQUALS DIFFERENCE BETWEEN SHOULDER ELEVATION AND TOP OF BARRIER ELEVATION, INCLUDING DIFFERENTIAL.
 2. SEE CONCRETE BARRIER DETAILS FOR FURTHER DETAIL REGARDING LOW SIDE ELEVATION DIFFERENTIAL. SEE MISCELLANEOUS DETAILS SUPERELEVATION TABLES FOR RAMP L-3 AND RAMP L-4 PAVEMENT GRADES AND ELEVATIONS. SEE MISCELLANEOUS DETAILS CONCRETE BARRIER DETAILS RAMP L-3/L-4 FOR CONCRETE BARRIER AND ADJACENT SHOULDER INFORMATION.

ALL DIMENSIONS ARE IN MILLIMETERS (mm) EXCEPT AS NOTED

D&A
DAILY & ASSOCIATES,
ENGINEERS, INC.
PEORIA, ILLINOIS

REVISIONS	
NAME	DATE

ILLINOIS DEPARTMENT OF TRANSPORTATION
MISCELLANEOUS DETAIL
CONCRETE BARRIER DETAILS
RAMP L-3/L-4
STA. 10+470.421 TO STA. 10+581.113
DRAWN BY
DATE 01/07/2005
CHECKED BY

01/07/2005 01:21:19 PM
C:\projects\5589-74\dwg\concrete\misc\05-60.dwg

CONTRACT 11: PLAN SET 2 OF 4 FINAL PLANS 01/05