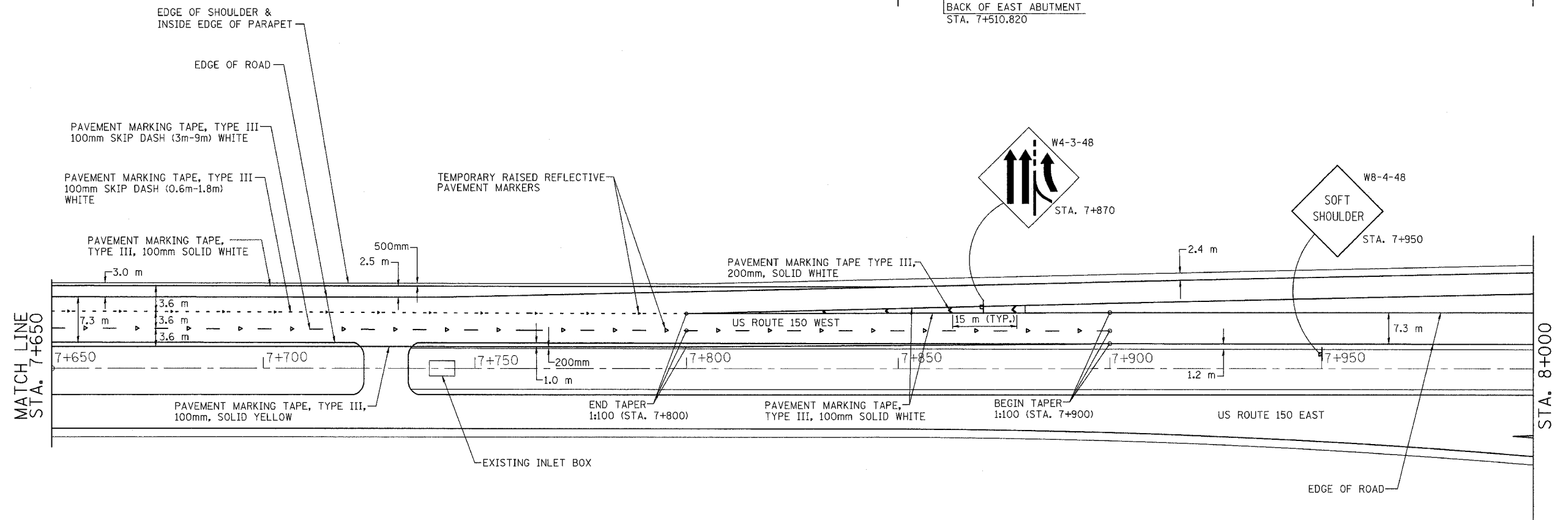
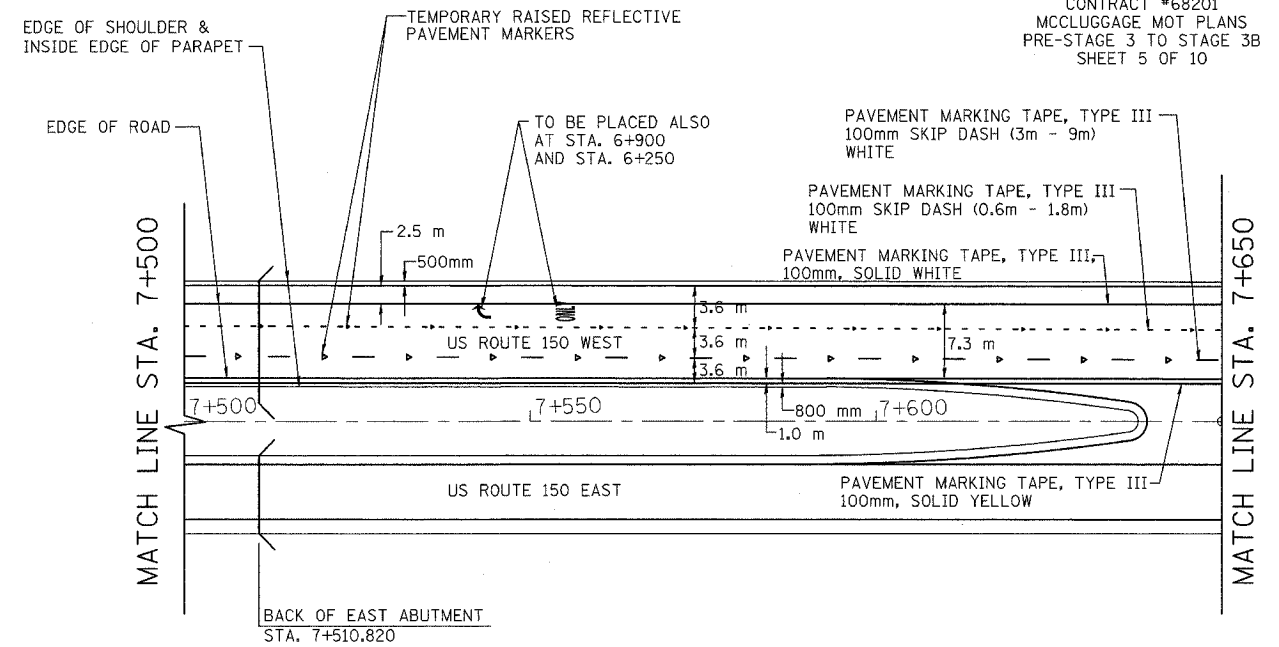


F.A. RTE.	SECTION	COUNTY	TOTAL SHEETS	SHEET NO.
		PEORIA/TAZEWELL	1366	1205
STA. 7+500		TO STA. 8+000		
FED. ROAD DIST. NO. 8		ILLINOIS FED. AID PROJECT		

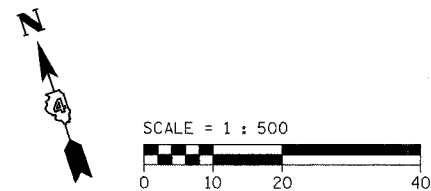
CONTRACT #68201
 MCCLUGGAGE MOT PLANS
 PRE-STAGE 3 TO STAGE 3B
 SHEET 5 OF 10

SHEET NO: 5 OF 10
 APPLICABLE TO: CONTRACT #68201 - PRE-STAGE 3 TO STAGE 3B
 PURPOSE OF SHEET: THIS SHEET DEPICTS THE TEMPORARY SIGNING AND STRIPING WHICH WAS PLACED DURING CONTRACT #68195. THIS TEMPORARY CONFIGURATION SHALL REMAIN FROM PRE-STAGE 3 TO STAGE 3B OF CONTRACT #68201.

NOTE:
 THE EXISTING TEMPORARY SIGNING AND STRIPING FOR THE THREE-LANE CONFIGURATION SHALL BE MAINTAINED BY CONTRACT #68201 FROM PRE-STAGE 3 TO STAGE 3B, AND SHALL BE INCLUDED WITHIN THE LUMP SUM PAY ITEM FOR TRAFFIC CONTROL AND PROTECTION (SPECIAL).



LI LIN ENGINEERING, LTD. CONSULTING ENGINEERS
 210 WEST CHESTNUT, CHATHAM, IL 62629
 PHONE: (217)-483-4168 FAX: (217)-483-4706



REVISIONS		ILLINOIS DEPARTMENT OF TRANSPORTATION TRAFFIC CONTROL PLAN STRIPING DETAILS US 150 MCCLUGGAGE BRIDGE PEORIA & TAZEWELL COUNTIES PRE-STAGE 3 TO STAGE 3B SCALE = 1:500 DATE: 11/04
NAME	DATE	
		DRAWN BY: FML CHECKED BY: IYL