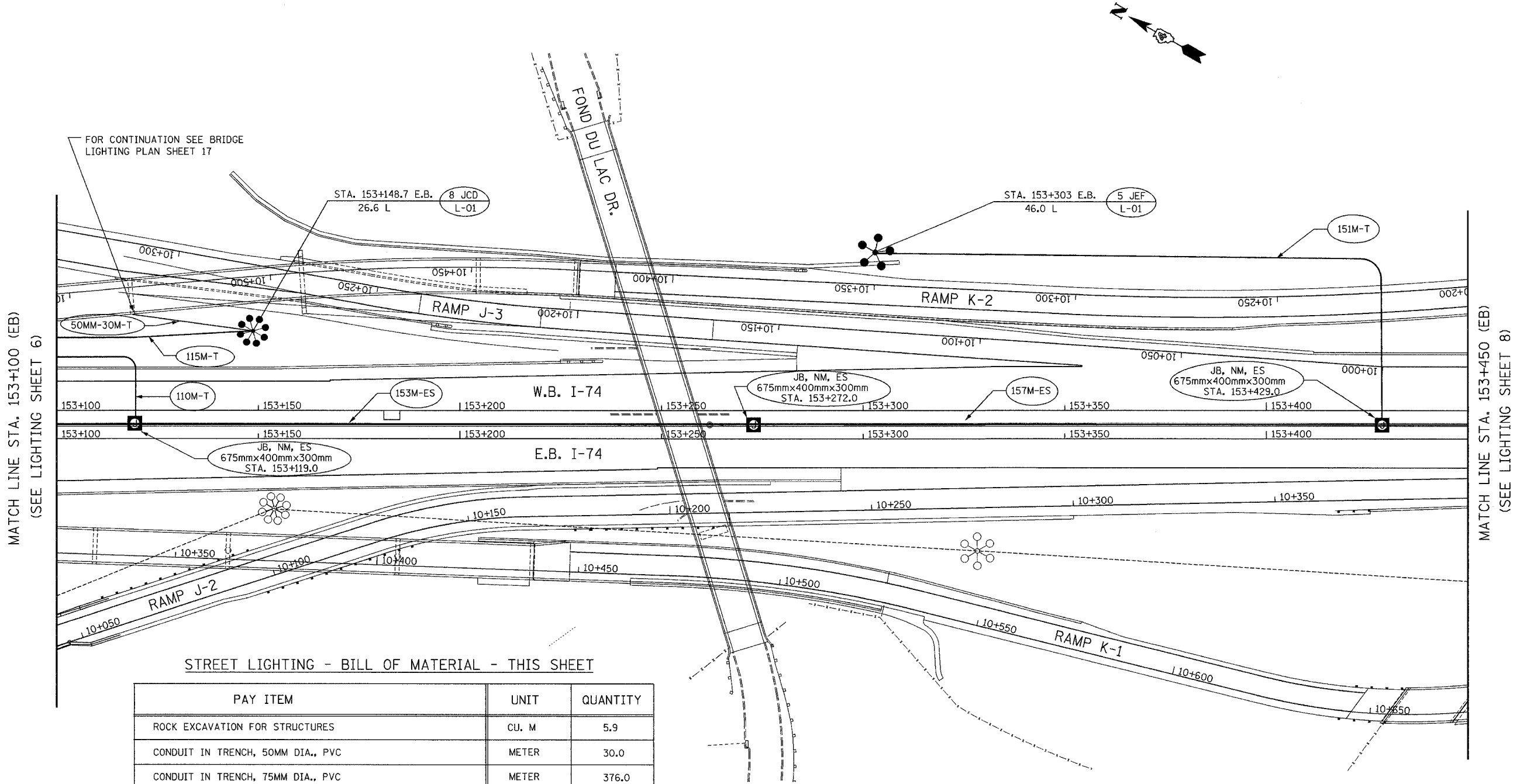


F.A.I. RTE.	SECTION	COUNTY	TOTAL SHEETS	SHEET NO.
74		TAZEWELL	1366	1217
STA. 153+100		TO STA. 153+450		
FED. ROAD DIST. NO.	ILLINOIS	FED. AID PROJECT		
* (90-1)R-2, 90(13, 14, 14-1)R-1				
CONTRACT NO. 68201				



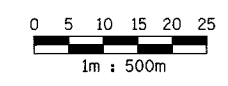
MATCH LINE STA. 153+100 (EB)
(SEE LIGHTING SHEET 6)

MATCH LINE STA. 153+450 (EB)
(SEE LIGHTING SHEET 8)

12/20/2004 12:44:12 PM m:\proj\1557\5\lighting\74\contract\11103-74r4.dwg

STREET LIGHTING - BILL OF MATERIAL - THIS SHEET

PAY ITEM	UNIT	QUANTITY
ROCK EXCAVATION FOR STRUCTURES	CU. M	5.9
CONDUIT IN TRENCH, 50MM DIA., PVC	METER	30.0
CONDUIT IN TRENCH, 75MM DIA., PVC	METER	376.0
CONDUIT EMBEDDED IN STRUCTURE, 75mm DIA. PVC	METER	310.0
JUNCTION BOX, NON-METALLIC, EMBEDDED IN STRUCTURE 675MM X 400MM X 300MM	EACH	3
TRENCH AND BACKFILL FOR ELECTRICAL WORK	METER	406.0
HIGH MAST LUMINAIRE, (INSTALL ONLY)	EACH	13
LIGHT TOWER, INSTALL ONLY	EACH	2
LIGHT TOWER FOUNDATION	METER	11.8



ab **alfred benesch & company**
CONSULTING ENGINEERS
205 NORTH MICHIGAN AVENUE, CHICAGO, ILLINOIS 60601

REVISIONS	
NAME	DATE

LIGHTING SHEET 7 OF 41

ILLINOIS DEPARTMENT OF TRANSPORTATION

PROPOSED LIGHTING PLAN
W.B. I-74
STA. 153+100 TO STA. 153+450

DATE: 12/20/04

DRAWN BY DJK
CHECKED BY MKR