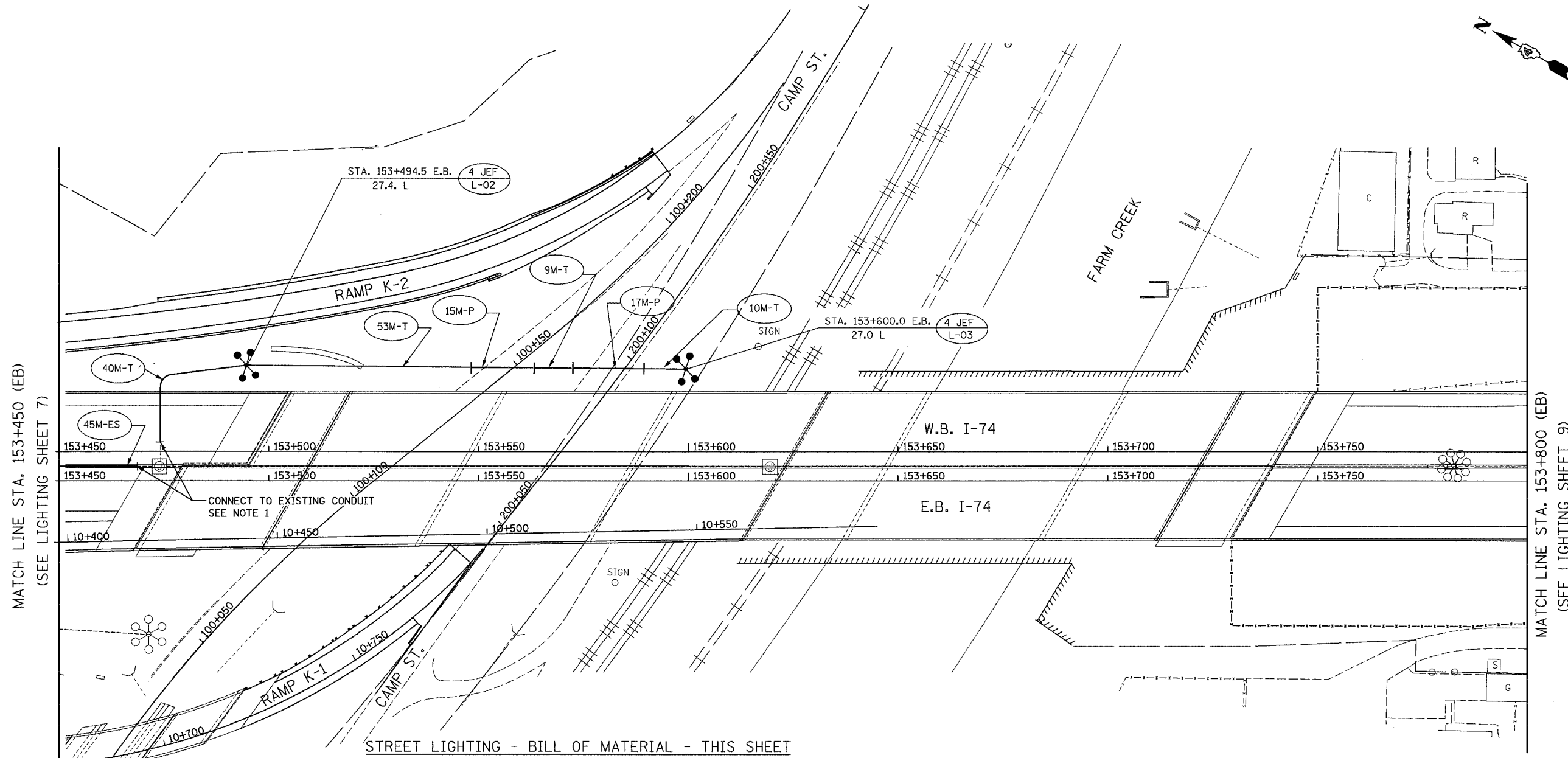
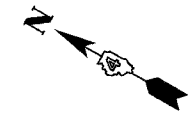


F.A.I. RTE.	SECTION	COUNTY	TOTAL SHEETS	SHEET NO.
74	.	TAZEWELL	1366	1218
STA. 153+450		TO STA. 153+800		
FED. ROAD DIST. NO.	ILLINOIS FED. AID PROJECT			
	* (90-11R-2, 90-13, 14, 14-1R-1			
CONTRACT NO. 68201				



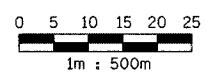
MATCH LINE STA. 153+450 (EB)
(SEE LIGHTING SHEET 7)

MATCH LINE STA. 153+800 (EB)
(SEE LIGHTING SHEET 9)

STREET LIGHTING - BILL OF MATERIAL - THIS SHEET

PAY ITEM	UNIT	QUANTITY
ROCK EXCAVATION FOR STRUCTURES	CU. M	1.8
CONDUIT IN TRENCH, 75mm DIA., PVC	METER	112.0
CONDUIT PUSHED, 75mm DIA., PVC	METER	32.0
CONDUIT EMBEDDED IN STRUCTURE, 75 mm DIA. PVC	METER	45.0
TRENCH AND BACKFILL FOR ELECTRICAL WORK	METER	112.0
HIGH MAST LUMINAIRE, (INSTALL ONLY)	EACH	8
LIGHT TOWER, INSTALL ONLY	EACH	2
LIGHT TOWER FOUNDATION	METER	15.3

NOTE 1:
USE CONDUIT COUPLING TO CONNECT PROPOSED TO EXISTING CONDUIT. COST IS INCLUDED IN " CONDUIT IN TRENCH, 75MM, DIA., PVC " PAY ITEM.



ab **alfred benesch & company**
CONSULTING ENGINEERS
205 NORTH MICHIGAN AVENUE, CHICAGO, ILLINOIS 60601

REVISIONS	
NAME	DATE

LIGHTING SHEET 8 OF 41
ILLINOIS DEPARTMENT OF TRANSPORTATION
PROPOSED LIGHTING PLAN
W.B. I-74
STA. 153+450 TO STA. 153+800
DRAWN BY DJK
CHECKED BY MKR
DATE: 12/20/04

12/20/2004 12:44:14 PM m:\p013573\working\74_contract\1111047.dwg