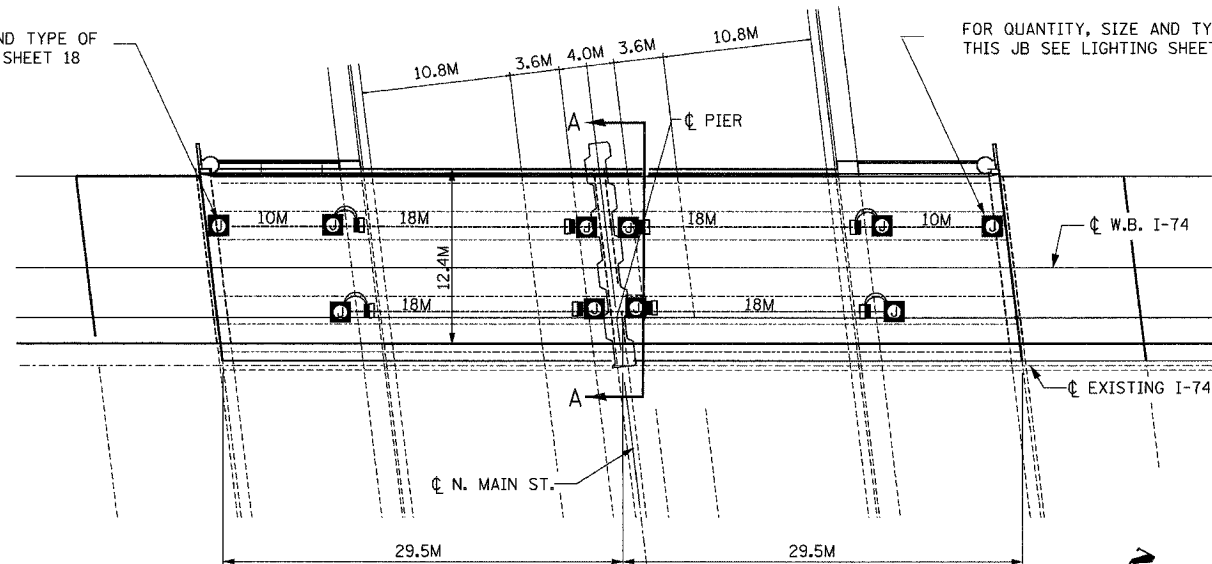


| | | | | |
|----------------------------------|----------|------------------|--------------|-----------|
| F.A.I. RTE. | SECTION | COUNTY | TOTAL SHEETS | SHEET NO. |
| 74 | * | TAZEWELL | 1366 | 1224 |
| STA. | TO STA. | | | |
| FED. ROAD DIST. NO. | ILLINOIS | FED. AID PROJECT | | |
| * (90-1)R-2, 90(13, 14, 14-1)R-1 | | | | |
| CONTRACT NO. 68201 | | | | |

FOR QUANTITY, SIZE AND TYPE OF THIS JB SEE LIGHTING SHEET 18

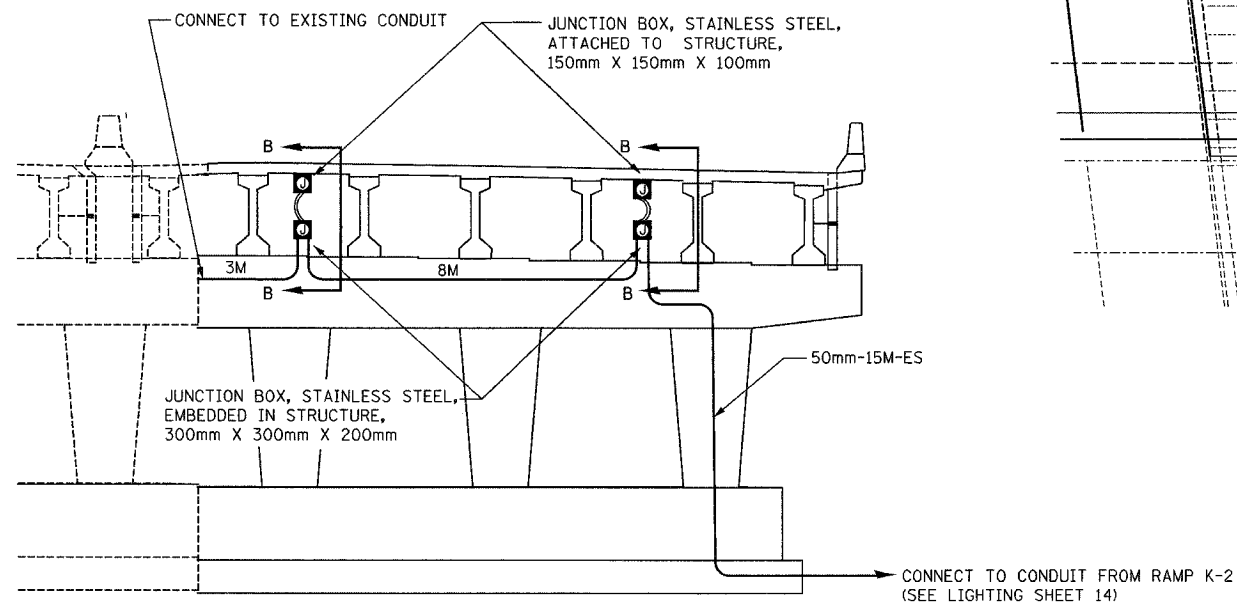


FOR QUANTITY, SIZE AND TYPE OF THIS JB SEE LIGHTING SHEET 18

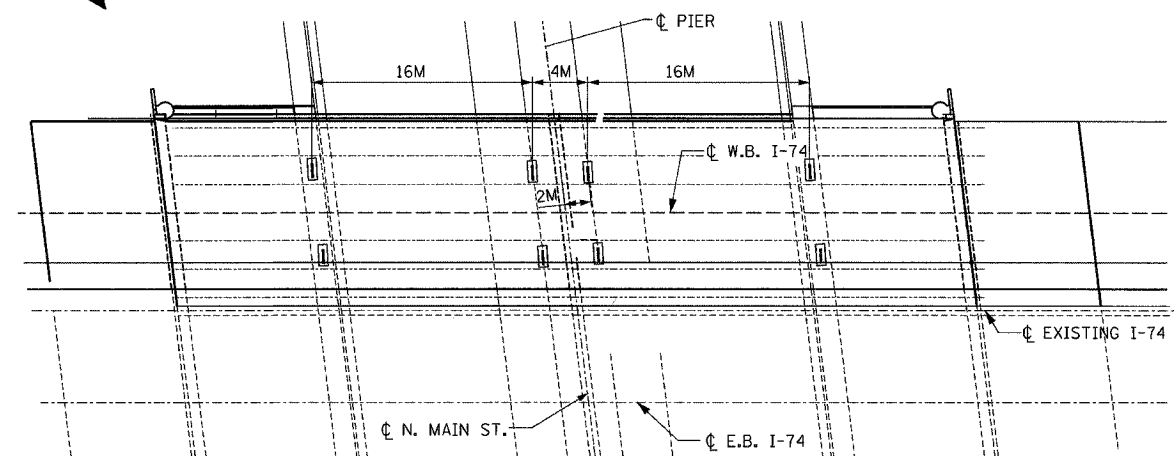
STREET LIGHTING - BILL OF MATERIAL - THIS SHEET

| PAY ITEM | UNIT | QTY. |
|---|-------|-------|
| CONDUIT ATTACHED TO STRUCTURE, 25mm DIA., GALVANIZED STEEL | METER | 100.0 |
| CONDUIT EMBEDDED IN STRUCTURE, 50mm DIA. PVC | METER | 26.0 |
| JUNCTION BOX, STAINLESS STEEL, ATTACHED TO STRUCTURE, 150mm X 150mm X 100mm | EACH | 8 |
| JUNCTION BOX, STAINLESS STEEL, EMBEDDED IN STRUCTURE, 300mm X 300mm X 200mm | EACH | 2 |
| UNDERPASS LUMINAIRE, (INSTALL ONLY) | EACH | 8 |

PLAN VIEW
ATTACHED CONDUIT & JUNCTION BOXES



SECTION A-A



PLAN VIEW
EMBEDDED CONCRETE INSERTS

- FOR WIRING PLAN SEE LIGHTING SHEET 20
- ALL EMBEDDED CONDUIT SHALL BE 50mm, PVC - SCH. 40, UNLESS OTHERWISE INDICATED.
- ALL JUNCTION BOXES ATTACHED TO STRUCTURE SHALL BE STAINLESS STEEL, 150mmx150mmx100mm, UNLESS OTHERWISE INDICATED.
- THE COST OF THE CONCRETE INSERTS SHALL BE INCLUDED IN THE PAY ITEM FOR "CONDUIT ATTACHED TO STRUCTURE."
- THE COST OF THE LIQUID-TIGHT CONDUIT SHALL BE INCLUDED IN THE PAY ITEM FOR "CONDUIT ATTACHED TO STRUCTURE."
- FOR SECTION B-B, SEE LIGHTING SHEET 15.

- LEGEND
- PROPOSED JUNCTION BOX
 - PROPOSED ATTACHED CONDUIT, 25mm DIA., GALVANIZED STEEL
 - PROPOSED EMBEDDED CONDUIT, 50mm DIA. PVC SCHEDULE 40
 - PROPOSED LIQUID-TIGHT FLEXIBLE CONDUIT, 25mm
 - EMBEDDED CONCRETE INSERT (SEE DETAIL SHEET 33)
 - UNDERPASS LUMINAIRE, HPSV, 100 WATT, 240 VOLT (SEE DETAIL SHEET 33).

ab **alfred benesch & company**
CONSULTING ENGINEERS
205 NORTH MICHIGAN AVENUE, CHICAGO, ILLINOIS 60601

| REVISIONS | |
|-----------|------|
| NAME | DATE |
| | |
| | |
| | |
| | |
| | |
| | |
| | |
| | |

LIGHTING SHEET 14 OF 41

ILLINOIS DEPARTMENT OF TRANSPORTATION

BRIDGE LIGHTING PLAN
W.B. I-74 OVER N. MAIN ST.

DATE: 12/20/04

DRAWN BY DJK/MMK
CHECKED BY MKR

m:\proj\1557\3\lighting\24\contract\111101-7-01-4br.mal.bsd.dgn

12/20/2004 12:44:20 PM