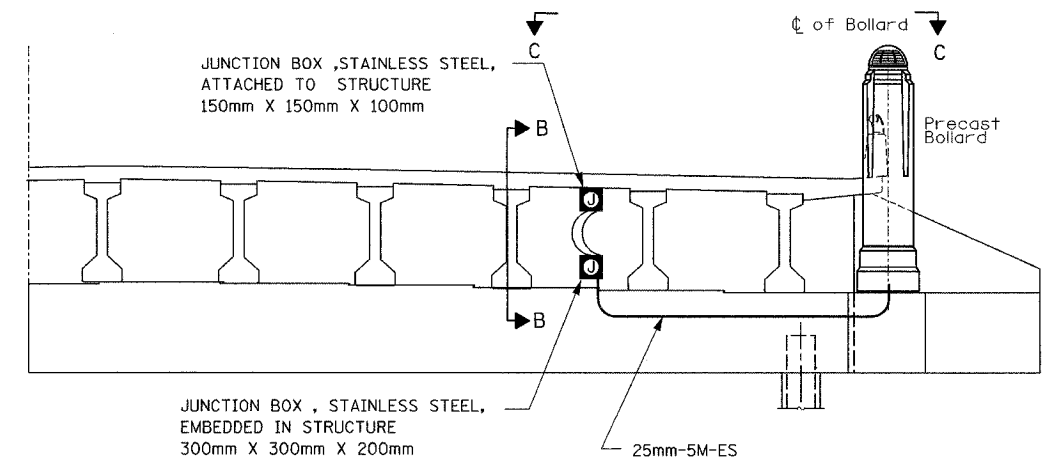
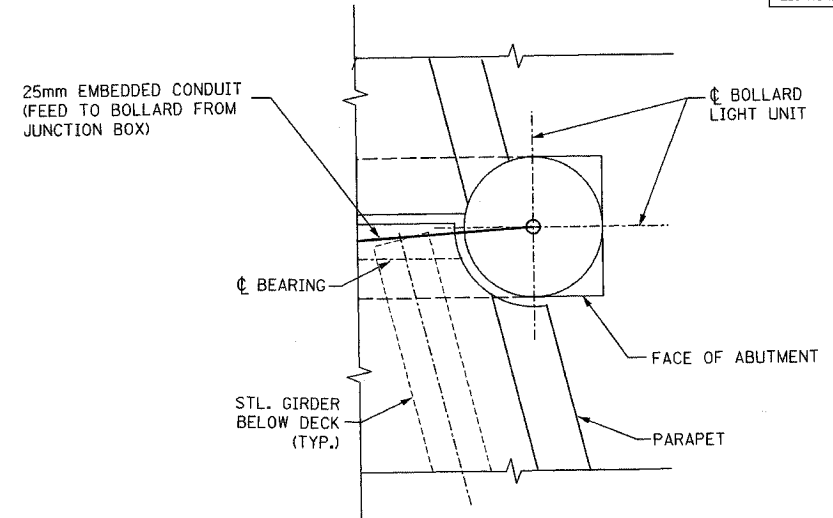


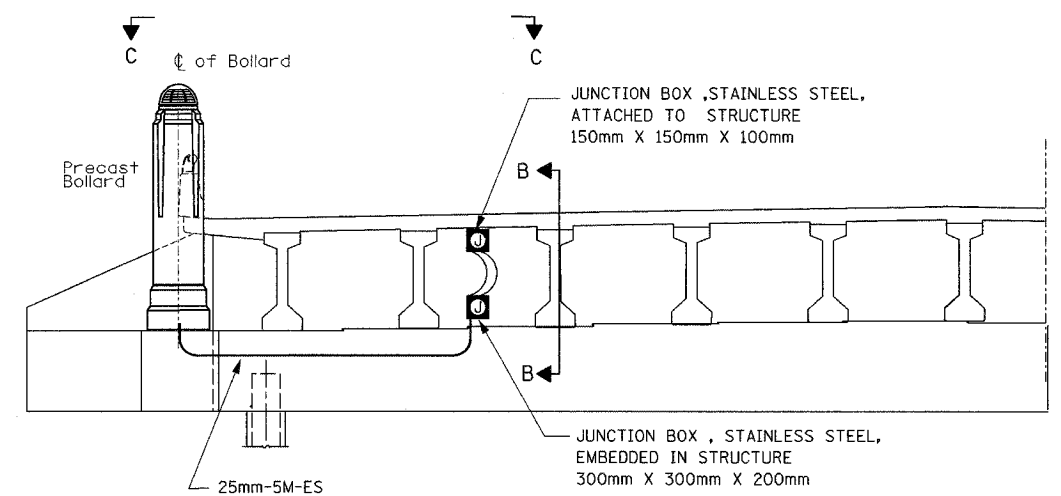
F.A.I. RTE.	SECTION	COUNTY	TOTAL SHEETS	SHEET NO.
74		TAZEWELL	1366	1225
STA.	TO STA.		FED. AID PROJECT	
FED. ROAD DIST. NO.		ILLINOIS	(90-11R-2)90(13, 14, 14-1R-1)	
CONTRACT NO. 68201				



**WESTBOUND ELEVATION AT NORTH ABUTMENT**  
(LOOKING NORTH)



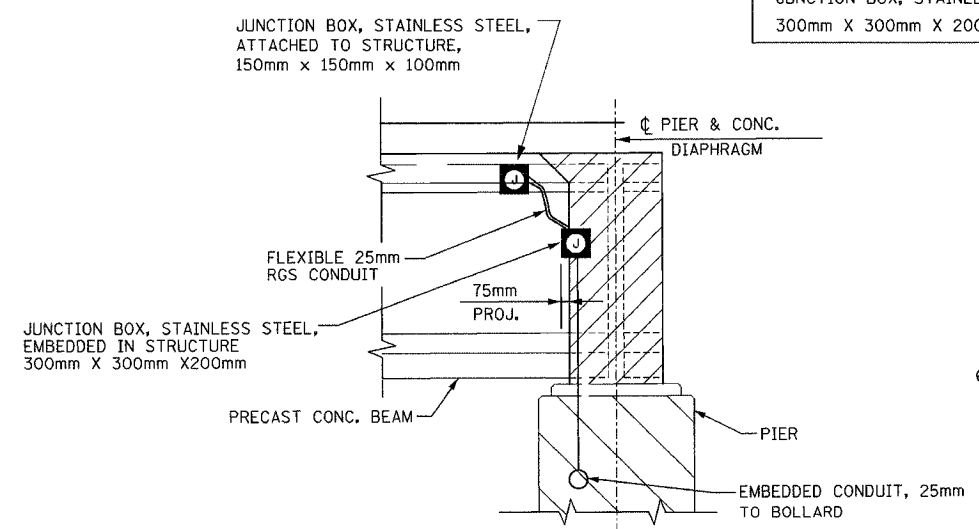
**SECTION C-C**  
**PARTIAL PLAN-BOLLARD LOCATION AT S. ABUTMENT**  
(SIMILAR FOR NORTH ABUTMENT)



**WESTBOUND ELEVATION AT SOUTH ABUTMENT**  
(LOOKING SOUTH)

**STREET LIGHTING - BILL OF MATERIAL - THIS SHEET**

PAY ITEM	UNIT	QTY.
CONDUIT EMBEDDED IN STRUCTURE, 25mm DIA., PVC	METER	10.0
JUNCTION BOX, STAINLESS STEEL, ATTACHED TO STRUCTURE 150mm X 150mm X 100mm	EACH	2
JUNCTION BOX, STAINLESS STEEL, EMBEDDED IN STRUCTURE 300mm X 300mm X 200mm	EACH	2



**SECTION B-B**  
(TYP. FOR P.P.C. BM. CONSTN.)

- NOTES:**
- FOR WIRING PLAN SEE LIGHTING SHEET 20.
  - ALL EMBEDDED CONDUIT SHALL BE 50mm, PVC - SCH. 40, UNLESS OTHERWISE INDICATED.
  - ALL JUNCTION BOXES ATTACHED TO STRUCTURE SHALL BE STAINLESS STEEL, 150mmx150mmx100mm, UNLESS OTHERWISE INDICATED.
  - THE COST OF THE CONCRETE INSERTS SHALL BE INCLUDED IN THE PAY ITEM FOR "CONDUIT ATTACHED TO STRUCTURE."
  - THE COST OF THE LIQUID-TIGHT CONDUIT SHALL BE INCLUDED IN THE PAY ITEM FOR "CONDUIT ATTACHED TO STRUCTURE."
  - FOR SECTIONS B-B AND C-C, SEE THIS SHEET.

- LEGEND**
- PROPOSED JUNCTION BOX
  - PROPOSED EMBEDDED CONDUIT, 25mm DIA. PVC SCHEDULE 40
  - PROPOSED LIQUID-TIGHT FLEXIBLE CONDUIT, 25mm

LIGHTING SHEET 15 OF 41

REVISIONS		ILLINOIS DEPARTMENT OF TRANSPORTATION
NAME	DATE	
		BRIDGE LIGHTING PLAN W.B. I-74 OVER N. MAIN ST.  DRAWN BY DJK/MMK CHECKED BY MKR DATE: 12/20/04

**ab** alfred benesch & company  
CONSULTING ENGINEERS  
205 NORTH MICHIGAN AVENUE, CHICAGO, ILLINOIS 60601

m:\proj\3573\lighting\4-contract\111101-7-27-brm\tr2.dgn 12/20/2004 12:42:11 PM