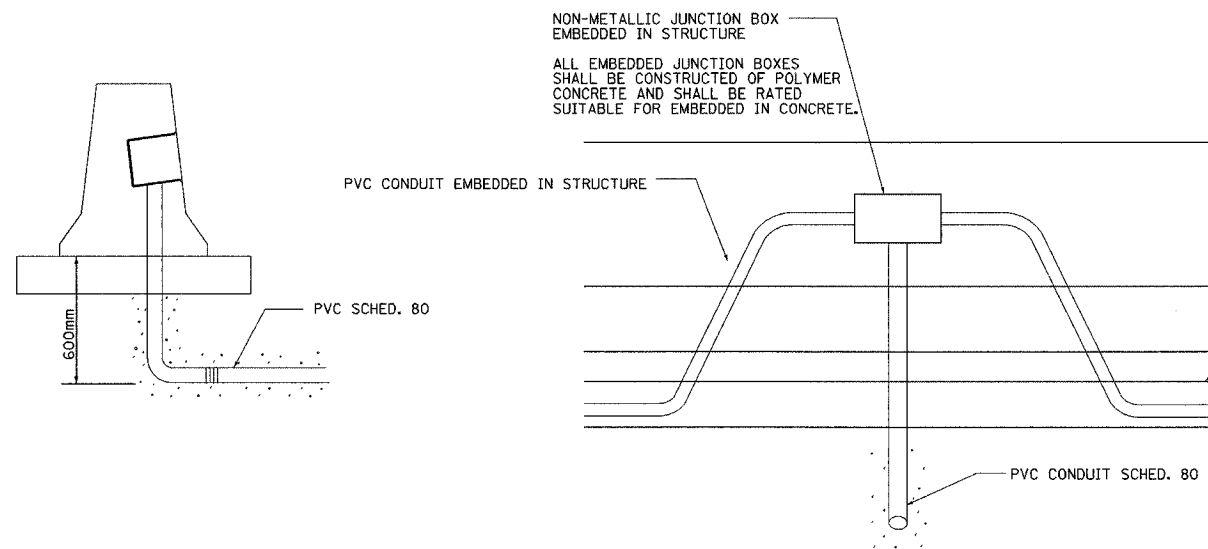
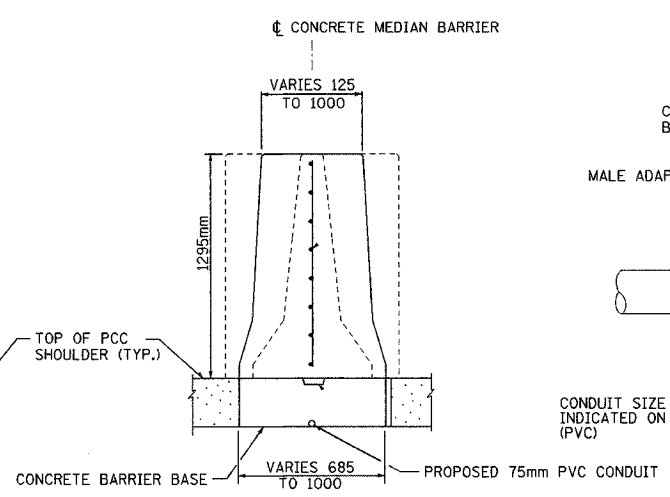


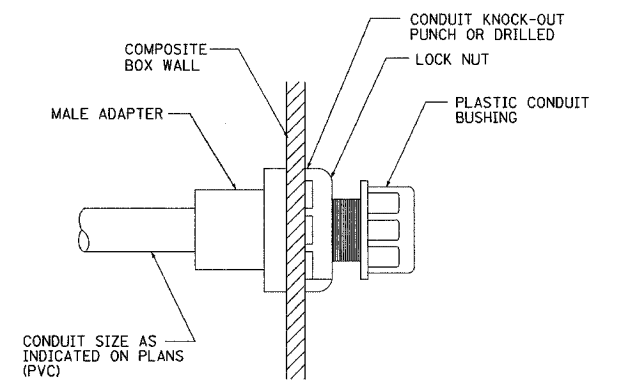
F.A.I. RTE.	SECTION	COUNTY	TOTAL SHEETS	SHEET NO.
74		TAZEWELL	1366	1241
STA.	TO STA.			
FED. ROAD DIST. NO.	ILLINOIS	FED. AID PROJECT		
* (90-11R-2;90(13, 14, 14-1R-1				
CONTRACT NO. 68201				



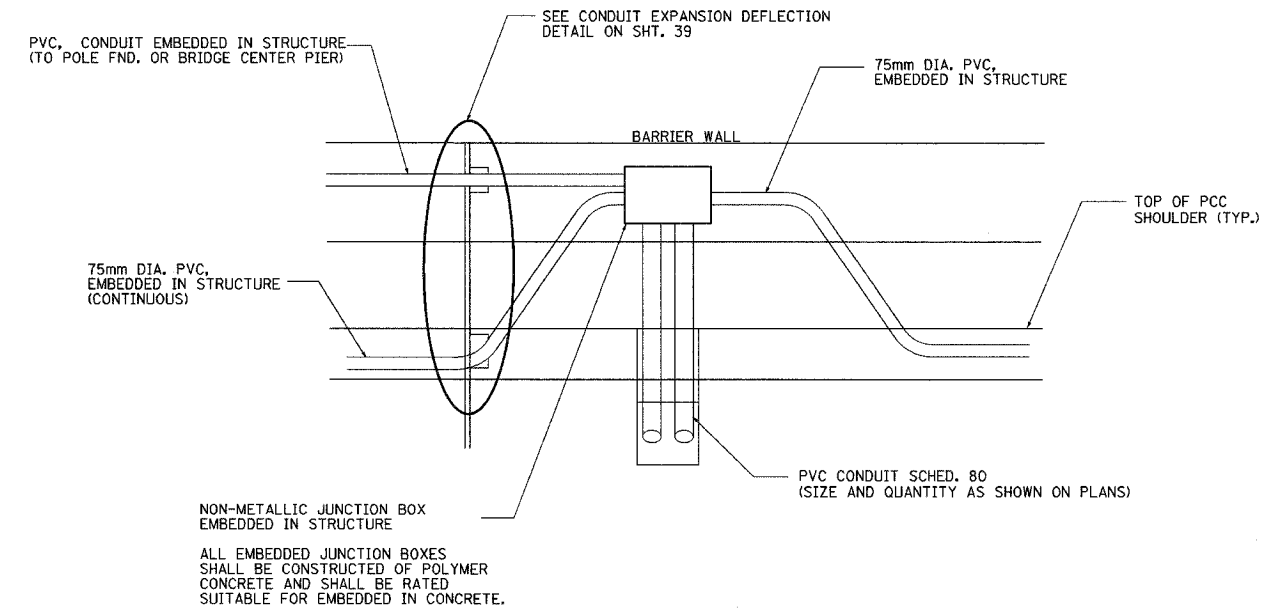
JUNCTION BOX EMBEDDED IN BARRIER WALL - DETAIL 1
N.T.S.



CONCRETE MEDIAN BARRIER
N.T.S.

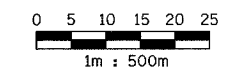


CONDUIT BOX ENTRY
TYPICAL ALL BARRIER BOXES
N.T.S.



BARRIER WALL JUNCTION BOX -DETAIL 2
N.T.S.

ns:\pca\3573\lighting\74-contract\1111001model3.dgn
 12/14/04 3:36 PM
 12/20/2004



ab alfred benesch & company
CONSULTING ENGINEERS
205 NORTH MICHIGAN AVENUE, CHICAGO, ILLINOIS 60601

REVISIONS	
NAME	DATE

ILLINOIS DEPARTMENT OF TRANSPORTATION

MISCELLANEOUS LIGHTING DETAILS

DRAWN BY JSS/MMK
CHECKED BY MKR
DATE: 12/20/04