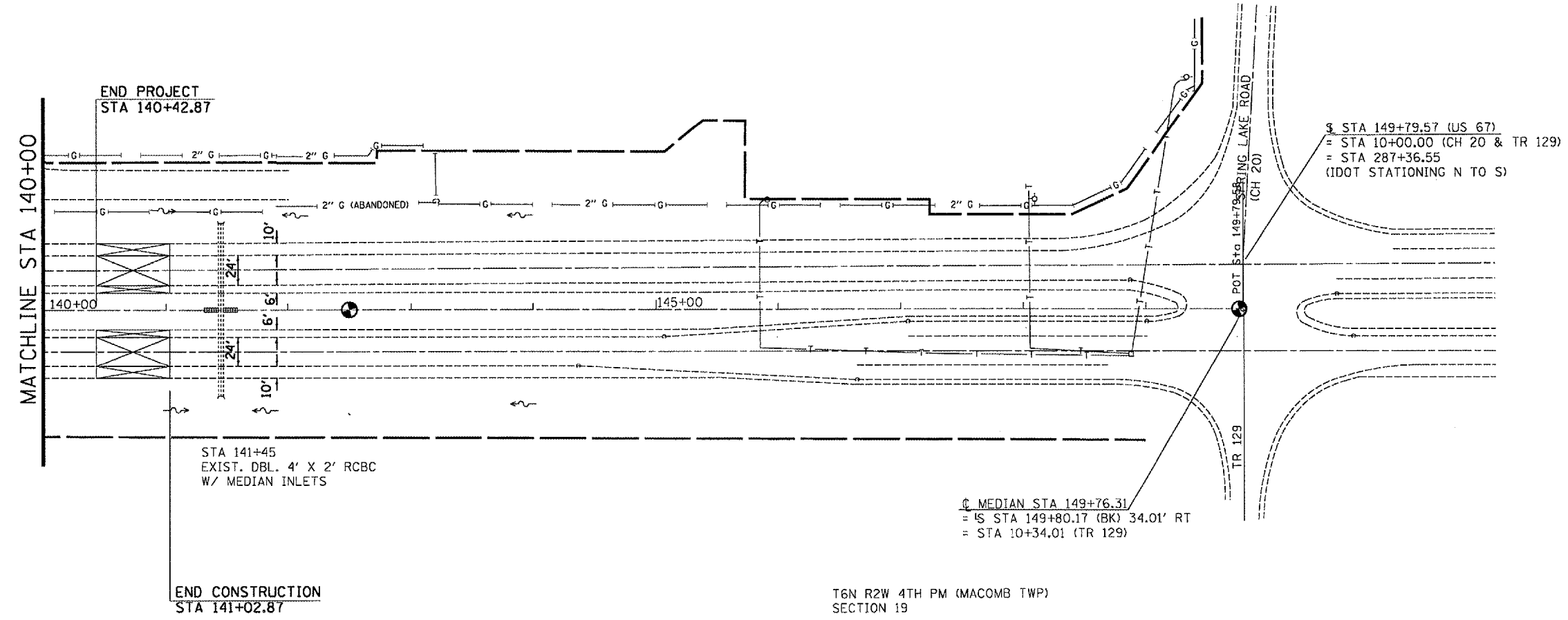


F.A.P. RTE.	SECTION	COUNTY	TOTAL SHEETS	SHEET NO.
310	138-21RS	MCDONOUGH	66	32
STA. 140+00		TO STA. E.O.P.		
FED. ROAD DIST. NO.	ILLINOIS	FED. AID PROJECT		



NOTE: The last 60' of 4 1/2" bituminous surface removal shall be paid for as BITUMINOUS SURFACE REMOVAL - BUTT JOINT.

T6N R3W 4TH PM (EMMET TWP)
SECTION 24



STA 141+45
EXIST. DBL. 4' X 2' RCBC
W/ MEDIAN INLETS

☉ MEDIAN STA 149+76.31
= IS STA 149+80.17 (BK) 34.01' RT
= STA 10+34.01 (TR 129)

§ STA 149+79.57 (US 67)
= STA 10+00.00 (CH 20 & TR 129)
= STA 287+36.55
(IDOT STATIONING N TO S)

T6N R2W 4TH PM (MACOMB TWP)
SECTION 19

REMOVAL LEGEND

- BUTT JOINT
- GUARDRAIL REMOVAL
- CULVERT REMOVAL

EROSION CONTROL LEGEND

- PERIMETER EROSION BARRIER
- INLET & PIPE PROTECTION
- GRADE & SHAPE DITCH



REVISIONS	
NAME	DATE

ILLINOIS DEPARTMENT OF TRANSPORTATION
EXISTING / REMOVAL
STA 140+00 - E.O.P.

SCALE: VERT. 1" = 50'
HORIZ. DATE
DRAWN BY CADD
CHECKED BY

PLOT DATE = 3/20/2005
FILE NAME = c:\p\cadd\68334\hshw.dgn
PLOT SCALE = 1/8" = 100'
REFERENCE = 68334