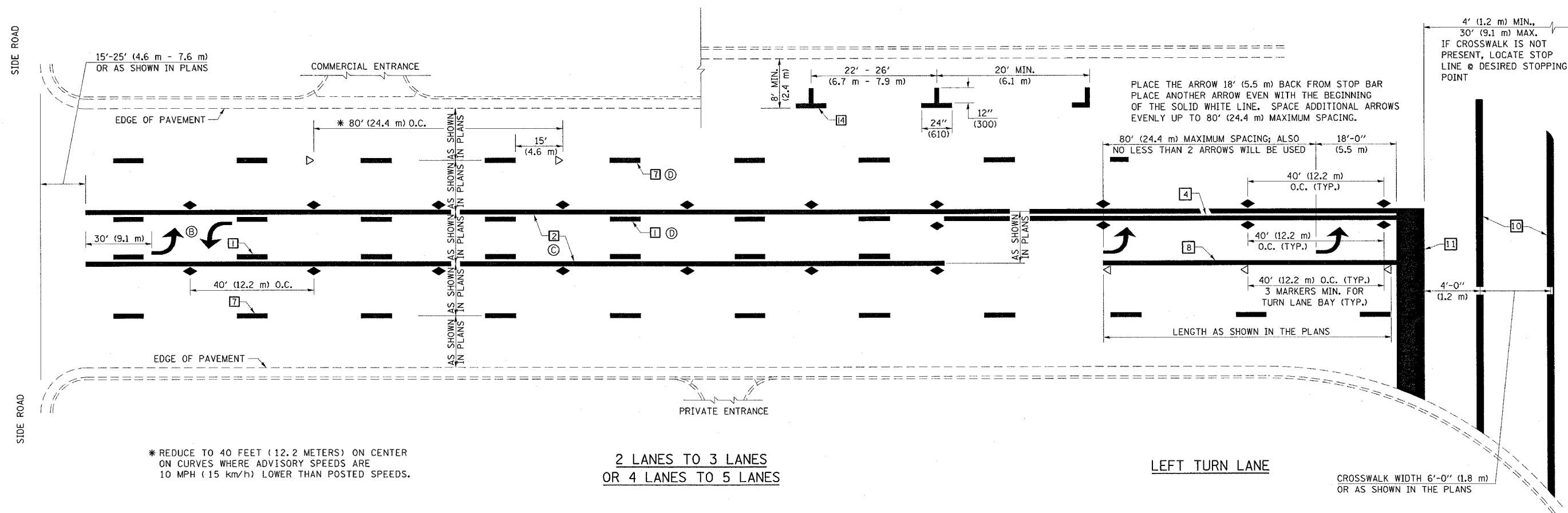


TYPICAL APPLICATIONS OF PAVEMENT MARKINGS AND MARKERS



PLACE THE ARROW 18' (5.5 m) BACK FROM STOP BAR
 PLACE ANOTHER ARROW EVEN WITH THE BEGINNING
 OF THE SOLID WHITE LINE. SPACE ADDITIONAL ARROWS
 EVENLY UP TO 80' (24.4 m) MAXIMUM SPACING.

80' (24.4 m) MAXIMUM SPACING; ALSO
 NO LESS THAN 2 ARROWS WILL BE USED

* REDUCE TO 40 FEET (12.2 METERS) ON CENTER
 ON CURVES WHERE ADVISORY SPEEDS ARE
 10 MPH (15 km/h) LOWER THAN POSTED SPEEDS.

2 LANES TO 3 LANES
OR 4 LANES TO 5 LANES

LEFT TURN LANE

CROSSWALK WIDTH 6'-0" (1.8 m)
 OR AS SHOWN IN THE PLANS

SHEET 2 OF 3

DESIGNED	NAME	DATE	REVISIONS
J.M.H.	5/85	6/88	NAME
FMS	CTD	6/85	6/88
CADD NO.	F-5.25		K.A.G.

ALL DIMENSIONS ARE IN INCHES (MILLIMETERS)
 UNLESS OTHERWISE SHOWN.