

F.A.S. RTE.	SECTION	COUNTY	TOTAL SHEETS	SHEET NO.
1678	6 MFT, Q	EDGAR	29	1

D-95-015-05

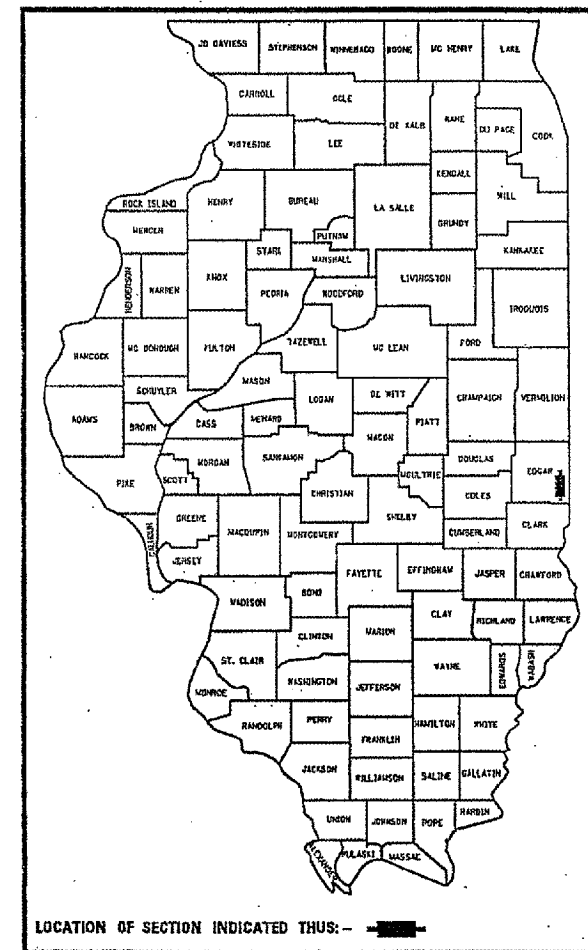
STATE OF ILLINOIS
DEPARTMENT OF TRANSPORTATION
DIVISION OF HIGHWAYS

**PROPOSED
HIGHWAY PLANS**

F.A.S. ROUTE 1678 (SCOTTLAND ROAD)
SECTION 6 MFT, Q
EDGAR COUNTY

SEAL COAT 2 MILES NORTH OF SCOTTLAND TO U.S. 36
C-95-016-05

FOR INDEX OF SHEETS, SEE SHEET NO. 2
FOR SUMMARY OF QUANTITIES, SEE SHEET NO. 4



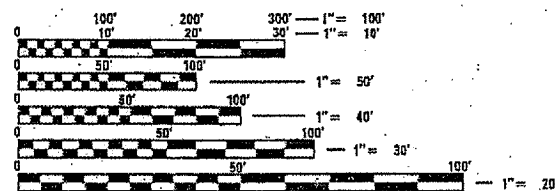
(217) 465-4181

PROJECT ENGINEER: JIM BRANDENBURG

DESIGNER: CAREN ELLEDGE

CURRENT ADT:
F.A.S. 1678 = 350 (2003)

DESIGN DESIGNATION
MAJOR COLLECTOR



FULL SIZE PLANS HAVE BEEN PREPARED USING STANDARD ENGINEERING SCALES. REDUCED SIZED PLANS WILL NOT CONFORM TO STANDARD SCALES. IN MAKING MEASUREMENTS ON REDUCED PLANS, THE ABOVE SCALES MAY BE USED.

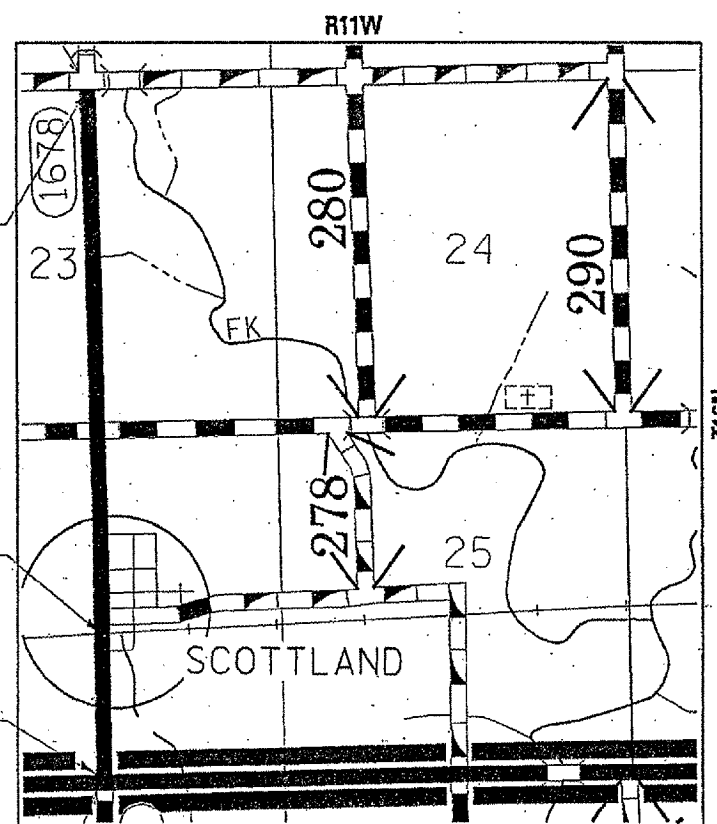
J.U.L.I.E.
JOINT UTILITY LOCATION INFORMATION FOR EXCAVATION
1-800-892-0123

CONTRACT NO. 70467

SECTION 6 MFT, Q
ENDS STA. 105+45

RAILROAD OMISSION
STA. 23+00 - STA. 23+40

SECTION 6 MFT, Q
BEGINSS STA. 0+09



R11W
SCALE: N/A



STATE OF ILLINOIS
DEPARTMENT OF TRANSPORTATION
DIVISION OF HIGHWAYS

SUBMITTED 3/24 2005

 DEPUTY DIRECTOR OF HIGHWAYS, REGION ENGINEER

May 13 2005

 ENGINEER OF DESIGN AND ENVIRONMENT

May 13 2005

 DIRECTOR OF HIGHWAYS, CHIEF ENGINEER

**PRINTED BY THE AUTHORITY
OF THE STATE OF ILLINOIS**

TOTAL LENGTH OF SECTION & PROJECT = 10,536 FEET = 1.995 MILES
NET LENGTH OF SECTION & PROJECT = 10,476 FEET = 1.984 MILES