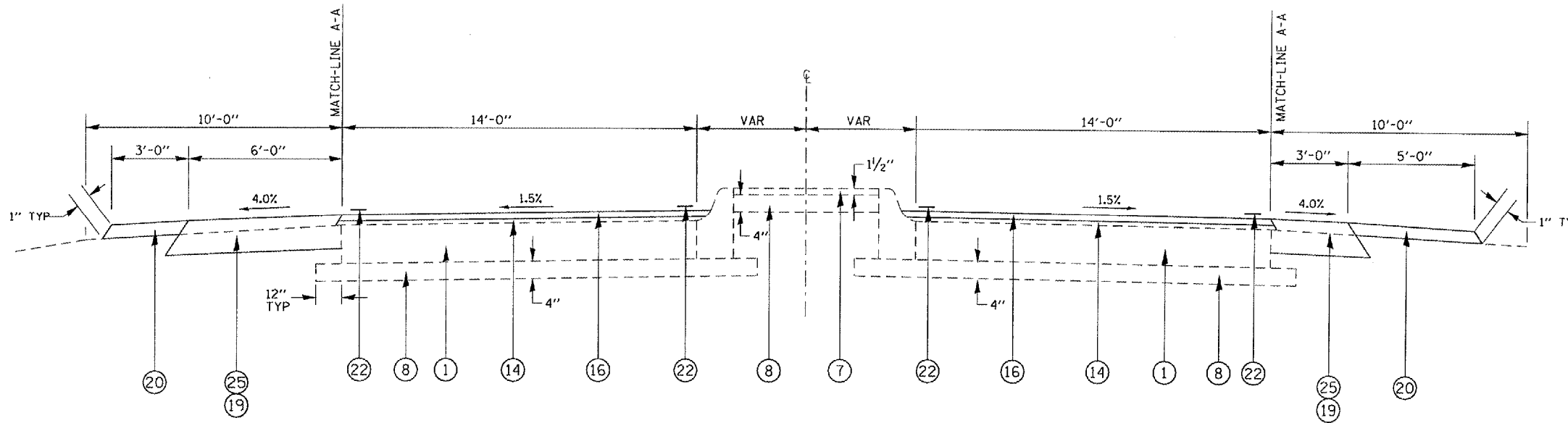


|                     |                           |          |              |           |
|---------------------|---------------------------|----------|--------------|-----------|
| F.A.P. RTE.         | SECTION                   | COUNTY   | TOTAL SHEETS | SHEET NO. |
| 662                 |                           | MACOUPIN | 74           | 21        |
| STA.                | TO STA.                   |          |              |           |
| FED. ROAD DIST. NO. | ILLINOIS FED. AID PROJECT |          |              |           |

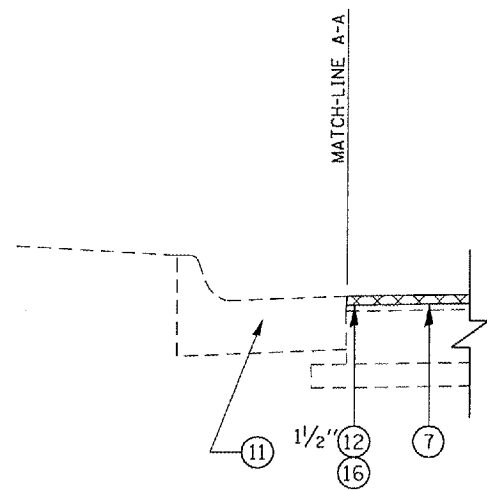
• 10Z (RS-1); (V,T) R-2; SRS-4

LEGEND

- ① EX PCC PAVEMENT, 9"
- ② EX PCC PAVEMENT, 7"-8"-7"
- ③ EX PCC BASE COURSE WIDENING, 8"
- ④ EX PCC BASE COURSE WIDENING, 9"
- ⑤ EX BITUMINOUS BASE COURSE WIDENING, 8"
- ⑥ EX PCC BASE COURSE, 8"
- ⑦ EX BITUMINOUS CONC. SURFACE
- STA 129+96.00 TO STA 131+20.00 - 2 1/2"
- STA 131+20.00 TO STA 265+80.00 - 0"
- STA 265+80.00 TO STA 321+81.00 - 7" ± 1"
- STA 321+81.00 TO STA 349+61.00 - 0"
- STA 349+61.00 TO STA 399+40.00 - 7" ± 2"
- STA 399+40.00 TO STA 478+00.00 - 0"
- ⑧ EX SUB-BASE GRANULAR MATERIAL
- ⑨ EX CONCRETE GUTTER, TYPE B (TO BE REMOVED)
- ⑩ EX STEEL PLATE BEAM GUARDRAIL
- ⑪ EX COMBINATION CONC. CURB & GUTTER
- ⑫ PR BIT. SURFACE REMOVAL, VAR. DEPTH
- ⑬ PR LEVELING BINDER (MACHINE METHOD), SUPERPAVE, 3/4" AVG. (SEE BIT. MIXTURE TABLE)
- ⑭ PR LEVELING BINDER (MACHINE METHOD), SUPERPAVE, 1" AVG. (SEE BIT. MIXTURE TABLE)
- ⑮ PR LEVELING BINDER (MACHINE METHOD) SUPERPAVE, VAR. DEPTH (1/2" MIN) (SEE BIT. MIXTURE TABLE)
- ⑯ PR BIT. CONCRETE SURFACE COURSE, SUPERPAVE 1 1/2" (SEE BIT. MIXTURE TABLE)
- ⑰ PR BIT. SHLDS, SUPERPAVE, 2-1/2" (SEE BIT. MIXTURE TABLE)
- ⑱ PR BIT. SHLDS, SUPERPAVE, 8" (SEE BIT. MIXTURE TABLE)
- ⑲ PR BIT. SHLDS, SUPERPAVE, 8" (SEE BIT. MIXTURE TABLE)
- ⑳ PR AGG. SHLDS., TYPE B
- ㉑ PR CONC. GUTTER, TY-A (STD 606101)
- ㉒ PR PREFORMED PLASTIC PAVMENT MARKING, TY-B, LINE - 5"
- ㉓ PR PAINT PAVMENT MARKING, LINE - 5"
- ㉔ PR GRADING AND SHAPING SHOULDERS
- ㉕ PR EXCAVATING AND GRADING EX SHLD.
- ㉖ PR EXCAVATING AND GRADING EX SHLD., SPECIAL
- ㉗ PR EARTH EXCAVATION WIDENING
- ㉘ PR EARTH EMBANKMENT
- ㉙ PR BIT. BASE COURSE WIDENING, SUPERPAVE, 10" (SEE BIT. MIXTURE TABLE)



**PART A** LT STA 129+96.00 TO LT STA 131+14.00 - EX BIT. CONC. SURF. - ⑫ 1 1/2" & ⑯ ONLY  
 RT STA 129+96.00 TO RT STA 131+23.00 - EX BIT. CONC. SURF. - ⑫ 1 1/2" & ⑯ ONLY  
 LT STA 131+14.00 TO LT STA 132+20.00  
 RT STA 131+23.00 TO RT STA 132.20.00  
 STA 132+20.00 TO STA 132+88.00 - EX CORRUGATED MEDIAN TO BE REMOVED AND REPLACED  
 STA 132+88.00 TO STA 132+89.45 - NO CONC. MED.; VAR. WIDTH PAVT.



**PART A** LT STA 129+96.00 TO LT STA 131+14.00  
 RT STA 129+96.00 TO RT STA 130+84.00

| REVISIONS |      | ILLINOIS DEPARTMENT OF TRANSPORTATION   |
|-----------|------|---|
| NAME      | DATE |   |
|           |      | <b>PART A</b><br><b>TYPICAL SECTIONS</b><br><br>SCALE: VERT.      DRAWN BY MAW<br>HORIZ.              CHECKED BY<br>DATE 04-07-03 |
|           |      |   |
|           |      |   |
|           |      |   |
|           |      |   |
|           |      |   |
|           |      |   |
|           |      |   |
|           |      |   |
|           |      |   |