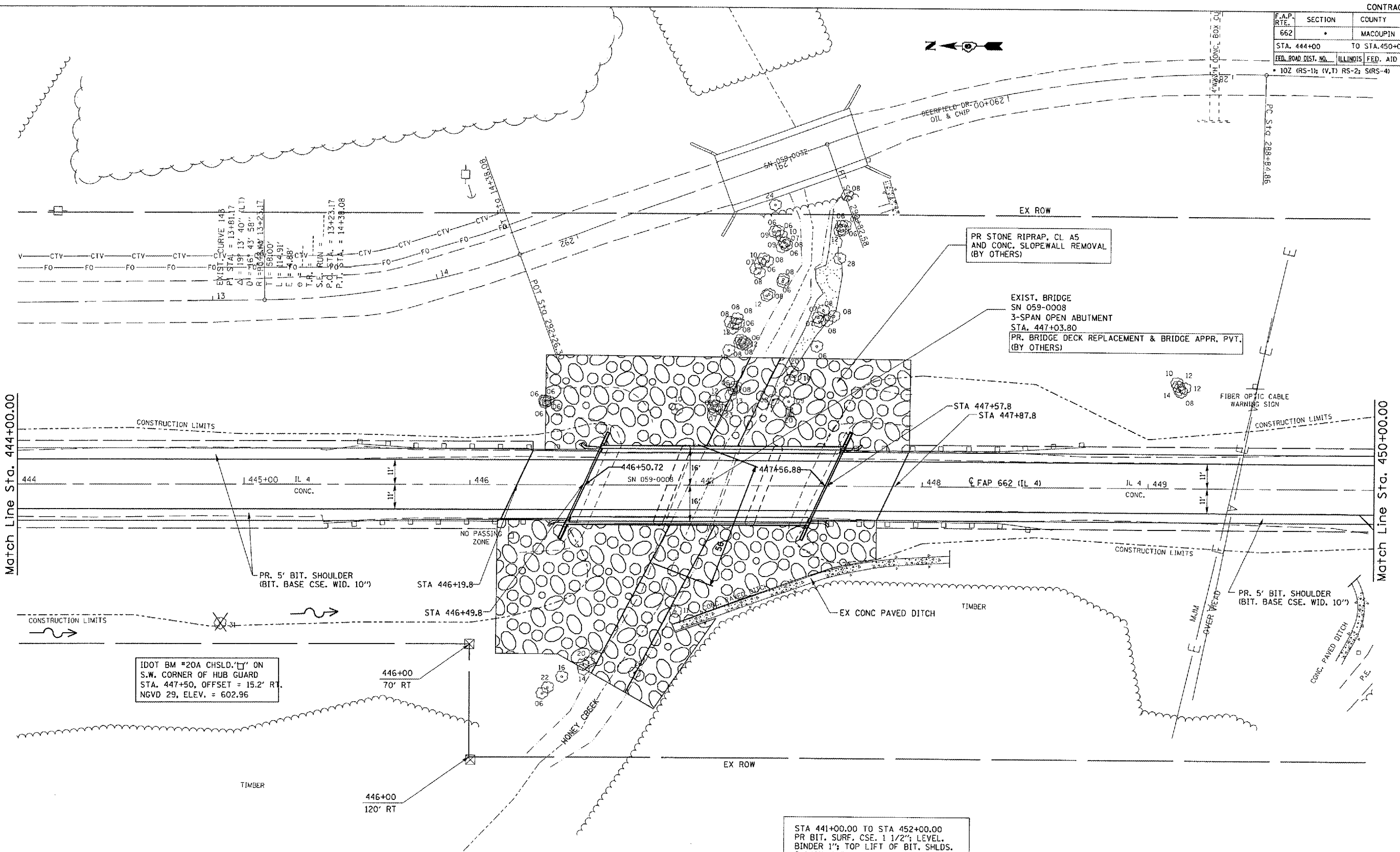


F.A.P. RTE.	SECTION	COUNTY	TOTAL SHEETS
662		MACOUPIN	74
STA. 444+00 TO STA. 450+00			46
ILLINOIS FED. AID PROJECT			
• 10Z (RS-1); (V,T) RS-2; SRS-4)			



STA 441+00.00 TO STA 452+00.00  
 PR BIT, SURF. CSE. 1 1/2"; LEVEL, BINDER 1"; TOP LIFT OF BIT, SHLDS. 2 1/2"; AND AGG. SHLDS. (BY OTHERS)

REVISIONS	
NAME	DATE

ILLINOIS DEPARTMENT OF TRANSPORTATION  
**PLAN VIEW**  
 HONEY CREEK  
 SCALE: VERT. DATE  
 HORIZ. DATE  
 DRAWN BY 80K  
 CHECKED BY JCN

PLOT DATE = 3/28/2005  
 PLOT NAME = I:\projects\72405\plan\plan.dgn  
 PLOT SCALE = 43.3724 / IN.  
 USER NAME = bsnj