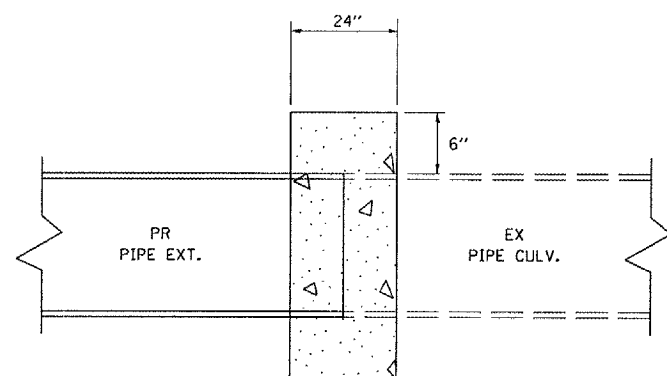
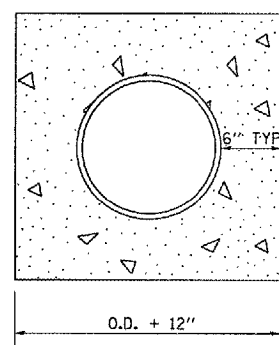


CONTRACT NO.				
F.A. RTE.	SECTION	COUNTY	TOTAL SHEETS	SHEET NO.
662		MACOUPIN	74	57
STA.	TO STA.			
FED. ROAD DIST. NO.	ILLINOIS	FED. AID PROJECT		
• 10Z(RS-1);(V,T) RS-2;(SIRS-4)				



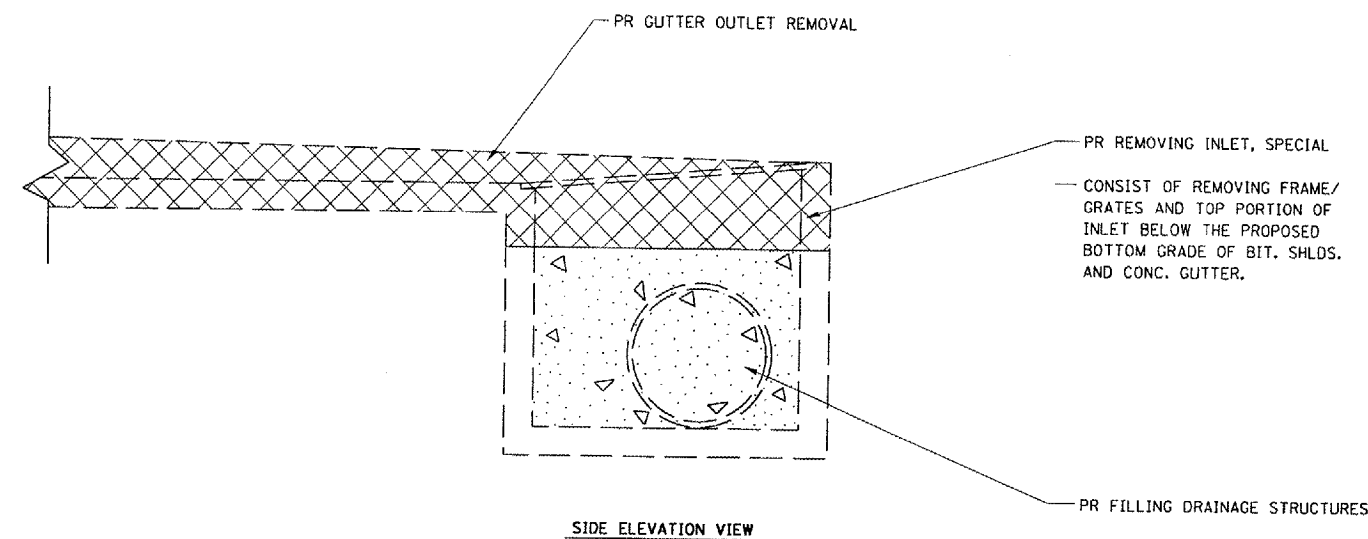
PLAN VIEW



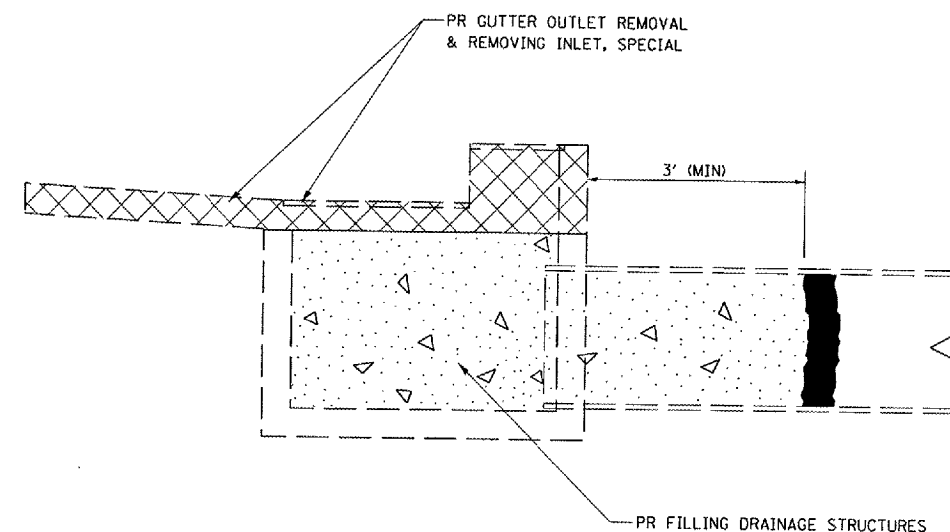
END VIEW

- NOTE:
- USE CLASS SI CONC. THROUGHOUT.
 - FURNISHING ALL MATERIALS LABOR, AND EQUIPMENT TO CONSTRUCT CONC. COLLARS WILL BE PAID FOR AT THE CONTRACT UNIT PRICE EACH FOR "CONCRETE COLLAR."
 - CONC. COLLARS FOR $\leq 30"$ DIA. PIPE REQUIRE NO REIN. BARS.

CONCRETE COLLAR
DETAIL



SIDE ELEVATION VIEW



END ELEVATION VIEW

INLET REMOVAL SPECIAL AND FILLING DRAINAGE
STRUCTURE DETAILS

REVISIONS	
NAME	DATE

ILLINOIS DEPARTMENT OF TRANSPORTATION

MISCELLANEOUS DETAILS

SCALE: VERT.
DATE

DRAWN BY
CHECKED BY

PLOT DATE = 3/29/2006
FILE NAME = c:\projects\1052802\detail.dgn
PLOT SCALE = 43.3735 / IN.
USER NAME = baji