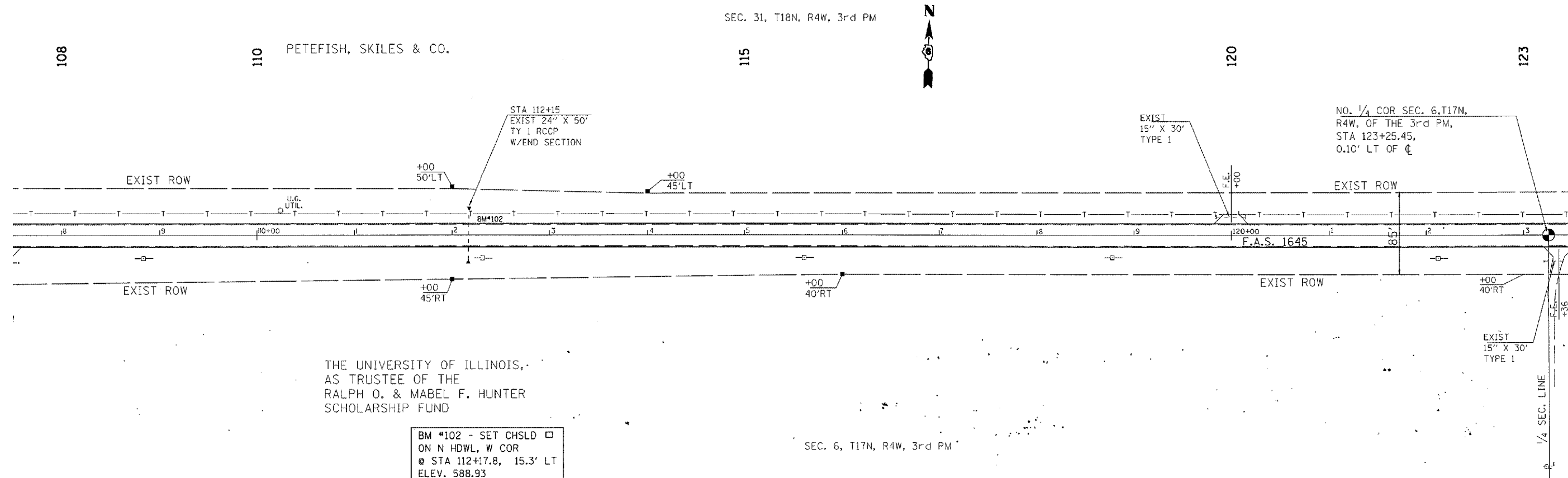


F.A.S. TYP.	SECTION	COUNTY	TOTAL SHEETS	SHEET NO.
1645	150RS	SANGAMON	28	13
STA. 108+00		TO STA. 123+00		
FED. ROAD DIST. NO. 1		ILLINOIS	FED. AID PROJECT	

CONTRACT NO. 72876

PLAN	DATE
NO. 1	
NO. 2	
NO. 3	
NO. 4	
NO. 5	
NO. 6	
NO. 7	
NO. 8	
NO. 9	
NO. 10	
NO. 11	
NO. 12	
NO. 13	
NO. 14	
NO. 15	
NO. 16	
NO. 17	
NO. 18	
NO. 19	
NO. 20	
NO. 21	
NO. 22	
NO. 23	
NO. 24	
NO. 25	
NO. 26	
NO. 27	
NO. 28	
NO. 29	
NO. 30	

PROFILE	DATE
NO. 1	
NO. 2	
NO. 3	
NO. 4	
NO. 5	
NO. 6	
NO. 7	
NO. 8	
NO. 9	
NO. 10	
NO. 11	
NO. 12	
NO. 13	
NO. 14	
NO. 15	
NO. 16	
NO. 17	
NO. 18	
NO. 19	
NO. 20	
NO. 21	
NO. 22	
NO. 23	
NO. 24	
NO. 25	
NO. 26	
NO. 27	
NO. 28	
NO. 29	
NO. 30	



BM #102 - SET CHSLD □
ON N HDWL, W COR
@ STA 112+17.8, 15.3' LT
ELEV. 588.93

ILLINOIS DEPARTMENT OF TRANSPORTATION

F.A.S. ROUTE 1645
SECTION 150RS
SANGAMON COUNTY