

F.A.S. FIG.	SECTION	COUNTY	TOTAL SHEETS	SHEET NO.
1645	150RS	SANGAMON	28	14
STA. 123+00		TO STA. 138+00		
FED. ROAD DIST. NO. 7		ILLINOIS	FED. AID PROJECT	

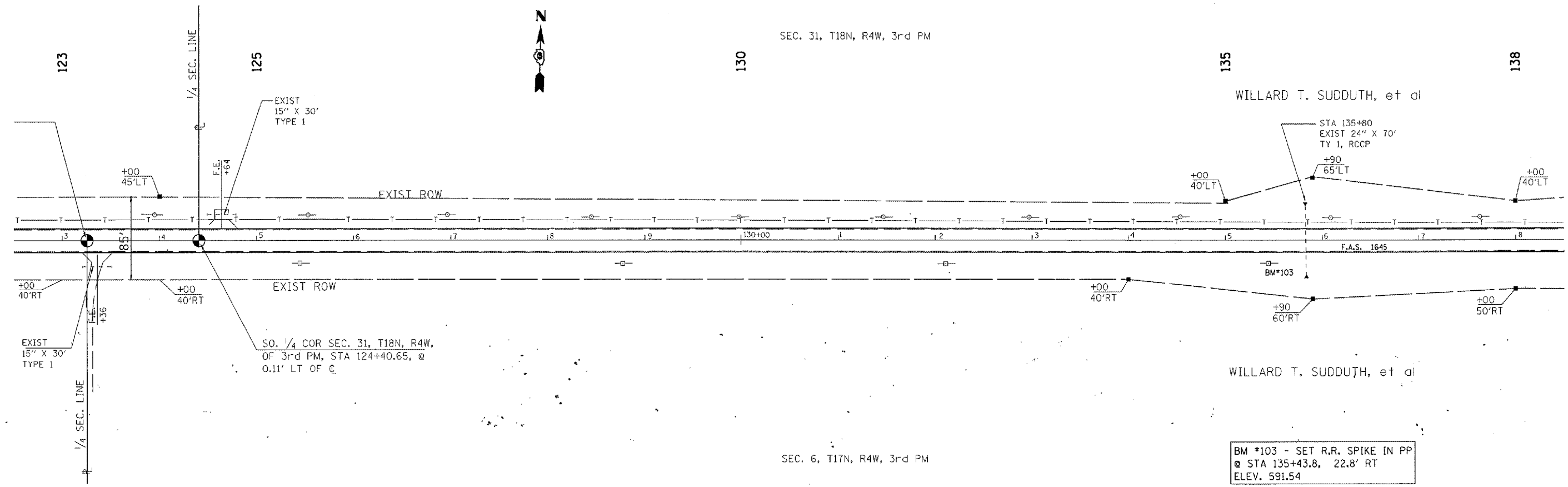
CONTRACT NO. 72876

PLAN

SUBMITTED	DATE
NOTE BOOK	
DESIGNED	
CHECKED	
BY	
NO.	

PROFILE

SUBMITTED	DATE
NOTE BOOK	
DESIGNED	
CHECKED	
BY	
NO.	



BM \*103 - SET R.R. SPIKE IN PP  
 @ STA 135+43.8, 22.8' RT  
 ELEV. 591.54

ILLINOIS DEPARTMENT OF TRANSPORTATION

F.A.S. ROUTE 1645  
 SECTION 150RS  
 SANGAMON COUNTY