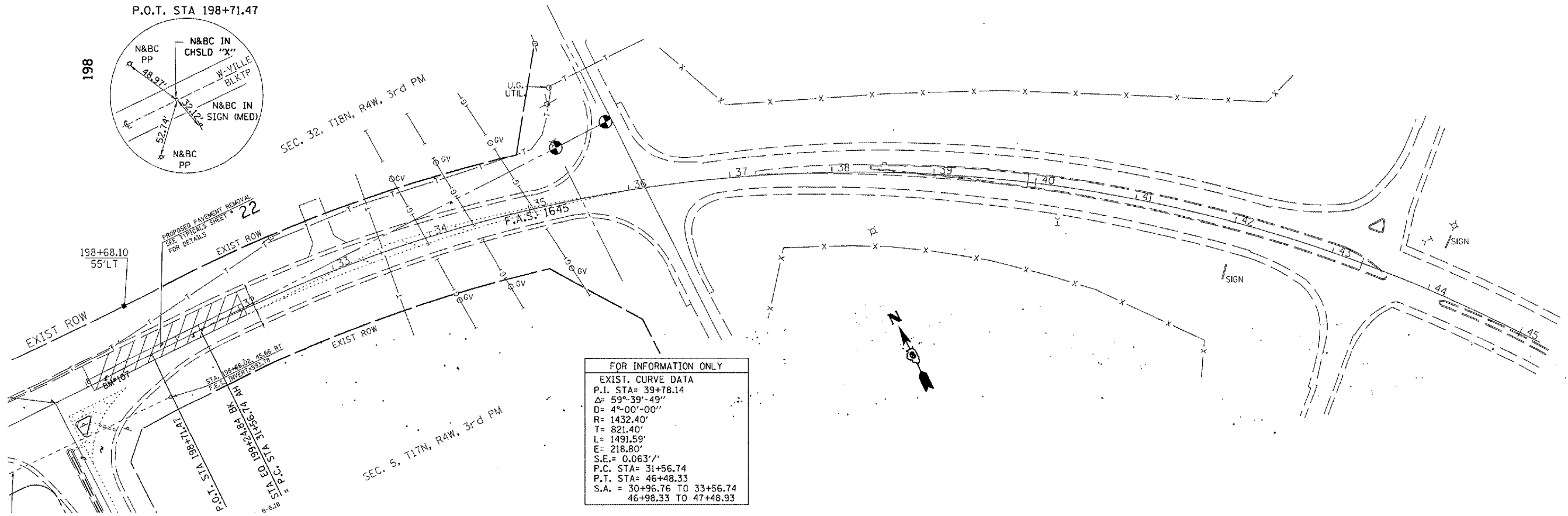
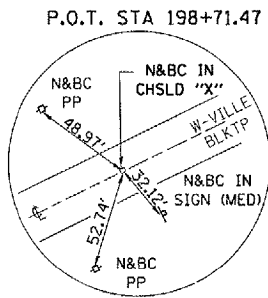


F.A.S. NO.	SECTION	COUNTY	SHEET NO.	SHEET TOTAL
1645	150RS	SANGAMON	28	19
STA. 198+00		TO STA.		
FED. ROAD DIST. NO. 7		ILLINOIS	FED. AID PROJECT	

CONTRACT NO. 72876

PLAN	DATE
DESIGNED BY	
CHECKED BY	
DATE	

PROFILE	DATE
DESIGNED BY	
CHECKED BY	
DATE	



FOR INFORMATION ONLY	
EXIST. CURVE DATA	
P.I. STA=	39+78.14
Δ=	59°-39'-49"
D=	4°-00'-00"
R=	1432.40'
T=	821.40'
L=	1491.59'
E=	218.80'
S.E.=	0.063'/'
P.C. STA=	31+56.74
P.T. STA=	46+48.33
S.A. =	30+96.76 TO 33+56.74
	46+98.33 TO 47+48.93

ILLINOIS DEPARTMENT OF TRANSPORTATION

F.A.S. ROUTE 1645
SECTION 150RS
SANGAMON COUNTY