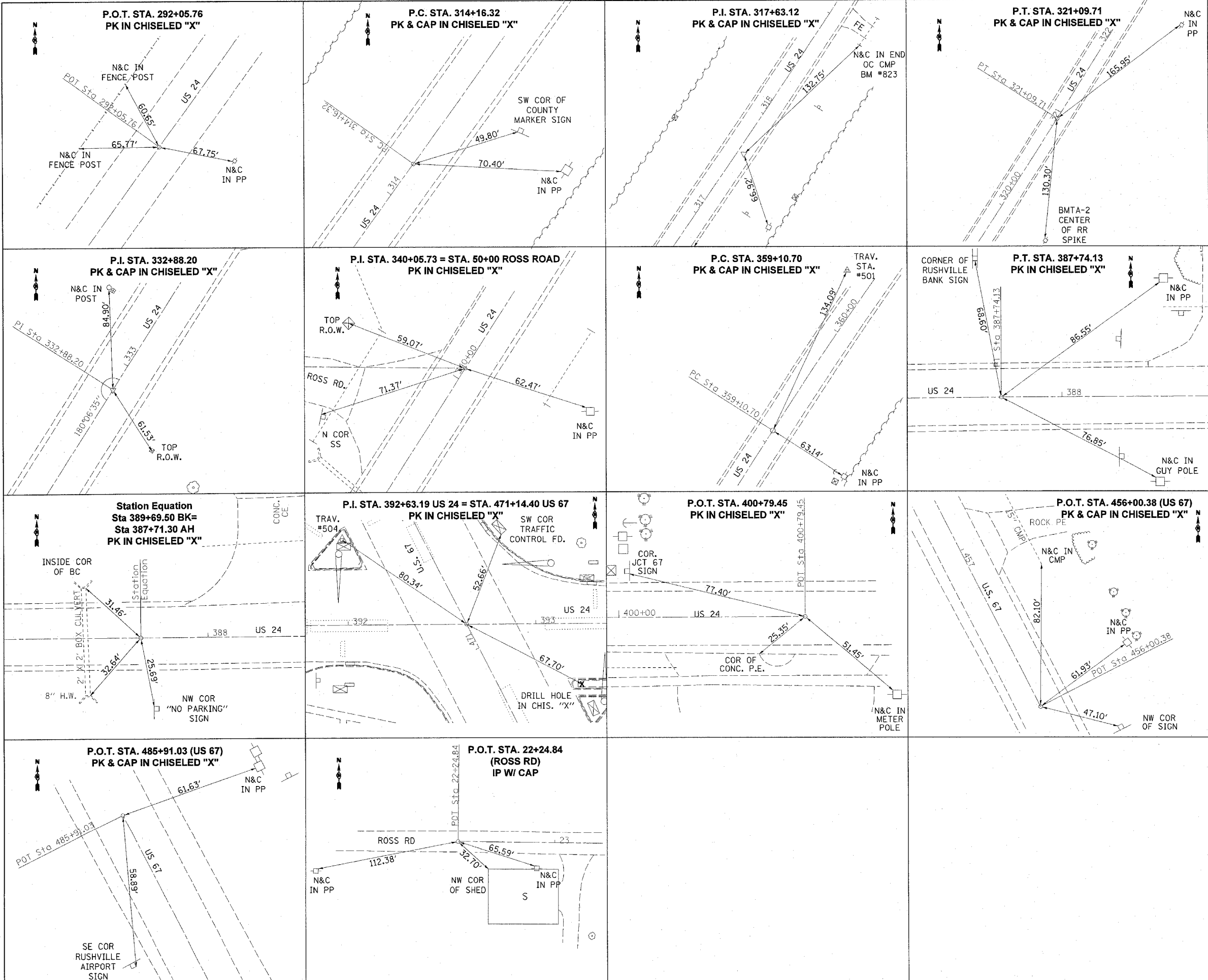


F.A.P. RTE.	SECTION	COUNTY	TOTAL SHEETS	SHEET NO.
310		SCHUYLER	46	16
STA.		TO STA.		
FED. ROAD DIST. NO.		ILLINOIS FED. AID PROJECT		

BENCH MARKS

- BM-821 SET 60d IN POWER POLE ON S SIDE OF ROSS RD. TR 950 N. 0.23 MI WEST OF US 24.
- BM 822 FOUND CHISELED SQUARE ON HEADWALL IN THE SW QUAD OF US 24 & ROSS RD (TR 950 N), 1.06 MI SW OF JCT US 24 / US 67. NAVD88 = 648.894
- BM 823 SET N & BC IN S END OF CMP UNDER PE ON EAST SIDE OF US 24, 1.43 MI FROM JCT US 24 / US 67, SW OF RUSHVILLE. NAVD88 = 647.397
- BM 824 SET CHISELED SQUARE IN OLD CONC FOUNDATION ON THE SE CORNER ON EAST SIDE OF US 24 IN FRONT OF OLD 2 STORY HOUSE, 1.17 MI SW OF JCT US 24 / US 67. NAVD88 = 658.325
- BM 825 SET CHISELED SQUARE IN HDWL N OF FE & WEST SIDE OF US 24, 1.85 MI SW FROM JCT US 24 / US 67. NAVD88 = 650.171
- BM 826 SET 60d IN POWERPOLE W/ GUY WIRE ON SOUTH SIDE OF US 24, 0.53 MI FROM JCT US 24 / US 67. NAVD88 = 662.273
- BM 827 FOUND CHISELED SQUARE ON HEADWALL ON THE NORTH SIDE OF US 24, 0.36 MI SW OF JCT US 24 / US 67. NAVD88 = 659.182
- BM TA-2 SET RAILROAD SPIKE IN PP 1.41 MI SW ALONG US 24 FROM JCT US 24 / US 67, EAST SIDE OF CENTERLINE. NAVD88 = 651.632
- BM TA-1 SET RAILROAD SPIKE IN PP 1.57 MI SW ALONG US 24 FROM JCT US 24 / US 67, SE SIDE OF CENTERLINE. NAVD88 = 648.597
- BM 98 FOUND 60d SPIKE NAIL IN PP 0.67 MI SW ALONG US 24 FROM JCT US 24 / US 67 IN RUSHVILLE, EAST SIDE OF CENTERLINE. NAVD88 = 662.070
- BM TB-4 SET CHISELED "+" IN N BOLT OF FIRE HYDRANT 0.18 MI WEST ALONG US 24 FROM JCT US 24 / US 67, SE QUAD INT OLD HIGHWAY 24 SPUR. NAVD88 = 665.382
- BM 100 FOUND CHISELED "+" IN N BOLT OF FIRE HYDRANT IN THE SW CORNER OF LOT AT SHELL GAS STATION, 0.07 MI SW ALONG US 24 FROM JCT US 24 / US 67. NAVD88 = 665.637
- BM 125 FOUND 60d SPIKE NAIL IN PP, 0.17 MI S ALONG US 67 FROM JCT US 24 / US 67, WEST SIDE OF CENTERLINE. NAVD88 = 661.387
- BM TA-3 SET 60d SPIKE NAIL IN PP, 0.29 MI S ALONG US 67 FROM JCT US 24 / US 67, EAST OF CENTERLINE. NAVD88 = 653.690
- BM 126 FOUND CHISELED "X" IN SW BOLT OF FIRE HYDRANT, 0.08 MI N ALONG US 67 FROM JCT US 24 / US 67. NAVD88 = 668.103
- BM TA-4 SET CHISELED SQUARE IN S END OF EAST CONC HDWL OF CULVERT UNDER US 67, 0.24 MI N ALONG US 67 FROM JCT US 24 / US 67. NAVD88 = 661.154
- BM TA-5 SET CHISELED SQUARE IN N END OF W HDWL AT ELEVATED SW, 0.07 MI W OF US 67 / US 24, S SIDE OF US 24. NAVD88 = 661.822



REVISIONS	
NAME	DATE

ILLINOIS DEPARTMENT OF TRANSPORTATION

CROSS TIES BENCH MARKS

SCALE: VERT. N/A
HORIZ. DATE MARCH 2004

DRAWN BY RL
CHECKED BY VJM

PLOT DATE = 4/15/2005
 FILE NAME = c:\projects\72886\72886\16\16.dgn
 PLOT SCALE = 1/8" = 1'-0"