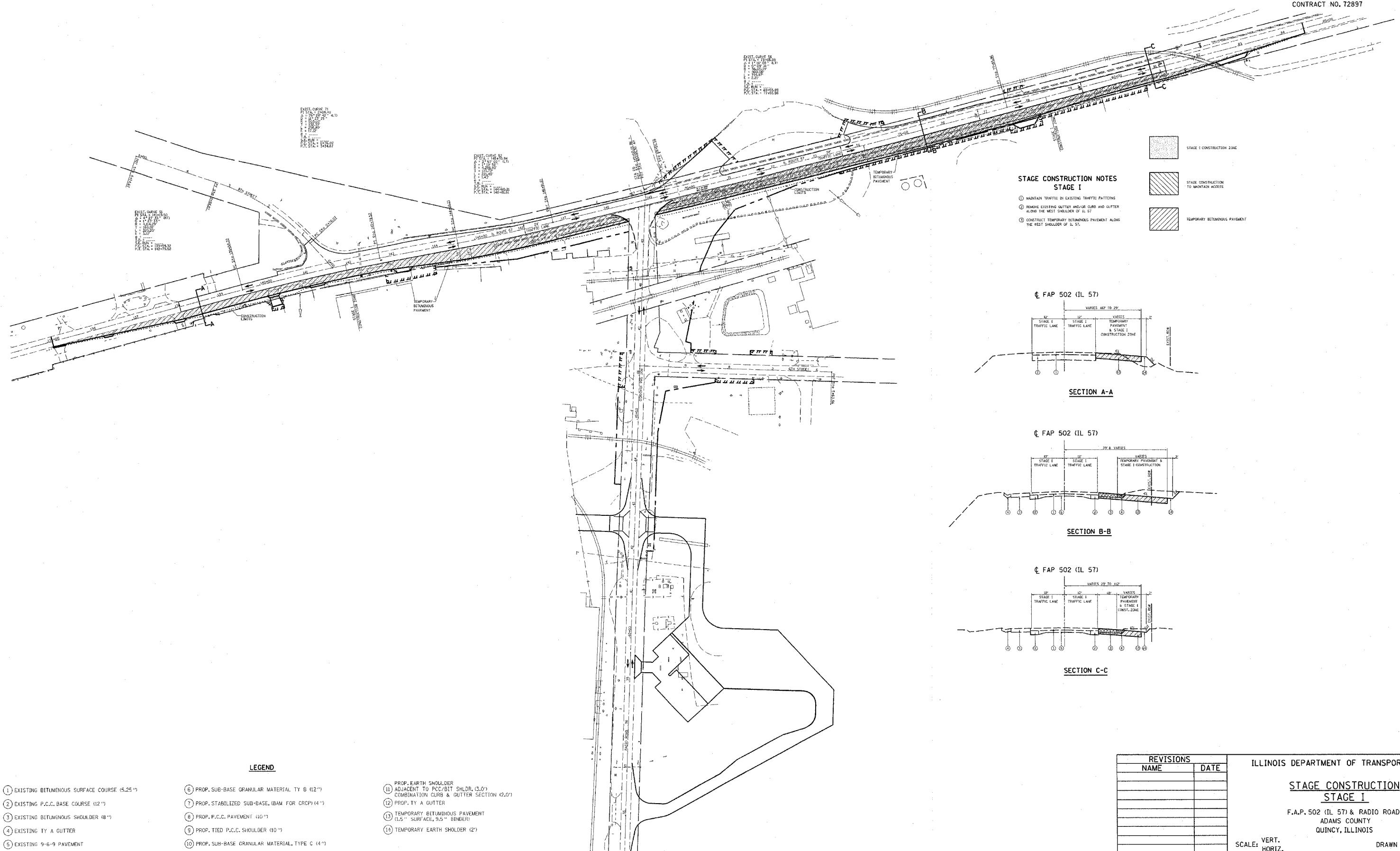
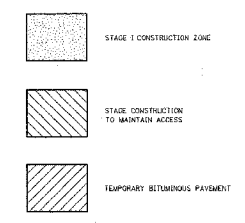


| | | | | |
|--|---------|----------|------------------|-----------|
| F.A.P. RTE. | SECTION | COUNTY | TOTAL SHEETS | SHEET NO. |
| 502 | * | ADAMS | 3/5 | 27 |
| STA. | | TO STA. | | |
| FED. ROAD DIST. NO. | | ILLINOIS | FED. AID PROJECT | |
| * [53RS-7, P(RS-2)] IN, TS CONTRACT NO. 72897 | | | | |

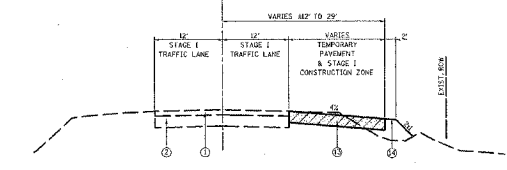


**STAGE CONSTRUCTION NOTES
STAGE I**

- ① MAINTAIN TRAFFIC IN EXISTING TRAFFIC PATTERNS
- ② REMOVE EXISTING GUTTER AND/OR CURB AND GUTTER ALONG THE WEST SHOULDER OF IL 57
- ③ CONSTRUCT TEMPORARY BITUMINOUS PAVEMENT ALONG THE WEST SHOULDER OF IL 57

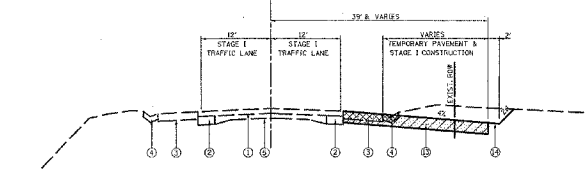


☐ FAP 502 (IL 57)



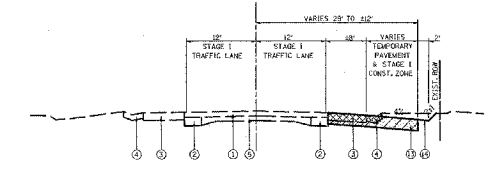
SECTION A-A

☐ FAP 502 (IL 57)



SECTION B-B

☐ FAP 502 (IL 57)



SECTION C-C

LEGEND

- ① EXISTING BITUMINOUS SURFACE COURSE (5.25")
- ② EXISTING P.C.C. BASE COURSE (12")
- ③ EXISTING BITUMINOUS SHOULDER (8")
- ④ EXISTING TY A GUTTER
- ⑤ EXISTING 9-6-9 PAVEMENT
- ⑥ PROP. SUB-BASE GRANULAR MATERIAL TY B (12")
- ⑦ PROP. STABILIZED SUB-BASE, (BAM FOR CRCP) (4")
- ⑧ PROP. P.C.C. PAVEMENT (10")
- ⑨ PROP. TIED P.C.C. SHOULDER (10")
- ⑩ PROP. SUB-BASE GRANULAR MATERIAL, TYPE C (4")
- ⑪ PROP. EARTH SHOULDER ADJACENT TO PCC/BIT SHLDR. (3.0') COMBINATION CURB & GUTTER SECTION (2.0')
- ⑫ PROP. TY A GUTTER
- ⑬ TEMPORARY BITUMINOUS PAVEMENT (1.5" SURFACE, 9.5" BINDER)
- ⑭ TEMPORARY EARTH SHOULDER (2')

| REVISIONS | |
|-----------|------|
| NAME | DATE |
| | |
| | |
| | |
| | |
| | |
| | |
| | |
| | |
| | |
| | |

ILLINOIS DEPARTMENT OF TRANSPORTATION

**STAGE CONSTRUCTION
STAGE I**

F.A.P. 502 (IL 57) & RADIO ROAD
ADAMS COUNTY
QUINCY, ILLINOIS

SCALE: VERT. _____
HORIZ. _____

DATE _____ DRAWN BY _____
CHECKED BY _____

c:\projects\0653004\woolpert_080204\radio rd stage 1.dgn
 2/2/2005
 *REF:01