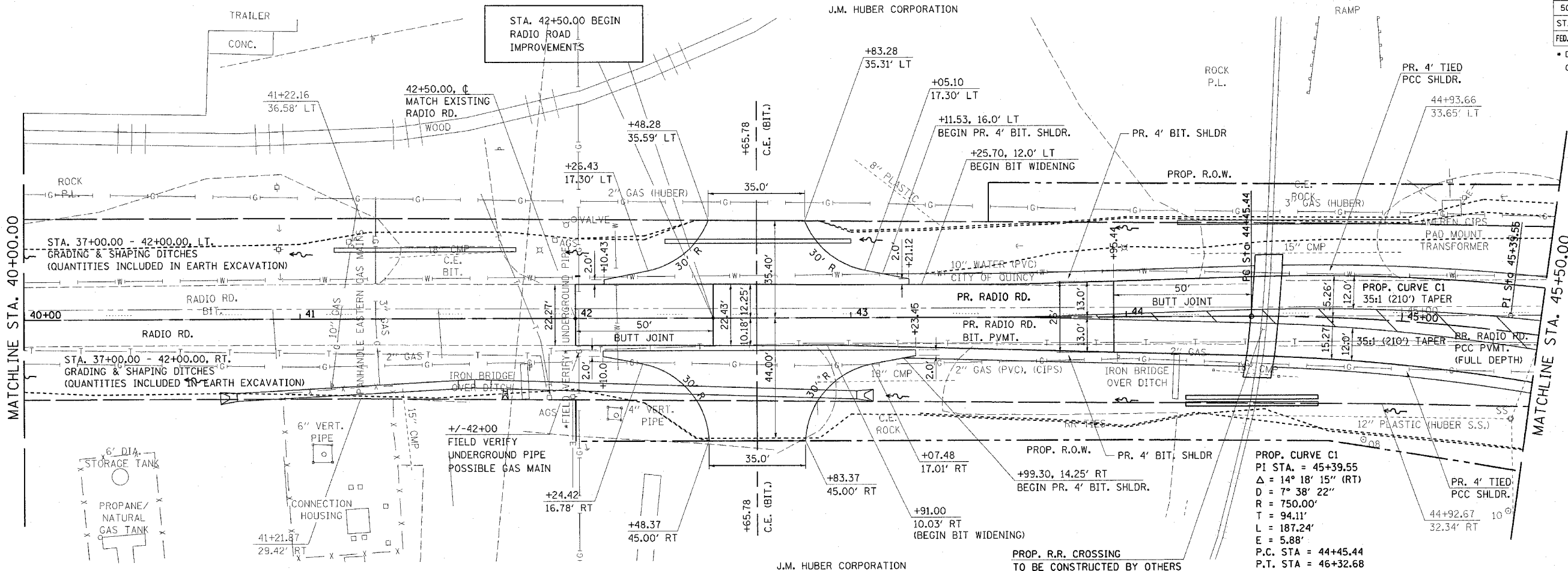
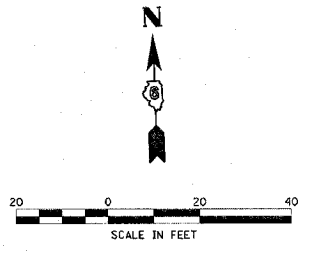


F.A.P. RTE.	SECTION	COUNTY	TOTAL SHEETS	SHEET NO.
502		ADAMS	3/5	39
STA.		TO STA.		
FED. ROAD DIST. NO.		ILLINOIS FED. AID PROJECT		
* (53RS-7, P(RS-2)JN, TS CONTRACT NO. 72897				

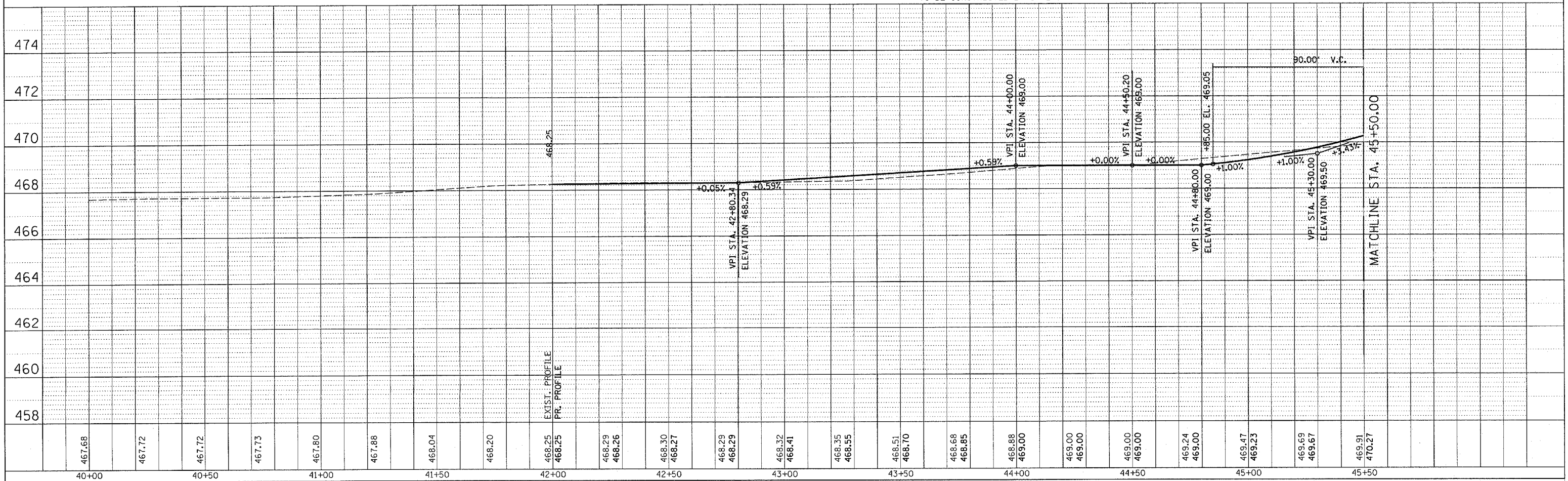


PROP. CURVE C1  
 PI STA. = 45+39.55  
 $\Delta = 14^\circ 18' 15''$  (RT)  
 $D = 7^\circ 38' 22''$   
 $R = 750.00'$   
 $T = 94.11'$   
 $L = 187.24'$   
 $E = 5.88'$   
 P.C. STA. = 44+45.44  
 P.T. STA. = 46+32.68

SEE DRAINAGE P&Ps FOR DRAINAGE INFORMATION

PLAN	SURVEYED	DATE
	BY	
	NOTED	
	BY	
	NO.	

PROFILE	SURVEYED	DATE
	BY	
	NOTED	
	BY	
	NO.	



\*CGN-SPEC\*  
 \*DATE-TIME\*  
 \*REF01