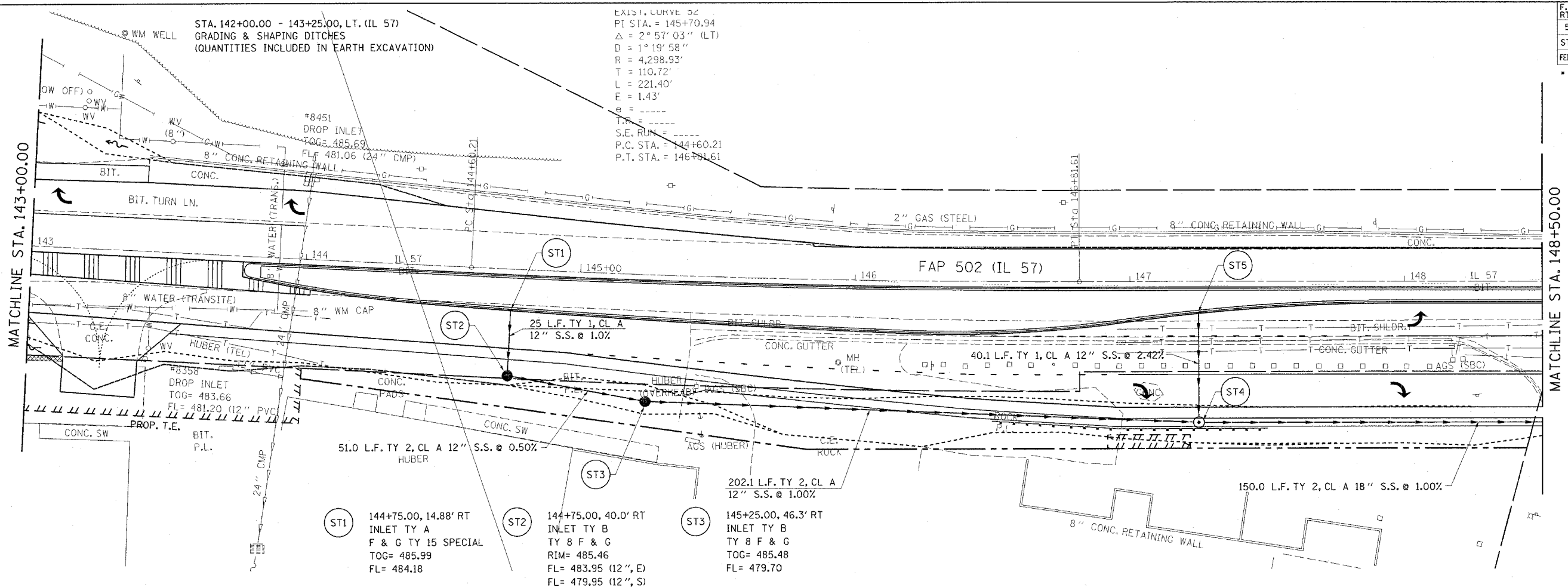


EXIST. CURVE 22  
 PI STA. = 145+70.94  
 $\Delta = 2^\circ 57' 03''$  (LT)  
 $D = 1^\circ 19' 58''$   
 $R = 4,298.93'$   
 $T = 110.72'$   
 $L = 221.40'$   
 $E = 1.43'$   
 $\epsilon =$   
 $T.P. =$   
 $S.E. RUN =$   
 $P.C. STA. = 144+60.21$   
 $P.T. STA. = 146+91.61$

STA. 142+00.00 - 143+25.00, LT. (IL 57)  
 GRADING & SHAPING DITCHES  
 (QUANTITIES INCLUDED IN EARTH EXCAVATION)



- ST5 147+25.00, 11.4' RT INLET TY A F & G TY 15 SPECIAL TOG= 483.70 FL= 481.75
- ST4 147+25.00, 51.50' RT MANHOLE TY A 4' DIA., TY 9 F & G RIM= 483.08 FL= 481.37 (E) FL= 477.68 (N,S)

- ST1 144+75.00, 14.88' RT INLET TY A F & G TY 15 SPECIAL TOG= 485.99 FL= 484.18
- ST2 144+75.00, 40.0' RT INLET TY B TY 8 F & G RIM= 485.46 FL= 483.95 (12", E) FL= 479.95 (12", S)
- ST3 145+25.00, 46.3' RT INLET TY B TY 8 F & G TOG= 485.48 FL= 479.70

DATE	BY	REVISION

DATE	BY	REVISION

c:\projects\653004\653004\4drng.dgn  
 2/3/2005  
 \*REF01

