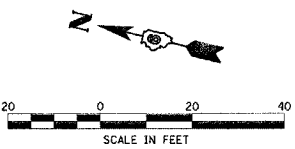
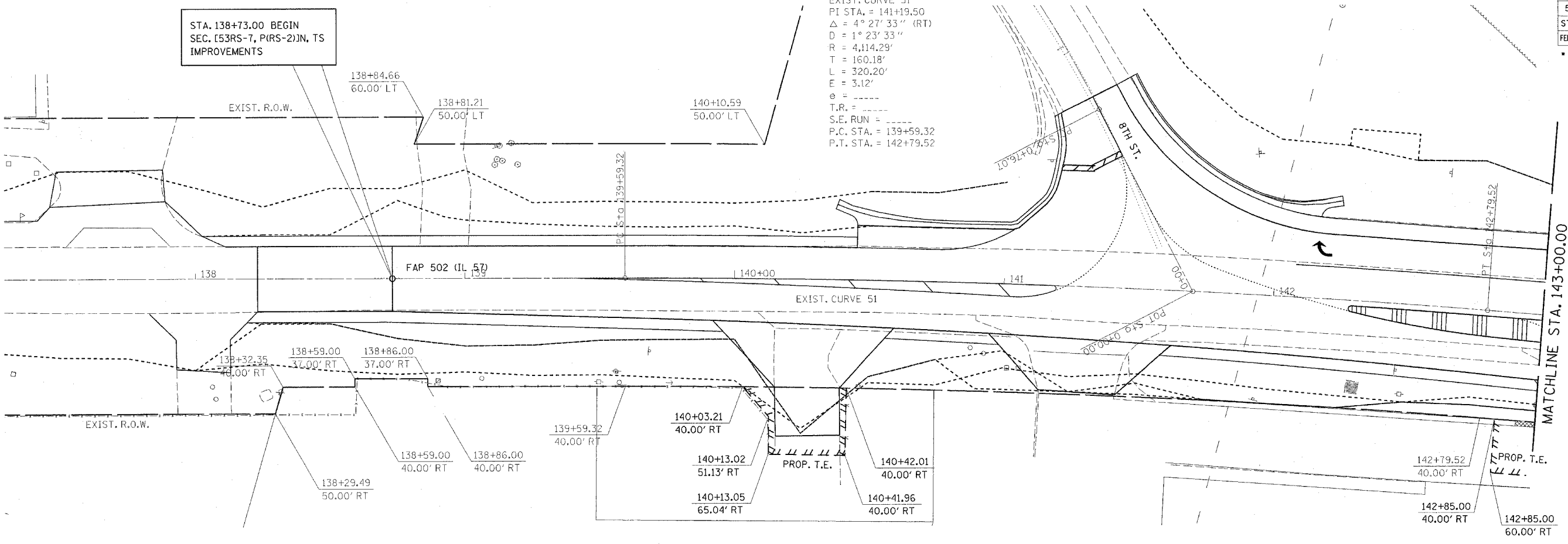
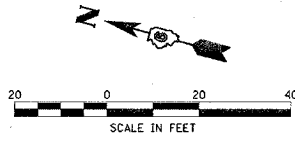
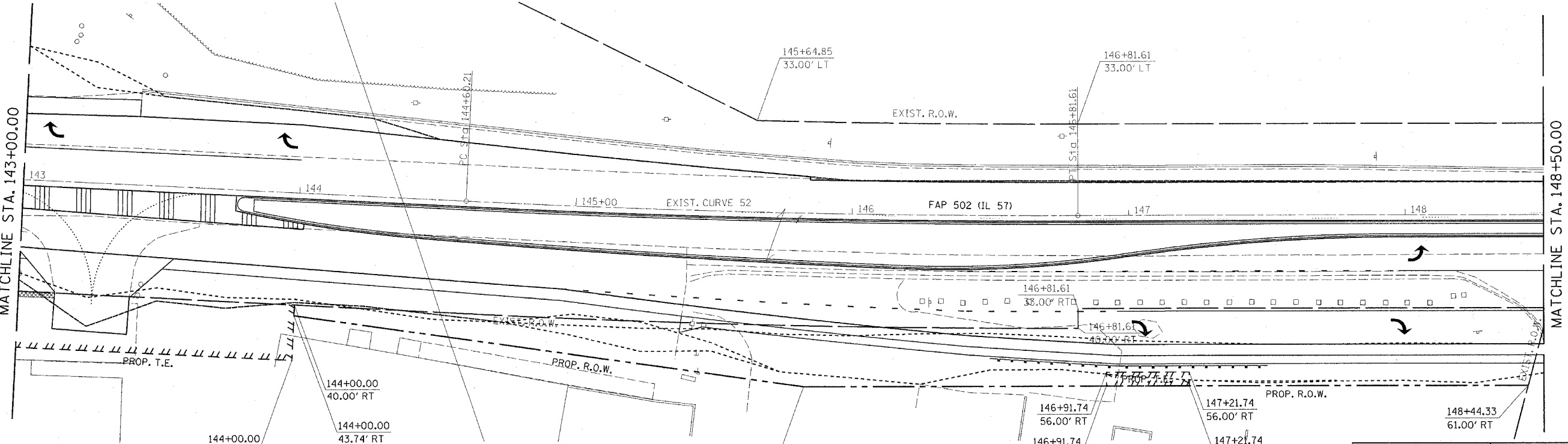


F.A.P. RTE.	SECTION	COUNTY	TOTAL SHEETS	SHEET NO.
502		ADAMS	3/5	53
STA.		TO STA.		
FED. ROAD DIST. NO.		ILLINOIS FED. AID PROJECT		
• (53RS-7, P(RS-2)JN, TS				
CONTRACT NO. 72897				

EXIST. CURVE 51  
 PI STA. = 141+19.50  
 $\Delta = 4^{\circ} 27' 33''$  (RT)  
 $D = 1^{\circ} 23' 33''$   
 $R = 4,114.29'$   
 $T = 160.18'$   
 $L = 320.20'$   
 $E = 3.12'$   
 $e =$   
 $T.R. =$   
 $S.E. RUN =$   
 $P.C. STA. = 139+59.32$   
 $P.T. STA. = 142+79.52$



EXIST. CURVE 52  
 PI STA. = 145+70.94  
 $\Delta = 2^{\circ} 57' 03''$  (LT)  
 $D = 1^{\circ} 19' 58''$   
 $R = 4,298.93'$   
 $T = 110.72'$   
 $L = 221.40'$   
 $E = 1.43'$   
 $e =$   
 $T.R. =$   
 $S.E. RUN =$   
 $P.C. STA. = 144+60.21$   
 $P.T. STA. = 146+81.61$



REVISIONS	
NAME	DATE

ILLINOIS DEPARTMENT OF TRANSPORTATION  
**RIGHT OF WAY DETAILS**  
 FAP 502 (IL 57) & RADIO ROAD  
 SEC. (53RS-7, P(RS-2)JN, TS  
 ADAMS COUNTY  
 QUINCY, IL.  
 SCALE: VERT. \_\_\_\_\_  
 HORIZ. \_\_\_\_\_  
 DATE 08-02-04  
 DRAWN BY TMJ  
 CHECKED BY MEB

c:\projects\d653004\prowf\sheets.dgn  
 2/3/2005  
 \*REF01