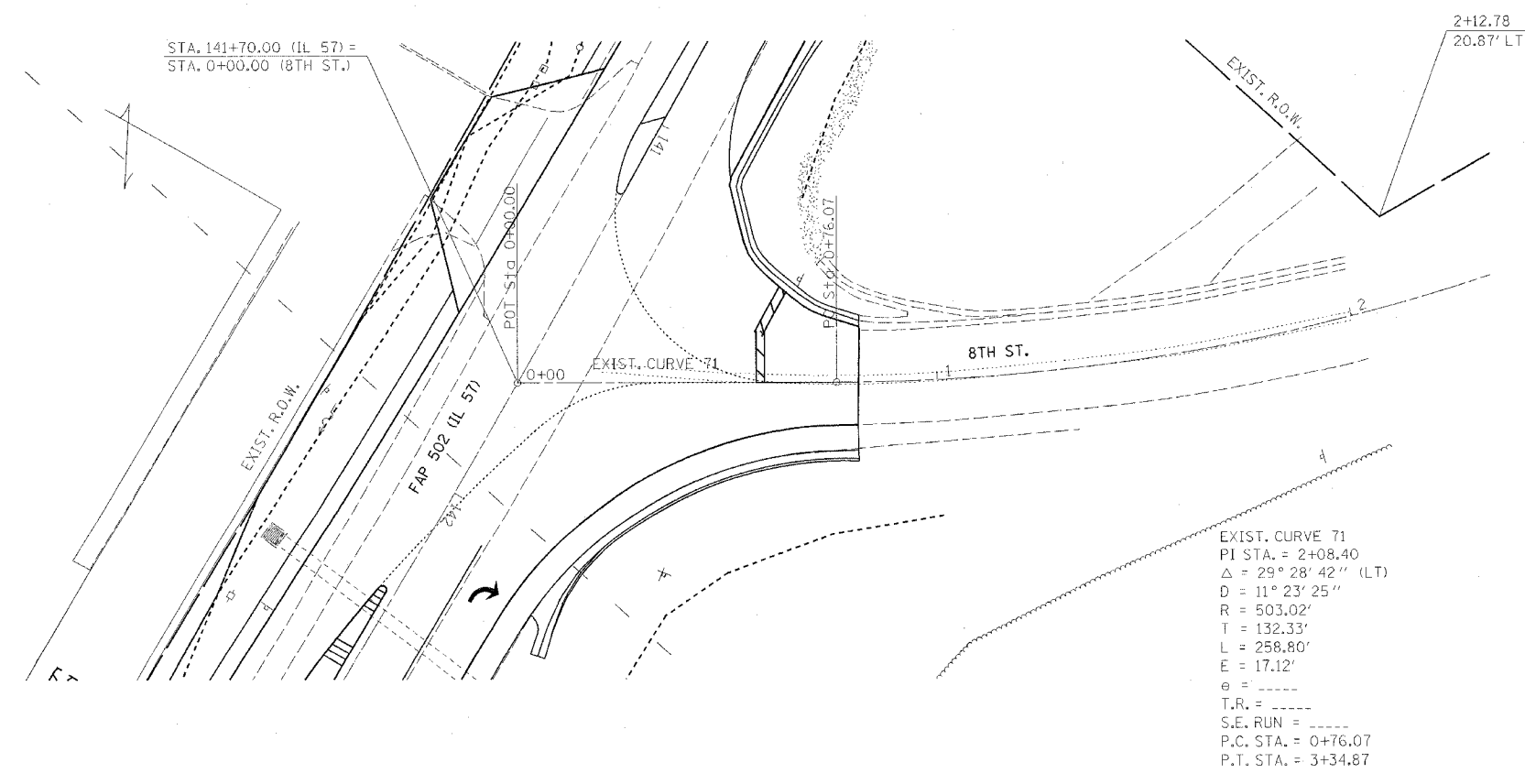
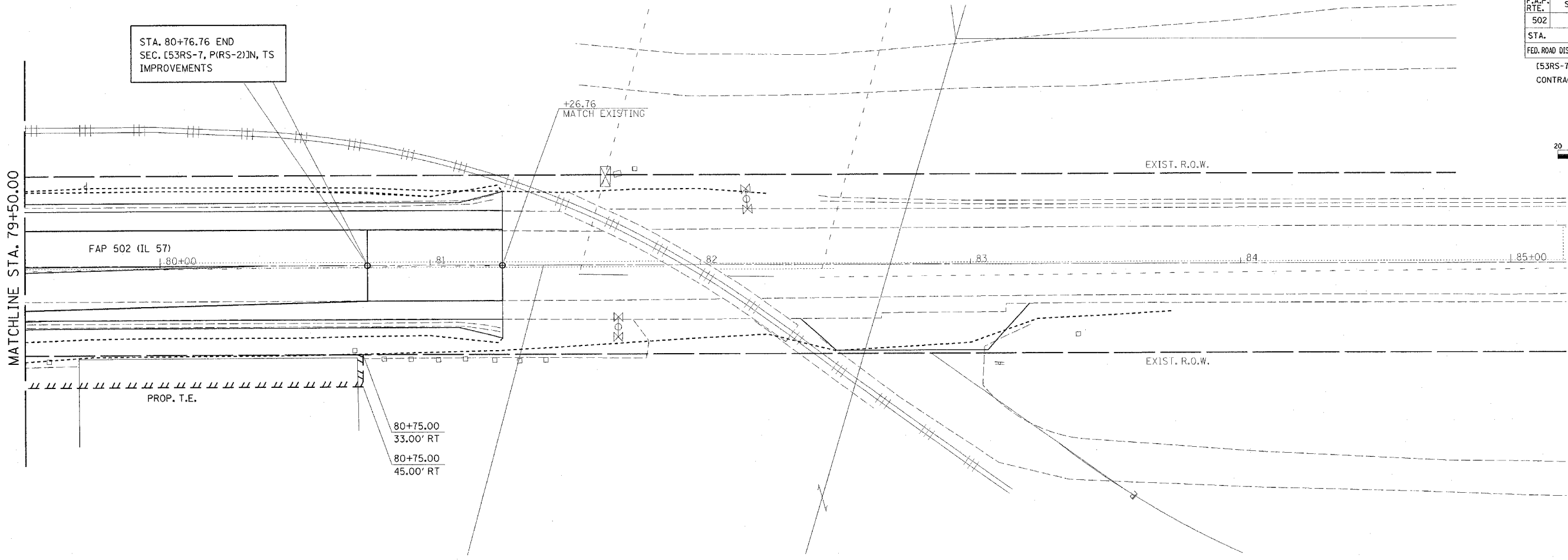
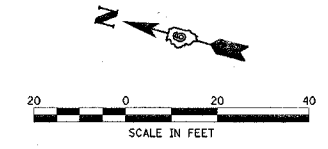


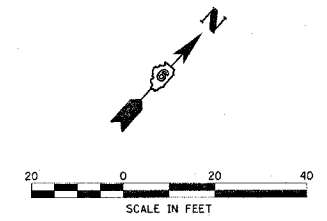
F.A.P. RTE.	SECTION	COUNTY	TOTAL SHEETS	SHEET NO.
502	.	ADAMS	315	55

STA. TO STA.
FED. ROAD DIST. NO. ILLINOIS FED. AID PROJECT

{53RS-7, P{RS-2}JN, TS
CONTRACT NO. 72897



EXIST. CURVE 71
 PI STA. = 2+08.40
 $\Delta = 29^\circ 28' 42''$ (LT)
 $D = 11^\circ 23' 25''$
 $R = 503.02'$
 $T = 132.33'$
 $L = 258.80'$
 $E = 17.12'$
 $e =$
 $T.R. =$
 $S.E. RUN =$
 $P.C. STA. = 0+76.07$
 $P.T. STA. = 3+34.87$



REVISIONS	
NAME	DATE

ILLINOIS DEPARTMENT OF TRANSPORTATION
RIGHT OF WAY DETAILS
 FAP 502 (IL 57) & RADIO ROAD
 SEC. {53RS-7, P{RS-2}JN, TS
 ADAMS COUNTY
 QUINCY, IL.

SCALE: VERT. _____
 HORIZ. _____
 DATE 08-02-04
 DRAWN BY TMJ
 CHECKED BY MEB

c:\projects\d653004\prowp_sheets.dgn
 2/3/2005
 *REF01