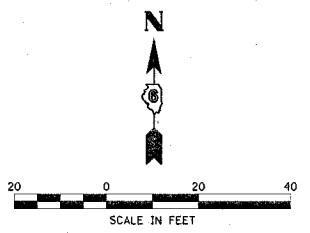
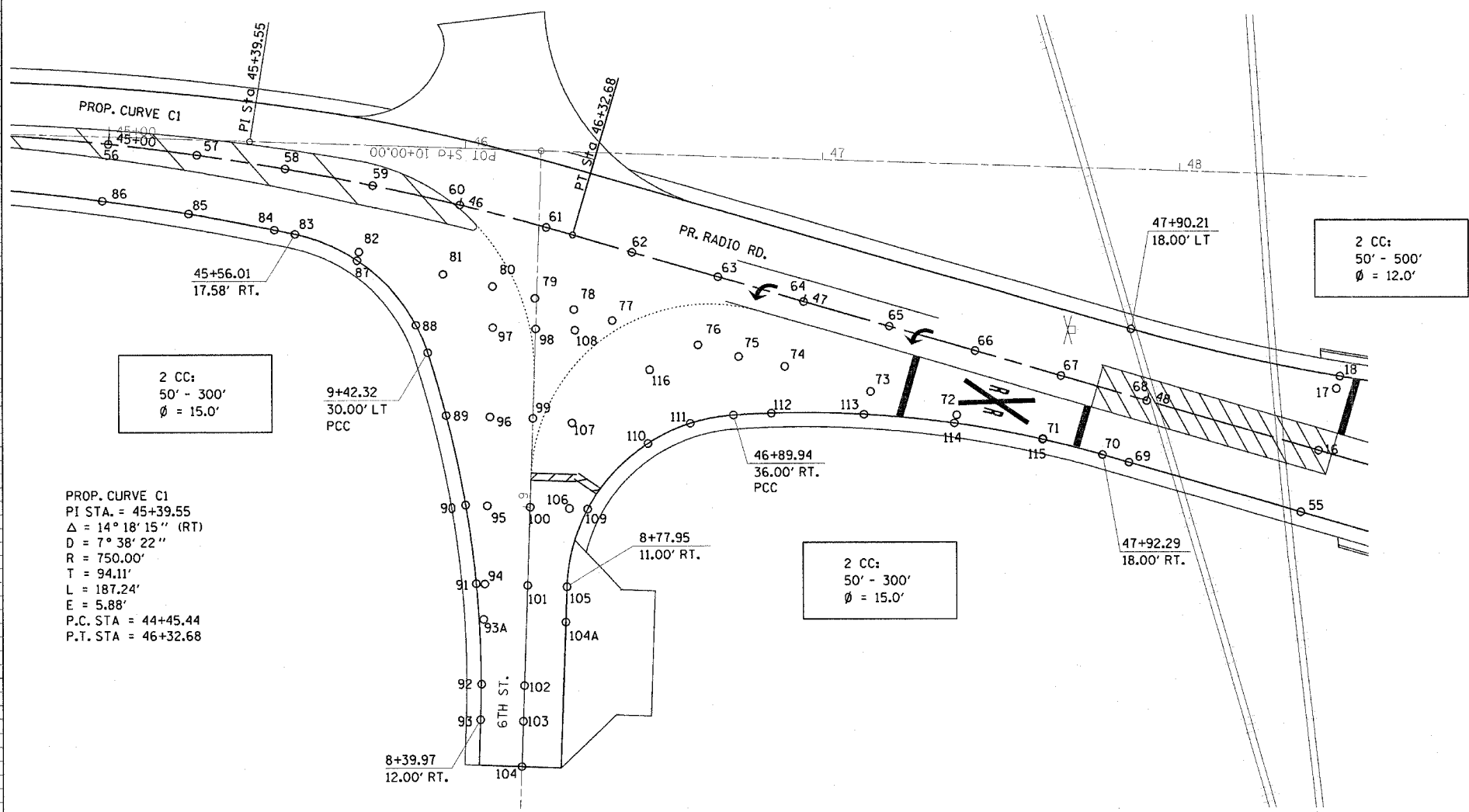


F.A.P. RTE.	SECTION	COUNTY	TOTAL SHEETS	SHEET NO.
502		ADAMS	315	60
STA.	TO STA.			
FED. ROAD DIST. NO.	ILLINOIS	FED. AID PROJECT		
• (53RS-7, PIRS-2)JN, TS				
CONTRACT NO. 72897				



RADIO RD. & 6th ST. INTERSECTION				
ALIGNMENT	POINT	STATION	OFFSET	ELEVATION
PR. RADIO RD.	56	45+00.00	CL	469.23
PR. RADIO RD.	57	45+25.00	CL	469.67
PR. RADIO RD.	58	45+50.00	CL	470.27
PR. RADIO RD.	59	45+75.00	CL	471.05
PR. RADIO RD.	60	46+00.00	CL	471.90
PR. RADIO RD.	61	46+25.00	CL	472.76
PR. RADIO RD.	62	46+50.00	CL	473.62
PR. RADIO RD.	63	46+75.00	CL	474.48
PR. RADIO RD.	64	47+00.00	CL	475.29
PR. RADIO RD.	65	47+25.00	CL	475.92
PR. RADIO RD.	66	47+50.00	CL	476.39
PR. RADIO RD.	67	47+75.00	CL	476.70
PR. RADIO RD.	68	48+00.00	CL	476.92
PR. RADIO RD.	69	48+00.00	18 RT.	476.65
PR. RADIO RD.	70	47+92.29	18 RT.	476.60
PR. RADIO RD.	71	47+75.00	18.3 RT.	476.42
PR. RADIO RD.	72	47+50.00	18.6 RT.	476.11
PR. RADIO RD.	73	47+25.00	19 RT.	475.64
PR. RADIO RD.	74	47+00.00	19.3 RT.	475.00
PR. RADIO RD.	75	46+86.82	20 RT.	474.58
PR. RADIO RD.	76	46+75.00	20 RT.	474.18
PR. RADIO RD.	77	46+50.00	20 RT.	473.32
PR. RADIO RD.	78	46+38.81	20 RT.	472.94
PR. RADIO RD.	79	46+27.33	20 RT.	472.54
PR. RADIO RD.	80	46+14.89	20 RT.	472.11
PR. RADIO RD.	81	46+00.00	20 RT.	471.60
PR. RADIO RD.	82	45+75.00	19 RT.	470.76
PR. RADIO RD.	83	45+56.01	17.58 RT.	470.19
PR. RADIO RD.	84	45+50.00	17.41 RT.	470.01
PR. RADIO RD.	85	45+25.00	16.70 RT.	469.42
PR. RADIO RD.	86	45+00.00	15.98 RT.	468.99
PR. RADIO RD.	87	45+75.00	21.46 RT.	470.72
PR. RADIO RD.	88	45+95.80	35.70 RT.	471.63
6th ST.	89	9+25.00	24.30 LT.	471.52
6th ST.	90	9+00.00	18.07 LT.	471.08
6th ST.	91	8+77.95	14.41 LT.	470.57
6th ST.	92	8+50.00	12 LT.	469.84
6th ST.	93	8+39.97	12 LT.	469.63
6th ST.	93A	8+68.00	12 LT.	470.32
6th ST.	94	8+77.95	12 LT.	470.61
6th ST.	95	9+00.00	12 LT.	471.20
6th ST.	96	9+25.00	12 LT.	471.77
6th ST.	97	9+50.00	12 LT.	472.24
6th ST.	98	9+50.00	CL	472.42
6th ST.	99	9+25.00	CL	471.95
6th ST.	100	9+00.00	CL	471.38
6th ST.	101	8+77.95	CL	470.79
6th ST.	102	8+50.00	CL	470.02
6th ST.	103	8+39.97	CL	469.81
6th ST.	104	8+27.56	CL	469.59
6th ST.	104A	8+68.00	11 RT.	470.34
6th ST.	105	8+77.95	11 RT.	470.64
6th ST.	106	9+00.00	11 RT.	471.22
6th ST.	107	9+24.03	11 RT.	472.06
6th ST.	108	9+50.00	11 RT.	472.64
6th ST.	109	9+00.00	16.13 RT.	471.12
6th ST.	110	9+18.97	32.41 RT.	471.62
6th ST.	111	9+25.00	44.09 RT.	472.59
PR. RADIO RD.	112	47+00.00	32.55 RT.	474.73
PR. RADIO RD.	113	47+25.00	25.64 RT.	475.51
PR. RADIO RD.	114	47+50.00	21 RT.	476.07
PR. RADIO RD.	115	47+75.00	18.50 RT.	476.42
PR. RADIO RD.	116	46+63.92	30.39 RT.	472.97



REVISIONS	
NAME	DATE

ILLINOIS DEPARTMENT OF TRANSPORTATION
INTERSECTION DETAILS
 FAP 502 (IL 57) & RADIO ROAD
 SEC. (53RS-7, PIRS-2)JN, TS
 ADAMS COUNTY
 QUINCY, IL.

SCALE: VERT. _____
 HORIZ. _____
 DATE 10-21-04

DRAWN BY TMJ
 CHECKED BY MEB

c:\projects\d653004\1157_rddint.dgn
 2/3/2005
 *REF 01