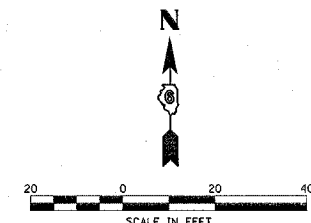
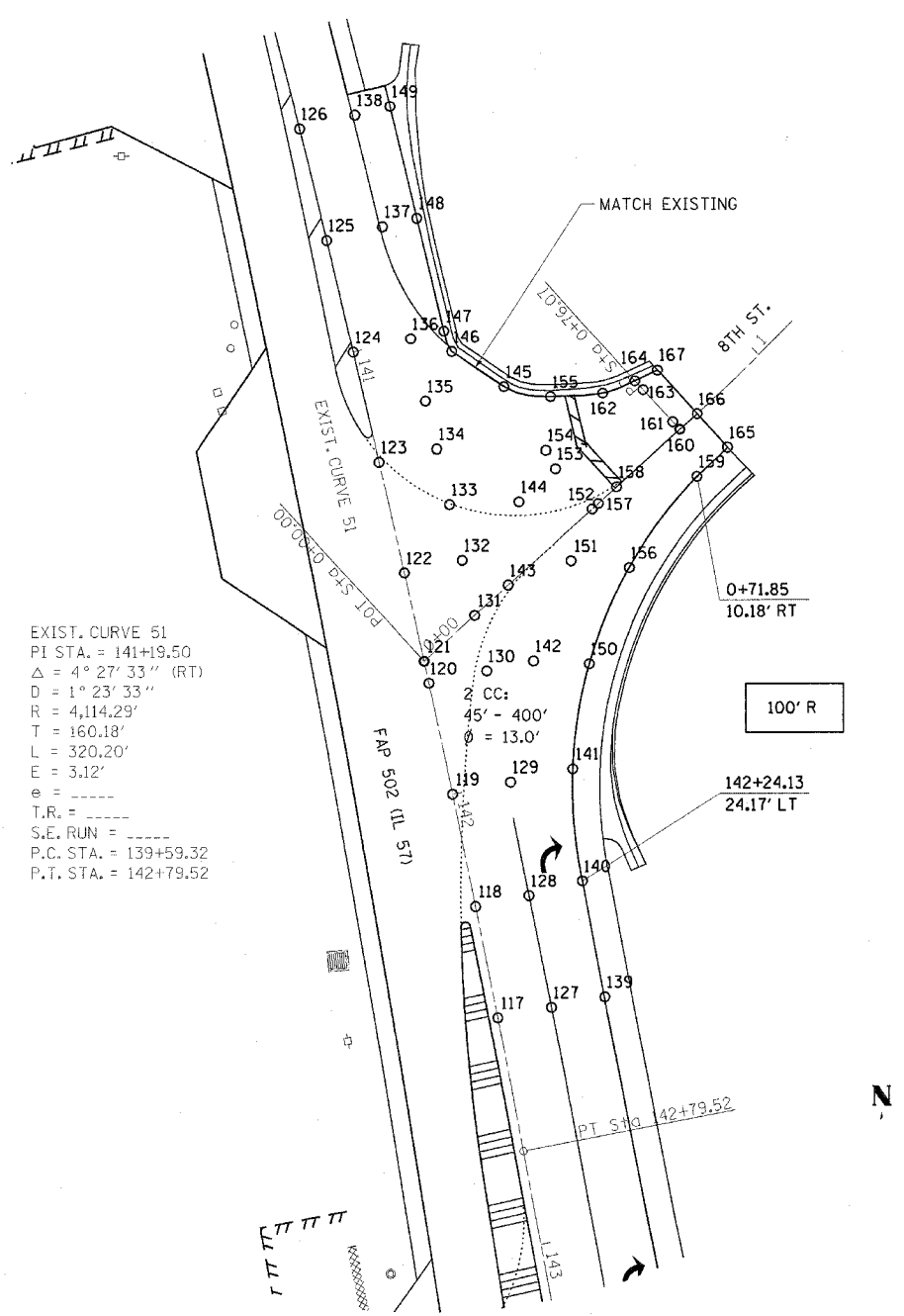


F.A.P. RTE.	SECTION	COUNTY	TOTAL SHEETS	SHEET NO.
502		ADAMS	315	61
STA.		TO STA.		
FED. ROAD DIST. NO.		ILLINOIS	FED. AID PROJECT	
* (53RS-7, PIRS-2)JN, TS				
CONTRACT NO. 7289Z				



FAP 502 (IL 57) & 8th ST. INTERSECTION				
ALIGNMENT	POINT	STATION	OFFSET	ELEVATION
IL 57	117	142+50	CL	486.34
IL 57	118	142+25	CL	486.28
IL 57	119	142+00	CL	486.21
IL 57	120	141+75	CL	486.18
IL 57	121	141+70 =	CL	486.17
8 TH ST.	121	0+00	CL	486.17
IL 57	122	141+50	CL	486.15
IL 57	123	141+25	CL	486.13
IL 57	124	141+00	CL	486.11
IL 57	125	140+75	CL	486.05
IL 57	126	140+50	CL	485.99
IL 57	127	142+50	12 LT.	486.52
IL 57	128	142+25	12 LT.	486.52
IL 57	129	142+00	13 LT.	486.47
IL 57	130	141+75	13 LT.	486.26
IL 57	131	141+62.52 =	13 LT.	486.23
8 TH ST.	131	0+15	CL	486.23
IL 57	132	141+50	13 LT.	486.24
IL 57	133	141+37.50	13 LT.	486.22
IL 57	134	141+25	13 LT.	486.20
IL 57	135	141+14.07	13 LT.	486.16
IL 57	136	141+00	13 LT.	486.12
IL 57	137	140+75	12.6 LT.	486.09
IL 57	138	140+50	12.5 LT.	486.10
IL 57	139	142+50	24 LT.	486.23
IL 57	140	142+25	24.2 LT.	486.21
IL 57	141	142+00	26.96 LT.	486.12
IL 57	142	141+75	23.51 LT.	486.26
8 TH ST.	143	0+25	CL	486.43
8 TH ST.	144	0+39.15	12 LT.	486.55
8 TH ST.	145	0+53.91	33.09 LT.	486.39
8 TH ST.	146	0+50.61 =	46.48 LT.	486.90
IL 57	146	141+04.77	21.11 LT.	486.90
IL 57	147	141+00	20.5 LT.	486.78
IL 57	148	140+75	20.4 LT.	485.51
IL 57	149	140+50	20.4 LT.	485.51
8 TH ST.	150	0+26.51	24.80 RT.	486.25
8 TH ST.	151	0+38.89	5.29 RT.	486.75
8 TH ST.	152	0+50	CL	487.13
8 TH ST.	153	0+50	12 LT.	486.93
8 TH ST.	154	0+51.16	16.41 LT.	486.92
8 TH ST.	155	0+60	24.58 LT.	486.90
8 TH ST.	156	0+47.32	15 RT.	487.07
8 TH ST.	157	0+51.83	CL	487.22
8 TH ST.	158	0+57.26	CL	487.48
8 TH ST.	159	0+71.85	10.18 RT.	488.53
8 TH ST.	160	0+76.07	CL	488.41
8 TH ST.	161	0+76.07	2.32 LT.	488.30
8 TH ST.	162	0+69	17.40 LT.	487.37
8 TH ST.	163	0+76.07	12 LT.	487.85
8 TH ST.	164	0+76.07	14.68 LT.	487.72
8 TH ST.	165	0+81.03	9.97 RT.	489.14
8 TH ST.	166	0+81.25	CL	488.69
8 TH ST.	167	0+81.46	13.08 LT.	488.03



EXIST. CURVE 51  
 PI STA. = 141+19.50  
 $\Delta = 4^\circ 27' 33''$  (RT)  
 $D = 1^\circ 23' 33''$   
 $R = 4,114.29'$   
 $T = 160.18'$   
 $L = 320.20'$   
 $E = 3.12'$   
 $e =$   
 T.R. =  
 S.E. RUN =  
 P.C. STA. = 139+59.32  
 P.T. STA. = 142+79.52

EXIST. CURVE 71  
 PI STA. = 2+08.40  
 $\Delta = 29^\circ 28' 42''$  (LT)  
 $D = 11^\circ 23' 25''$   
 $R = 503.02'$   
 $T = 132.33'$   
 $L = 258.80'$   
 $E = 17.12'$   
 P.C. STA. = 0+76.07  
 P.T. STA. = 3+34.87

REVISIONS	
NAME	DATE

ILLINOIS DEPARTMENT OF TRANSPORTATION  
**INTERSECTION DETAILS**  
 FAP 502 (IL 57) & RADIO ROAD  
 SEC. (53RS-7, PIRS-2)JN, TS  
 ADAMS COUNTY  
 QUINCY, IL.

SCALE: VERT.  
 HORIZ.  
 DATE 10-21-04

DRAWN BY TMJ  
 CHECKED BY MEB

ct:\projects\d653004\1157\_rdordint.dgn  
 2/3/2005  
 \*REF01