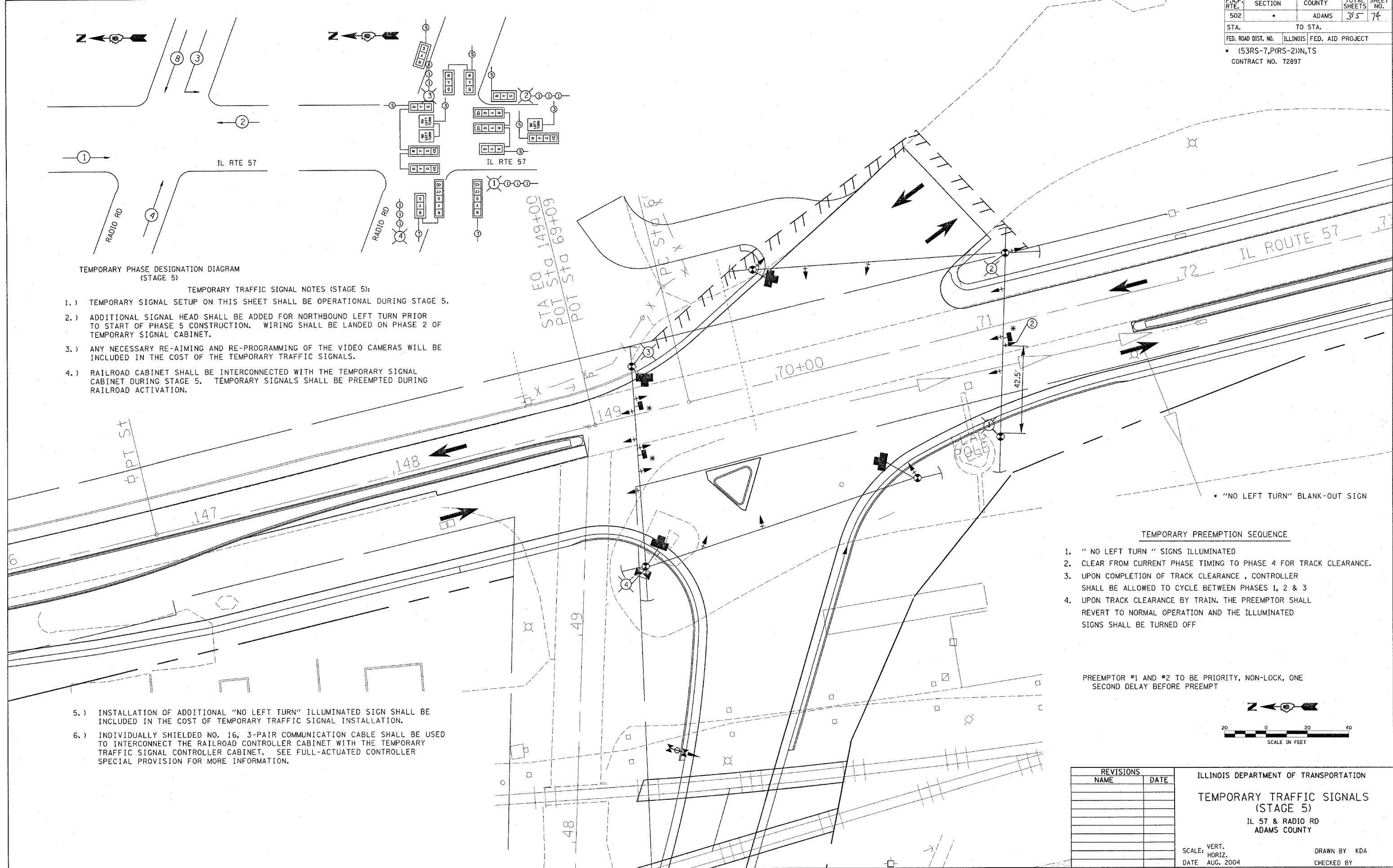


TEMPORARY PHASE DESIGNATION DIAGRAM (STAGE 5)

TEMPORARY TRAFFIC SIGNAL NOTES (STAGE 5):

- 1.) TEMPORARY SIGNAL SETUP ON THIS SHEET SHALL BE OPERATIONAL DURING STAGE 5.
- 2.) ADDITIONAL SIGNAL HEAD SHALL BE ADDED FOR NORTHBOUND LEFT TURN PRIOR TO START OF PHASE 5 CONSTRUCTION. WIRING SHALL BE LANDED ON PHASE 2 OF TEMPORARY SIGNAL CABINET.
- 3.) ANY NECESSARY RE-AIMING AND RE-PROGRAMMING OF THE VIDEO CAMERAS WILL BE INCLUDED IN THE COST OF THE TEMPORARY TRAFFIC SIGNALS.
- 4.) RAILROAD CABINET SHALL BE INTERCONNECTED WITH THE TEMPORARY SIGNAL CABINET DURING STAGE 5. TEMPORARY SIGNALS SHALL BE PREEMPTED DURING RAILROAD ACTIVATION.



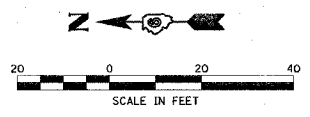
- 5.) INSTALLATION OF ADDITIONAL "NO LEFT TURN" ILLUMINATED SIGN SHALL BE INCLUDED IN THE COST OF TEMPORARY TRAFFIC SIGNAL INSTALLATION.
- 6.) INDIVIDUALLY SHIELDED NO. 16, 3-PAIR COMMUNICATION CABLE SHALL BE USED TO INTERCONNECT THE RAILROAD CONTROLLER CABINET WITH THE TEMPORARY TRAFFIC SIGNAL CONTROLLER CABINET. SEE FULL-ACTUATED CONTROLLER SPECIAL PROVISION FOR MORE INFORMATION.

* "NO LEFT TURN" BLANK-OUT SIGN

TEMPORARY PREEMPTION SEQUENCE

1. "NO LEFT TURN" SIGNS ILLUMINATED
2. CLEAR FROM CURRENT PHASE TIMING TO PHASE 4 FOR TRACK CLEARANCE.
3. UPON COMPLETION OF TRACK CLEARANCE, CONTROLLER SHALL BE ALLOWED TO CYCLE BETWEEN PHASES 1, 2 & 3
4. UPON TRACK CLEARANCE BY TRAIN, THE PREEMPTOR SHALL REVERT TO NORMAL OPERATION AND THE ILLUMINATED SIGNS SHALL BE TURNED OFF

PREEMPTOR #1 AND #2 TO BE PRIORITY, NON-LOCK, ONE SECOND DELAY BEFORE PREEMPT



| REVISIONS | |
|-----------|------|
| NAME | DATE |
| | |
| | |
| | |
| | |
| | |
| | |
| | |
| | |
| | |
| | |

ILLINOIS DEPARTMENT OF TRANSPORTATION
TEMPORARY TRAFFIC SIGNALS (STAGE 5)
 IL 57 & RADIO RD
 ADAMS COUNTY

SCALE: VERT. _____
 HORIZ. _____
 DATE AUG. 2004

DRAWN BY KDA
 CHECKED BY _____