

FAU RYE	SECTION	COUNTY	TOTAL SHEETS	SHEET NO.
8012		SANGAMON	13	1

• D-6 MISC TRAFFIC CONTROL 2006

STATE OF ILLINOIS  
DEPARTMENT OF TRANSPORTATION  
DIVISION OF HIGHWAYS

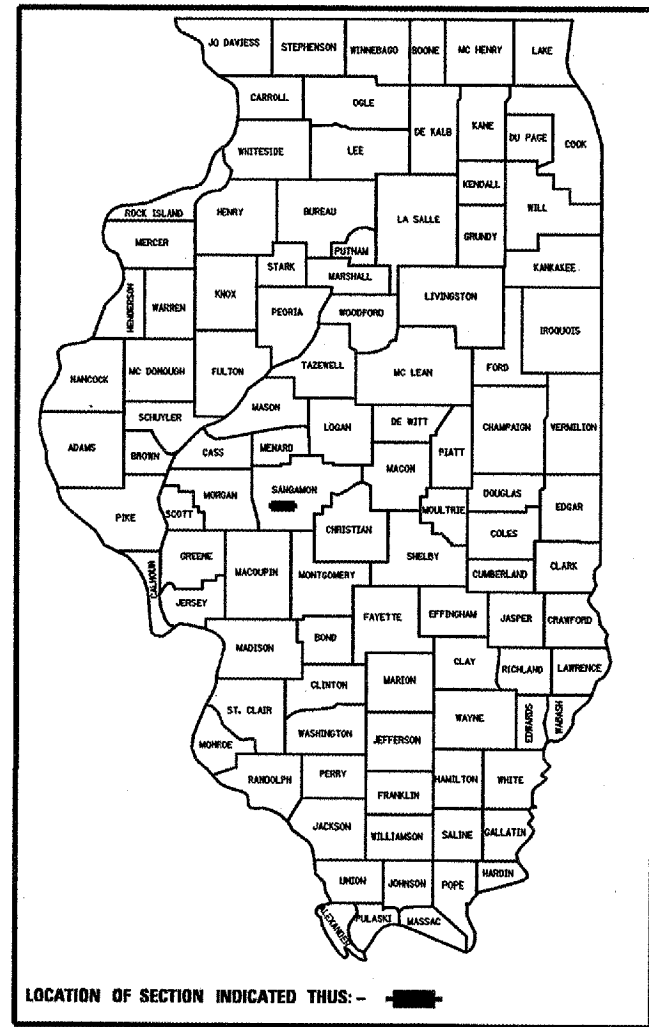
**PROPOSED  
HIGHWAY PLANS**

FAU ROUTE 8012 (WABASH AVE.)  
SECTION D-6 MISC TRAFFIC CONTROL 2006  
C-96-505-06  
SANGAMON COUNTY  
PROJECT: M-8012(011)

INDEX OF SHEETS

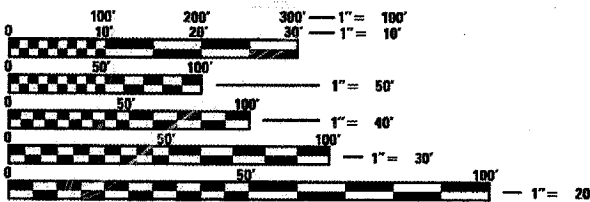
- 1. COVER SHEET
- 2. SUMMARY OF QUANTITIES
- 3.-12. PROPOSED INTERCONNECT DIAGRAM:  
WABASH AVE. AT ASH GROVE RD.  
WABASH AVE. AT ARCHER ELEVATOR RD.  
WABASH AVE. AT MERCANTILE DR.  
WABASH AVE. AT KOKE MILL RD.
- 13. TRAFFIC SIGNAL LEGEND

D96-504-05



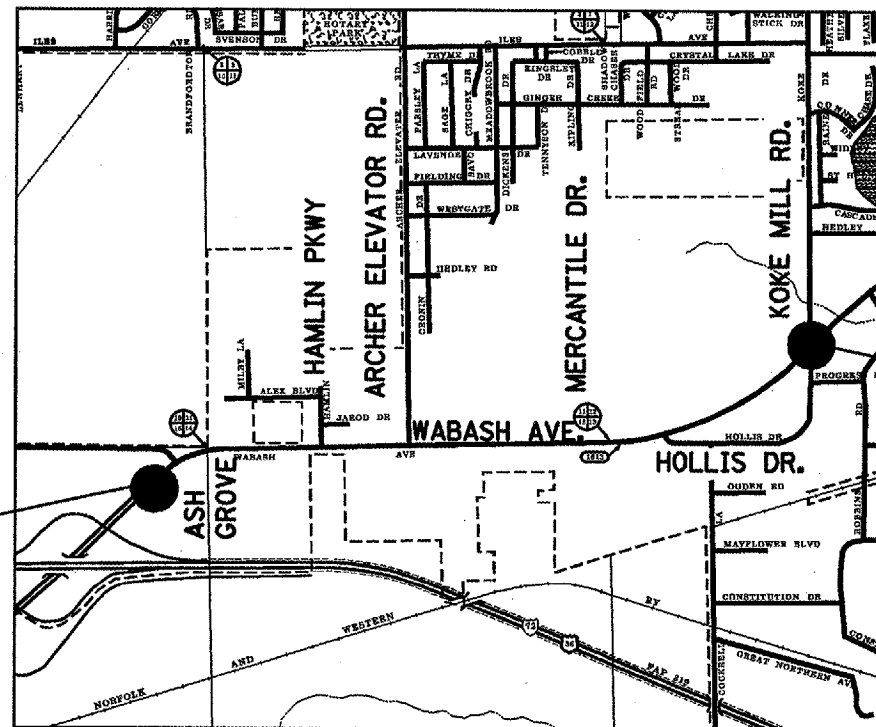
STANDARDS

- 000001-04 SYMBOLS, STANDARDS, & ABBREVIATIONS
- 701101-01 OFF ROAD OPERATIONS, MULTI-LANE LESS THAN 4.5 m (15.0') AWAY FOR SPEEDS > 45 MPH
- 701106-01 OFF ROAD OPERATIONS, MULTI-LANE MORE THAN 4.5 m (15.0') AWAY FOR SPEEDS > 45 MPH
- 702001-05 TRAFFIC CONTROL DEVICES
- 857001 STANDARD PHASE DESIGNATION DIAGRAMS AND PHASE SEQUENCES



FULL SIZE PLANS HAVE BEEN PREPARED USING STANDARD ENGINEERING SCALES. REDUCED SIZED PLANS WILL NOT CONFORM TO STANDARD SCALES. IN MAKING MEASUREMENTS ON REDUCED PLANS, THE ABOVE SCALES MAY BE USED.

J.U.L.I.E.  
JOINT UTILITY LOCATION INFORMATION FOR EXCAVATION  
1-800-892-0123



STA. 391+00.00 (WABASH AVE.)  
BEGIN PROJECT LIMIT

STA. 485+00.00 (WABASH AVE.)  
END PROJECT LIMIT

PROJECT LOCATION



STATE OF ILLINOIS  
DEPARTMENT OF TRANSPORTATION  
DIVISION OF HIGHWAYS

SUBMITTED May 17, 2005  
Chris M. Keen DISTRICT ENGINEER

May 13, 2005  
Mike Hene ENGINEER OF DESIGN AND ENVIRONMENT

May 13, 2005  
Victor Moders DIRECTOR, DIVISION OF HIGHWAYS

**PRINTED BY THE AUTHORITY  
OF THE STATE OF ILLINOIS**

SQUAD LEADER: MARCUS BRUCE (217) 785-5336

F.A.U. RTE.	SECTION	COUNTY	TOTAL SHEETS	SHEET NO.
8012	*	SANGAMON	13	2
STA.		TO STA.		
FED. ROAD DIST. NO.		ILLINOIS	FED. AID PROJECT	
* D-6 MISC TRAFFIC CONTROL 2006				

SUMMARY OF QUANTITIES				Y031-1F	
PAY CODE	PAY ITEM	UNITS	URBAN QUANTITY	80% Federal 10% State 10% City	80% Federal 13.33% State 6.67% City
81306100	JUNCTION BOX ( SPECIAL )	EACH	17	16	1
67100100	MOBILIZATION	L SUM	1	1	
81013000	CONDUIT IN TRENCH, 4" DIA., PVC	FOOT	32	32	
81012500	CONDUIT IN TRENCH, 1 1/2" DIA., PVC	FOOT	4398	4087	311
81012600	CONDUIT IN TRENCH, 2" DIA., PVC	FOOT	234	234	
81021540	CONDUIT, AUGERED, 1 1/2" DIA., PVC	FOOT	335	335	
81400300	DOUBLE HANDHOLE	EACH	2	2	
81500200	TRENCH AND BACKFILL FOR ELECTRICAL WORK	FOOT	4664	4353	311
87100110	FIBER OPTIC CABLE IN CONDUIT, NO. 62.5/125, 6F	FOOT	7005	6377	628
87900200	DRILL EXISTING HANDHOLE	EACH	1	1	

IDOT DISTRICT 6	
EXAMINED	Mar 15, 2005 <i>Sami J. Hawk</i> OPERATIONS ENGINEER
EXAMINED	Mar 14, 2005 <i>W.B. [Signature]</i> PROGRAM IMPLEMENTATION ENGINEER
EXAMINED	March 17, 2005 <i>William E. [Signature]</i> PROGRAM DEVELOPMENT ENGINEER

REVISIONS		ILLINOIS DEPARTMENT OF TRANSPORTATION SUMMARY OF QUANTITIES
NAME	DATE	
		SANGAMON COUNTY

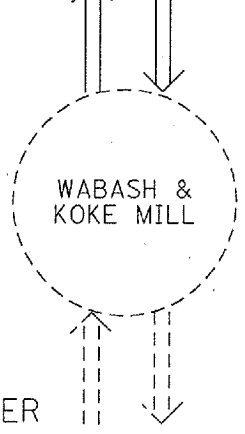
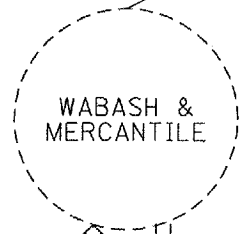
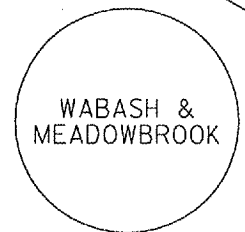
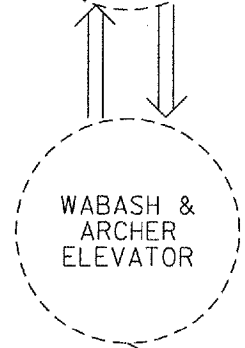
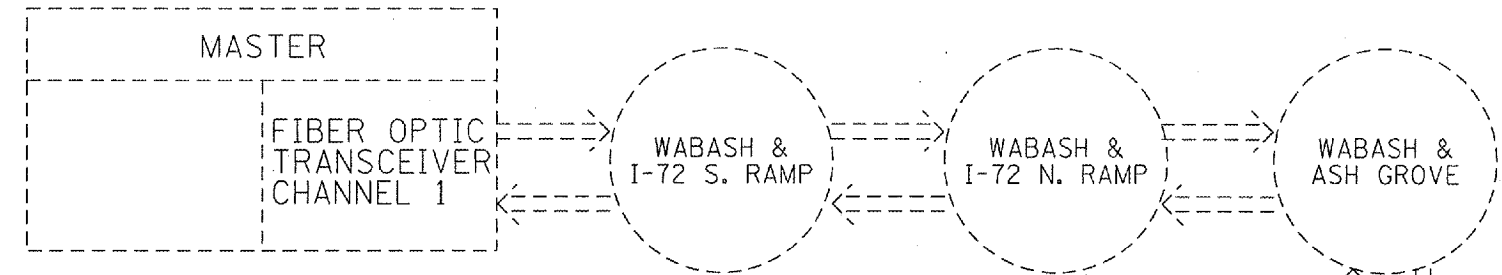
SCALE: VERT.      DRAWN BY TMJ  
 HORIZ.              CHECKED BY MEB  
 DATE 02-16-05

PLOT DATE = 3/14/2005  
 FILE NAME = c:\projects\0606480\shcover.dgn  
 PLOT SCALE = 43.375 / IN.  
 REFERENCE = WEP\*


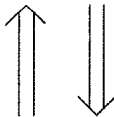
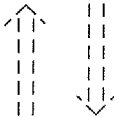
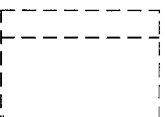
F.A.U. RTE.	SECTION	COUNTY	TOTAL SHEETS	SHEET NO.
8012	*	SANGAMON	13	3
STA.	TO STA.			
FED. ROAD DIST. NO.	ILLINOIS	FED. AID PROJECT		

\* D-6 MISC TRAFFIC CONTROL 2006

WABASH & I-72 SOUTH RAMP



LEGEND

-  EXISTING CONTROLLER CABINET
-  NEW FIBER OPTIC CABLE
-  EXISTING FIBER OPTIC CABLE
-  EXISTING MASTER CONTROLLER

FROM VETS/ILES MASTER

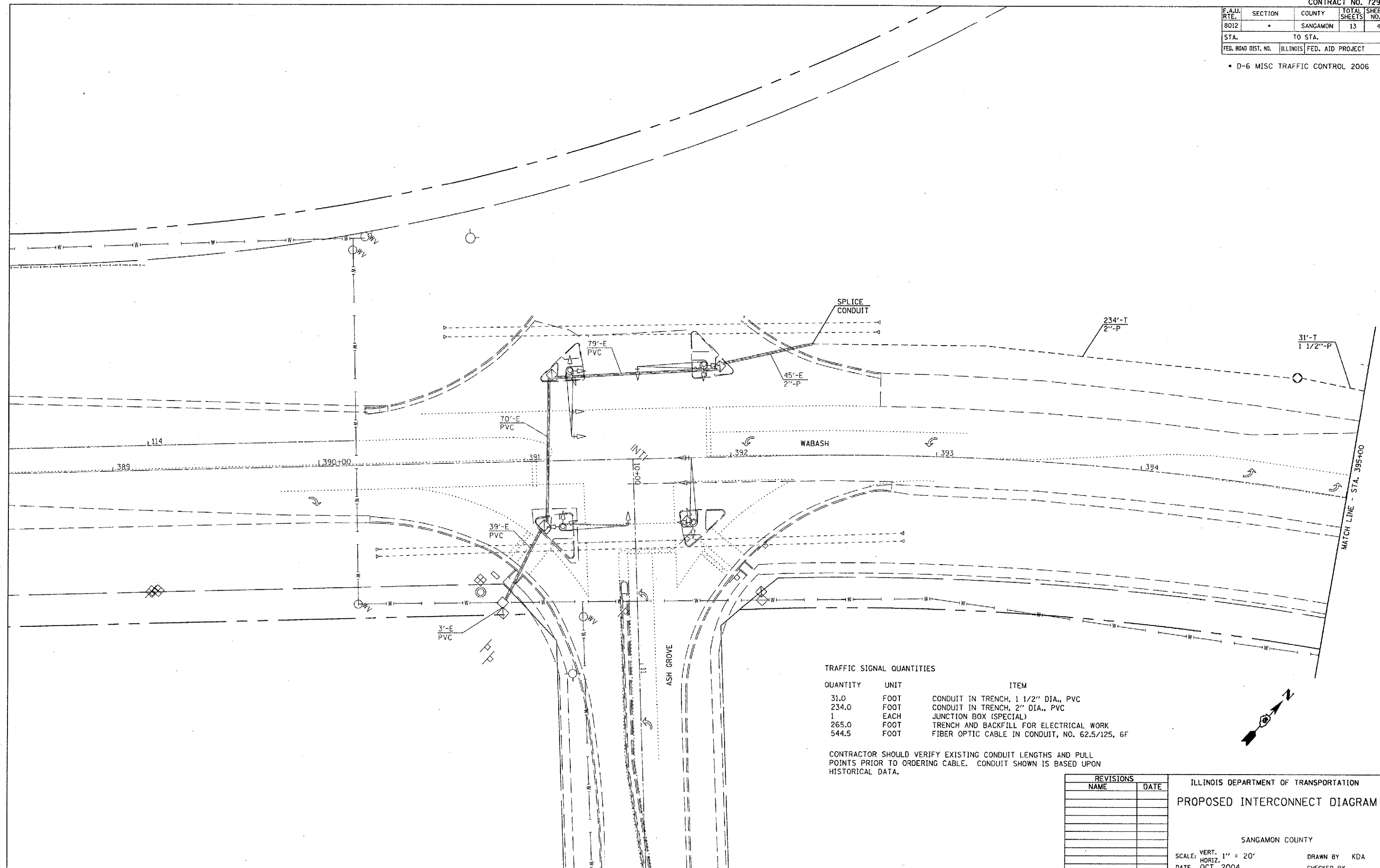
REVISIONS	
NAME	DATE

ILLINOIS DEPARTMENT OF TRANSPORTATION  
**SYSTEM SCHEMATICS**  
 SANGAMON COUNTY  
 SCALE: VERT.      DRAWN BY KDA  
 HORIZ.              CHECKED BY  
 DATE OCT. 2004

PLOT DATE = 2/16/2005  
 FILE NAME = C:\p\proj\3650405\3650405.dgn  
 PLOT SCALE = 43.3735 / 1 IN.  
 REFERENCE = #REF#

F.A.U. RTE.	SECTION	COUNTY	TOTAL SHEETS	SHEET NO.
8012		SANGAMON	13	4
STA.		TO STA.		
FED. ROAD DIST. NO.		ILLINOIS	FED. AID PROJECT	

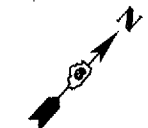
• D-6 MISC TRAFFIC CONTROL 2006



TRAFFIC SIGNAL QUANTITIES

QUANTITY	UNIT	ITEM
31.0	FOOT	CONDUIT IN TRENCH, 1 1/2" DIA., PVC
234.0	FOOT	CONDUIT IN TRENCH, 2" DIA., PVC
1	EACH	JUNCTION BOX (SPECIAL)
265.0	FOOT	TRENCH AND BACKFILL FOR ELECTRICAL WORK
544.5	FOOT	FIBER OPTIC CABLE IN CONDUIT, NO. 62.5/125, 6F

CONTRACTOR SHOULD VERIFY EXISTING CONDUIT LENGTHS AND PULL POINTS PRIOR TO ORDERING CABLE. CONDUIT SHOWN IS BASED UPON HISTORICAL DATA.



REVISIONS	
NAME	DATE

ILLINOIS DEPARTMENT OF TRANSPORTATION  
**PROPOSED INTERCONNECT DIAGRAM**

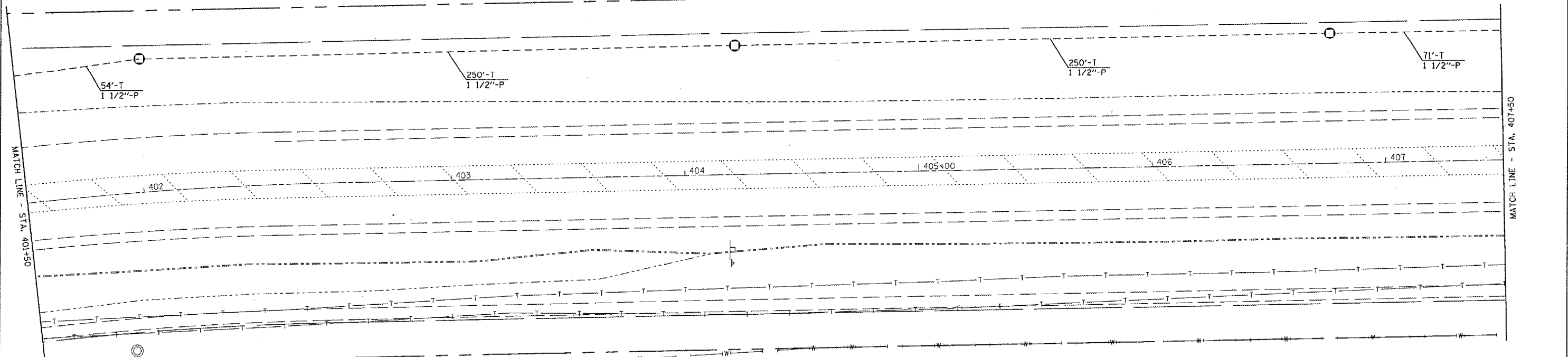
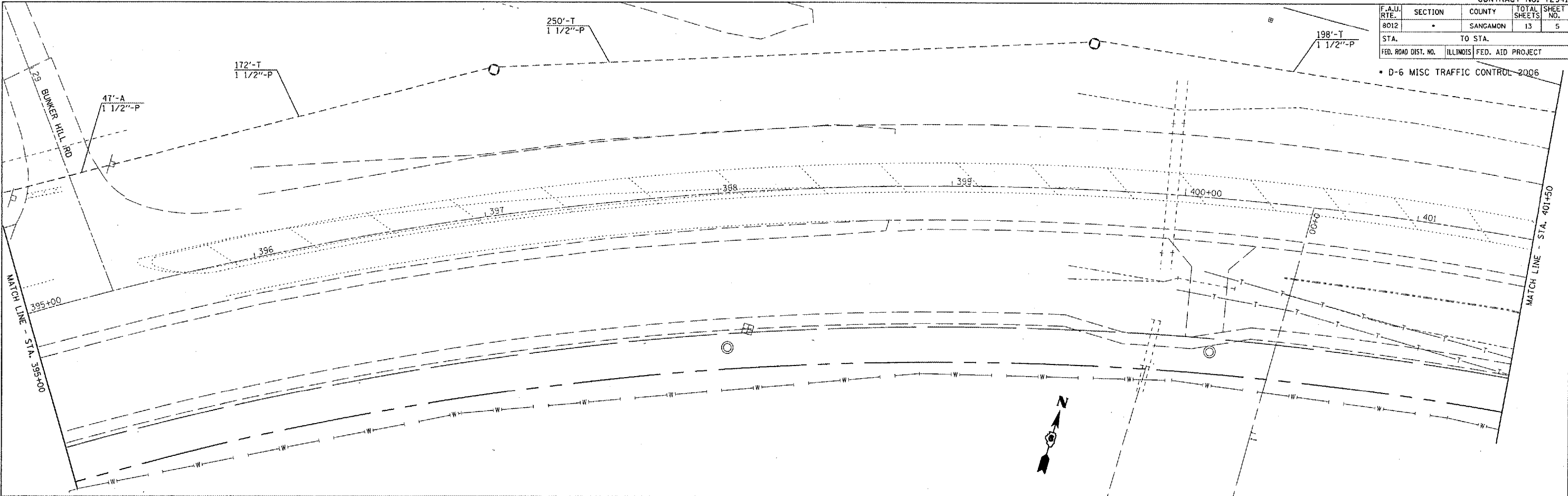
SANGAMON COUNTY

SCALE: VERT. 1" = 20'  
 HORIZ. 1" = 40'  
 DATE OCT. 2004  
 DRAWN BY KDA  
 CHECKED BY

PLOT DATE = 2/16/2005  
 FILE NAME = C:\Projects\855485\855485.dwg  
 PLOT SCALE = 43.2735 / IN.  
 REFERENCE = #REF#

F.A.U. RTE.	SECTION	COUNTY	TOTAL SHEETS	SHEET NO.
8012	-	SANGAMON	13	5
STA.		TO STA.		
FED. ROAD DIST. NO.		ILLINOIS FED. AID PROJECT		

• D-6 MISC TRAFFIC CONTROL 2006



TRAFFIC SIGNAL QUANTITIES

QUANTITY	UNIT	ITEM
1245.0	FOOT	CONDUIT IN TRENCH, 1 1/2" DIA., PVC
47.0	FOOT	CONDUIT, AUGERED, 1 1/2" DIA., PVC
5	EACH	JUNCTION BOX (SPECIAL)
1245.0	FOOT	TRENCH AND BACKFILL FOR ELECTRICAL WORK
1299.5	FOOT	FIBER OPTIC CABLE IN CONDUIT, NO. 62.5/125, 6F



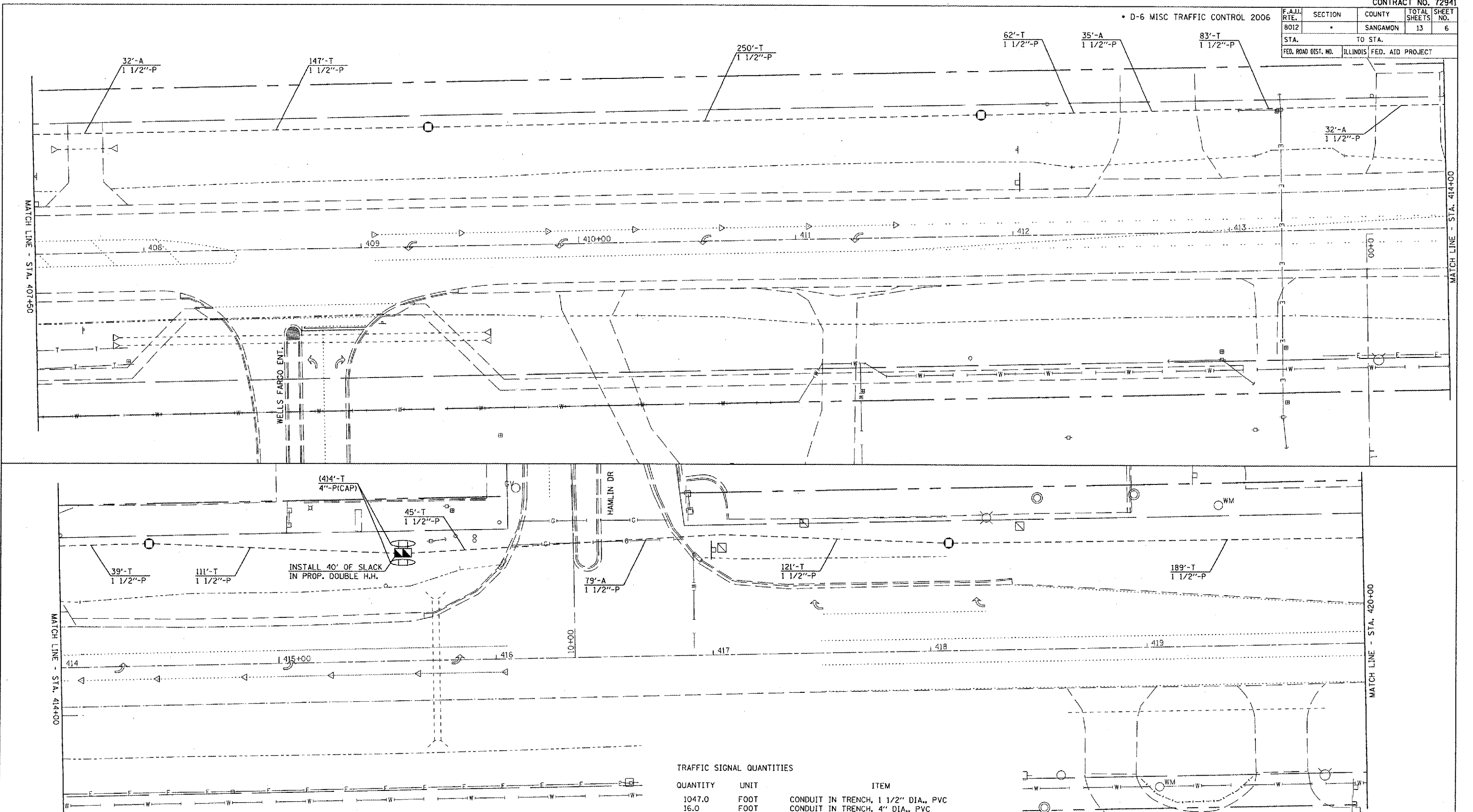
REVISIONS	
NAME	DATE

ILLINOIS DEPARTMENT OF TRANSPORTATION  
**PROPOSED INTERCONNECT DIAGRAM**  
 SANGAMON COUNTY  
 SCALE: VERT. 1" = 20'  
 HORIZ. 1" = 20'  
 DATE: OCT. 2004  
 DRAWN BY: KDA  
 CHECKED BY:

PLOT DATE = 2/16/2005  
 FILE NAME = C:\Projects\6528485\1\sheet5.dgn  
 PLOT SCALE = 43.375 / IN  
 REFERENCE = REF#

• D-6 MISC TRAFFIC CONTROL 2006

F.A.U. RTE.	SECTION	COUNTY	TOTAL SHEETS	SHEET NO.
8012		SANGAMON	13	6
STA.		TO STA.		
FED. ROAD DIST. NO.		ILLINOIS FED. AID PROJECT		



TRAFFIC SIGNAL QUANTITIES

QUANTITY	UNIT	ITEM
1047.0	FOOT	CONDUIT IN TRENCH, 1 1/2" DIA., PVC
16.0	FOOT	CONDUIT IN TRENCH, 4" DIA., PVC
178.0	FOOT	CONDUIT, AUGERED, 1 1/2" DIA., PVC
4	EACH	JUNCTION BOX (SPECIAL)
1	EACH	DOUBLE HANDHOLE
1063.0	FOOT	TRENCH AND BACKFILL FOR ELECTRICAL WORK
1271.0	FOOT	FIBER OPTIC CABLE IN CONDUIT, NO. 62.5/125, 6F



REVISIONS	
NAME	DATE

ILLINOIS DEPARTMENT OF TRANSPORTATION  
PROPOSED INTERCONNECT DIAGRAM

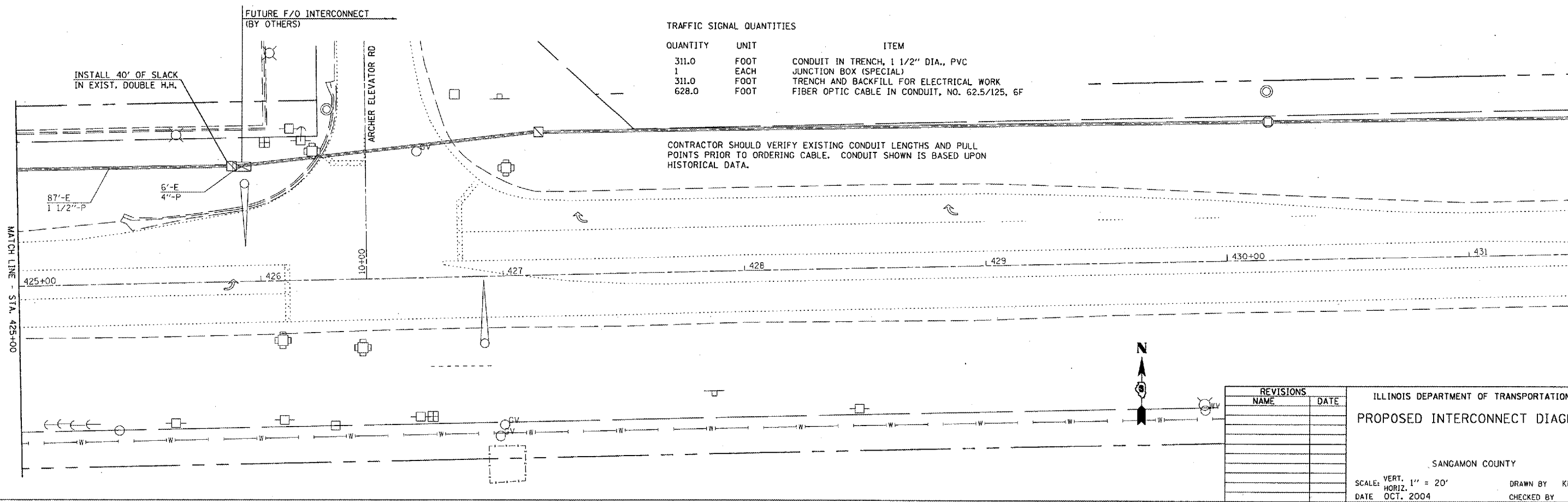
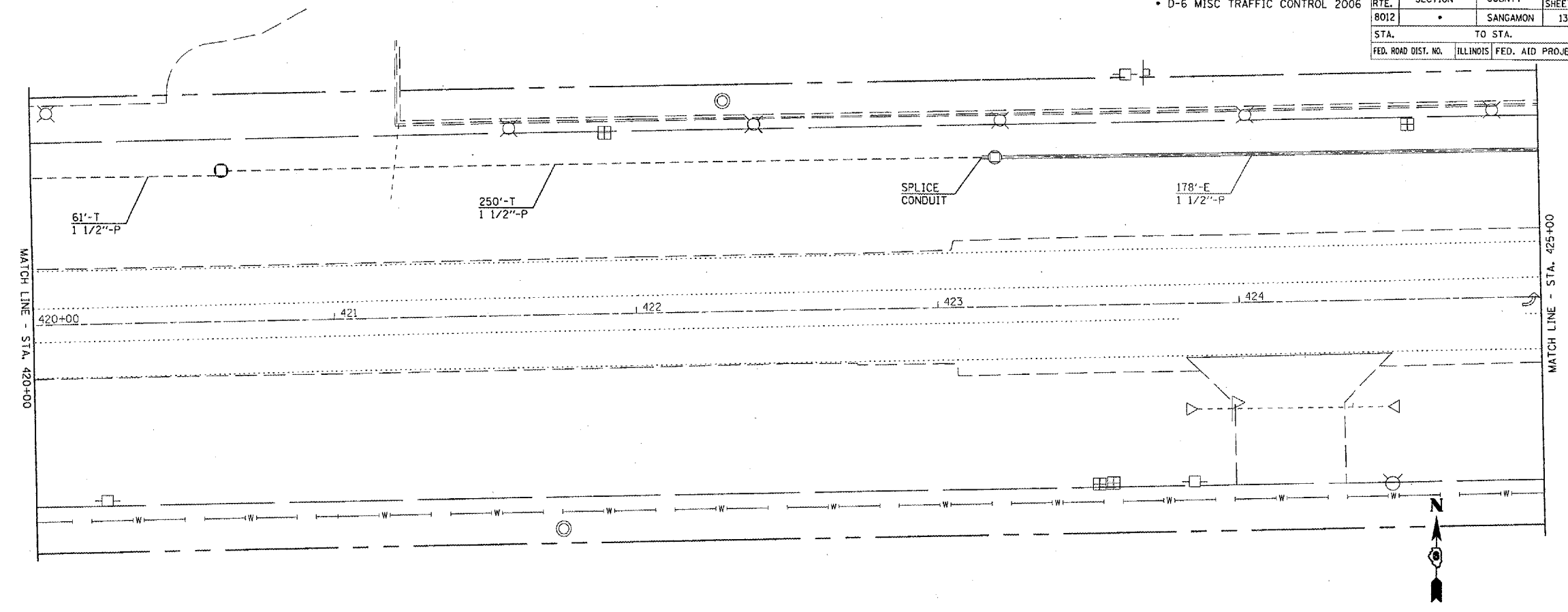
SANGAMON COUNTY  
SCALE: VERT. 1" = 20'  
HORIZ. DATE OCT. 2004  
DRAWN BY KDA  
CHECKED BY

PLT DATE = 2/16/2005  
FILE NAME = C:\P\proj\8012\8012.dgn  
PLT SCALE = 433755 / 1 IN.  
REFERENCE = WIER

• D-6 MISC TRAFFIC CONTROL 2006

CONTRACT NO. 72941

F.A.U. RTE.	SECTION	COUNTY	TOTAL SHEETS	SHEET NO.
8012		SANGAMON	13	7
STA.		TO STA.		
FED. ROAD DIST. NO.		ILLINOIS	FED. AID PROJECT	



TRAFFIC SIGNAL QUANTITIES

QUANTITY	UNIT	ITEM
311.0	FOOT	CONDUIT IN TRENCH, 1 1/2" DIA., PVC
1	EACH	JUNCTION BOX (SPECIAL)
311.0	FOOT	TRENCH AND BACKFILL FOR ELECTRICAL WORK
628.0	FOOT	FIBER OPTIC CABLE IN CONDUIT, NO. 62.5/125, 6F

CONTRACTOR SHOULD VERIFY EXISTING CONDUIT LENGTHS AND PULL POINTS PRIOR TO ORDERING CABLE. CONDUIT SHOWN IS BASED UPON HISTORICAL DATA.

REVISIONS	
NAME	DATE

ILLINOIS DEPARTMENT OF TRANSPORTATION  
**PROPOSED INTERCONNECT DIAGRAM**  
 SANGAMON COUNTY  
 SCALE: VERT. 1" = 20'  
 HORIZ. 1" = 20'  
 DATE OCT. 2004  
 DRAWN BY KDA  
 CHECKED BY

PLOT DATE = 2/16/2005  
 FILE NAME = CIV-000001\05081001\05081001.dgn  
 PLOT SCALE = 43.3735 / 1 IN.  
 REFERENCE = #REF#

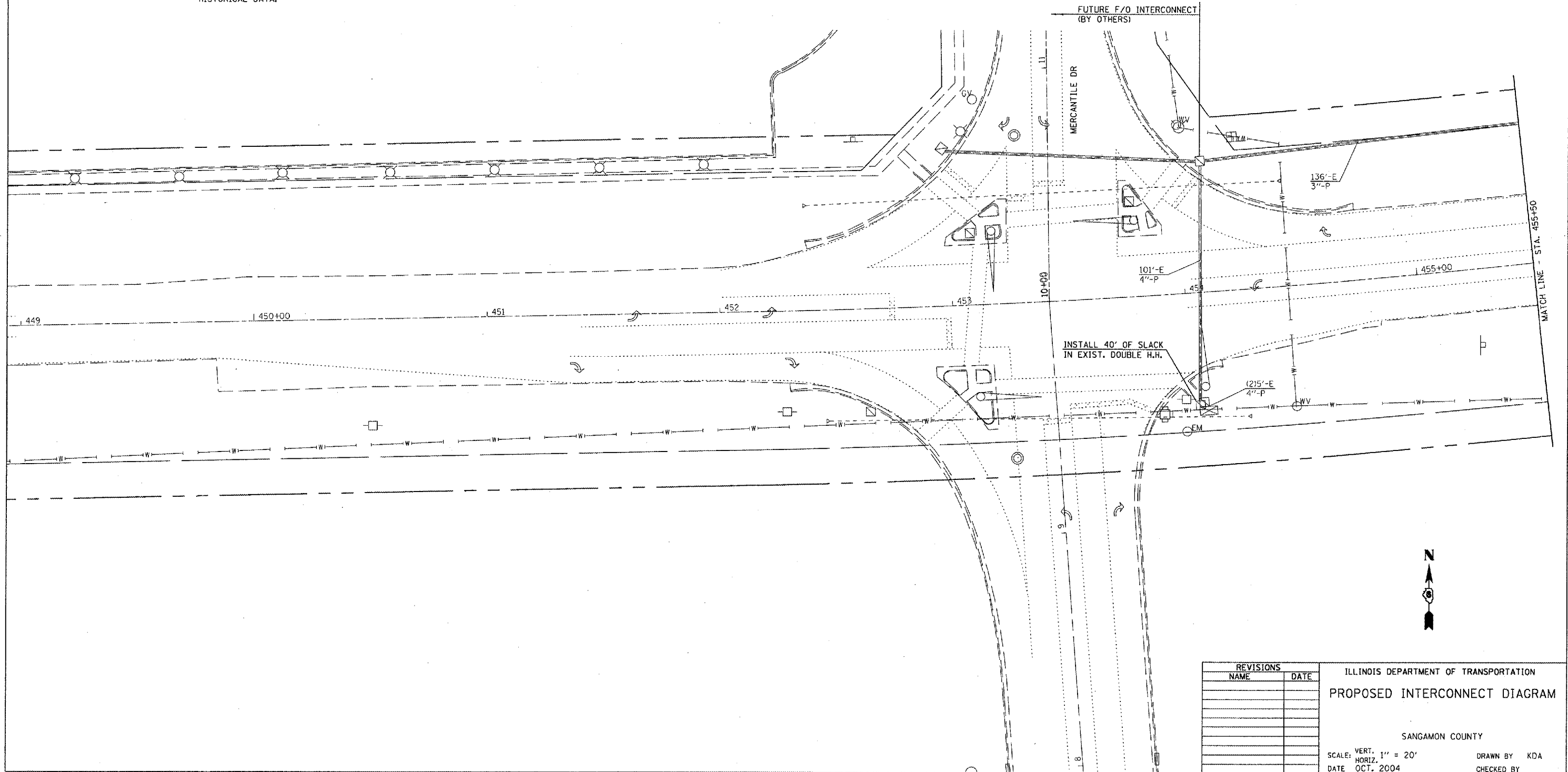
F.A.U. RTE.	SECTION	COUNTY	TOTAL SHEETS	SHEET NO.
8012		SANGAMON	13	8
STA.		TO STA.		
FED. ROAD DIST. NO.	ILLINOIS	FED. AID PROJECT		

D-6 MISC TRAFFIC CONTROL 2006

TRAFFIC SIGNAL QUANTITIES

QUANTITY	UNIT	ITEM
291.5	FOOT	FIBER OPTIC CABLE IN CONDUIT, NO. 62.5/125, 6F

CONTRACTOR SHOULD VERIFY EXISTING CONDUIT LENGTHS AND PULL POINTS PRIOR TO ORDERING CABLE. CONDUIT SHOWN IS BASED UPON HISTORICAL DATA.



PLOT DATE = 2/16/2005  
 FILE NAME = C:\p\projects\8012\8012.dwg  
 PLOT SCALE = 43.3735 / 1 IN.  
 REFERENCE = NREF

REVISIONS	
NAME	DATE

ILLINOIS DEPARTMENT OF TRANSPORTATION  
**PROPOSED INTERCONNECT DIAGRAM**  
 SANGAMON COUNTY  
 SCALE: VERT. 1" = 20'  
 HORIZ. 1" = 20'  
 DATE OCT. 2004  
 DRAWN BY KDA  
 CHECKED BY



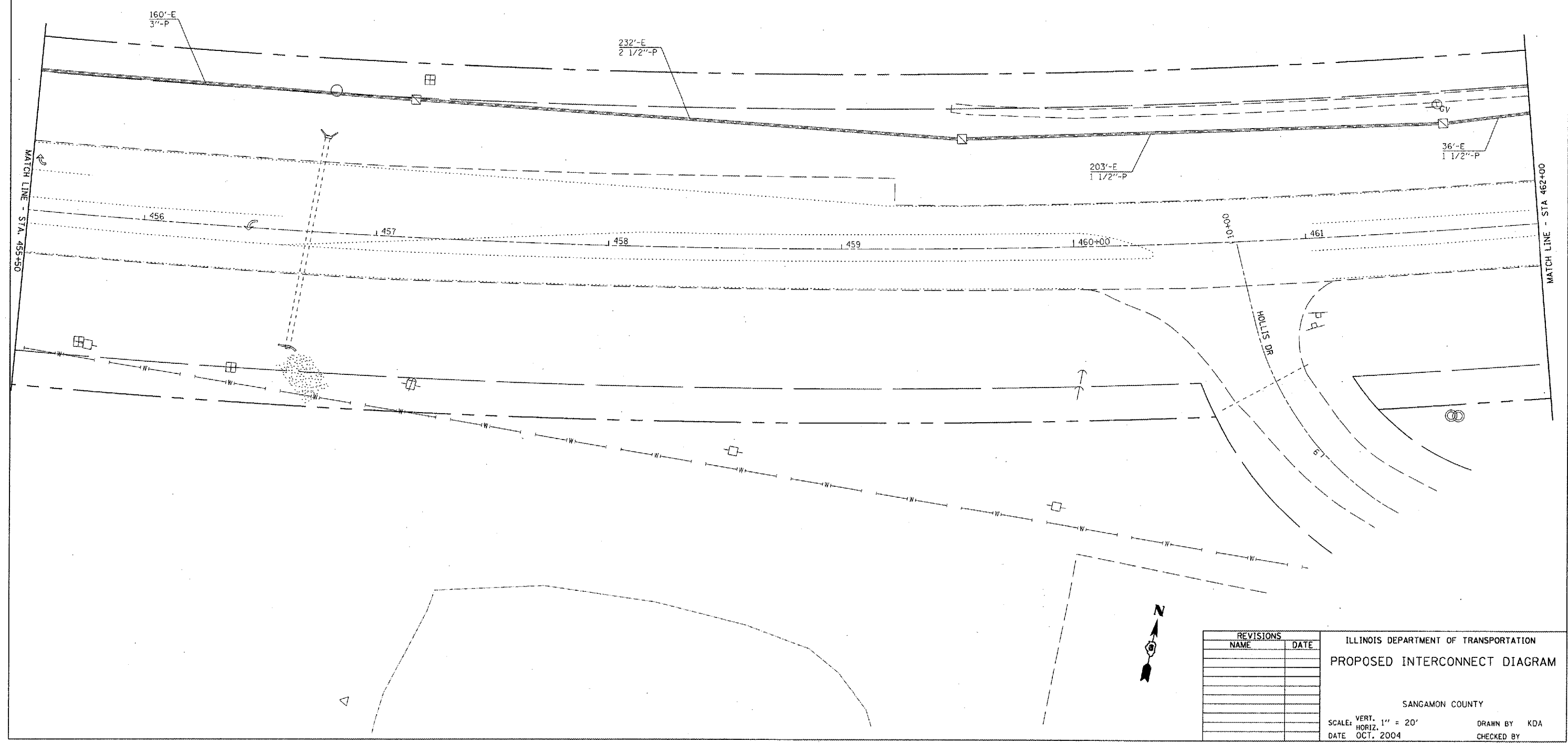
F.A.J. RTE.	SECTION	COUNTY	TOTAL SHEETS	SHEET NO.
8012		SANGAMON	13	9
STA.		TO STA.		
FED. ROAD DIST. NO.		ILLINOIS	FED. AID PROJECT	

• D-6 MISC TRAFFIC CONTROL 2006

TRAFFIC SIGNAL QUANTITIES

QUANTITY	UNIT	ITEM
635.5	FOOT	FIBER OPTIC CABLE IN CONDUIT, NO. 62.5/125, 6F

CONTRACTOR SHOULD VERIFY EXISTING CONDUIT LENGTHS AND PULL POINTS PRIOR TO ORDERING CABLE. CONDUIT SHOWN IS BASED UPON HISTORICAL DATA.



PLOT DATE = 2/16/2005  
 FILE NAME = C:\p\proj\8012\8012.dwg  
 PLOT SCALE = 43.3735 / 1 IN.  
 REFERENCE = #REF!



REVISIONS	
NAME	DATE

ILLINOIS DEPARTMENT OF TRANSPORTATION  
**PROPOSED INTERCONNECT DIAGRAM**  
 SANGAMON COUNTY  
 SCALE: VERT. 1" = 20'  
 DATE: OCT. 2004  
 DRAWN BY: KDA  
 CHECKED BY:

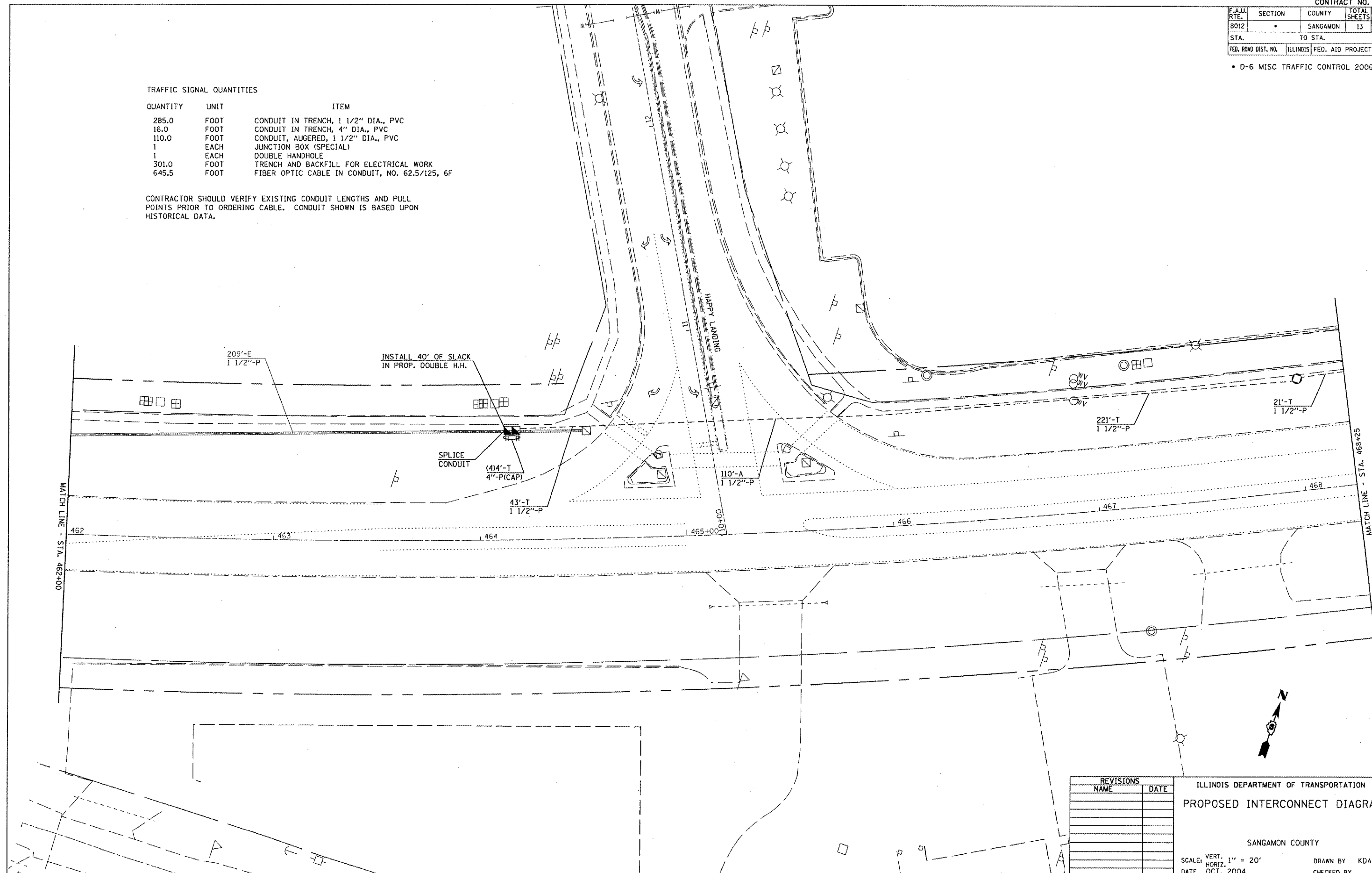
F.A.U. RTE.	SECTION	COUNTY	TOTAL SHEETS	SHEET NO.
8012		SANGAMON	13	10
STA.		TO STA.		
FED. ROAD DIST. NO.	ILLINOIS	FED. AID PROJECT		

• D-6 MISC TRAFFIC CONTROL 2006

TRAFFIC SIGNAL QUANTITIES

QUANTITY	UNIT	ITEM
285.0	FOOT	CONDUIT IN TRENCH, 1 1/2" DIA., PVC
16.0	FOOT	CONDUIT IN TRENCH, 4" DIA., PVC
110.0	FOOT	CONDUIT, AUGERED, 1 1/2" DIA., PVC
1	EACH	JUNCTION BOX (SPECIAL)
1	EACH	DOUBLE HANDHOLE
301.0	FOOT	TRENCH AND BACKFILL FOR ELECTRICAL WORK
645.5	FOOT	FIBER OPTIC CABLE IN CONDUIT, NO. 62.5/125, 6F

CONTRACTOR SHOULD VERIFY EXISTING CONDUIT LENGTHS AND PULL POINTS PRIOR TO ORDERING CABLE. CONDUIT SHOWN IS BASED UPON HISTORICAL DATA.



MATCH LINE - STA. 462+00

MATCH LINE - STA. 468+25



REVISIONS	
NAME	DATE

ILLINOIS DEPARTMENT OF TRANSPORTATION  
**PROPOSED INTERCONNECT DIAGRAM**  
 SANGAMON COUNTY  
 SCALE: VERT. 1" = 20'  
 HORIZ. 1" = 20'  
 DATE OCT, 2004  
 DRAWN BY KDA  
 CHECKED BY

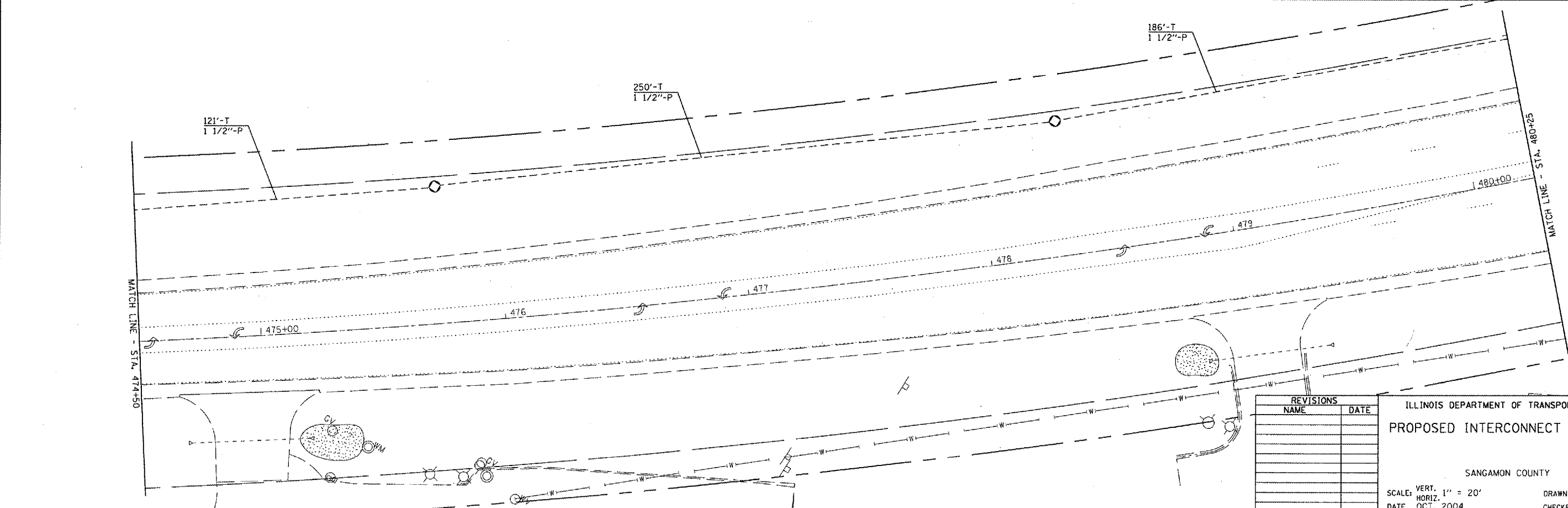
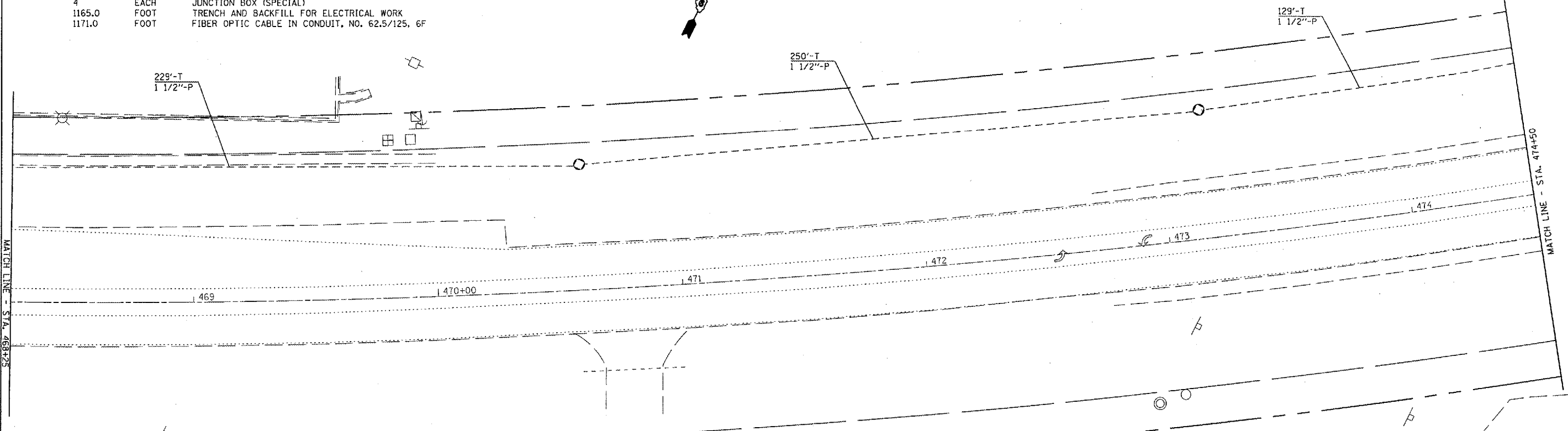
PLOT DATE = 2/18/2005  
 FILE NAME = C:\Projects\468048\10\_sheets.dgn  
 PLOT SCALE = 43.795 : 1 IN.  
 REFERENCE = #REF#

F.A.I. RTE.	SECTION	COUNTY	TOTAL SHEETS	SHEET NO.
8012		SANGAMON	13	11
STA.	TO STA.			
FED. ROAD DIST. NO.	ILLINOIS	FED. AID PROJECT		

TRAFFIC SIGNAL QUANTITIES

QUANTITY	UNIT	ITEM
1165.0	FOOT	CONDUIT IN TRENCH, 1 1/2" DIA., PVC
4	EACH	JUNCTION BOX (SPECIAL)
1165.0	FOOT	TRENCH AND BACKFILL FOR ELECTRICAL WORK
1171.0	FOOT	FIBER OPTIC CABLE IN CONDUIT, NO. 62.5/125, 6F

D-6 MISC. TRAFFIC CONTROL 2006



REVISIONS	
NAME	DATE

ILLINOIS DEPARTMENT OF TRANSPORTATION  
**PROPOSED INTERCONNECT DIAGRAM**  
 SANGAMON COUNTY  
 SCALE: VERT. 1" = 20'  
 HORIZ. 1" = 40'  
 DATE OCT. 2004  
 DRAWN BY KDA  
 CHECKED BY

PLOT DATE = 2/16/2005  
 FILE NAME = C:\p\projects\72941\72941.dwg  
 PLOT SCALE = 1/8" = 1'-0"  
 REFERENCE = WIER

F.A.U. RTE.	SECTION	COUNTY	TOTAL SHEETS	SHEET NO.
8012		SANGAMON	13	12

STA.	TO STA.

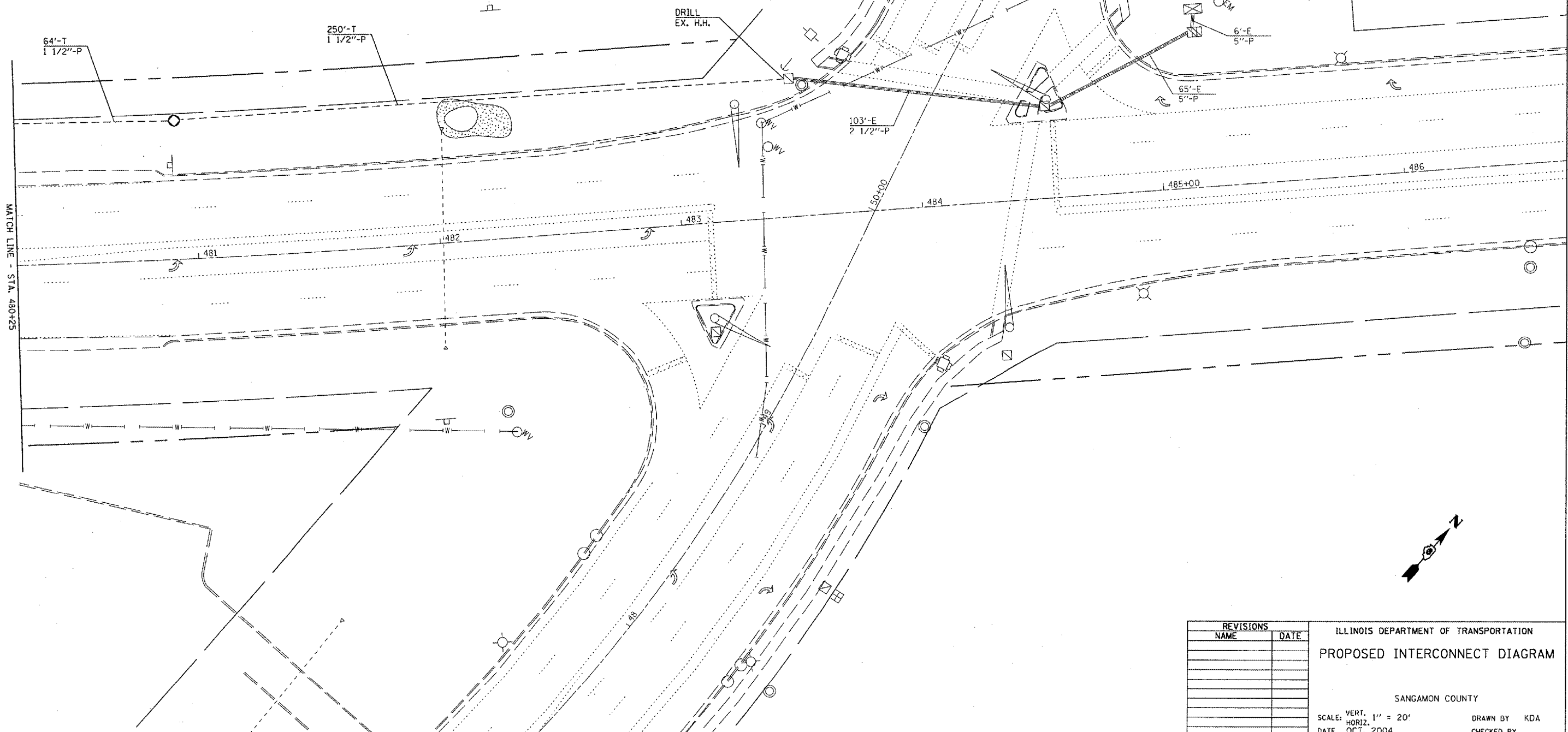
FED. ROAD DIST. NO. ILLINOIS FED. AID PROJECT

D-6 MISC TRAFFIC CONTROL 2006

TRAFFIC SIGNAL QUANTITIES

QUANTITY	UNIT	ITEM
314.0	FOOT	CONDUIT IN TRENCH, 1 1/2" DIA., PVC
1	EACH	JUNCTION BOX (SPECIAL)
314.0	FOOT	TRENCH AND BACKFILL FOR ELECTRICAL WORK
518.5	FOOT	FIBER OPTIC CABLE IN CONDUIT, NO. 62.5/125, 6F
1	EACH	DRILL EXISTING HANDHOLE

CONTRACTOR SHOULD VERIFY EXISTING CONDUIT LENGTHS AND PULL POINTS PRIOR TO ORDERING CABLE. CONDUIT SHOWN IS BASED UPON HISTORICAL DATA.



MATCH LINE - STA. 480+25

REVISIONS	
NAME	DATE

ILLINOIS DEPARTMENT OF TRANSPORTATION  
**PROPOSED INTERCONNECT DIAGRAM**  
 SANGAMON COUNTY  
 SCALE: VERT. 1" = 20'  
 HORIZ. 1" = 20'  
 DATE OCT. 2004  
 DRAWN BY KDA  
 CHECKED BY

PLOT DATE = 2/16/2005  
 FILE NAME = C:\p\projects\4859485\vs\_always.dgn  
 PLOT SCALE = 433795 / IN.  
 REFERENCE = WIER

F.A.U. RTE.	SECTION	COUNTY	TOTAL SHEETS	SHEET NO.
BO12		SANGAMON	13	13
STA.		TO STA.		
FED. ROAD DIST. NO.	ILLINOIS	FED. AID PROJECT		

### TRAFFIC SIGNAL PLAN LEGEND

EXISTING	PROPOSED	DESCRIPTION
		SIGNAL HEAD
		SIGNAL HEAD WITH BACKPLATE
		TEMPORARY SIGNAL HEAD
		PEDESTRIAN SIGNAL HEAD
		PEDESTRIAN PUSHBUTTON DETECTOR
		DETECTOR LOOP
		QUADRAPOLE DETECTOR LOOP
		SIGNAL POST
		ALUMINUM MAST ARM ASSEMBLY AND POLE
		STEEL MAST ARM ASSEMBLY AND POLE
		WOOD POLE
		WOOD POLE WITH GUY
		SERVICE INSTALLATION
		CONTROLLER
		HANDHOLE
		HEAVY DUTY HANDHOLE
		DOUBLE HANDHOLE
		JUNCTION BOX
		GULFBOX JUNCTION
		AERIAL CABLE
		CONDUIT LENGTH - CONSTRUCTION (T=TRENCH P=PUSHED A=AUGERED E=EXISTING) SIZE - TYPE (S=STEEL P=PVC F=FIBER DUCT U=UNI-DUCT)
		CONDUIT SPLICE
		SPAN WIRE / TETHER WIRE
		SIDEWALK REMOVAL IN SQ M
		PC CONC SDWLK 100 mm IN SQ M
		PC CONC SDWLK 100 mm SPECIAL IN SQ M

### TRAFFIC SIGNAL WIRING DIAGRAM LEGEND

EXISTING	PROPOSED	DESCRIPTION
		200 mm SIGNAL SECTION
		300 mm SIGNAL SECTION
		DIRECTIONAL SIGNAL SECTION
		225 mm PEDESTRIAN SIGNAL FACE
		300 mm PEDESTRIAN SIGNAL FACE
		SIGNAL FACE WITH BACKPLATE
		PROGRAMMED SIGNAL SECTION
		SIGNAL SECTION WITH LOUVRE
		DUAL-INDICATION SIGNAL SECTION
		INDUCTION DETECTOR LOOP
		QUADRAPOLE DETECTOR LOOP
		DIRECT-CONNECTED LOOP LEAD-IN ( TWISTED )
		ELECTRIC CABLE DENOTING NUMBER OF CONDUCTORS
		ELECTRIC CABLE TO BE REMOVED
		ELECTRIC CABLE IDENTIFIER TAPE CODES (R= RED W= WHITE Y= YELLOW G= GREEN B= BLUE O= ORANGE)
		PEDESTRIAN PUSHBUTTON DETECTOR

PLOT DATE = 2/16/2005  
 FILE NAME = C:\p\10689485\ts\_ahs\ts.dgn  
 PLOT SCALE = 43.0736 / 1 IN.

REVISIONS		ILLINOIS DEPARTMENT OF TRANSPORTATION
NAME	DATE	
		TRAFFIC SIGNAL LEGEND

SCALE: VERT. DATE  
HORIZ. CHECKED BY  
DRAWN BY