

FAP ROUTE	SECTION	COUNTY	TOTAL SHEETS	SHEET NO.
789	1T	MADISON	15	7
STA.	TO STA.			

CONTRACT NO.: 76648

GENERAL NOTES

SHOP PLANS FOR THE REINFORCEMENT SHALL BE SUBMITTED IN ACCORDANCE WITH THE REQUIREMENTS OF ARTICLE 504.04(A) OF THE STANDARD SPECIFICATIONS.

MINIMUM CONCRETE STRENGTH SHALL BE 5000 PSI AFTER 28 DAYS.

THE JOINTS OF THE PRECAST BOX SECTIONS SHALL BE SEALED WITH MASTIC IN ACCORDANCE WITH ARTICLE 755.01 OF THE STANDARD SPECIFICATIONS FOR ROAD AND BRIDGE CONSTRUCTION.

LIFTING HOLES SHALL BE FILLED WITH CONCRETE PLUGS AND MASTIC AFTER THE BOX SECTIONS ARE IN PLACE.

THE TERMS AS1, AS2, AND AS3 DENOTE THE REQUIRED STEEL AREAS FOR REINFORCEMENT AS SPECIFIED IN ASTM C 789. REINFORCEMENT SHALL BE OF WELDED WIRE FABRIC CONFORMING TO ASTM SPECIFICATIONS S 185.

DRAINAGE OPENINGS SHALL BE PROVIDED IN ACCORDANCE WITH ARTICLE 503.12 OF THE STANDARD SPECIFICATIONS. LOCATION AND SPACING OF THE OPENINGS SHALL BE SHOWN ON THE SHOP DRAWINGS.

DIMENSIONS

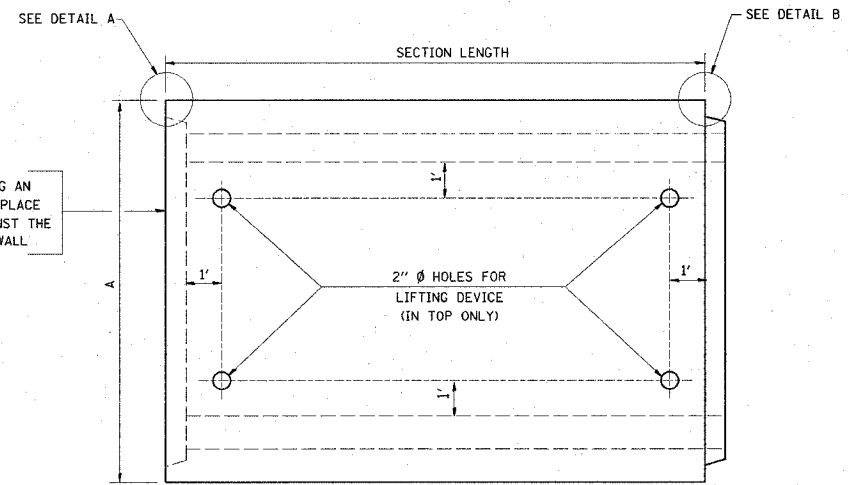
SPAN X RISE	T				A				B				C			
	(INCHES)	(FT-IN)	(FT-IN)	(INCHES)	(INCHES)	(FT-IN)	(FT-IN)	(INCHES)	(INCHES)	(FT-IN)	(FT-IN)	(INCHES)	(INCHES)	(FT-IN)	(FT-IN)	
2' X2'	4	2-8	2-8	4	9' X5'	9	10-6	6-6	9							
3' X2'	4	3-8	2-8	4	9' X6'	9	10-6	7-6	9							
3' X3'	4	3-8	3-8	4	9' X7'	9	10-6	8-6	9							
4' X2'	5	4-10	2-10	5	9' X8'	9	10-6	9-6	9							
4' X3'	5	4-10	3-10	5	9' X9'	9	10-6	10-6	9							
4' X4'	5	4-10	4-10	5												
5' X2'	6	6-0	3-0	6	10' X4'	10	11-8	5-8	10							
5' X3'	6	6-0	4-0	6	10' X5'	10	11-8	6-8	10							
5' X4'	6	6-0	5-0	6	10' X6'	10	11-8	7-8	10							
5' X5'	6	6-0	6-0	6	10' X7'	10	11-8	8-8	10							
6' X2'	7	7-2	3-2	7	10' X8'	10	11-8	9-8	10							
6' X3'	7	7-2	4-2	7	10' X9'	10	11-8	10-8	10							
6' X4'	7	7-2	5-2	7	10' X10'	10	11-8	11-8	10							
6' X5'	7	7-2	6-2	7												
6' X6'	7	7-2	7-2	7	11' X4'	11	12-10	5-10	11							
					11' X6"	11	12-10	7-10	11							
					11' X8'	11	12-10	9-10	11							
7' X4'	8	8-4	5-4	8	11' X10'	11	12-10	11-10	11							
7' X5'	8	8-4	6-4	8	11' X11'	11	12-10	12-10	11							
7' X6'	8	8-4	7-4	8												
7' X7'	8	8-4	8-4	8												
					12' X4'	12	14-0	6-0	12							
8' X4'	8	9-4	5-4	8	12' X6'	12	14-0	8-0	12							
8' X5'	8	9-4	6-4	8	12' X8'	12	14-0	10-0	12							
8' X6'	8	9-4	7-4	8	12' X10'	12	14-0	12-0	12							
8' X7'	8	9-4	8-4	8	12' X12'	12	14-0	14-0	12							
8' X8'	8	9-4	9-4	8												

(WITH COVER 2 FEET OR GREATER
ASTM DESIGNATION C-789)
DESIGN LOADING: HS-20-44

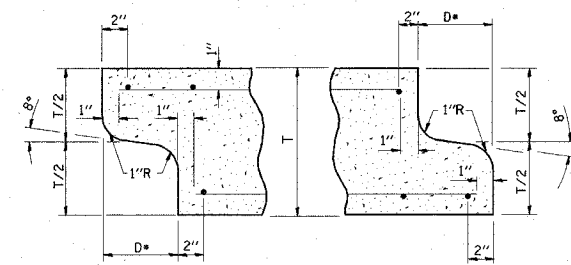
REVISIONS	
NAME	DATE

ILLINOIS DEPARTMENT OF TRANSPORTATION
**DETAILS OF PRECAST CONCRETE
BOX CULVERT**
FAP ROUTE 789
SECTION 1T
MADISON COUNTY

DRAWN BY:
PLOT DATE: 3/30/2005

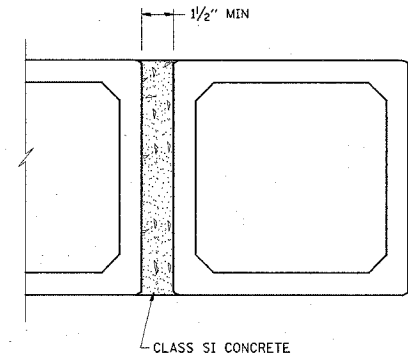


PLAN
LOCATION OF LIFTING HOLES MAY BE VARIED AS NEEDED TO CLEAR REINFORCEMENT.

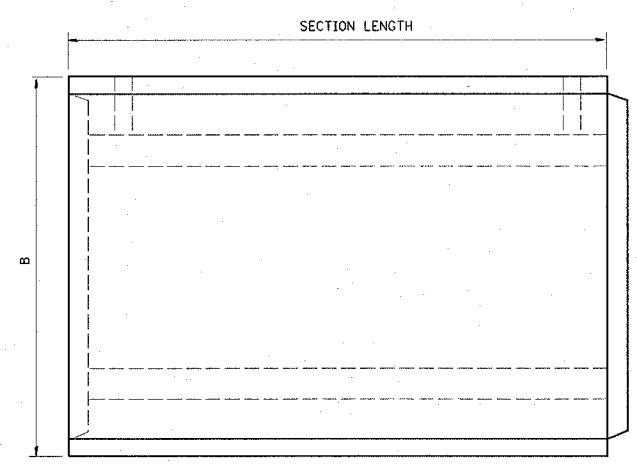


DETAIL A (TYP INLET END)
DETAIL B (TYP OUTLET END)

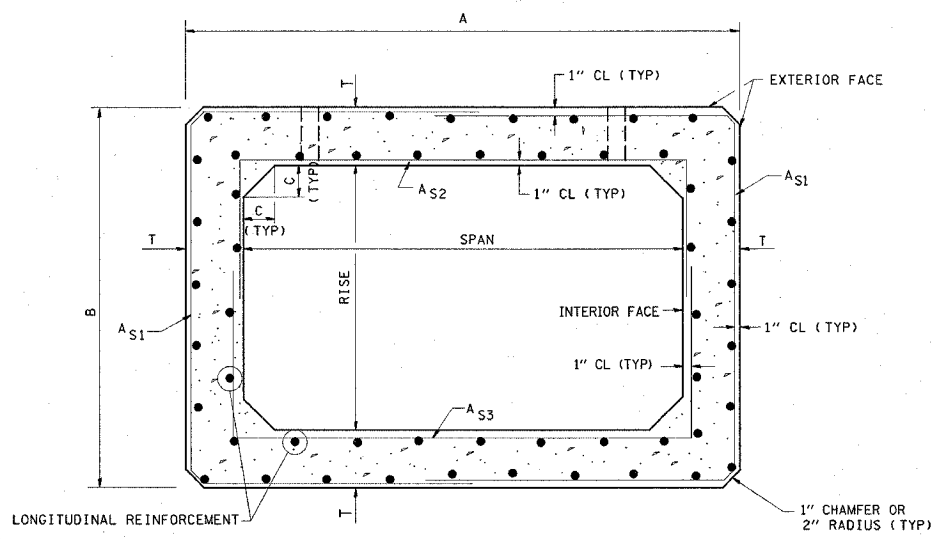
NOTE: INLET AND OUTLET ENDS SHALL BE COMPATIBLE
* THE D DIMENSION SHALL CONFORM TO THE MANUFACTURER'S STANDARDS.



MULTIPLE UNIT PLACEMENT



ELEVATION



CROSS SECTION

DATE	
BY	
PLAN	
NO. OF REVISIONS	
NO. OF PAGES CHECKED	
NO. OF FILES CHECKED	
NO.	

3/30/2005
c:\projects\76648\plan\p107.dgn
REF