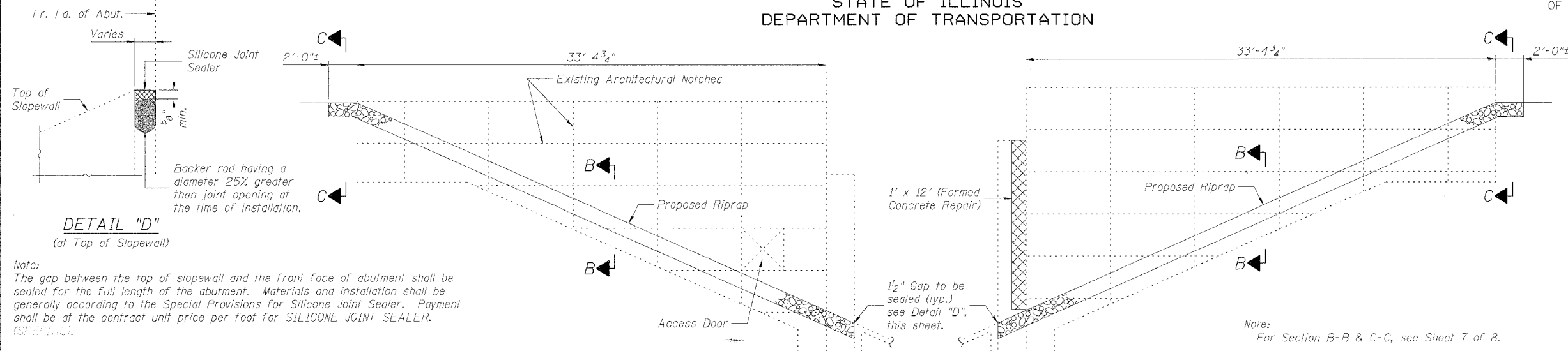


STATE OF ILLINOIS
DEPARTMENT OF TRANSPORTATION

SHEET 8
OF 8

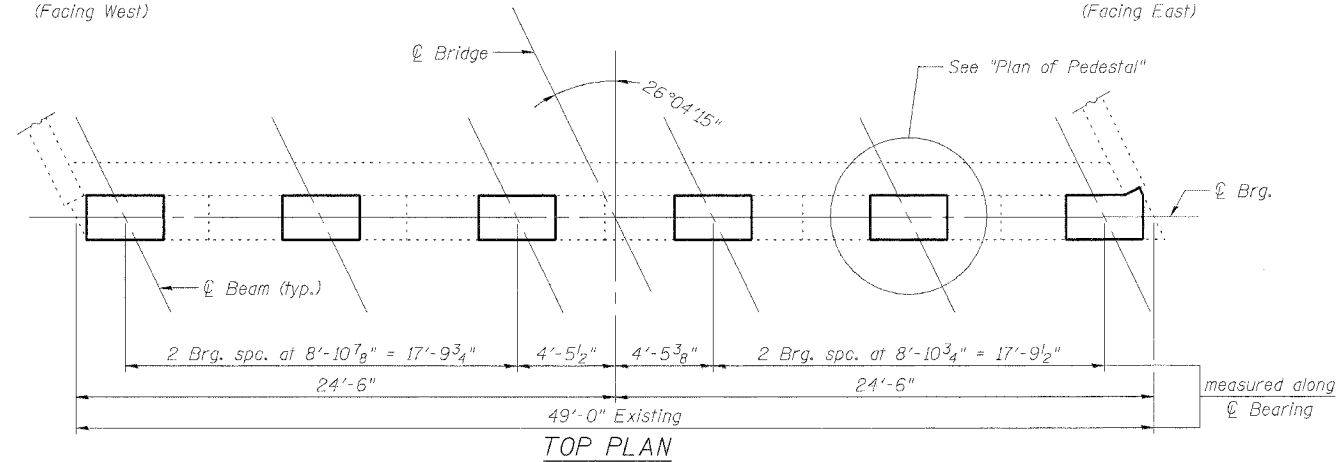
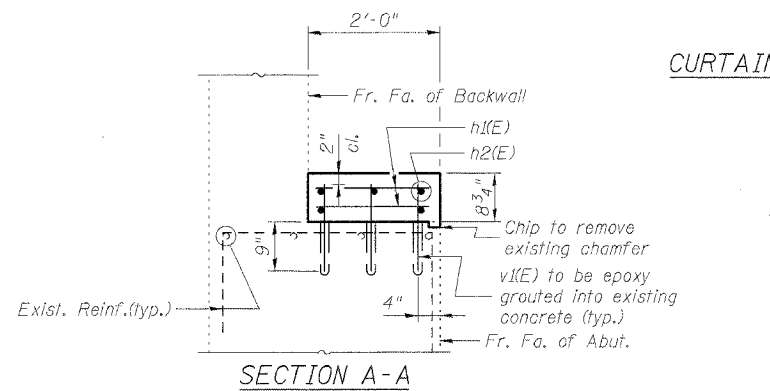
F.A.I. RTE.	SECTION	COUNTY	TOTAL SHEETS	SHEET NO.
64	82-7RS-1, 82-7HB-1, 21	ST. CLAIR	89	66
FED. ROAD DIST. NO.	ILLINOIS FED. AID PROJECT			
CONTRACT NO. 76813				



Note:
The gap between the top of slopewall and the front face of abutment shall be sealed for the full length of the abutment. Materials and installation shall be generally according to the Special Provisions for Silicone Joint Sealer. Payment shall be of the contract unit price per foot for SILICONE JOINT SEALER. (SPEC. 11.11.1)

CURTAIN WALL ELEVATION
(Facing West)

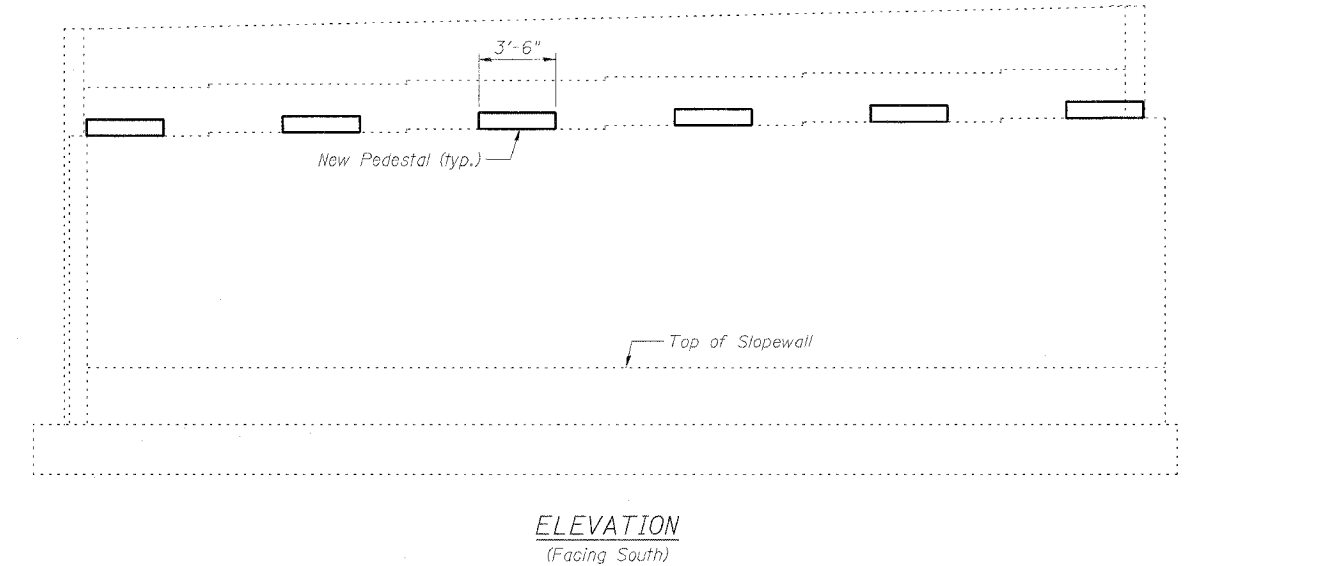
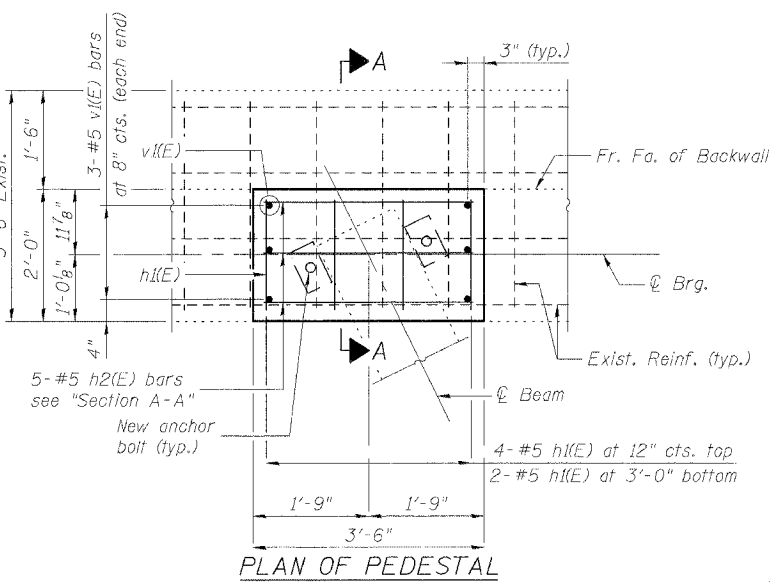
CURTAIN WALL ELEVATION
(Facing East)



BILL OF MATERIAL

Bar	No.	Size	Length	Shape	
h1(E)	36	#5	1'-8"		
h2(E)	30	#5	3'-2"		
v1(E)	36	#5	1'-4"		
Concrete Structures				Cu. Yd.	1.2
Reinforcement Bars, Epoxy Coated				Pound	220
Bridge Seat Sealer				Sq. Ft.	98
Formed Concrete Repair (Depth = < 5")				Sq. Ft.	12
Silicone Joint Sealer				Foot	49
Stone Riprap, Class A1				Ton	31
Stone Riprap, Class A3				Ton	28
Filter Fabric for use with Riprap				Sq. Yd.	110

Reinforcement Bars designated (E) shall be epoxy coated.



SOUTH ABUTMENT
S. LINCOLN AVE. (FAS 843) OVER
INTERSTATE 64
F.A.I. 64 SEC. 82-7RS-1, 82-7HB-1, 21
ST. CLAIR COUNTY
STATION 816+85.18
STRUCTURE NO. 082-0181

JD Johnson, Depp & Quisenberry
CONSULTING ENGINEERS
Springfield, Illinois

DESIGNED: CDB	DRAWN: P. Ray
CHECKED: DCD	CHECKED: CDB/DCD

FILE: F:\110132_IL-DBVY#2 1-64 Bridge Repair-s2-510181-LincolnAve\08sabut.dgn
USER: P. Ray
DATE: 03/28/2005 - 12:16:34