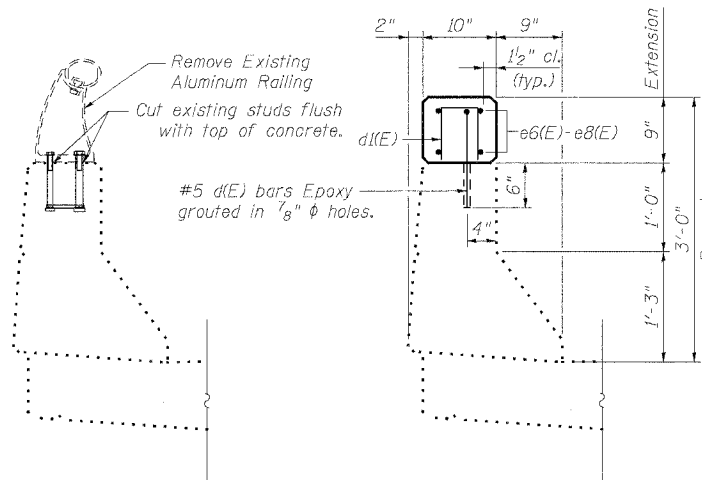


STATE OF ILLINOIS  
DEPARTMENT OF TRANSPORTATION

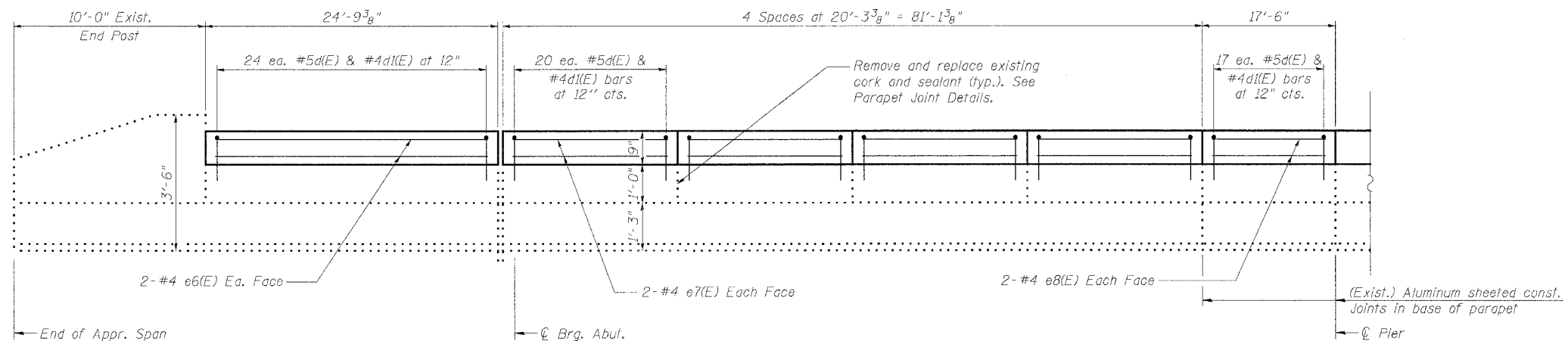
SHEET 3  
OF 8

F.A.I. RTE.	SECTION	COUNTY	TOTAL SHEETS	SHEET NO.
64	82-7RS-1, 82-7HB-1, 21	ST. CLAIR	89	72
FED. ROAD DIST. NO.	ILLINOIS	FED. AID PROJECT	CONTRACT NO. 76813	

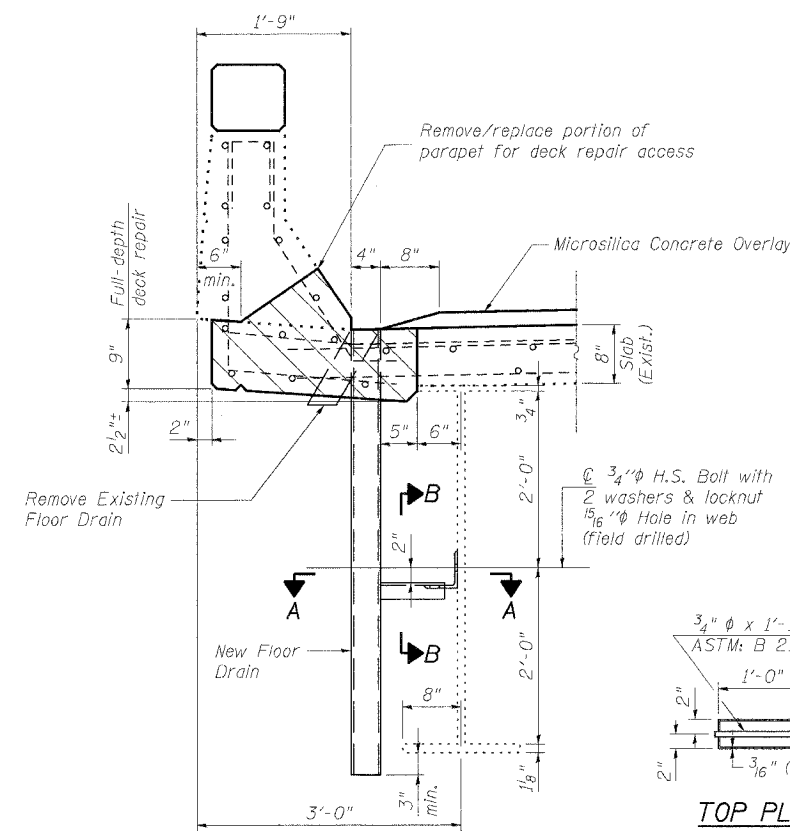


BRIDGE RAIL REMOVAL

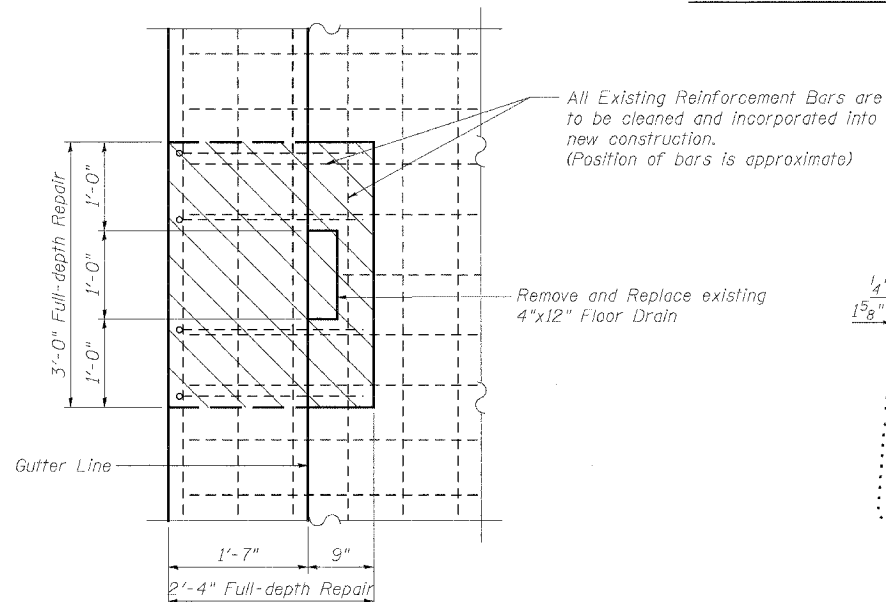
SECTION THRU PARAPET



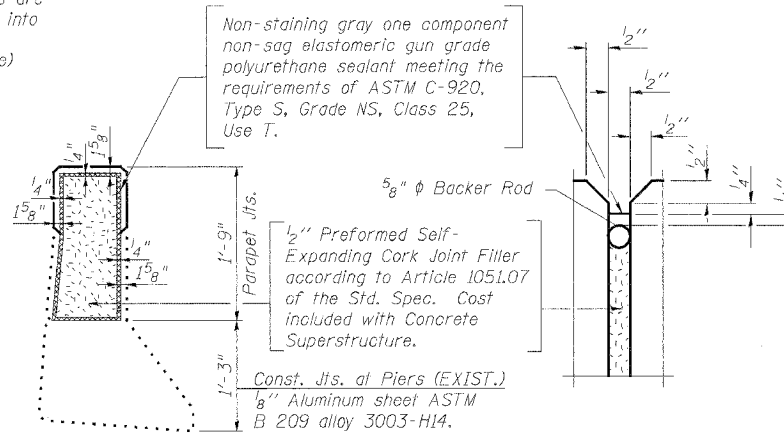
INSIDE ELEVATION OF PARAPET



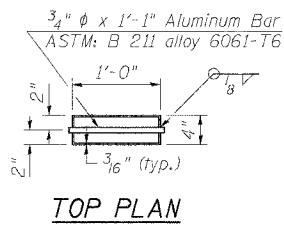
SECTION AT FLOOR DRAIN



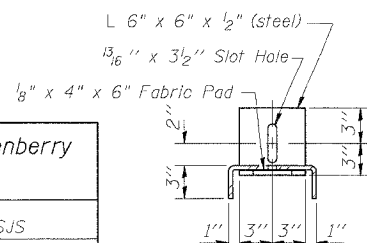
PLAN AT FLOOR DRAIN  
(Parapet Removed For Clarity)



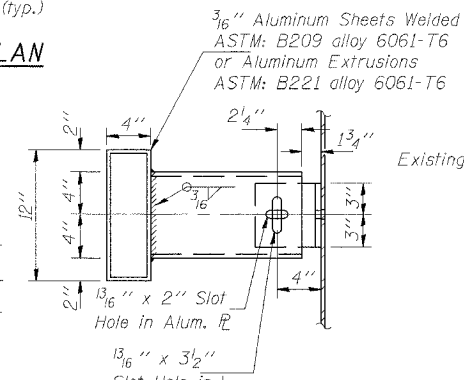
PARAPET JOINT DETAILS



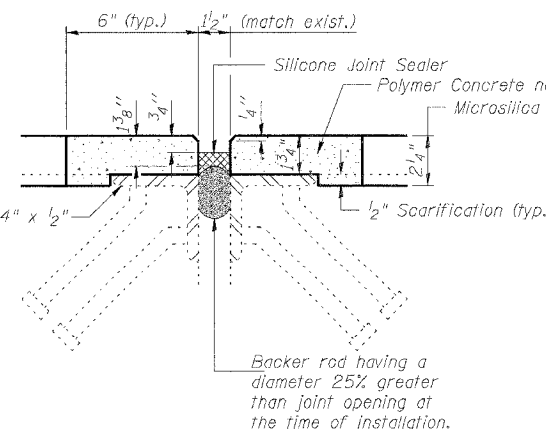
TOP PLAN



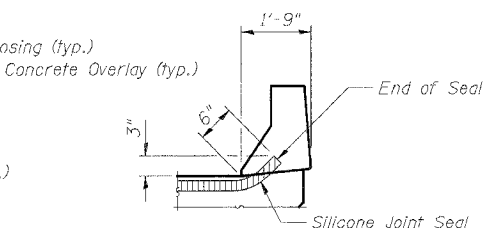
SECTION B-B



SECTION A-A



SILICONE JOINT SEALER DETAIL



TYPICAL END OF SEAL TREATMENT  
AT EXPANSION JOINT

BAR d(E)

BAR d1(E)

SUPERSTRUCTURE  
BILL OF MATERIAL

Bar	No.	Size	Length	Shape
d(E)	484	#5	1'-7"	L
d1(E)	484	#4	1'-7"	Π
e6(E)	16	#4	24'-5"	—
e7(E)	64	#4	19'-11"	—
e8(E)	16	#4	17'-2"	—
Reinforcement Bars, Epoxy Coated		Pound	2610	
Concrete Superstructure		Cu. Yd.	11.1	
Bridge Rail Removal		Foot	497	
Floor Drains		Each	8	
Deck Slab Repair (Full Depth Type II)		Sq. Yd.	7	
Formed Concrete Repair (Depth = < 5")		Sq. Ft.	9	
Silicone Joint Sealer, 1/2"		Foot	97	
Polymer Concrete		Cu. Ft.	15	

Reinforcement bars designated (E) shall be epoxy coated.

SUPERSTRUCTURE  
N. MAIN STREET (FAS 844) OVER  
INTERSTATE 64  
F.A.I. 64 SEC. 82-7RS-1, 82-7HB-1, 21  
ST. CLAIR COUNTY  
STATION 883+53.16  
STRUCTURE NO. 082-0182

**Johnson, Depp & Quisenberry**  
CONSULTING ENGINEERS  
Springfield, Illinois

DESIGNED: CDB	DRAWN: SJS
CHECKED: DCD	CHECKED: CDB/DCD

FILE: F:\10132\_IL-DBV\2-F64 Bridge Repair\3-SN0162-main\3-03super-err.dgn

USER: P. Roy

DATE: 03/28/2005 - 12:28:06