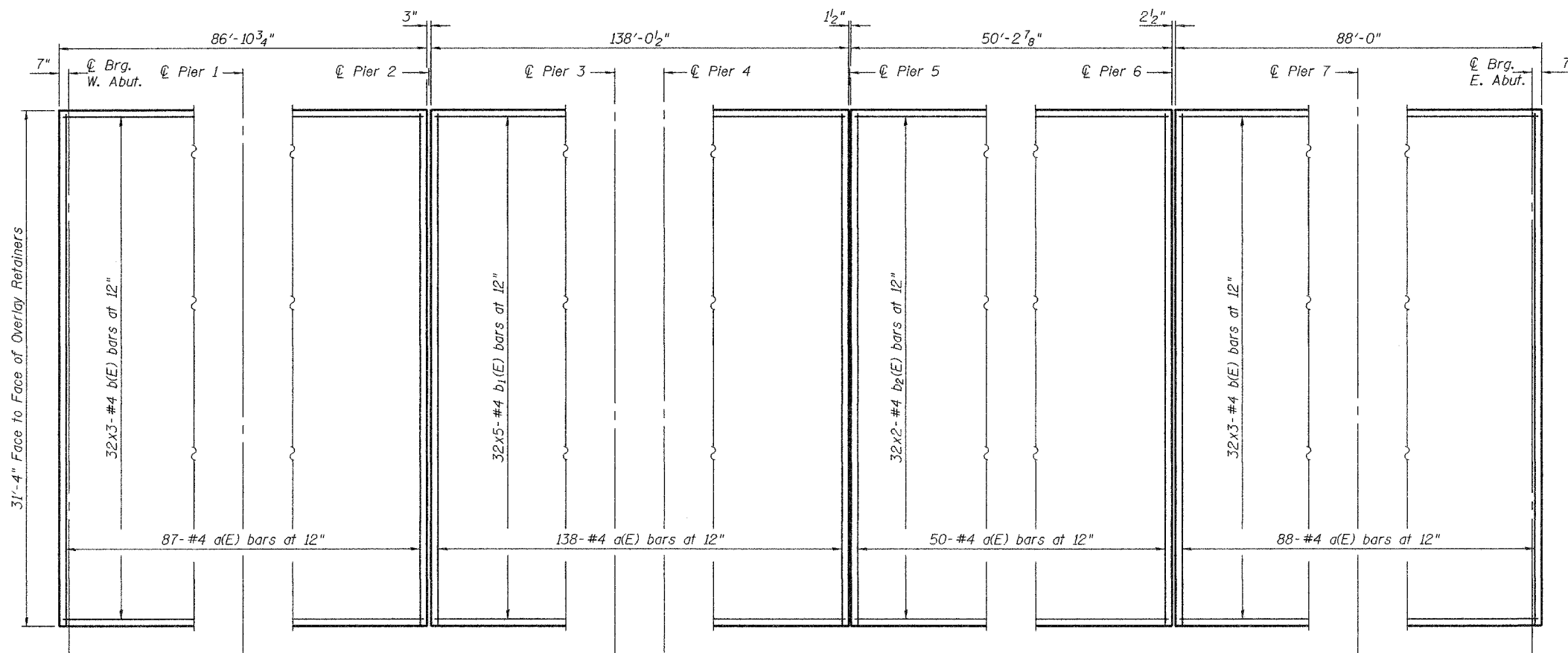


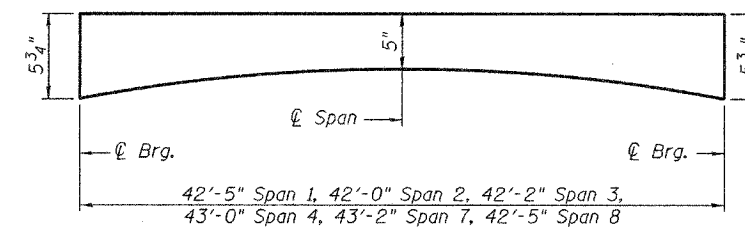
STATE OF ILLINOIS
DEPARTMENT OF TRANSPORTATION

ROUTE NO.	SECTION	COUNTY	TRUCKS	SHEET NO.	SHEET NO. 2 12 SHEETS
		Bond	26	11	
FED. ROAD DIST. NO. 7		ILLINOIS	FED. AID PROJECT-		

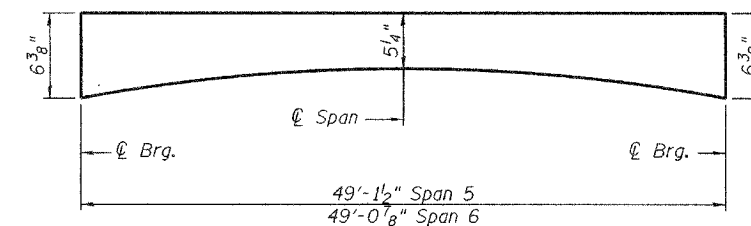
Contract Number: 76860



CONCRETE OVERLAY PARTIAL PLAN



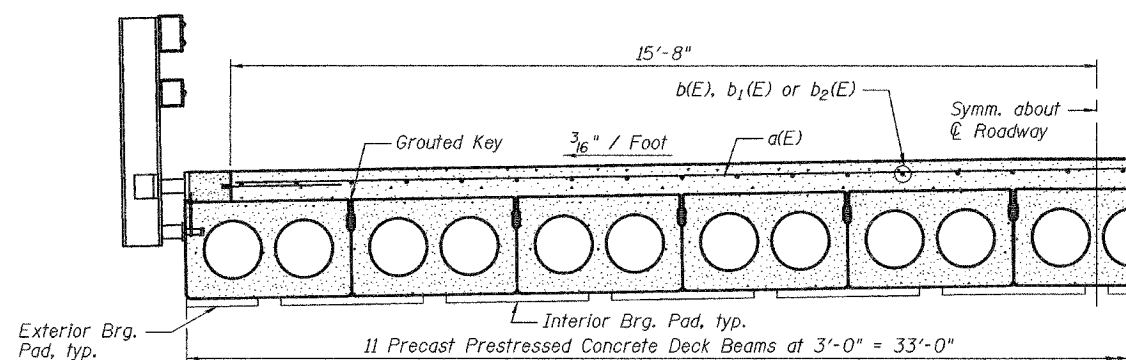
CONCRETE WEARING SURFACE PROFILE
SPANS 1 THRU 4, 7 AND 8



CONCRETE WEARING SURFACE PROFILE
SPANS 5 AND 6

Note:
Thicknesses shown are for Beams 1 thru 5 and 7 thru 11. Thickness for Beam 6 will vary from those shown at beam edges to 1/4" additional at \varnothing Roadway.

MIN. BAR LAP
#4 = 1'-4"



HALF CROSS SECTION

BILL OF MATERIAL

Bar	No.	Size	Length	Shape
a(E)	363	#4	31'-0"	—
b(E)	192	#4	30'-2"	—
b1(E)	160	#4	28'-8"	—
b2(E)	64	#4	25'-8"	—
Reinforcement Bars, Epoxy Coated			Pound	15,550

Reinforcement bars designated (E) shall be epoxy coated.
Bars indicated thus 1 x 2-#5 etc. indicates 1 line of bars with 2 lengths per line.

DESIGNED	P.S.J.
CHECKED	V.H.V.
DRAWN	Drew Christopher
CHECKED	P.S.J. V.H.V.

May 9, 2005
EXAMINED *John A. Morris*
ENGINEER OF STRUCTURAL SERVICES
PASSED *Ralph E. Anderson*
ENGINEER OF BRIDGES AND STRUCTURES

OVERLAY DETAILS
F.A.P. RT. 785
BOND COUNTY
SN 003-0024