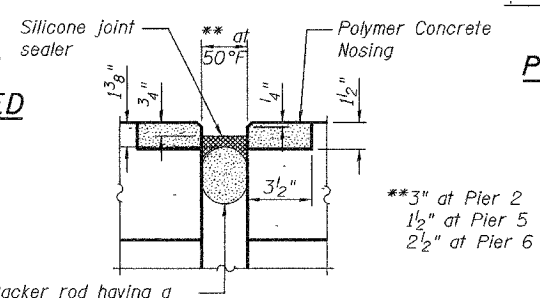
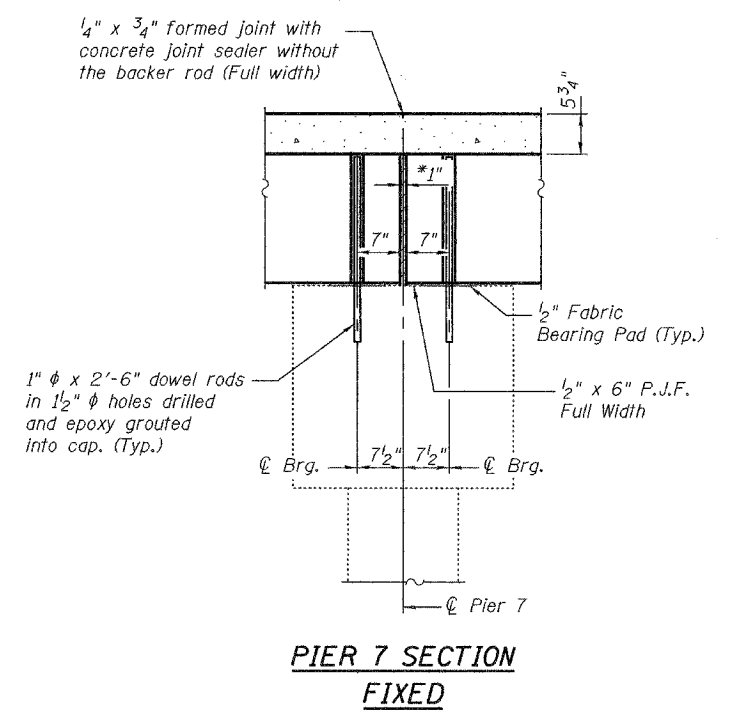
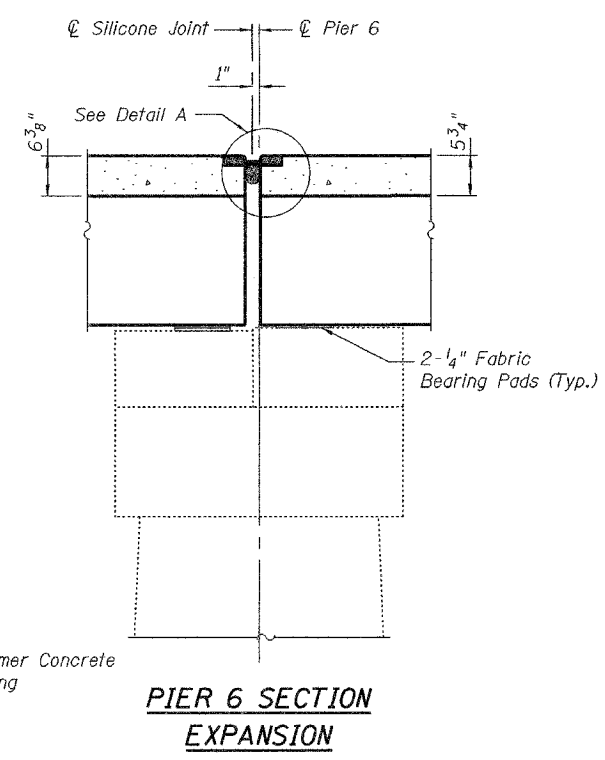
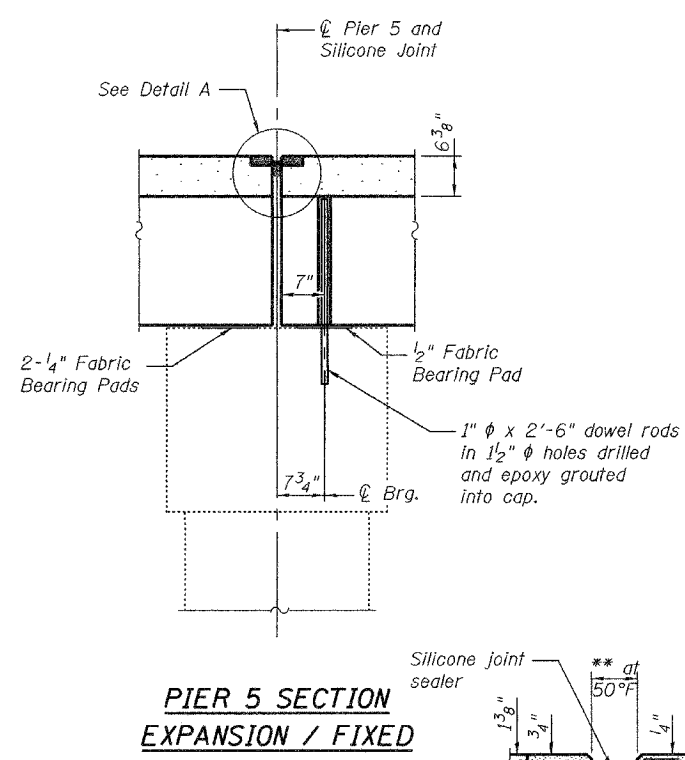
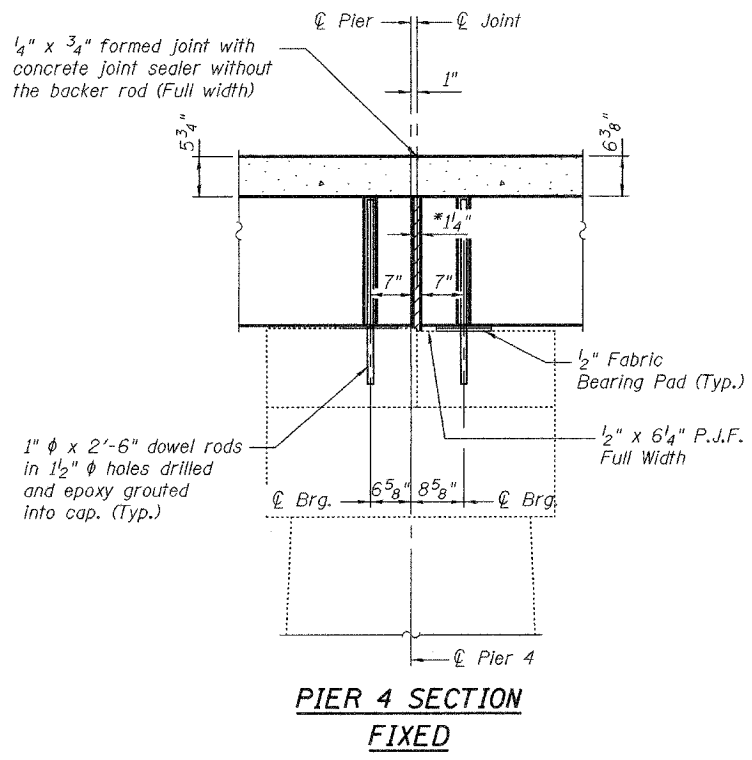
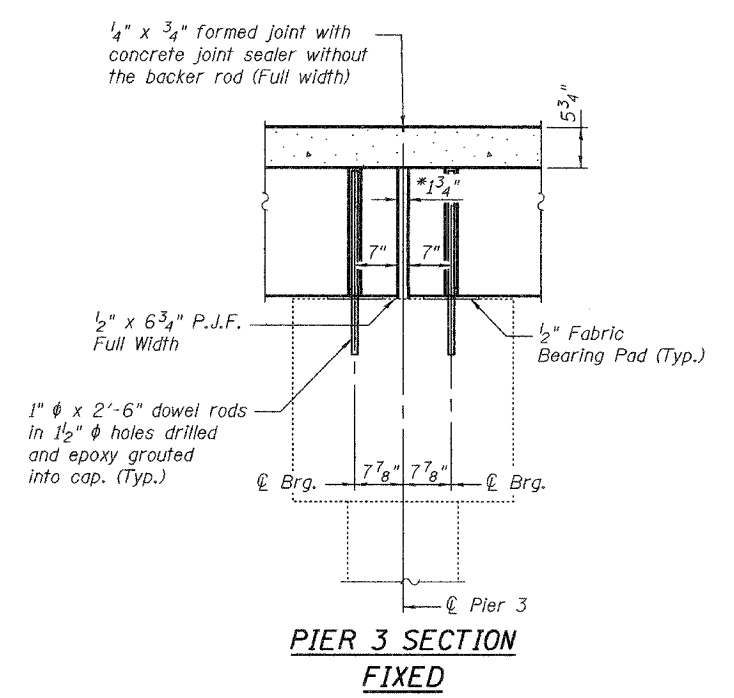
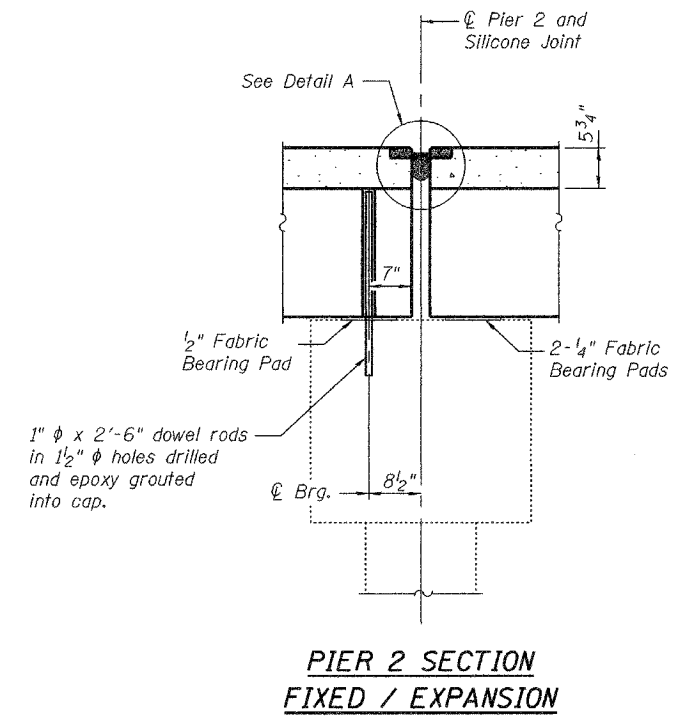
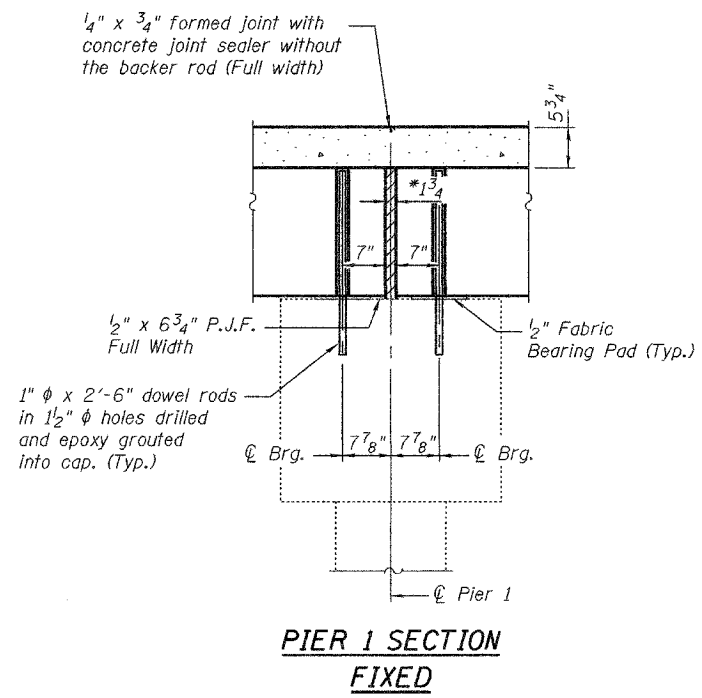
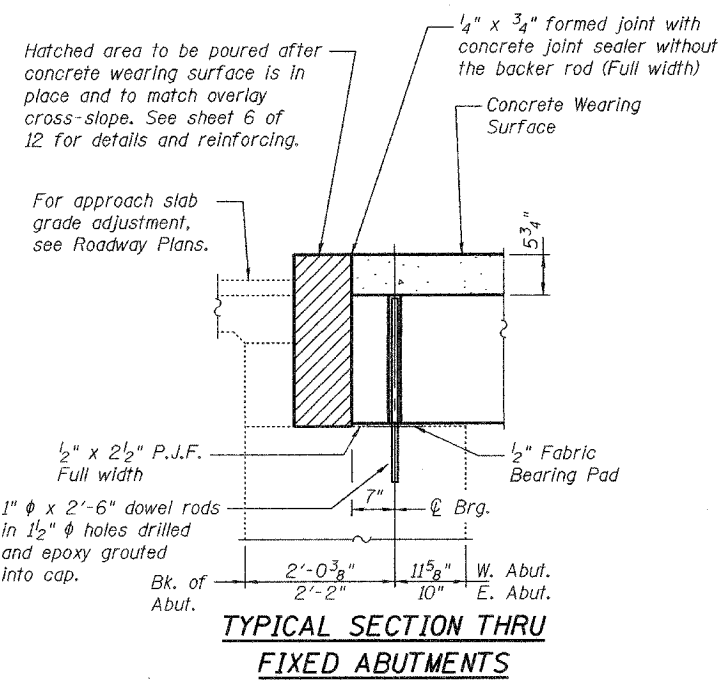


STATE OF ILLINOIS  
DEPARTMENT OF TRANSPORTATION

ROUTE NO.	SECTION	COUNTY	PROJECT NO.	SHEET NO.
		Bond	26	12
FED. ROAD DIST. NO. 7		ILLINOIS FED. AID PROJECT-		

SHEET NO. 3  
12 SHEETS

Contract Number: 76860



\*Joint shall be filled with non-shrink grout. This dimension may vary plus or minus to accommodate tolerance in beam lengths.

Backer rod having a diameter 25% greater than joint opening at the time of installation

Notes:  
All Pier sections are looking North.  
After beams have been erected, holes shall be drilled into substructure and anchor dowels placed 1'-3" Minimum into existing caps. Dowel holes shall be filled with non-shrink grout to top of beam and allowed to cure min 24 hours prior to grouting the shear keys.

DESIGNED	P.S.J.
CHECKED	V.H.V.
DRAWN	Drew Christopher
CHECKED	P.S.J. V.H.V.

May 9, 2005

EXAMINED *John A. Morris*  
ENGINEER OF STRUCTURAL SERVICES

PASSED *Ralph E. Anderson*  
ENGINEER OF BRIDGES AND STRUCTURES

**ABUTMENT AND PIER JOINT DETAILS**  
F.A.P. RT.785  
BOND COUNTY  
SN 003-0024