

STATE OF ILLINOIS  
DEPARTMENT OF TRANSPORTATION  
DIVISION OF HIGHWAYS

# PROPOSED TRAFFIC SIGNAL MODIFICATION and INTERCONNECT PLAN

## FINLEY ROAD (BROOK ROAD TO FINLEY SQUARE) VILLAGE OF DOWNERS GROVE

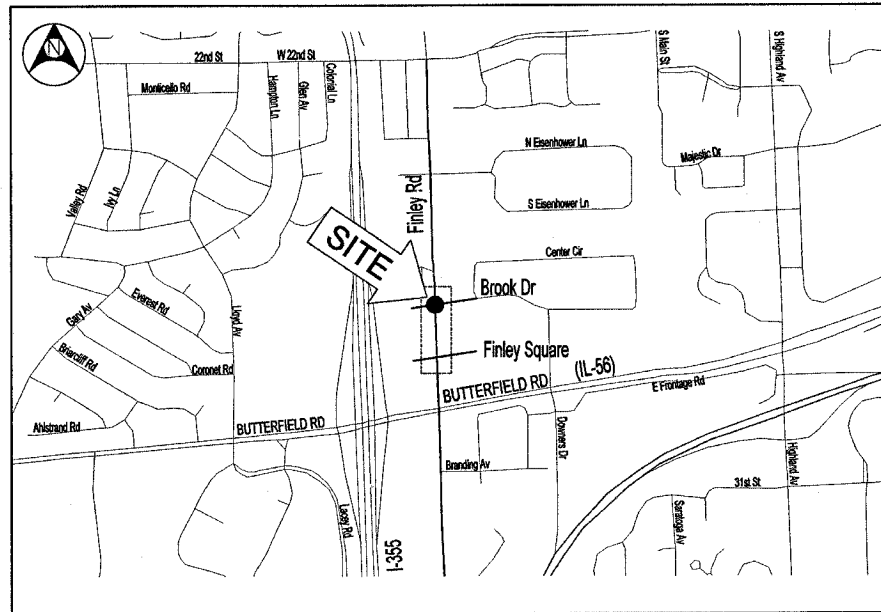
SECTION 02-00091-00-TL  
PROJECT NO: M-8003 (428)  
DUPAGE COUNTY  
JOB NUMBER C91-264-04

### INDEX

1. TITLE SHEET
2. SUMMARY OF QUANTITIES
- 3-6. ILLINOIS DEPARTMENT OF TRANSPORTATION DISTRICT 1 STANDARD TRAFFIC SIGNAL DESIGN DETAILS
7. TEMPORARY TRAFFIC SIGNAL PLAN
8. TRAFFIC SIGNAL INSTALLATION PLAN - FINLEY ROAD @ BROOK DRIVE
9. CABLE PLAN, PHASE DESIGNATION DIAGRAM AND SCHEDULE OF QUANTITIES - FINLEY ROAD @ BROOK DRIVE
10. SIGNAL INTERCONNECT PLAN FINLEY ROAD / BROOK DRIVE TO FINLEY SQUARE
11. INTERCONNECT SCHEMATIC AND SCHEDULE OF QUANTITIES - FINLEY ROAD / BROOK DRIVE TO FINLEY SQUARE
12. MAST ARM MOUNTED STREET NAME SIGNS
13. CONSTRUCTION DETAILS

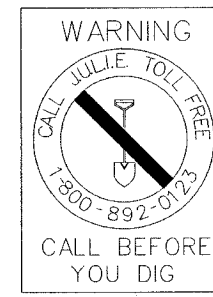
### STANDARDS

STANDARD 701301-02	STANDARD 880001
STANDARD 702001-05	STANDARD 880006
STANDARD 424001-03	STANDARD 886001
STANDARD 720001	STANDARD 701501-03
STANDARD 814001	STANDARD 701601-04
STANDARD 814006	STANDARD 701701-04
STANDARD 857001	STANDARD 701801-03
STANDARD 877011-02	
STANDARD 878001-03	



**LOCATION MAP**

SPEED LIMIT FINLEY ROAD = 40 MPH  
SPEED LIMIT BROOK ROAD = 30 MPH



LOCATION OF SECTION INDICATED THIS: [shaded box]

STATE OF ILLINOIS  
DEPARTMENT OF TRANSPORTATION  
DIVISION OF HIGHWAYS

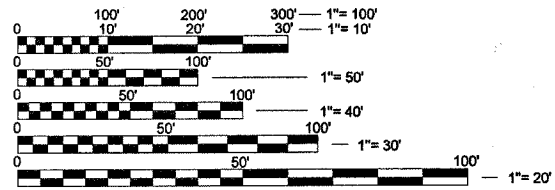
SUBMITTED September 22, 20 04

*Michael D. Mollity*  
LOCAL AGENCY OFFICIAL

December 4, 20 04  
*Paul J. Rude*  
DISTRICT ENGINEER OF LOCAL ROADS & STREET

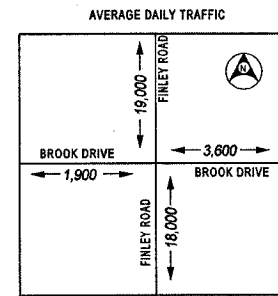
December 1, 20 04  
*Dina O'Keefe/PP*  
DISTRICT ENGINEER

**PRINTED BY THE AUTHORITY OF THE STATE OF ILLINOIS**



FULL SIZE PLANS HAVE BEEN PREPARED USING STANDARD ENGINEERING SCALES. REDUCED SIZED PLANS WILL NOT CONFORM TO STANDARD SCALES. IN MAKING MEASUREMENTS ON REDUCED PLANS, THE ABOVE SCALES MAY BE USED.

J.U.L.I.E.  
JOINT UTILITY LOCATION INFORMATION FOR EXCAVATION  
1-800-892-0123



FEDERAL AID COORDINATOR: PHIL MARCYN (847) 705-4189

CONTRACT NO. 83759