

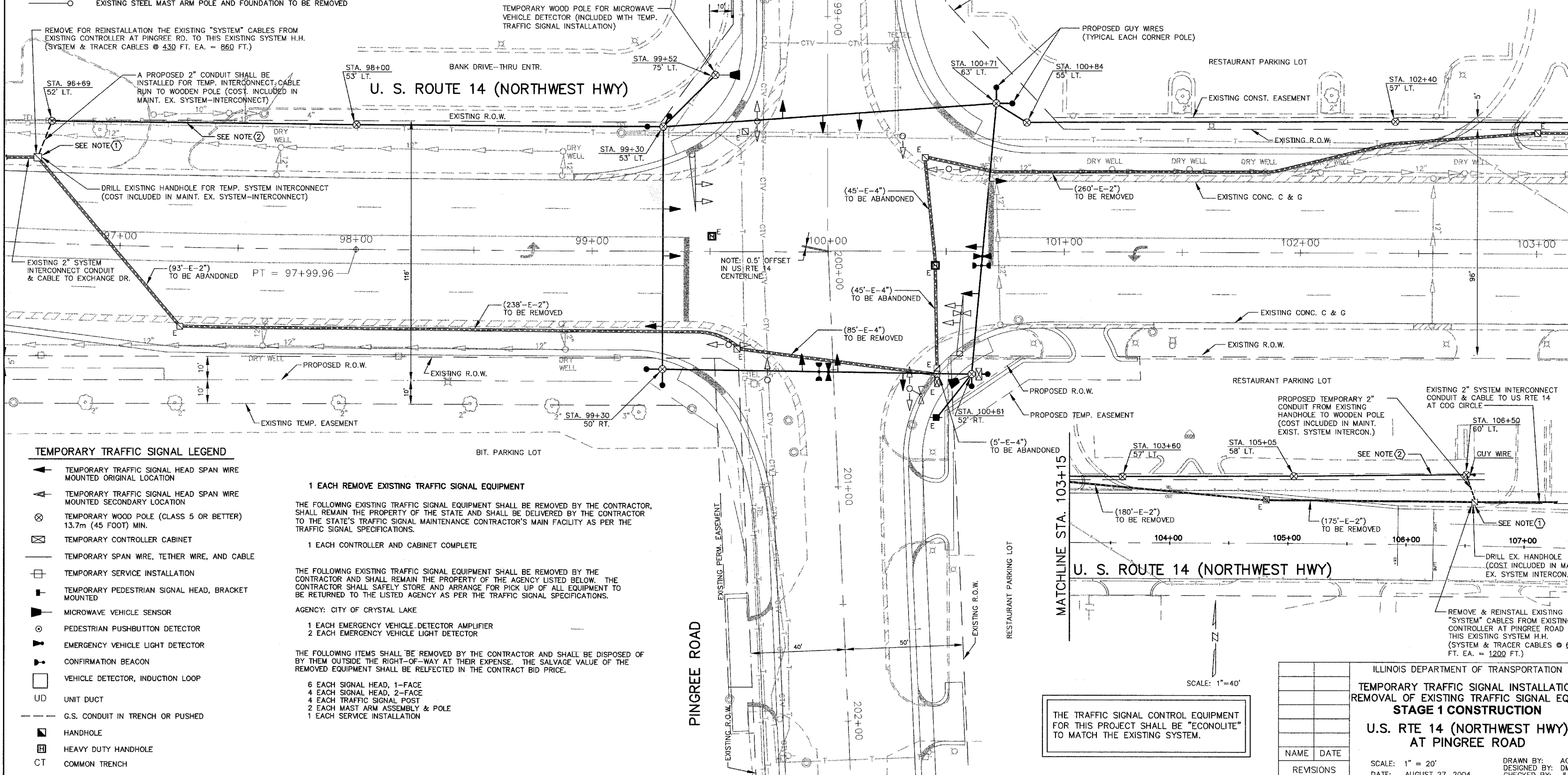
F.A.U. ROUTE	CONTRACT NO.	COUNTY	TOTAL SHTS.
0126	83776	McHENRY	77
STATE SECTION 95-00090-00-FP			
TEMPORARY TRAFFIC SIGNALS			
F.H.W.A. REG. 5 ILLINOIS PROJECT M-8003 (3)			

EXISTING EQUIPMENT TO BE REMOVED LEGEND

- EXISTING SIGNAL HEAD TO BE REMOVED
- EXISTING SERVICE INSTALLATION TO BE REMOVED
- EXISTING SIGNAL POST AND FOUNDATION TO BE REMOVED
- EXISTING ALUMINUM MAST ARM POLE AND FOUNDATION TO BE REMOVED
- EXISTING CONTROLLER AND FOUNDATION TO BE REMOVED
- EXISTING HANDHOLE TO BE REMOVED
- EXISTING PEDESTRIAN SIGNAL HEAD TO BE REMOVED
- EXISTING PEDESTRIAN PUSHBUTTON TO BE REMOVED
- EMERGENCY VEHICLE LIGHT DETECTOR TO BE REMOVED
- CONFIRMATION BEACON TO BE REMOVED
- EXISTING HEAVY-DUTY HANDHOLE TO BE REMOVED
- EXISTING STEEL MAST ARM POLE AND FOUNDATION TO BE REMOVED

CONSTRUCTION NOTES

- 1 BOTH THE EXISTING FIBER-OPTIC INTERCONNECT CABLE AND THE TRACER CABLE SHALL BE PULLED BACK TO THIS HANDHOLE AND STORED/PROTECTED FOR REINSTALLATION IN NEW CONDUITS OF PERMANENT SIGNALS. THIS WORK SHALL BE INCLUDED IN "MAINTAIN EXISTING SYSTEM INTERCONNECT".
- 2 CONTRACTOR SHALL PROVIDE A TEMP. FIBER-OPTIC CABLE ON WOOD POLES FROM PROPOSED TEMP. CONTROLLER CABINET TO EXISTING "SYSTEM" HANDHOLE. A TEMPORARY CABLE SPLICE WILL BE PERMITTED ONLY TO THE EXISTING END OF THE ORIGINAL INTERCONNECT CABLE AS STORED AT THE HANDHOLE. THIS WORK SHALL BE INCLUDED IN ITEM FOR "MAINTAIN EXISTING SYSTEM INTERCONNECT".



TEMPORARY TRAFFIC SIGNAL LEGEND

- TEMPORARY TRAFFIC SIGNAL HEAD SPAN WIRE MOUNTED ORIGINAL LOCATION
- TEMPORARY TRAFFIC SIGNAL HEAD SPAN WIRE MOUNTED SECONDARY LOCATION
- TEMPORARY WOOD POLE (CLASS 5 OR BETTER) 13.7m (45 FOOT) MIN.
- TEMPORARY CONTROLLER CABINET
- TEMPORARY SPAN WIRE, TETHER WIRE, AND CABLE
- TEMPORARY SERVICE INSTALLATION
- TEMPORARY PEDESTRIAN SIGNAL HEAD, BRACKET MOUNTED
- MICROWAVE VEHICLE SENSOR
- PEDESTRIAN PUSHBUTTON DETECTOR
- EMERGENCY VEHICLE LIGHT DETECTOR
- CONFIRMATION BEACON
- VEHICLE DETECTOR, INDUCTION LOOP
- UNIT DUCT
- G.S. CONDUIT IN TRENCH OR PUSHED
- HANDHOLE
- HEAVY DUTY HANDHOLE
- COMMON TRENCH

1 EACH REMOVE EXISTING TRAFFIC SIGNAL EQUIPMENT

THE FOLLOWING EXISTING TRAFFIC SIGNAL EQUIPMENT SHALL BE REMOVED BY THE CONTRACTOR, SHALL REMAIN THE PROPERTY OF THE STATE AND SHALL BE DELIVERED BY THE CONTRACTOR TO THE STATE'S TRAFFIC SIGNAL MAINTENANCE CONTRACTOR'S MAIN FACILITY AS PER THE TRAFFIC SIGNAL SPECIFICATIONS.

1 EACH CONTROLLER AND CABINET COMPLETE

THE FOLLOWING EXISTING TRAFFIC SIGNAL EQUIPMENT SHALL BE REMOVED BY THE CONTRACTOR AND SHALL REMAIN THE PROPERTY OF THE AGENCY LISTED BELOW. THE CONTRACTOR SHALL SAFELY STORE AND ARRANGE FOR PICK UP OF ALL EQUIPMENT TO BE RETURNED TO THE LISTED AGENCY AS PER THE TRAFFIC SIGNAL SPECIFICATIONS.

AGENCY: CITY OF CRYSTAL LAKE

1 EACH EMERGENCY VEHICLE DETECTOR AMPLIFIER
2 EACH EMERGENCY VEHICLE LIGHT DETECTOR

THE FOLLOWING ITEMS SHALL BE REMOVED BY THE CONTRACTOR AND SHALL BE DISPOSED OF BY THEM OUTSIDE THE RIGHT-OF-WAY AT THEIR EXPENSE. THE SALVAGE VALUE OF THE REMOVED EQUIPMENT SHALL BE REFLECTED IN THE CONTRACT BID PRICE.

6 EACH SIGNAL HEAD, 1-FACE
4 EACH SIGNAL HEAD, 2-FACE
4 EACH TRAFFIC SIGNAL POST
2 EACH MAST ARM ASSEMBLY & POLE
1 EACH SERVICE INSTALLATION

THE TRAFFIC SIGNAL CONTROL EQUIPMENT FOR THIS PROJECT SHALL BE "ECONOLITE" TO MATCH THE EXISTING SYSTEM.

ILLINOIS DEPARTMENT OF TRANSPORTATION	
TEMPORARY TRAFFIC SIGNAL INSTALLATION	
REMOVAL OF EXISTING TRAFFIC SIGNAL EQUIPMENT	
STAGE 1 CONSTRUCTION	
U.S. RTE 14 (NORTHWEST HWY) AT PINGREE ROAD	
NAME	DATE
REVISIONS	
SCALE: 1" = 20'	DRAWN BY: AC
DATE: AUGUST 27, 2004	DESIGNED BY: DM
	CHECKED BY: JL