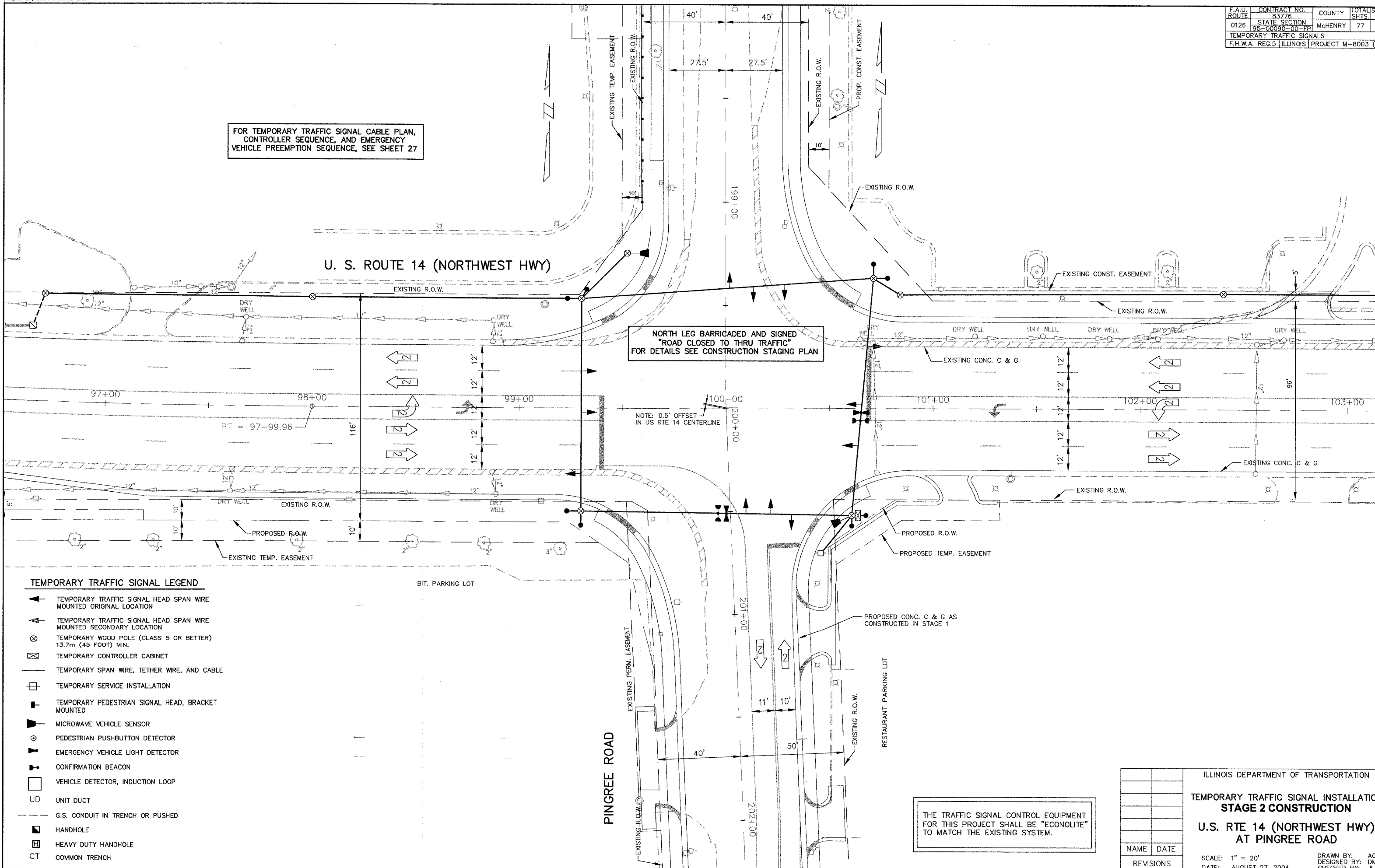


FOR TEMPORARY TRAFFIC SIGNAL CABLE PLAN, CONTROLLER SEQUENCE, AND EMERGENCY VEHICLE PREEMPTION SEQUENCE, SEE SHEET 27



NORTH LEG BARRICADED AND SIGNED
"ROAD CLOSED TO THRU TRAFFIC"
FOR DETAILS SEE CONSTRUCTION STAGING PLAN

NOTE: 0.5' OFFSET
IN US RTE 14 CENTERLINE

THE TRAFFIC SIGNAL CONTROL EQUIPMENT FOR THIS PROJECT SHALL BE "ECONOLITE" TO MATCH THE EXISTING SYSTEM.

TEMPORARY TRAFFIC SIGNAL LEGEND

- ◄ TEMPORARY TRAFFIC SIGNAL HEAD SPAN WIRE MOUNTED ORIGINAL LOCATION
- ◄ TEMPORARY TRAFFIC SIGNAL HEAD SPAN WIRE MOUNTED SECONDARY LOCATION
- ⊗ TEMPORARY WOOD POLE (CLASS 5 OR BETTER) 13.7m (45 FOOT) MIN.
- ⊠ TEMPORARY CONTROLLER CABINET
- TEMPORARY SPAN WIRE, TETHER WIRE, AND CABLE
- ⊕ TEMPORARY SERVICE INSTALLATION
- TEMPORARY PEDESTRIAN SIGNAL HEAD, BRACKET MOUNTED
- ▲ MICROWAVE VEHICLE SENSOR
- ⊙ PEDESTRIAN PUSHBUTTON DETECTOR
- ▼ EMERGENCY VEHICLE LIGHT DETECTOR
- ▶ CONFIRMATION BEACON
- VEHICLE DETECTOR, INDUCTION LOOP
- UD UNIT DUCT
- G.S. CONDUIT IN TRENCH OR PUSHED
- HANDHOLE
- ⊠ HEAVY DUTY HANDHOLE
- CT COMMON TRENCH

ILLINOIS DEPARTMENT OF TRANSPORTATION	
TEMPORARY TRAFFIC SIGNAL INSTALLATION STAGE 2 CONSTRUCTION	
U.S. RTE 14 (NORTHWEST HWY) AT PINGREE ROAD	
NAME	DATE
REVISIONS	

SCALE: 1" = 20'
DATE: AUGUST 27, 2004

DRAWN BY: AC
DESIGNED BY: DM
CHECKED BY: JL