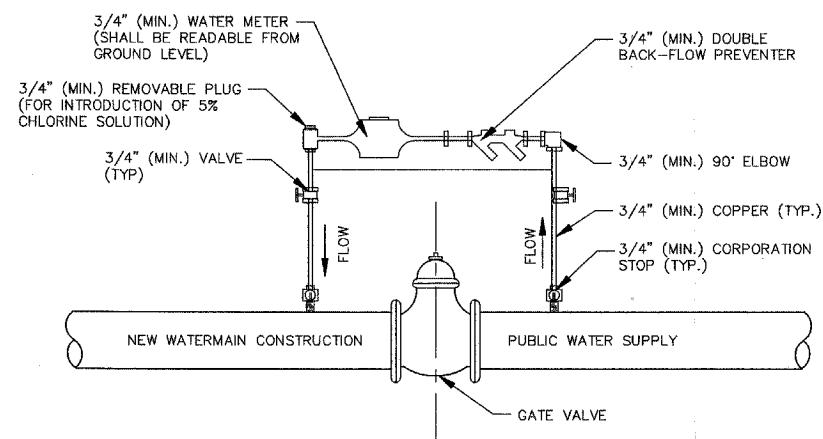
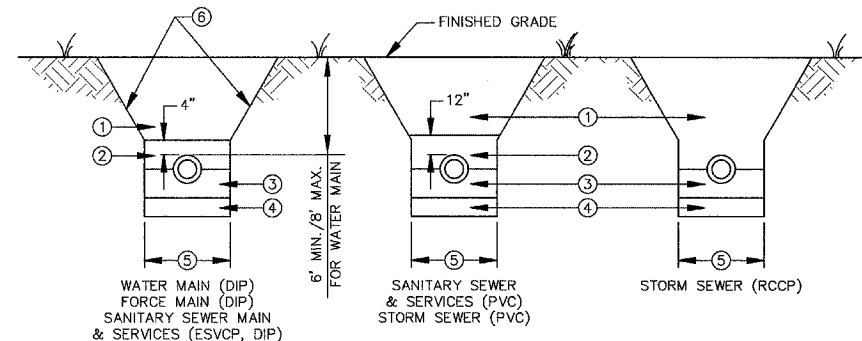


CURB AND GUTTER TRANSITION DETAIL
(N.T.S.)

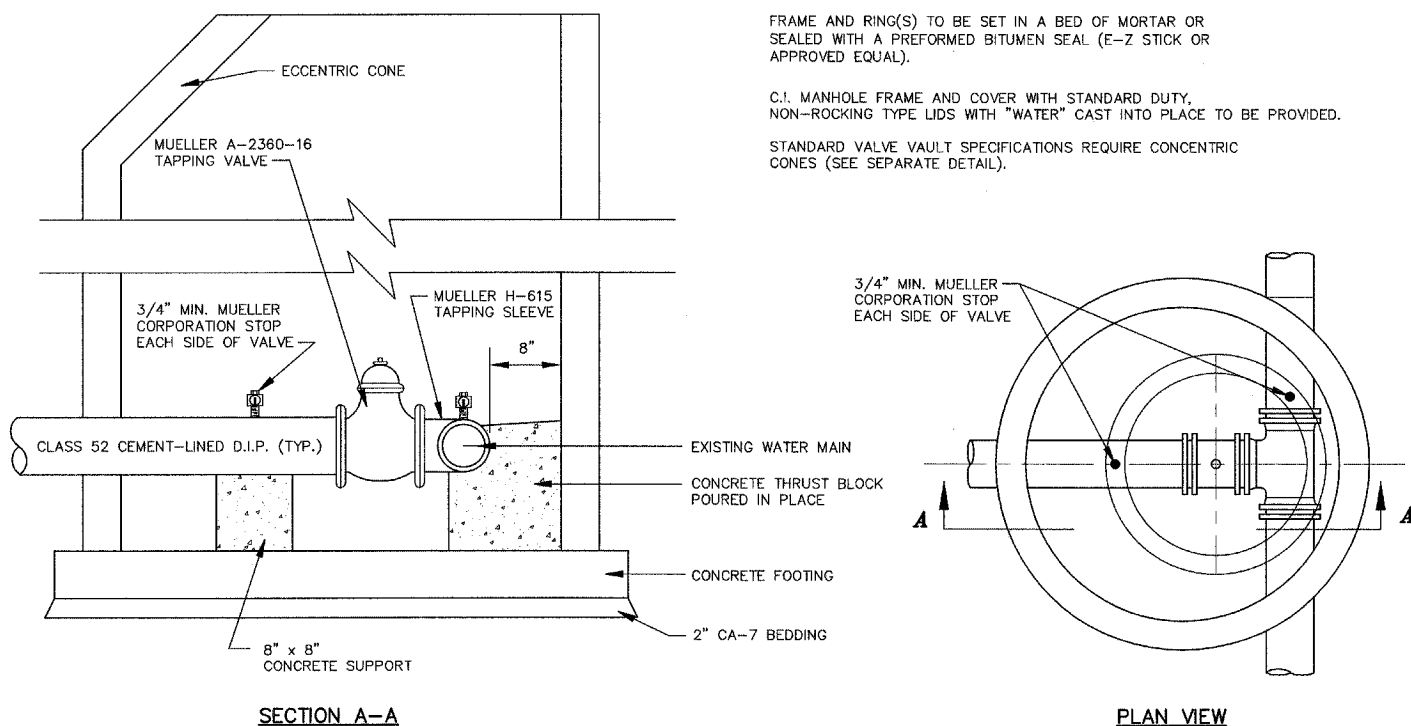


STANDARD WATER VALVE JUMPER DETAIL
(N.T.S.)

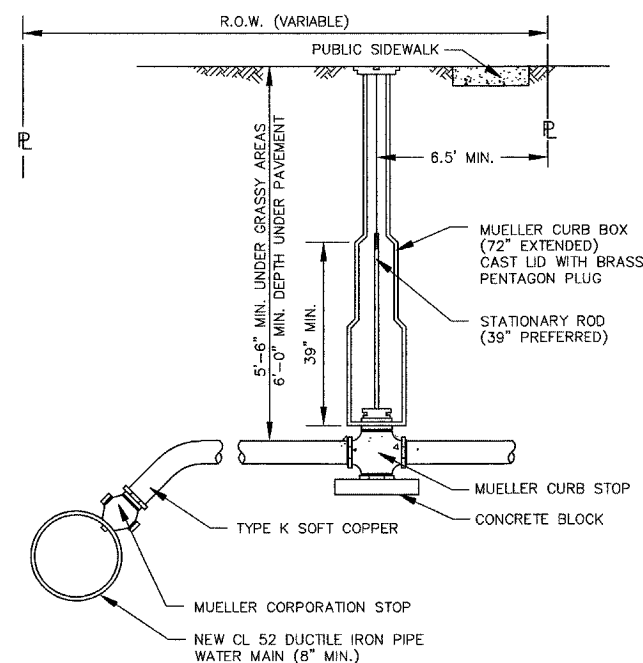


- TRENCH BACKFILL TO SUBGRADE AND WITHIN 2' OF PROPOSED PAVEMENT, CURB AND GUTTER OR SIDEWALK. TRENCH BACKFILL MATERIAL SHALL BE IDOT APPROVED GRADATION CA-6, CRUSHED STONE OR GRUSHED GRAVEL COMPACTED TO 90% OF MODIFIED PROCTOR DENSITY. ALTERNATE TRENCH BACKFILL SPECIFICATIONS REQUIRE APPROVAL OF THE CITY ENGINEER. IN NON-STRUCTURAL AREAS, BACKFILL WITH APPROVED EXCAVATED MATERIALS.
- INITIAL BACKFILL TO DEPTH AS INDICATED. MATERIAL SHALL BE IDOT APPROVED GRADATION CA-6, CRUSHED STONE OR GRAVEL INCLUDED IN TRENCH BACKFILL QUANTITY AT STRUCTURAL OR NON-STRUCTURAL AREAS.
- PIPE BEDDING SHALL BE ANGULAR GRANULAR MATERIAL IDOT GRADATION CA-7 OR CA-11 FROM 4" BELOW PIPE TO HORIZONTAL CENTER OF PIPE.
- UNSUITABLE MATERIAL TO BE REMOVED WHERE DIRECTED BY THE ENGINEER AND REPLACED WITH COMPACTED SUITABLE MATERIAL.
- TRENCH WIDTH: PIPE O.D. + 18", WHEN TRENCH ≤ 5'-0"
PIPE O.D. + 36", WHEN TRENCH > 5'-0"
- CONTRACTOR SHALL COMPLY WITH THE LATEST OSHA STANDARDS INCLUDING, BUT NOT LIMITED TO: SLOPING AND BENCHING TRENCH WALLS, TRENCH SUPPORT AND SHORING SYSTEMS, SHIELD SYSTEMS, AND HAZARDOUS ATMOSPHERES.

TYPICAL TRENCH CROSS SECTION
(N.T.S.)



WATER MAIN PRESSURE CONNECTION DETAIL
(N.T.S.)



WATER SERVICE INSTALLATION DETAIL
(N.T.S.)

PART DESCRIPTION	MUELLER CAT. NO.	SERVICE SIZE	MAIN SIZE	INLET		OUTLET	
				AWWA TAPER	COMP	AWWA TAPER	COMP
CORP STOP	H-15013	1 1/2"-2"	8"+	X	X		X
	H015008	3/4"-1"	8"+	X	X		X
DOUBLE STRAP BRASS SERVICE SADDLE	H-16123	1 1/2"-2"	4"			X	
	H-16126	1 1/4"-2"	6"			X	
	H-16130	1 1/4"-2"	8"			X	
	H-16134	1 1/2"-2"	10"			X	
	H-16137	1 1/4"-2"	12"			X	
CURB STOP	H-15155	3/4"-2"			X		X
	H-25155	1 1/4"-2"			X		X
CURB BOX	H-10300	3/4"-1 1/2"					
	H-10300-99002	2"					
STATIONARY ROD	84247	1 1/4"					
	84338	1 1/2"					
	84139	2"					

- NO CORPORATION STOPS, COPPER SERVICE, OR CURB BOXES MAY BE LOCATED UNDER PAVED AREAS INCLUDING DRIVES AND SIDEWALKS.
- ALL WATER MAIN HARDWARE SHALL BE MUELLER.
- SERVICE TO BE CONTINUOUS WITHOUT JOINTS FROM CORPORATION STOP TO CURB STOP.
- MULTIPLE TAPS INTO MAIN SHALL BE NO CLOSER THAN 2' APART.
- TRENCH FROM MAIN TO BACK OF SIDEWALK TO BE COMPACTED TRENCH BACKFILL.
- NO FLARE FITTINGS WILL BE ACCEPTED
- ALL ADJUSTMENTS TO TO BE MADE WITH GALVANIZED PIPE AND COUPLINGS (SCREWED ON)