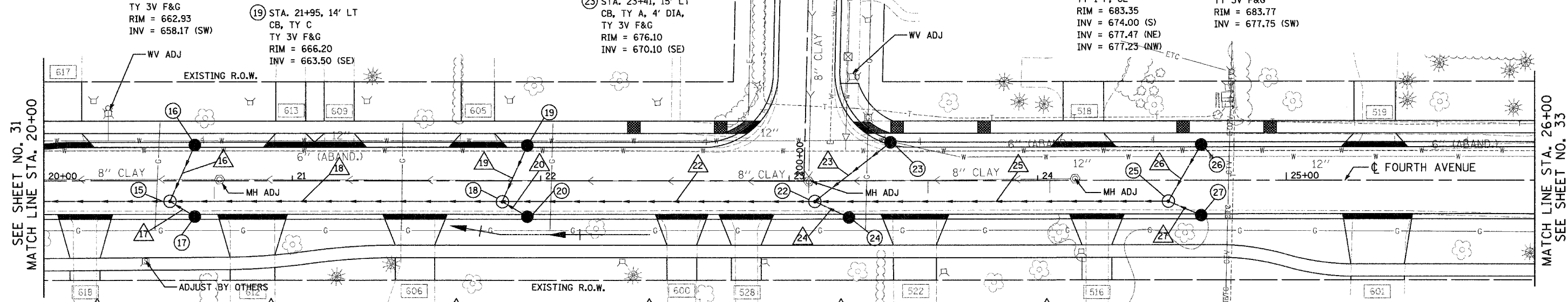


F.A.U. RTE.	SECTION	COUNTY	TOTAL SHEETS	SHEET NO.
2670	03-00095-00-RS	LAKE	67	32
STA. 20+00		TO STA. 26+00		
FED. ROAD DIST. NO. 1		ILLINOIS		
		STPM - 8003 (442)		
		CONTRACT NO.: 83784		

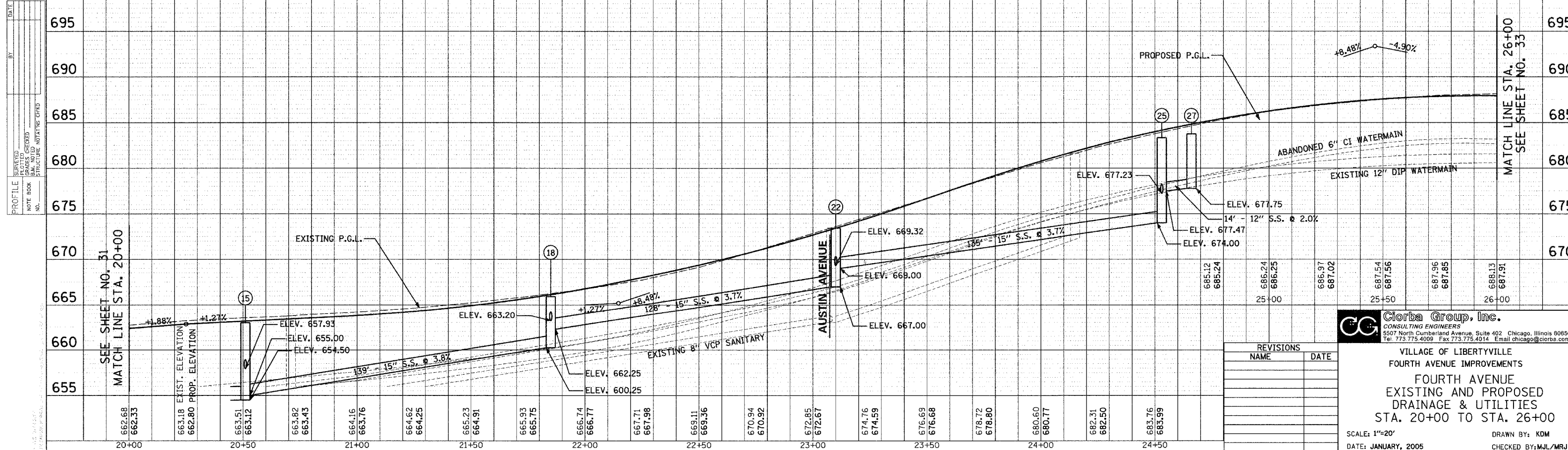
- 15 STA. 20+51, 8' RT  
MH, TY A, 4' DIA,  
TY 1 F, CL  
RIM = 662.96  
INV = 655.00 (N)  
INV = 654.50 (S)  
INV = 657.93 (NE)  
INV = 657.93 (NW)
- 16 STA. 20+61, 14' LT  
CB, TY A, 4' DIA,  
TY 3V F&G  
RIM = 662.93  
INV = 658.43 (SE)
- 17 STA. 20+61, 14' RT  
CB, TY A, 4' DIA,  
TY 3V F&G  
RIM = 662.93  
INV = 658.17 (SW)
- 18 STA. 21+85, 8' RT  
MH, TY A, 4' DIA,  
TY 1 F, CL  
RIM = 665.93  
INV = 662.25 (N)  
INV = 660.25 (S)  
INV = 663.20 (NE)  
INV = 663.00 (NW)
- 19 STA. 21+95, 14' LT  
CB, TY C  
TY 3V F&G  
RIM = 666.20  
INV = 663.50 (SE)
- 20 STA. 21+95, 14' RT  
CB, TY A, 4' DIA,  
TY 3V F&G  
RIM = 666.22  
INV = 663.50 (SW)  
INV = 663.58 (SE)
- 21 NOT USED
- 22 STA. 23+10, 8' RT  
MH, TY A, 5' DIA,  
TY 1 F, CL  
RIM = 673.42  
INV = 669.00 (N)  
INV = 667.00 (S)  
INV = 669.32 (NE)  
INV = 669.32 (NW)
- 23 STA. 23+41, 15' LT  
CB, TY A, 4' DIA,  
TY 3V F&G  
RIM = 676.10  
INV = 670.10 (SE)
- 24 STA. 23+24, 15' RT  
CB, TY A, 4' DIA,  
TY 3V F&G  
RIM = 674.31  
INV = 669.47 (SW)
- 25 STA. 24+53, 8' RT  
MH, TY A, 4' DIA,  
TY 1 F, CL  
RIM = 683.35  
INV = 674.00 (S)  
INV = 677.47 (NE)  
INV = 677.23 (NW)
- 26 STA. 24+66, 14' LT  
CB, TY A, 4' DIA,  
TY 3V F&G  
RIM = 683.77  
INV = 677.75 (SE)
- 27 STA. 24+66, 14' RT  
CB, TY A, 4' DIA,  
TY 3V F&G  
RIM = 683.77  
INV = 677.75 (SW)



- 16 12" SS WATER MAIN REQUIREMENTS  
25' @ 2.0%  
TBF = 16.47 CY
- 17 12" SS 2 RCP CL 3  
12' @ 2.0%  
TBF = 8.15 CY
- 18 15" SS 2 RCP CL 3  
139' @ 3.8%  
TBF = 142.17 CY
- 19 12" SS WATER MAIN REQUIREMENTS  
25' @ 2.0%  
TBF = 5.43 CY
- 20 12" SS 1 RCP CL 4  
12' @ 2.5%  
TBF = 2.49 CY
- 21 NOT USED
- 22 15" SS 2 RCP CL 3  
128' @ 3.7%  
TBF = 92.11 CY
- 23 12" SS WATER MAIN REQUIREMENTS  
39' @ 2.0%  
TBF = 27.47 CY
- 24 12" SS 2 RCP CL 3  
15' @ 1.0%  
TBF = 5.86 CY
- 25 15" SS 2 RCP CL 3  
135' @ 3.7%  
TBF = 139.23 CY
- 26 12" SS WATER MAIN REQUIREMENTS  
26' @ 2.0%  
TBF = 22.47 CY
- 27 12" SS 2 RCP CL 3  
14' @ 2.0%  
TBF = 11.83 CY

NOTE: ONLY CA-6 WILL BE ALLOWED FOR TRENCH BACKFILL MATERIAL.

### FOURTH AVENUE



REVISIONS	
NAME	DATE

**Giorba Group, Inc.**  
CONSULTING ENGINEERS  
5507 North Cumberland Avenue, Suite 402 Chicago, Illinois 60658  
Tel: 773.775.4009 Fax: 773.775.4014 Email: chicago@giorba.com

VILLAGE OF LIBERTYVILLE  
FOURTH AVENUE IMPROVEMENTS  
FOURTH AVENUE  
EXISTING AND PROPOSED  
DRAINAGE & UTILITIES  
STA. 20+00 TO STA. 26+00

SCALE: 1"=20'  
DATE: JANUARY, 2005

DRAWN BY: KOM  
CHECKED BY: MJL/MRJ

PLAN SURVEYED PLOTTED CHECKED  
NOTE BOOK NO. DATE  
BY: DATE

PROFILE SURVEYED PLOTTED CHECKED  
NOTE BOOK NO. DATE  
BY: DATE

SEE SHEET NO. 31  
MATCH LINE STA. 20+00

MATCH LINE STA. 26+00  
SEE SHEET NO. 33