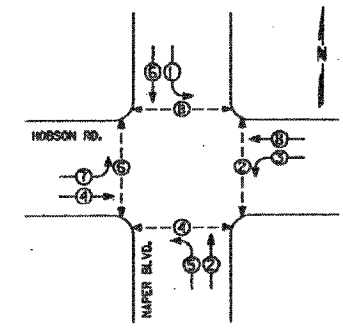


F.A. RTE.	SECTION	COUNTY	TOTAL SHEETS	SHEET NO.
P856	04-00128-00-TL	DUPAGE	21	8
STA.	TO STA.			
FED. ROAD DIST. NO.	ILLINOIS	FED. AID PROJECT		
CONTRACT NO. 83793				

EARTH TECH
A TYLINT INTERNATIONAL LTD. COMPANY

COUNTY HIGHWAY	FISCAL YEAR	TOTAL SHEETS	SHEET NO.
2	2002	21	T9
SECTION 95-0046-00-FP		DUPAGE COUNTY	
CABLE PLAN HOBSON ROAD & NAPER BLVD.			

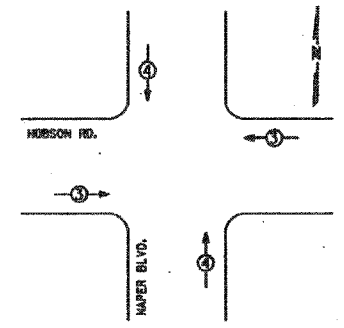
CONTROLLER SEQUENCE



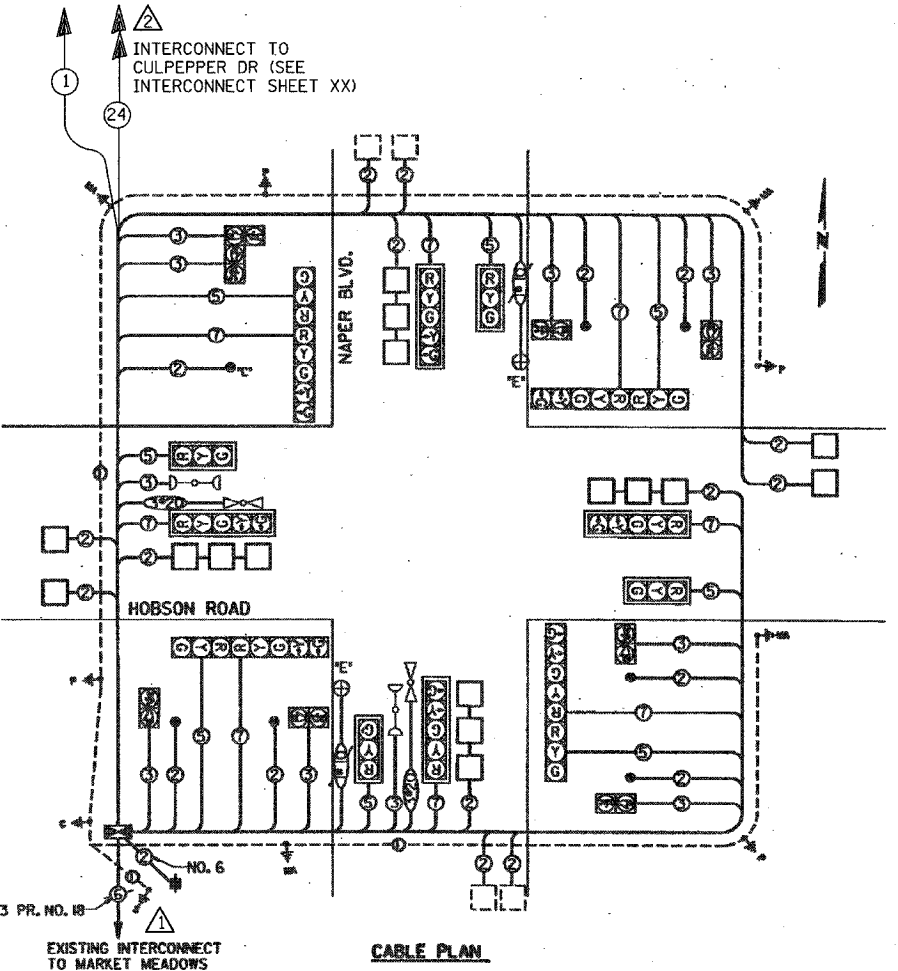
LEGEND
 ← ○ → VEHICULAR MOVEMENT
 ← ○ → PEDESTRIAN MOVEMENT
 * NUMBER REFERS TO ASSOCIATED PHASE

PHASE DESIGNATION DIAGRAM

EMERGENCY VEHICLE PREEMPTION SEQUENCE



EMERGENCY VEHICLE PREEMPTOR	3	4
MOVEMENT	← →	↑ ↓



CABLE PLAN LEGEND

- | | | |
|----------|----------|---|
| EXISTING | PROPOSED | |
| | | 12" TRAFFIC SIGNAL SECTION |
| | | 12" PEDESTRIAN SIGNAL SECTION |
| | | 12" PEDESTRIAN SIGNAL SECTION |
| | | CONTROLLER CABINET |
| | | SERVICE INSTALLATION |
| | | VEHICLE DETECTOR, INDUCTION LOOP |
| | | EMERGENCY VEHICLE LIGHT DETECTOR |
| | | CONFIRMATION BEACON |
| | | PUSHBUTTON DETECTOR |
| | | DENOTES NUMBER OF CONDUCTORS. ALL CABLE NO. 14 EXCEPT AS INDICATED. ALL LOOP DETECTOR CABLE TO BE SHIELDED. |
| | | SIGNAL FACE WITH BACKPLATE. "P" INDICATES PROGRAMMED HEAD. |
| | | GROUND ROD AT HANDHOLE, DOUBLE HANDHOLE OR CONTROLLER |
| | | GROUND ROD AT POST OR MAST ARM POLE |
| | | GROUND ROD AT ELECTRIC SERVICE INSTALLATION |
| | | GROUND CABLE IN CONDUIT NO. 6 SOLID COPPER (GREEN) EXCEPT AS INDICATED |
| | | FIBER OPTIC CABLE IN CONDUIT NO. 62.5/125 2-MM2F & SM2F |
| | | STREET LIGHTING |

LEGEND

- PROPOSED FIBER OPTIC CABLE IN CONDUIT, NO. 62.5/125, MM12F SM12F
- PROPOSED ELECTRIC CABLE, 1/C (AS SPECIFIED)

NOTE:
PLANS ARE BASED ON EXISTING "AS-BUILT" DRAWINGS. FIELD CONDITIONS MAY VARY FROM THOSE SHOWN

MODIFIED BY OTHERS IN 2002 INTERCONNECT CHANGED TO 62.5/125 MM 12F & SM 12F WITH TRACER CABLE

INSTALLATION OF FIBER OPTIC INTERCONNECT TO NORTH ON NAPER BLVD. HOBSON TO DUNROBIN

TRAFFIC SIGNAL INSTALLATION ELECTRICAL SERVICE REQUIREMENTS				TOTAL RATING
TYPE	NO. LAMPS	DURATION	% OPERATION	
SIGNAL (RED)	16	125	0.50	1960.00
SIGNAL (YELLOW)	16	125	0.25	540.00
SIGNAL (GREEN)	16	125	0.25	540.00
ARROW	16	125	0.10	216.00
TRAFFIC SIGNAL CONTROLLER	8	90	1.00	720.00
BLANK SIGN	1	100	0.05	100.00
FLASHER			0.50	
TOTAL *				3196.00

FOUNDATION DEPTH	METERS	CABLE SLACK	METERS	VERTICAL	METERS
TYPE A - HIGH	1.0	1.0	2.0	ALL UTILIZATION	5.12
B - CONTROLLED	1.0	1.0	2.0	POST ARM MAST POLE	1.0
C - MAST ARM	1.0	1.0	2.0	POST ARM MAST POLE	1.0
D - MAST ARM	1.0	1.0	2.0	POST ARM MAST POLE	1.0
E - MAST ARM	1.0	1.0	2.0	POST ARM MAST POLE	1.0
F - MAST ARM	1.0	1.0	2.0	POST ARM MAST POLE	1.0
G - MAST ARM	1.0	1.0	2.0	POST ARM MAST POLE	1.0
H - MAST ARM	1.0	1.0	2.0	POST ARM MAST POLE	1.0
I - MAST ARM	1.0	1.0	2.0	POST ARM MAST POLE	1.0
J - MAST ARM	1.0	1.0	2.0	POST ARM MAST POLE	1.0
K - MAST ARM	1.0	1.0	2.0	POST ARM MAST POLE	1.0
L - MAST ARM	1.0	1.0	2.0	POST ARM MAST POLE	1.0
M - MAST ARM	1.0	1.0	2.0	POST ARM MAST POLE	1.0
N - MAST ARM	1.0	1.0	2.0	POST ARM MAST POLE	1.0
O - MAST ARM	1.0	1.0	2.0	POST ARM MAST POLE	1.0
P - MAST ARM	1.0	1.0	2.0	POST ARM MAST POLE	1.0
Q - MAST ARM	1.0	1.0	2.0	POST ARM MAST POLE	1.0
R - MAST ARM	1.0	1.0	2.0	POST ARM MAST POLE	1.0
S - MAST ARM	1.0	1.0	2.0	POST ARM MAST POLE	1.0
T - MAST ARM	1.0	1.0	2.0	POST ARM MAST POLE	1.0
U - MAST ARM	1.0	1.0	2.0	POST ARM MAST POLE	1.0
V - MAST ARM	1.0	1.0	2.0	POST ARM MAST POLE	1.0
W - MAST ARM	1.0	1.0	2.0	POST ARM MAST POLE	1.0
X - MAST ARM	1.0	1.0	2.0	POST ARM MAST POLE	1.0
Y - MAST ARM	1.0	1.0	2.0	POST ARM MAST POLE	1.0
Z - MAST ARM	1.0	1.0	2.0	POST ARM MAST POLE	1.0

CABLE PLAN
PUSHBUTTON "C" PLACES A CALL IN PEDESTRIAN MOVEMENT 6 AND 8.

CABLE PLAN, PHASE DESIGNATION DIAGRAM, SCHEDULE DEVIATIONS

NAME	DATE

ILLINOIS DEPARTMENT OF TRANSPORTATION
NAPER BOULEVARD INTERCONNECT
**HOBSON ROAD
CABLE PLAN**

SCALE: NTS
DATE
DRAWN BY: JS
CHECKED BY: DJ

TYLINT INTERNATIONAL

PLOT DATE = #DATE#
FILE NAME = #FILE#
PLOT SCALE = #SCALE#
REFERENCE = #REF#