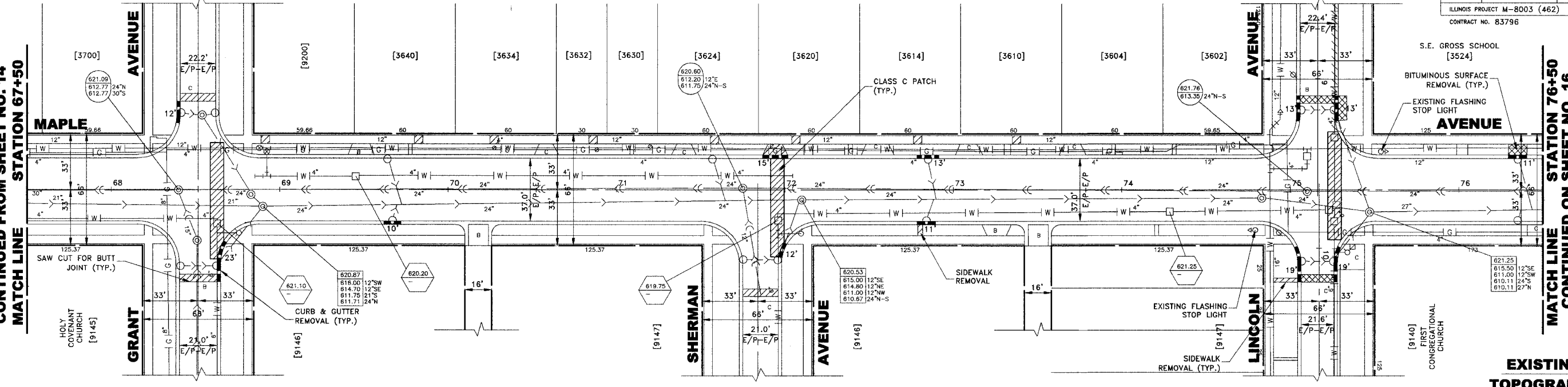


CONTINUED FROM SHEET NO. 14  
MATCH LINE STATION 67+50

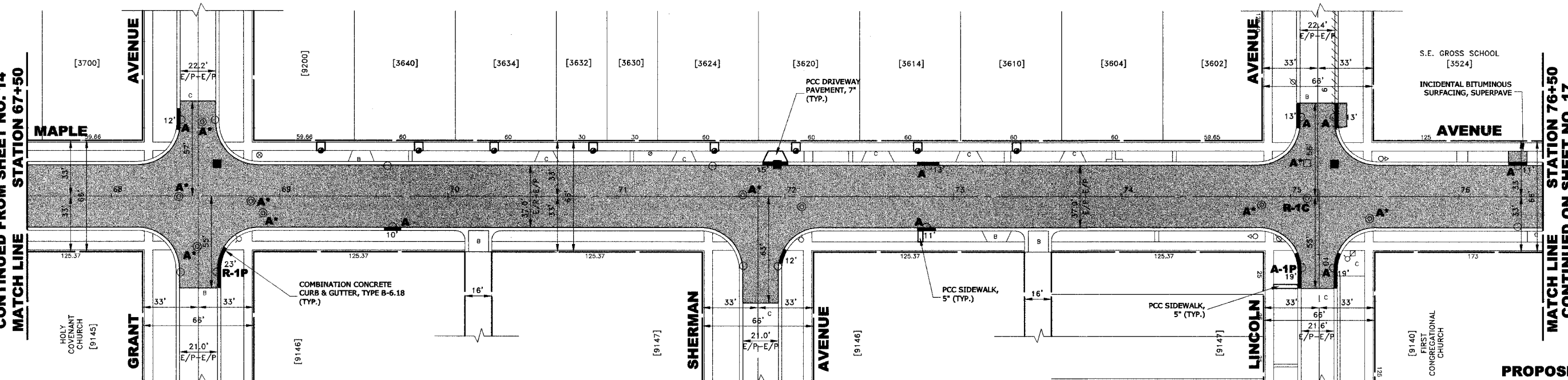
MATCH LINE STATION 76+50  
CONTINUED ON SHEET NO. 16



**EXISTING TOPOGRAPHY**

CONTINUED FROM SHEET NO. 14  
MATCH LINE STATION 67+50

MATCH LINE STATION 76+50  
CONTINUED ON SHEET NO. 17



**PROPOSED IMPROVEMENT**

622																						622	
620	EXISTING CENTER LINE																				620		
618																					618		
616																					616		
614	620.64	620.57	620.45	620.56	620.57	620.40	620.53	620.62	620.45	620.62	621.03	621.60	621.67	621.56	621.67	621.56	621.67	621.56	621.67	621.56	621.67	621.56	614
	+50	68+06	69+00	+65	70+00	+30	71+00	+40	+83.92	72+40	73+00	74+00	75+00	+65	76+00	+50	STA						

**HANCOCK ENGINEERING**  
 ♦ Civil Engineers  
 ♦ Municipal Consultants  
 ♦ Established 1911

9933 Roosevelt Road  
Westchester, Illinois 60154-2780  
Phone: 708/865-0300  
Fax: 708/865-1212

**MAPLE AVENUE IMPROVEMENTS**  
**VILLAGE OF BROOKFIELD, ILLINOIS**

**MAPLE AVENUE**  
**PAVING IMPROVEMENTS**

REVISION:		SCALE: 1"=30'H. & 1"=2'V
		DRAWN BY: LEV/DMM/MK
		BOOK NO.: 997/BP/LS
		DATE: 4-12-05
		E.H.E. NO.: 125-04-25005

SHEET  
**15**  
**34**