

F.A.U. RTE.	SECTION	COUNTY	TOTAL SHEETS	SHEET NO.
2556	00-00070-00-FP	COOK	98	1
FED. ROAD DIST. NO. 1		ILLINOIS	FED. AID PROJECT	

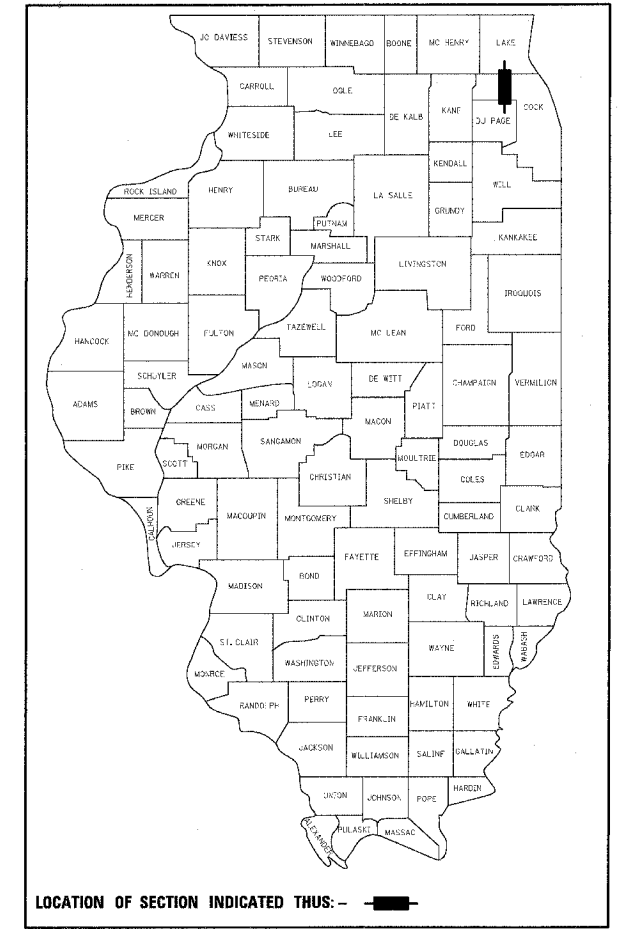
CONTRACT No. 83799

INDEX OF SHEETS

SHEET NO.	DESCRIPTION
1	TITLE SHEET
2	LIST OF STATE STANDARDS
3	GENERAL NOTES
4 - 5	SUMMARY OF QUANTITIES
6 - 7	TYPICAL SECTIONS
8	ALIGNMENT, TIES AND BENCHMARKS
9	DETOUR PLAN AND CONSTRUCTION STAGING
10 - 16	EXISTING CONDITIONS & REMOVAL PLANS
17 - 30	PLAN AND PROFILE
31	INTERSECTION DETAIL PLAN
32 - 38	LANDSCAPING AND EROSION CONTROL PLANS
39 - 52	TRAFFIC SIGNAL PLANS & INTERCONNECT PLANS
53 - 54	PAVEMENT MARKING AND SIGNING PLANS
55 - 56	CONSTRUCTION DETAILS
57 - 98	CROSS SECTIONS

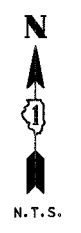
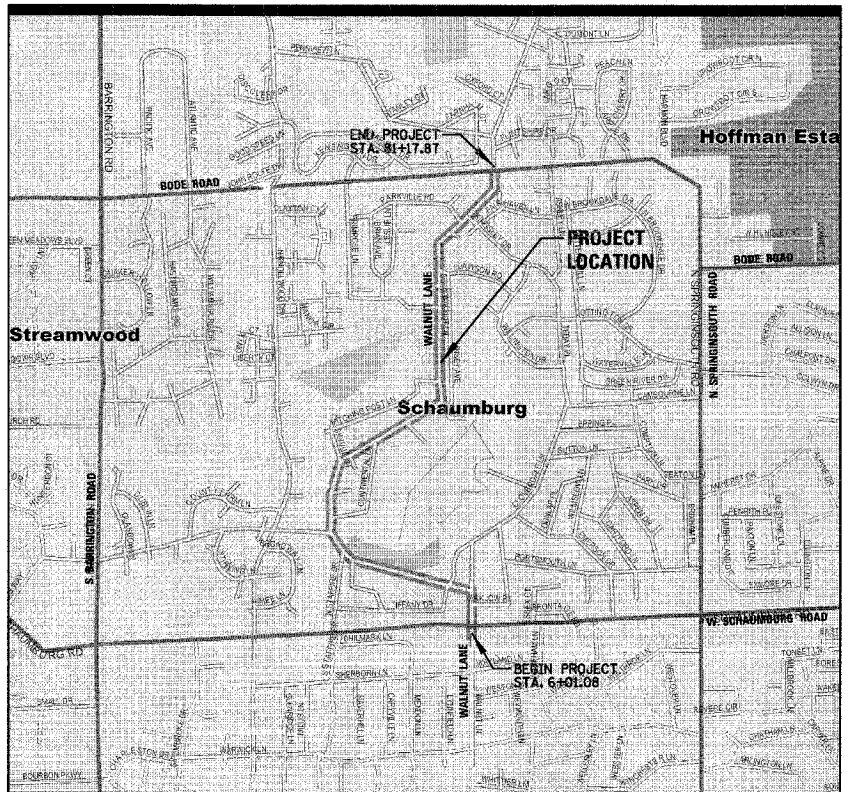
STATE OF ILLINOIS
DEPARTMENT OF TRANSPORTATION
DIVISION OF HIGHWAYS
PLANS FOR PROPOSED
FEDERAL AID HIGHWAY

FAU 2556 (WALNUT LANE)
Section No.: 00-00070-00-FP
SCHAUMBURG ROAD TO BODE ROAD
RECONSTRUCTION
Project No.: M-8003 (362)
COOK COUNTY
C-91-108-04



WALNUT LANE
 Sta. 6+01.08 to Sta. 81+17.87

OMISSION
 Sta. 9+68.90 to Sta. 10+31.33



TRAFFIC DATA
 EXISTING ADT: 2500
 PROPOSED ADT: 3200 (2025)

STATE OF ILLINOIS
 DEPARTMENT OF TRANSPORTATION
 DIVISION OF HIGHWAYS

APPROVED April 7, 2005

 VILLAGE OF SCHAUMBURG

APPROVED April 12, 2005

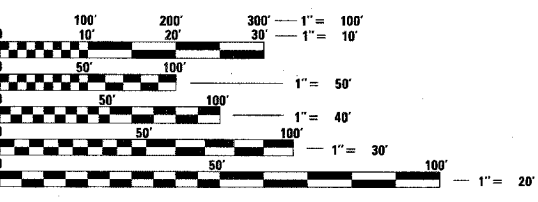
 LOCAL ROADS ENGINEER

APPROVED April 12, 2005

 DISTRICT ENGINEER

POSTED SPEED = 25 MPH
 DESIGN SPEED = 30 MPH

FINAL

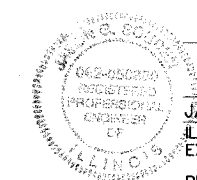


FULL SIZE PLANS HAVE BEEN PREPARED USING STANDARD
 ENGINEERING SCALES. REDUCED SIZED PLANS WILL NOT
 CONFORM TO STANDARD SCALES. IN MAKING MEASUREMENTS
 ON REDUCED PLANS, THE ABOVE SCALES MAY BE USED.

J.U.L.I.E.
 JOINT UTILITY LOCATION INFORMATION FOR EXCAVATION
 1-800-892-0123

CONTRACT NO. 83799

LOCATION MAP
 SCALE: NONE
 GROSS LENGTH OF PROJECT = 7517 LINEAL FEET (1.42 MILES)
 NET LENGTH OF PROJECT = 7453 LINEAL FEET (1.41 MILES)
PROJECT LOCATED IN: VILLAGE OF SCHAUMBURG



April 12, 2005

JASON G. SOUDEN
 ILLINOIS REGISTRATION No. 062-050850 ENGINEER
 EXPIRATION DATE: 11/30/05
 PRINTED BY AUTHORITY OF THE STATE OF ILLINOIS

CHRISTOPHER B. BURKE ENGINEERING LTD.
 9575 West Higgins Road, Suite 600
 Rosemont, Illinois 60018
 (847) 823-0500

FEDERAL AID DESIGN ENGINEER: CHARLES F. RIDDLE
 201 W. CENTER COURT
 SCHAUMBURG, ILLINOIS 60196-1096
 (847) 705-4406