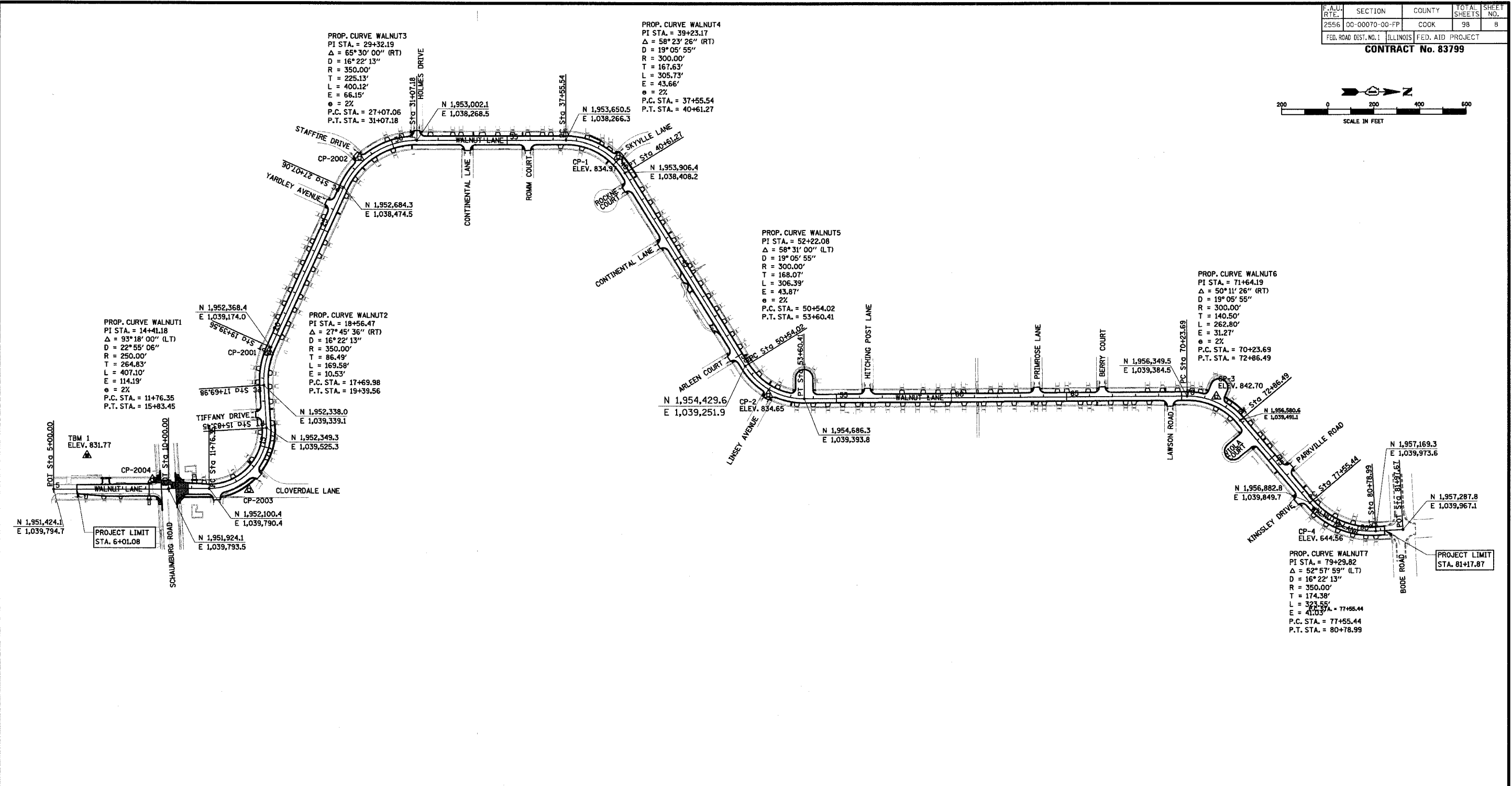
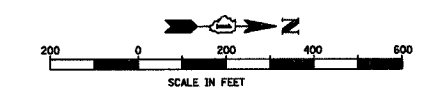


F.A.U. R.T.E.	SECTION	COUNTY	TOTAL SHEETS	SHEET NO.
2556	00-00070-00-PP	COOK	98	8
FED. ROAD DIST. NO. 1		ILLINOIS	FED. AID PROJECT	

CONTRACT No. 83799



HORIZONTAL CONTROL						
NO.	NORTHING	EASTING	ELEV.	DESCR.	STATION	OFFSET
CP-2001	1952359.6	1039195.5	830.83	CP-PK	19+16.26	0.04 RT
CP-2002	1952753.1	1038345.0	830.39	CP-PK	28+49.09	20.8 LT
CP-2003	1952273.6	1039795.8	836.77	CP-IP	13+25.05	59.0 RT
CP-2004	1951853.7	1039754.1	835.79	CP-PK	9+29.74	39.6 LT
CP-1	1953878.1	1038337.5	834.97	CP-PK	39+90.74	22.1 LT
CP-2	1954530.2	1039377.1	834.65	CP-PK	52+08.99	22.6 RT
CP-3	1956476.4	1039387.1	842.70	CP-PK	71+44.96	22.7 RT
CP-4	1957004.2	1039942.8	844.56	CP-PK	79+09.51	0.67 RT

ELEVATION BENCHMARKS		
DATUM: NGVD OF 1929		
NO.	DESCRIPTION	ELEV.
TBM 1	CHISELED BOX CUT ON SW CORNER OF CONC. LIGHT POLE	831.77
	IN CENTER OF PARKING LOT OF SALEM KOREAN V.M.C. CHURCH	
CP-1	PK NAIL IN WALNUT LANE @ 39+90.74 OFFSET 22.1 LT	834.97
CP-2	PK NAIL IN WALNUT LANE @ 52+08.99 OFFSET 22.6 RT	834.65
CP-3	PK NAIL IN WALNUT LANE @ 71+44.96 OFFSET 22.7 LT	842.70
CP-4	PK NAIL IN WALNUT LANE @ 79+09.51 OFFSET 0.67 RT	844.56

CB BURKE CHRISTOPHER B. BURKE ENGINEERING LTD.
 9575 West Higgins Road, Suite 600
 Rosemont, Illinois 60018
 (847) 823-0500

CLIENT: **VILLAGE OF SCHAUMBURG**
 Engineering Department
 101 Schaumburg Court
 Schaumburg, IL. 60193-7806

DSGN.	GS	DATE:	04/05/2005
DWN.	GS		
CHKD.	JGS		
SCALE:	1"=200'		
NO. DATE	NATURE OF REVISION		CHKD.
FILE NAME	N:\SCHAUMBURG\01-434\DESIGN\PROJ01434_BNH.BNH		

TITLE: **ALIGNMENT, TIES AND BENCHMARKS**
C-91-108-04

PROJECT NO.	01-434
SHEET 8 OF 98	
DRAWING NO.	8