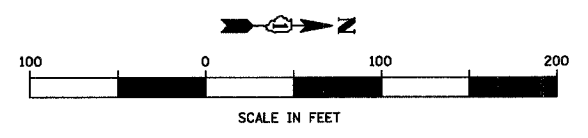
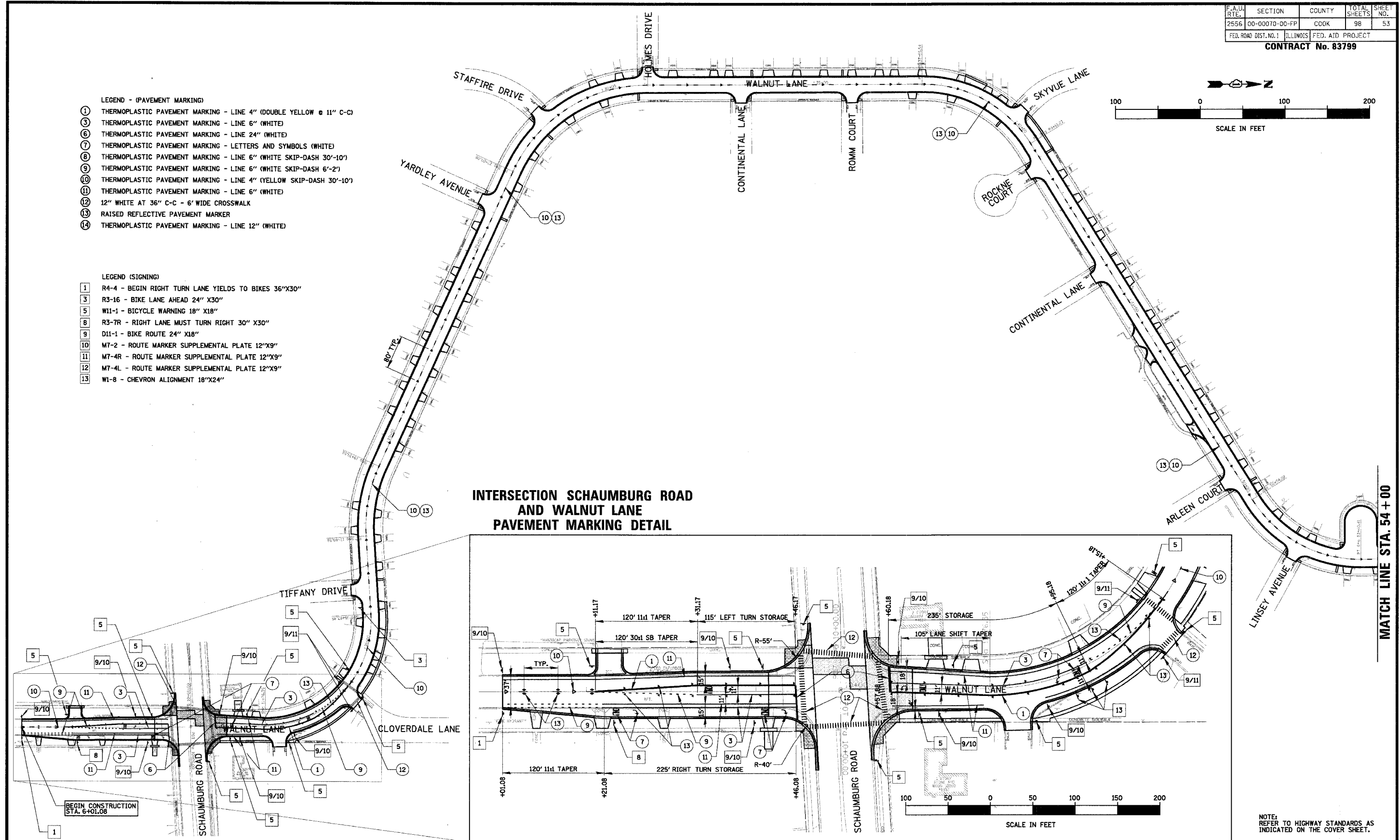


F.A.U. RTE.	SECTION	COUNTY	TOTAL SHEETS	SHEET NO.
2556	00-00070-00-PP	COOK	98	53
FED. ROAD DIST. NO. 1 ILLINOIS FED. AID PROJECT				
<b>CONTRACT No. 83799</b>				



- LEGEND - (PAVEMENT MARKING)**
- ① THERMOPLASTIC PAVEMENT MARKING - LINE 4" (DOUBLE YELLOW @ 11" C-C)
  - ③ THERMOPLASTIC PAVEMENT MARKING - LINE 6" (WHITE)
  - ⑥ THERMOPLASTIC PAVEMENT MARKING - LINE 24" (WHITE)
  - ⑦ THERMOPLASTIC PAVEMENT MARKING - LETTERS AND SYMBOLS (WHITE)
  - ⑧ THERMOPLASTIC PAVEMENT MARKING - LINE 6" (WHITE SKIP-DASH 30'-10')
  - ⑨ THERMOPLASTIC PAVEMENT MARKING - LINE 6" (WHITE SKIP-DASH 6'-2')
  - ⑩ THERMOPLASTIC PAVEMENT MARKING - LINE 4" (YELLOW SKIP-DASH 30'-10')
  - ⑪ THERMOPLASTIC PAVEMENT MARKING - LINE 6" (WHITE)
  - ⑫ 12" WHITE AT 36" C-C - 6' WIDE CROSSWALK
  - ⑬ RAISED REFLECTIVE PAVEMENT MARKER
  - ⑭ THERMOPLASTIC PAVEMENT MARKING - LINE 12" (WHITE)

- LEGEND (SIGNING)**
- 1 R4-4 - BEGIN RIGHT TURN LANE YIELDS TO BIKES 36"X30"
  - 3 R3-16 - BIKE LANE AHEAD 24" X30"
  - 5 W11-1 - BICYCLE WARNING 18" X18"
  - 8 R3-7R - RIGHT LANE MUST TURN RIGHT 30" X30"
  - 9 D11-1 - BIKE ROUTE 24" X18"
  - 10 M7-2 - ROUTE MARKER SUPPLEMENTAL PLATE 12"X9"
  - 11 M7-4R - ROUTE MARKER SUPPLEMENTAL PLATE 12"X9"
  - 12 M7-4L - ROUTE MARKER SUPPLEMENTAL PLATE 12"X9"
  - 13 W1-8 - CHEVRON ALIGNMENT 18"X24"



**INTERSECTION SCHAUMBURG ROAD AND WALNUT LANE PAVEMENT MARKING DETAIL**

MATCH LINE STA. 54 + 00

BEGIN CONSTRUCTION STA. 6+01.08

**CB** **CHRISTOPHER B. BURKE ENGINEERING LTD.**  
 9575 West Higgins Road, Suite 600  
 Rosemont, Illinois 60018  
 (847) 823-0500

CLIENT: **VILLAGE OF SCHAUMBURG**  
 Engineering Department  
 101 Schaumburg Court  
 Schaumburg, IL. 60193-7806

NO.	DATE	NATURE OF REVISION	CHKD.
FILE NAME		N:\SCHAUMBURG\01-434\DESIGN\PROJ01434_PMK_1.PMK	
DSGN.	GS		
DWN.	GS		
CHKD.	JGS		
SCALE:	1"=100'		
DATE:	04/05/2005		

TITLE: **PAVEMENT MARKING PLAN AND SIGNING PLAN C-91-108-04**

PROJECT NO.	01-434
SHEET 53 OF 98	
DRAWING NO.	<b>53</b>

NOTE: REFER TO HIGHWAY STANDARDS AS INDICATED ON THE COVER SHEET.