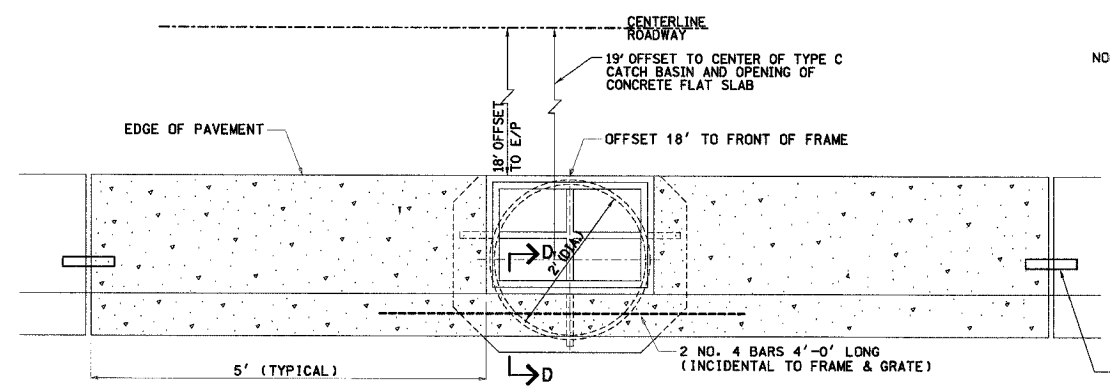
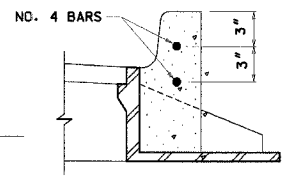


F.A.U. R.T.E.	SECTION	COUNTY	TOTAL SHEETS	SHEET NO.
2556	00-00070-00-FP	COOK	98	55
FED. ROAD DIST. NO. 1		ILLINOIS		FED. AID PROJECT

CONTRACT No. 83799

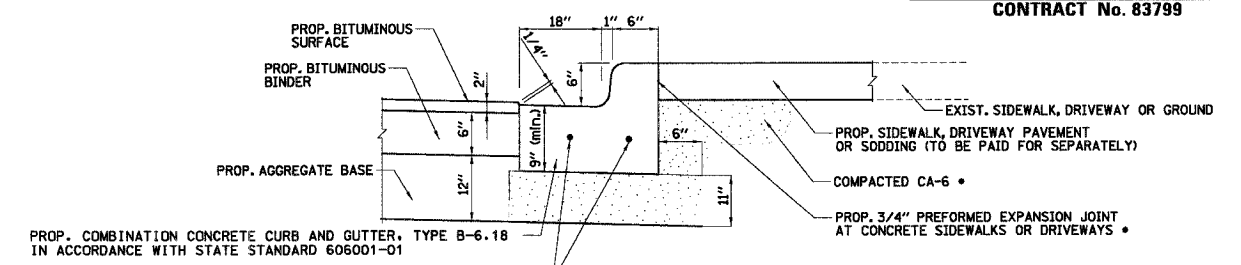


DETAIL OF CURB AND GUTTER AT STRUCTURE WITH TYPE 23 FRAME AND GRATE
NOT TO SCALE



SECTION D-D
NOT TO SCALE

ALL EXPANSION JOINTS (TYPICAL) NO. 8 EPOXY COATED SMOOTH DOWEL BAR (18" LONG) WITH STOP CAP 1" THICK PREFORMED EXPANSION JOINT FILLER JOINTS



PROP. COMBINATION CONCRETE CURB AND GUTTER, TYPE B-6.18 IN ACCORDANCE WITH STATE STANDARD 606001-01

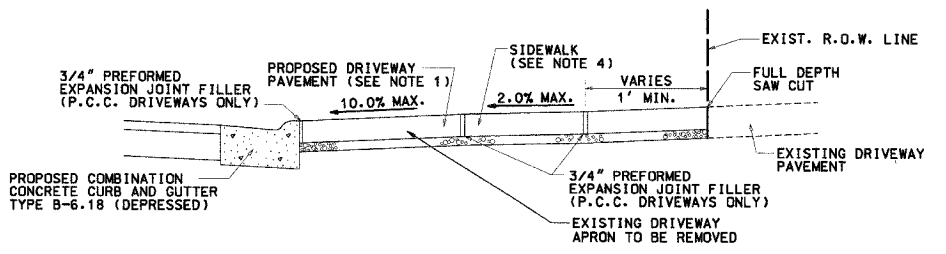
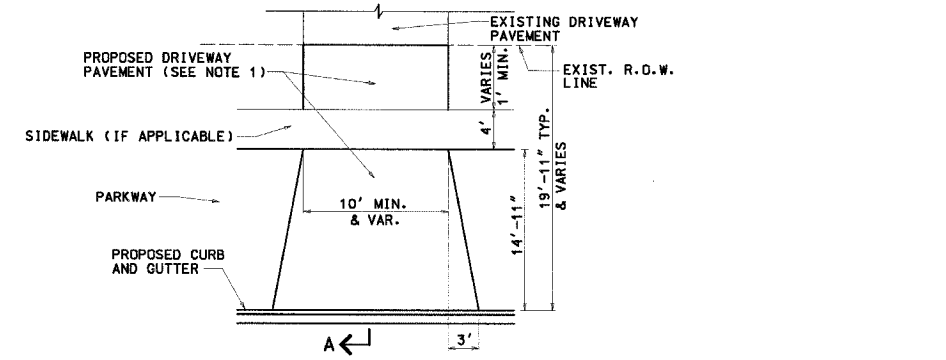
NOTE: 2-#6 EPOXY COATED SMOOTH DOWEL BARS (18" LONG) DRILLED AND GROUTED AT LOCATIONS WHERE NEW CURB AND GUTTER MEETS EXISTING *
NOTE: LONGITUDINAL BARS, IF ENCOUNTERED IN THE EXISTING CURB OR CURB AND GUTTER, ARE NOT TO BE REPLACED. CUTTING AND REMOVING LONGITUDINAL BARS SHALL BE INCLUDED IN THE COST OF CURB OR CURB AND GUTTER REMOVAL AND REPLACEMENT.

* INCLUDED IN THE COST FOR COMBINATION CONCRETE CURB AND GUTTER REMOVAL AND REPLACEMENT, TYPE B-6.18

COMBINATION CONCRETE CURB & GUTTER, TYPE B-6.18

NOT TO SCALE

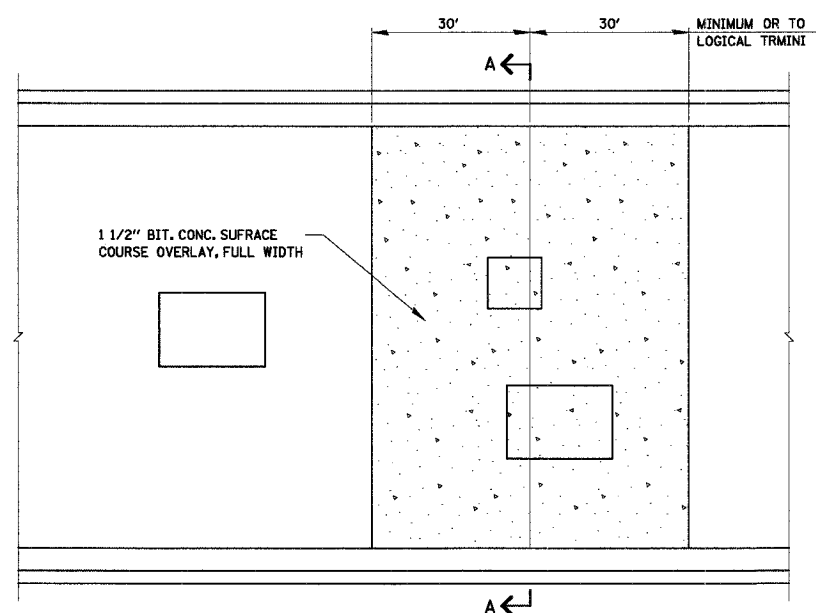
INDUSTRIAL DRIVEWAY DETAIL
NOT TO SCALE



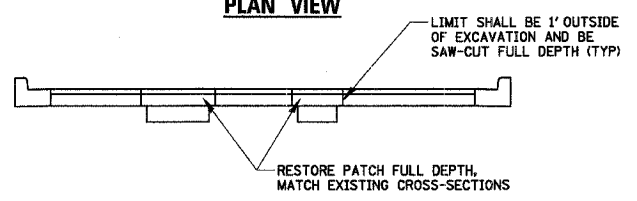
TYPICAL DRIVEWAY PAVEMENT

NOTES:

- THE PROPOSED DRIVEWAY PAVEMENT SHALL CONSIST OF:
 - 7" PORTLAND CEMENT CONCRETE DRIVEWAY PAVEMENT AND 2" OF AGGREGATE BASE COURSE TYPE B IF THE EXISTING DRIVEWAY IS P.C.C. OR
 - 3" BITUMINOUS CONCRETE SURFACE COURSE, SUPERPAVE, MIX C, N50 (2 LIFTS) 6" AGGREGATE BASE COURSE TYPE B IF THE EXISTING DRIVEWAY IS BITUMINOUS OR AGGREGATE.
- PREFORMED EXPANSION JOINT FILLER SHALL BE CONSIDERED INCIDENTAL TO P.C.C. DRIVEWAY PAVEMENT.
- ALL REQUIRED EARTH EXCAVATION AND DRIVEWAY REMOVAL REQUIRED TO CONSTRUCT DRIVES SHALL BE INCIDENTAL TO DRIVEWAY REMOVAL & REPLACEMENT.
- SIDEWALK THROUGH DRIVEWAY SHALL BE 7" THICK AND SHALL BE PAID FOR AS PORTLAND CEMENT CONCRETE SIDEWALK, 5 INCH, SPECIAL.
- DRIVEWAY SIZES IN INDUSTRIAL AREA SHALL MATCH EXISTING.



PLAN VIEW



SECTION A-A
PAVEMENT CUT DETAIL

NOTE: FOR CONCRETE BASE SECTIONS, #5 BARS SHALL BE DRILLED AND GROUTED INTO SURROUNDING CONCRETE PAVEMENT PRIOR TO PLACEMENT OF CONCRETE AT APPROX. 12" O.C. OR A MIN. OF 2 PER SIDE EVENLY SPACED.

LEGEND

	EXISTING	PROPOSED
POWER POLE	⊕	⊕
ROW MARKER	⊗	⊗
FIRE HYDRANT	⊕	⊕
LIGHT STANDARD	⊗	⊗
INLET	⊕	⊕
CATCHBASIN	⊕	⊕
TREE	⊕	⊕
MAILBOX	⊕	⊕
EVERGREEN TREE	⊕	⊕
MANHOLE	⊕	⊕
TRAFFIC SIGNAL	⊕	⊕
FLARED END SECTION	⊕	⊕
TELEPHONE POLE	⊕	⊕
SIGN	⊕	⊕
IRON PIPE SET	⊕	⊕
IRON PIPE FOUND	⊕	⊕
BUFFALO BOX	⊕	⊕
SANITARY CLEANOUT	⊕	⊕
TELEPHONE SPLICE BOX	⊕	⊕
HAND HOLE (TS)	⊕	⊕
ITEM TO BE ABANDONED		AB
ITEM TO BE MOVED		M
ITEM TO BE RELOCATED		REL
STRUCTURE TO BE ADJUSTED		ADJ
STRUCTURE TO BE REMOVED		R

CB BURKE ENGINEERING LTD.
9575 West Higgins Road, Suite 600
Rosemont, Illinois 60018
(847) 823-0500

CLIENT: **VILLAGE OF SCHAUMBURG**
Engineering Department
101 Schaumburg Court
Schaumburg, IL. 60193-7806

NO.	DATE	NATURE OF REVISION	CHKD.
FILE NAME		N:\SCHAUMBURG\01-434\DESIGN\WAL_DET_1.DET	
DSGN.	GS		
DWN.	GS		
CHKD.	JGS		
SCALE:	NOT TO SCALE		
DATE:	04/05/2005		

TITLE: **WALNUT LANE RECONSTRUCTION**
DETAILS
C-91-108-04

PROJECT NO.	01-434
SHEET 55 OF 98	
DRAWING NO.	55